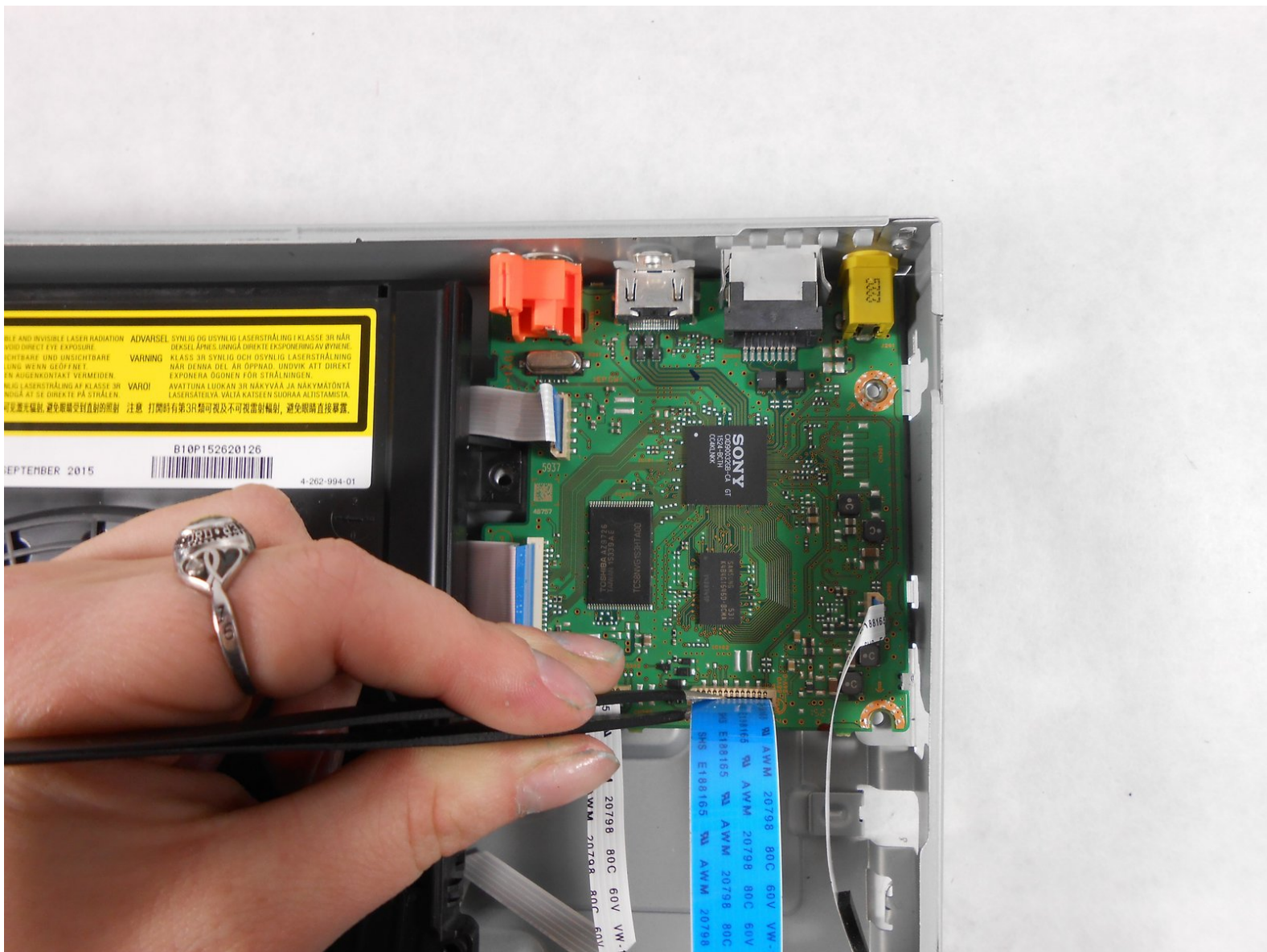




Sony BDP BX350 Motherboard Replacement

Sony BDP BX350 Device Motherboard. This guide is needed if the HDMI port or power input port are faulty.

Written By: Kristen Vezina



INTRODUCTION

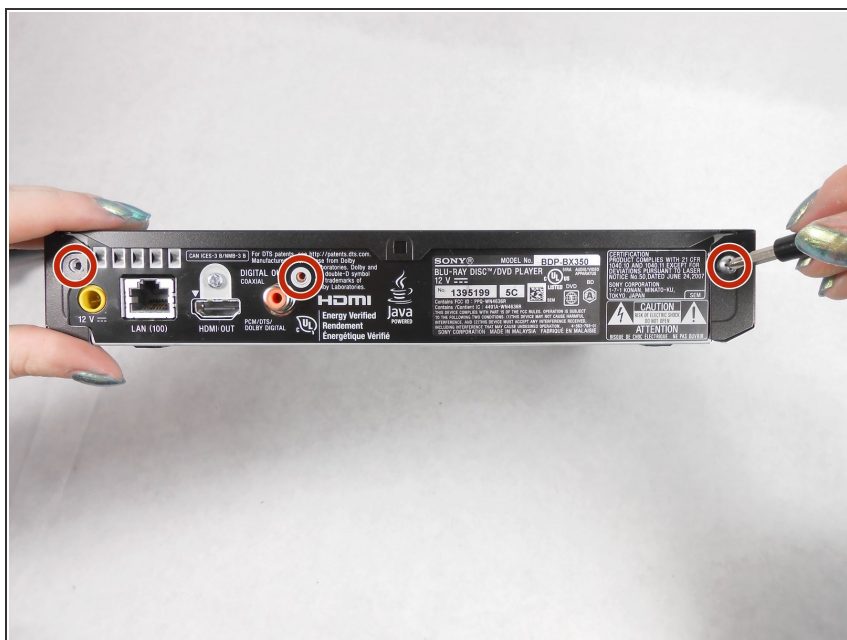
This is a step-by-step guide on how to replace your Sony BDP BX350 Device Motherboard. This guide is needed if the HDMI port or power input port are faulty. Make sure the disc assembly is taken out before starting this guide.



TOOLS:

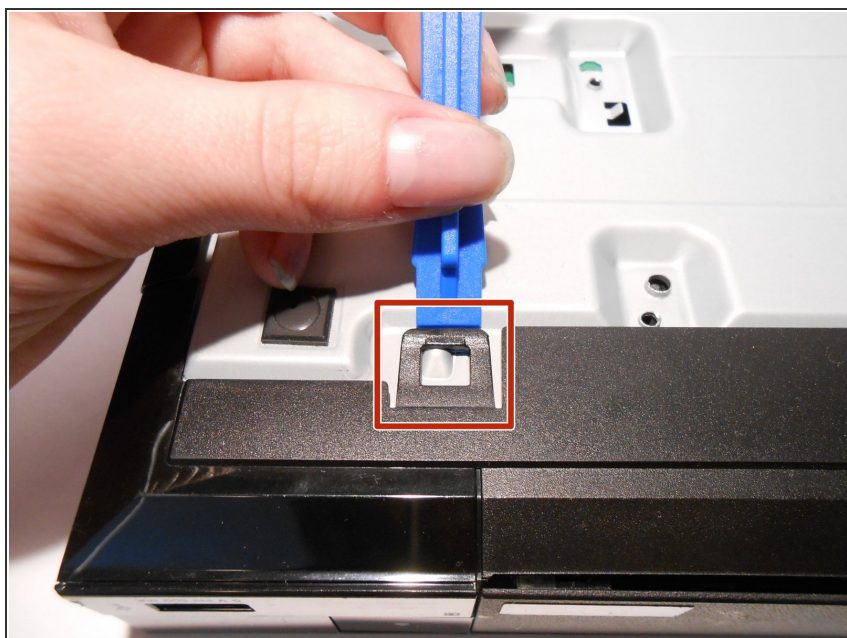
- [iFixit Opening Tools](#) (1)
 - [J1 Screwdriver Bit](#) (1)
-

Step 1 — Disc Assembly



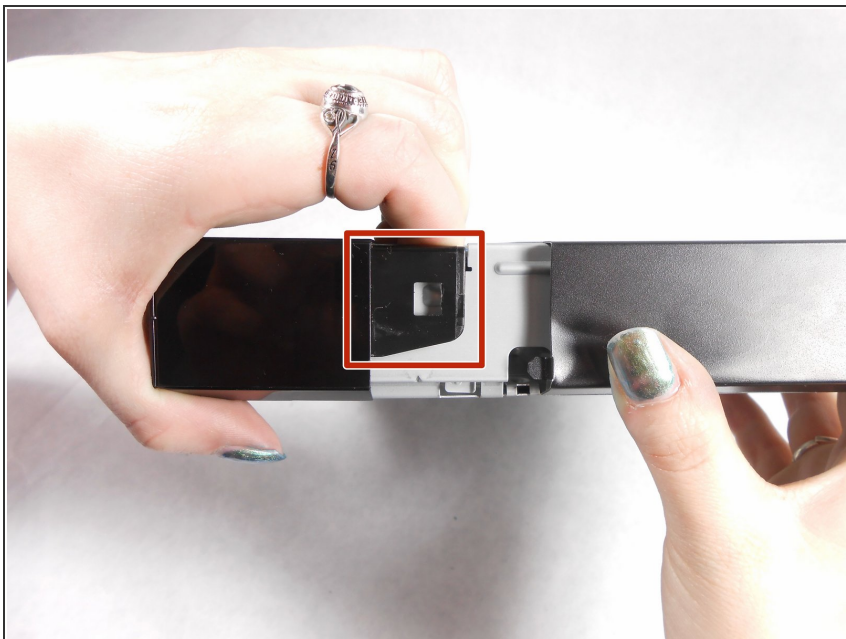
- Remove the three 10mm Philips head screws on the back of the player.

Step 2



- Using an opening tool lift up the tabs located on the bottom of the plastic front cover.

Step 3



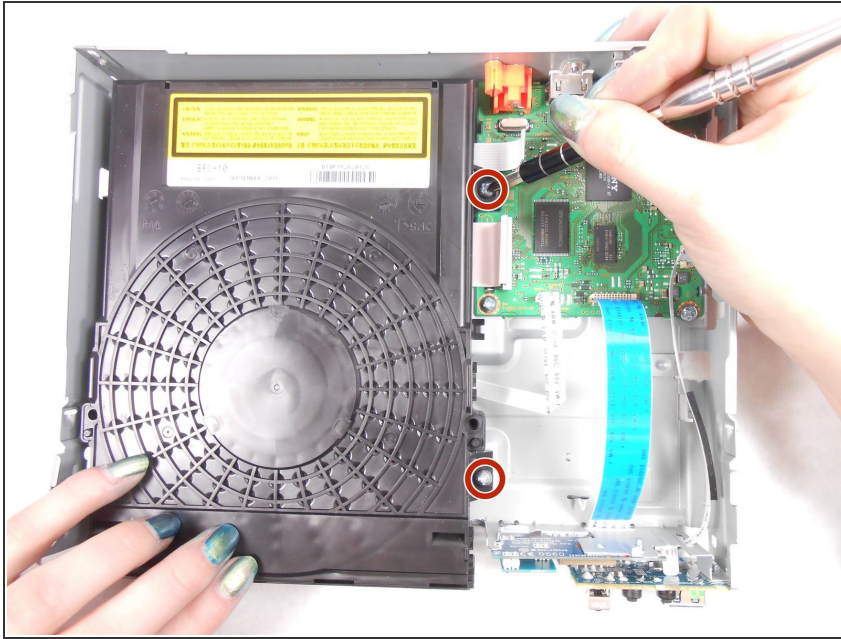
- Lift the tabs located on each side of the device to free the front cover. Begin to separate the front and metal back covers.

Step 4



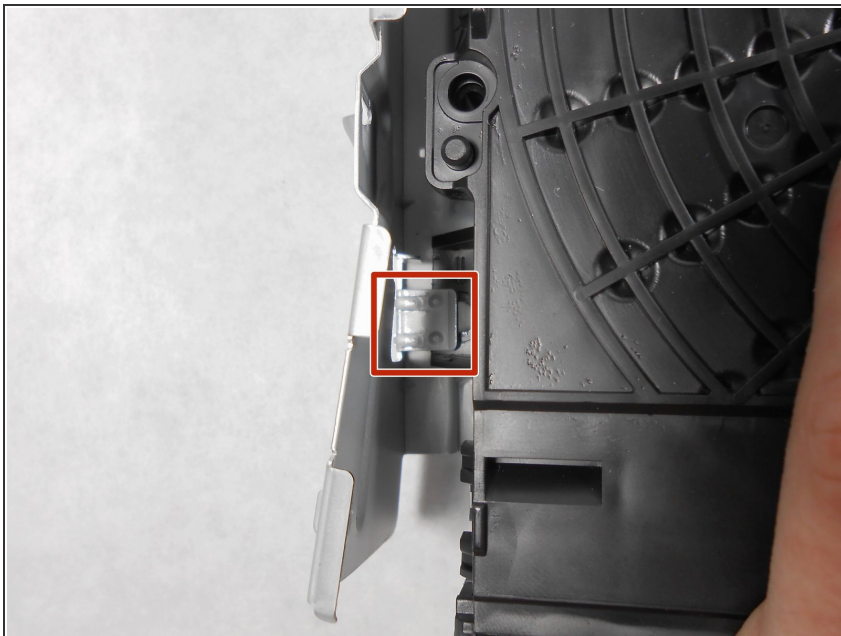
- Completely separate the front cover and the metal back cover from the grey casing.
- The inner components should all be completely exposed after opening.

Step 5



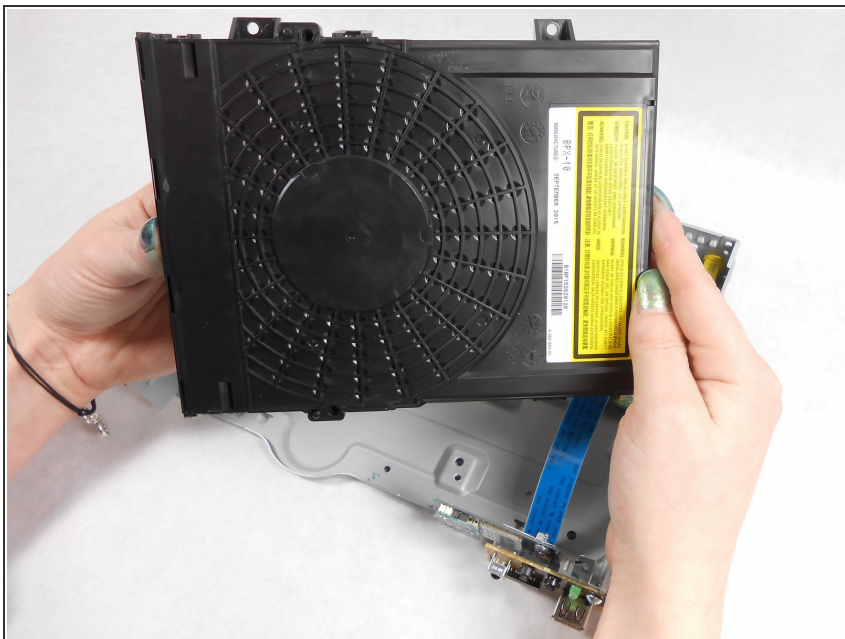
- Unscrew the two 8mm Philips head screws securing the disc assembly to the main casing.

Step 6



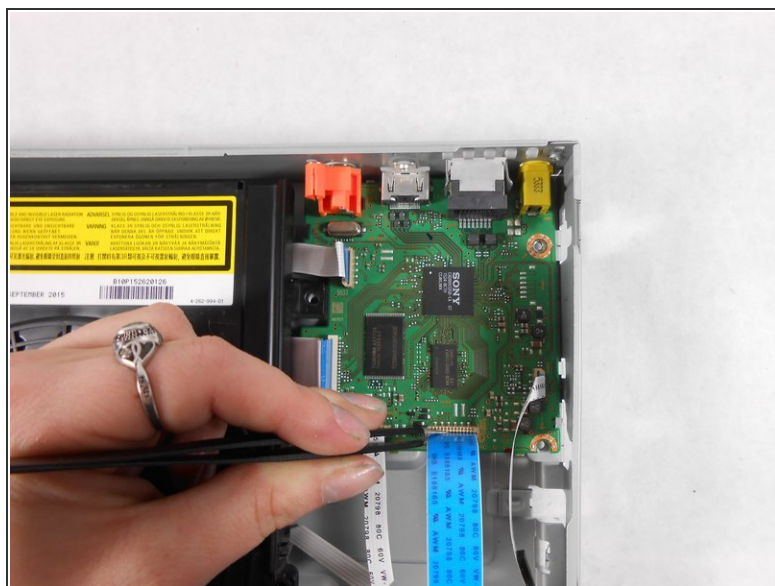
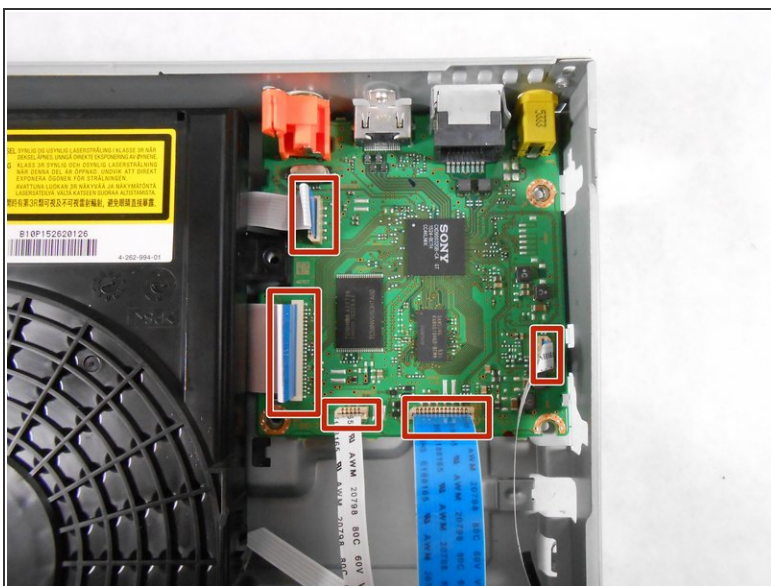
- Pull the disc assembly out from under the metal tabs on the main casing.

Step 7



- Remove disc assembly.

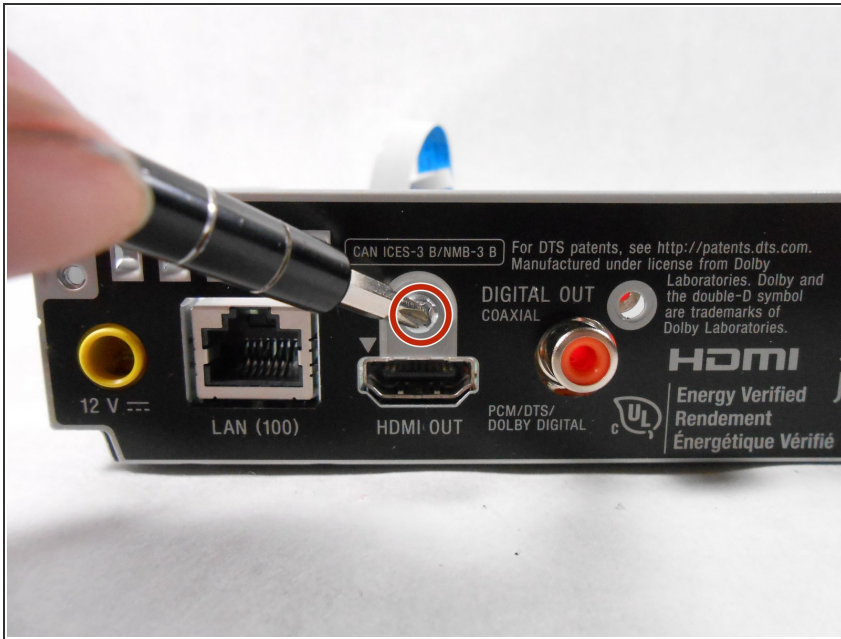
Step 8 — Motherboard



⚠ Do not bend or tear the ribbon cable.

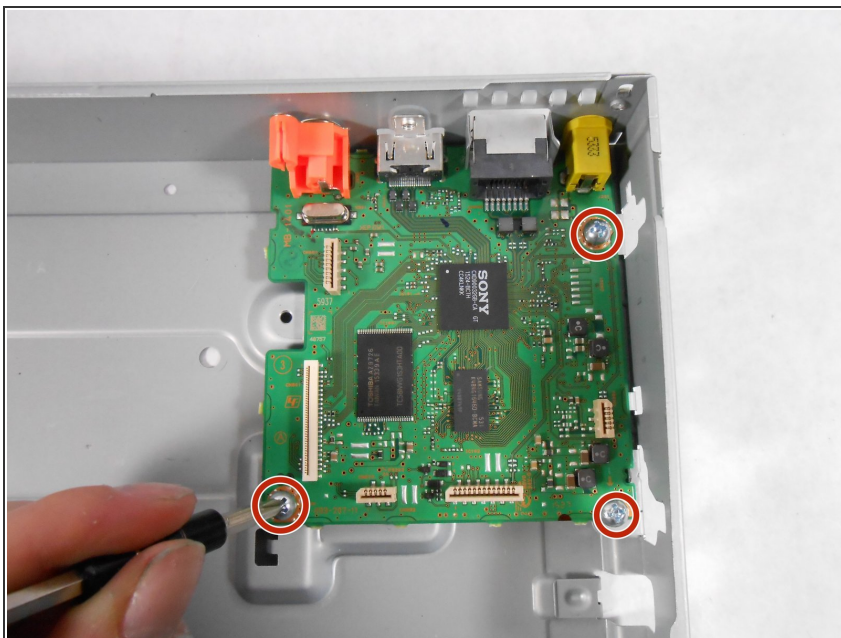
- Remove all five ribbon cables from the motherboard.

Step 9



- Unscrew 3mm Philips head HDMI screw from metal casing.

Step 10



- Unscrew the three 5mm Philips head screws from motherboard.
- Separate the motherboard from the metal casing by pulling directly up. Use an opening tool if necessary.

To reassemble your device, follow these instructions in reverse order.