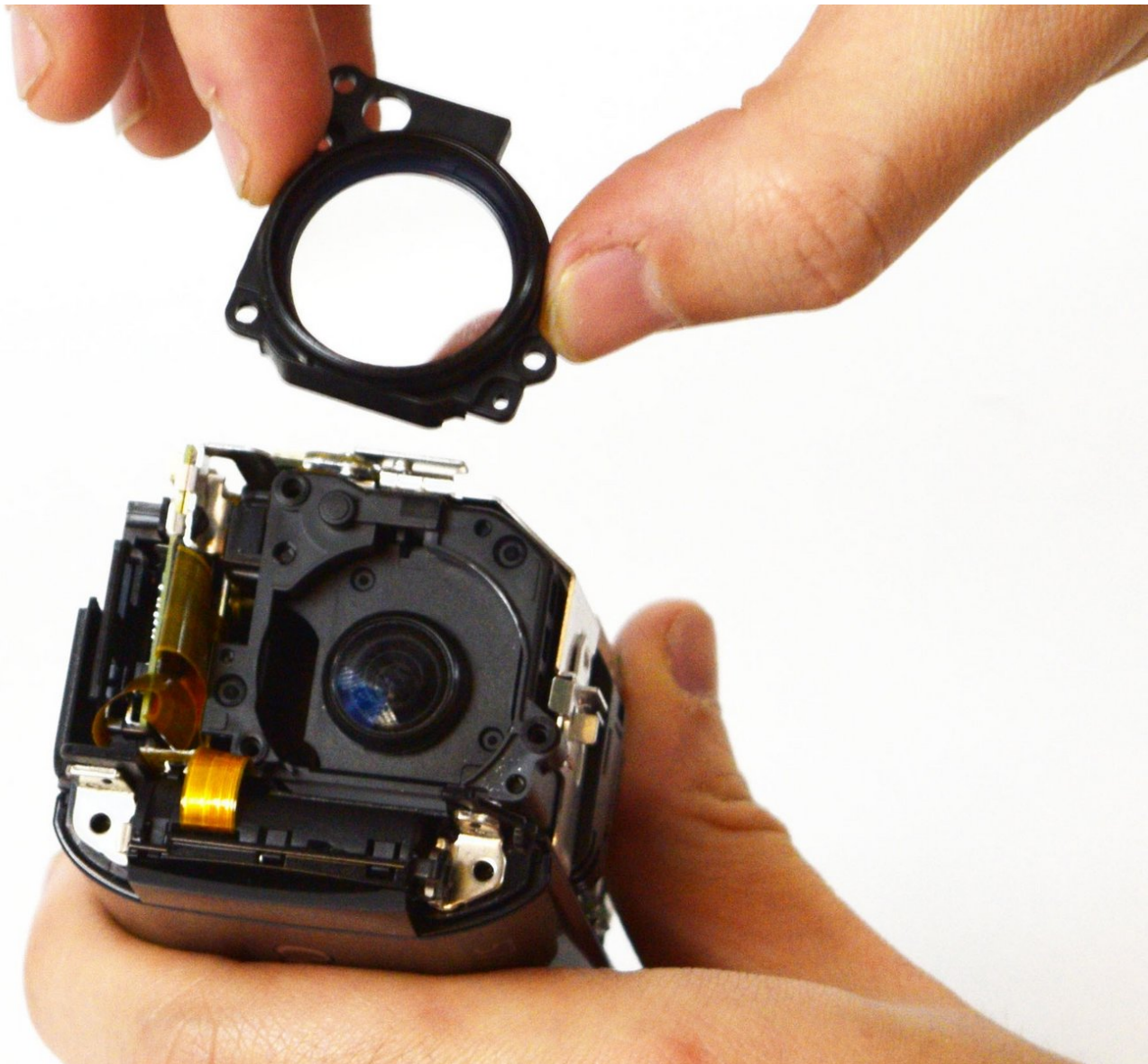




Canon Vixia HF R70 Lens Replacement

A detailed guide to removing and replacing the lens for your Canon Vixia HF R70.

Written By: Kristin Pitts



INTRODUCTION

Use this guide to remove and replace the lens to your Canon Vixia HF R70.



TOOLS:

- [iFixit Opening Tools](#) (1)
 - [Phillips #00 Screwdriver](#) (1)
-

Step 1 — Battery



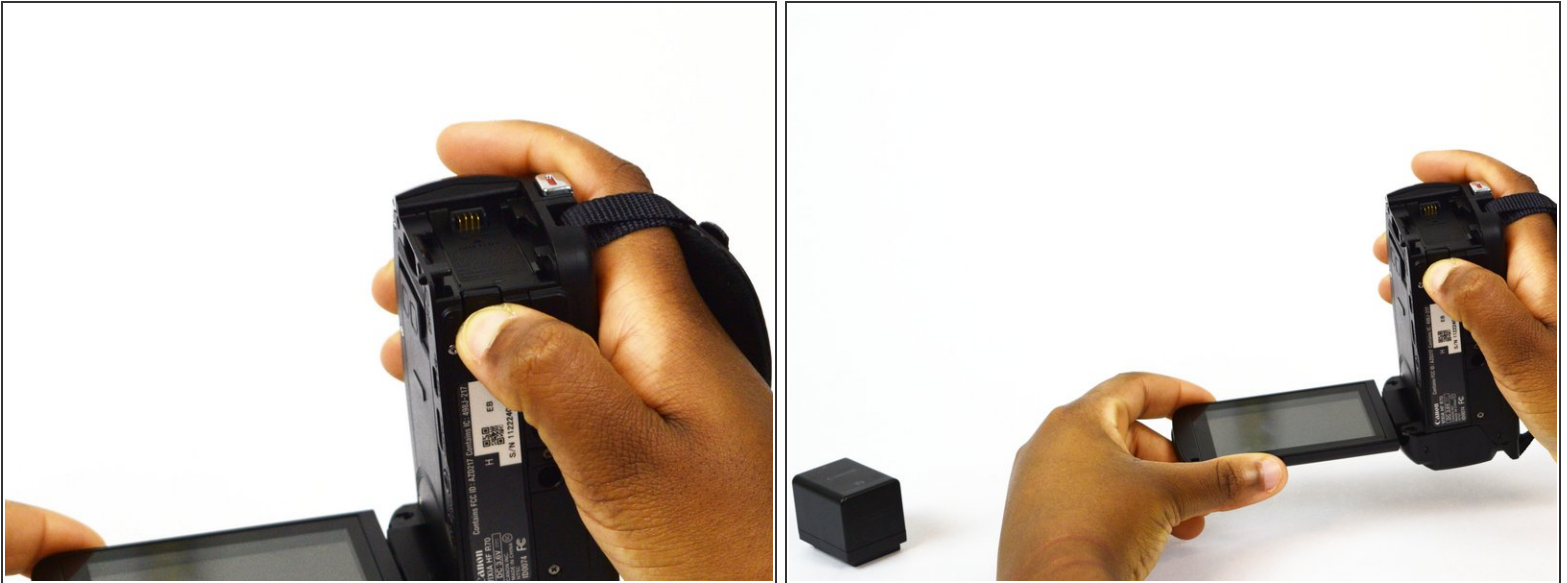
- Power off and unplug the device.
- Position the camera so that the battery is facing you.

Step 2



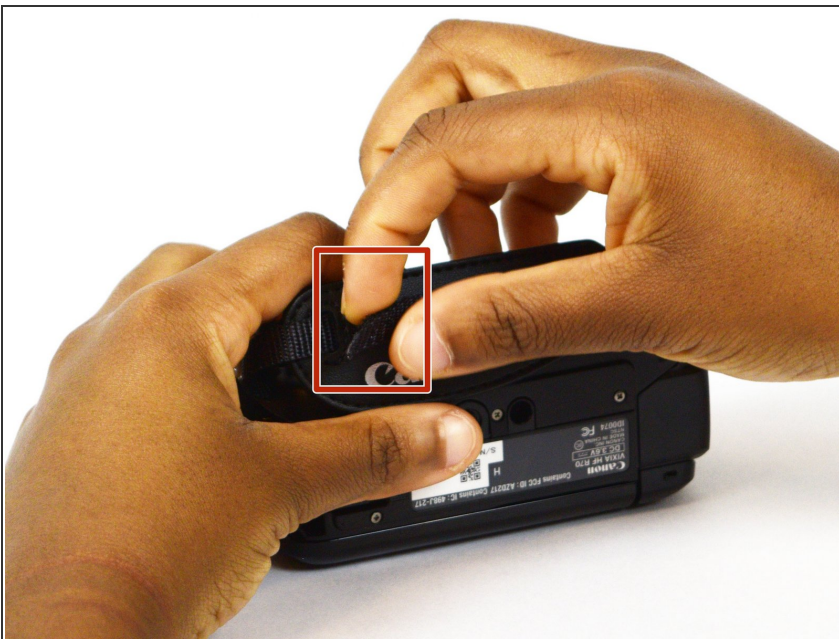
- Locate the latch on the bottom edge of the camera.
- Hold the battery into place and gently push down on the latch towards the lens.

Step 3



- While holding down the latch, remove the battery by pulling it out of the device.

Step 4 — Wrist Strap



- Position the camcorder so that the wrist strap is facing you.
- Locate the loose end of the strap.

Step 5



- Gently pull on the loose end to separate the Velcro.

Step 6



- Locate the "slot" on bottom right corner of the camcorder where the strap loops through.
- Pull the strap through the loop.

Step 7



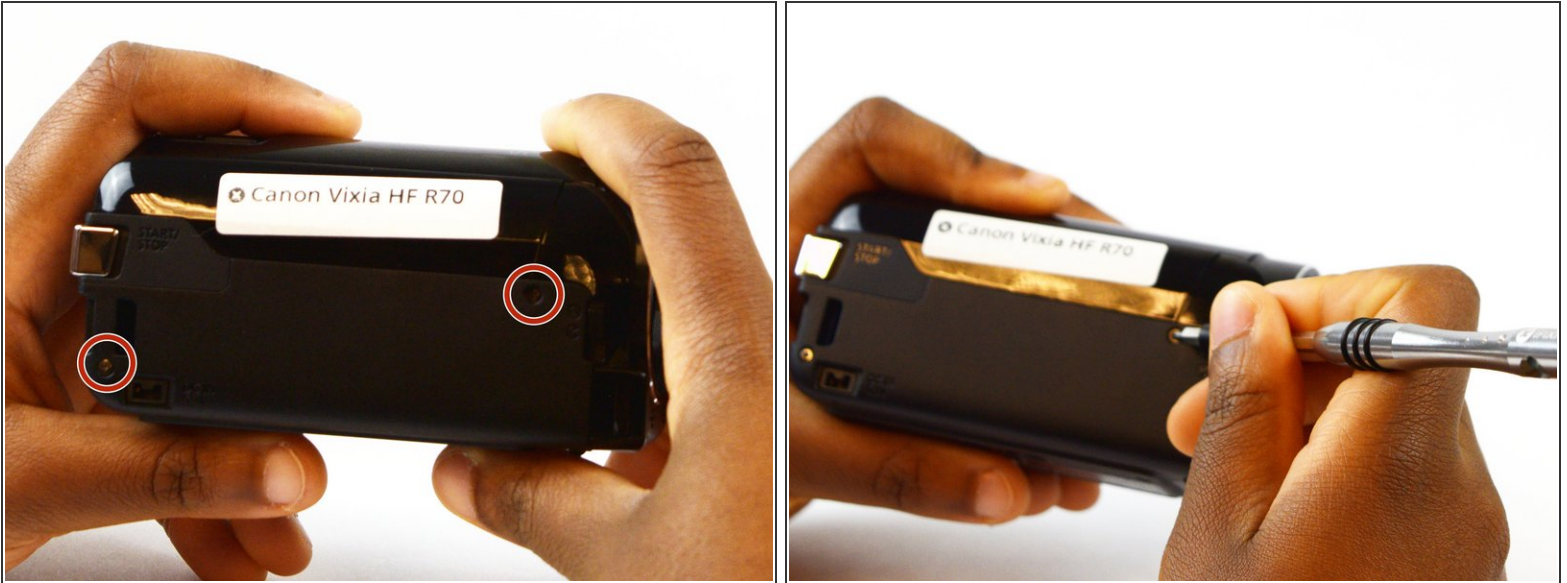
- Pull the strap through the leather cushion.

Step 8



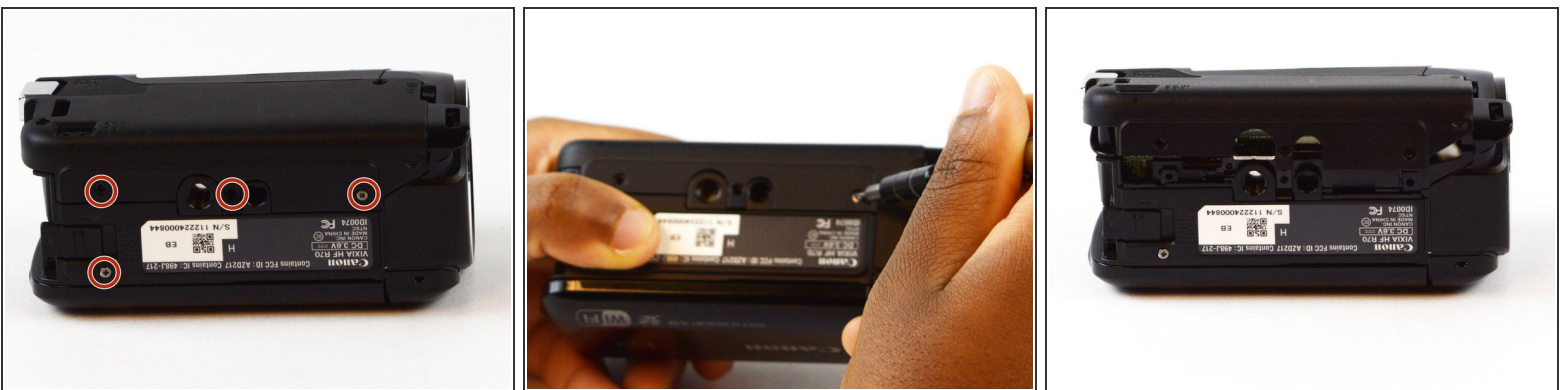
- Pull the strap through the slot on the left side of the camcorder.

Step 9 — Side Panel



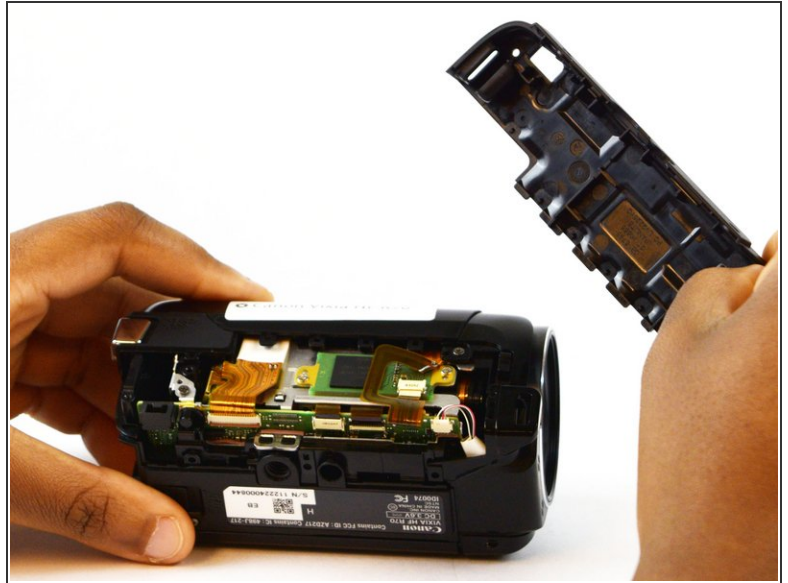
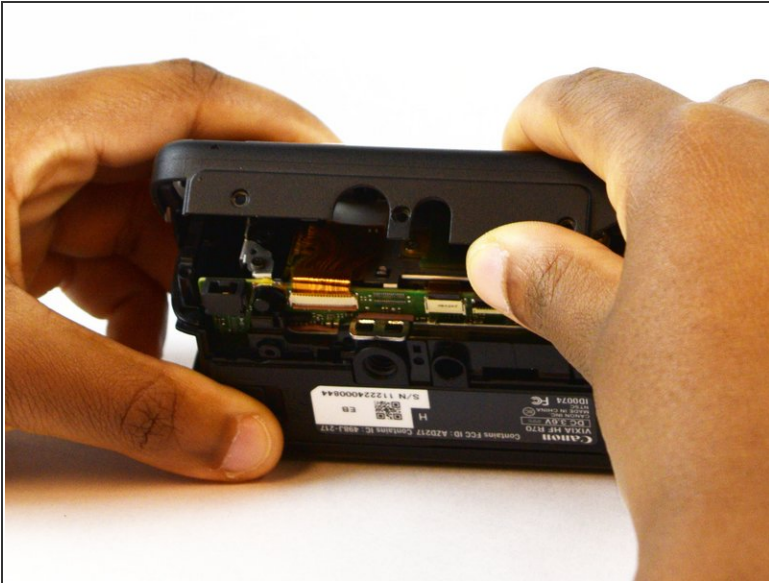
- Position the camcorder so that the side panel is facing you.
- Locate the two 6mm Phillips #00 screws on the side panel.
- Remove the the screws using a screwdriver with a Phillips #00 head.

Step 10



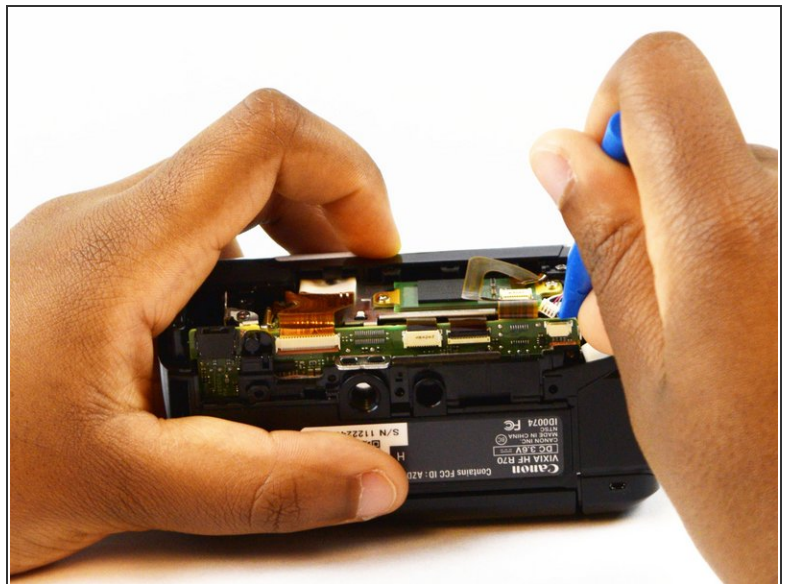
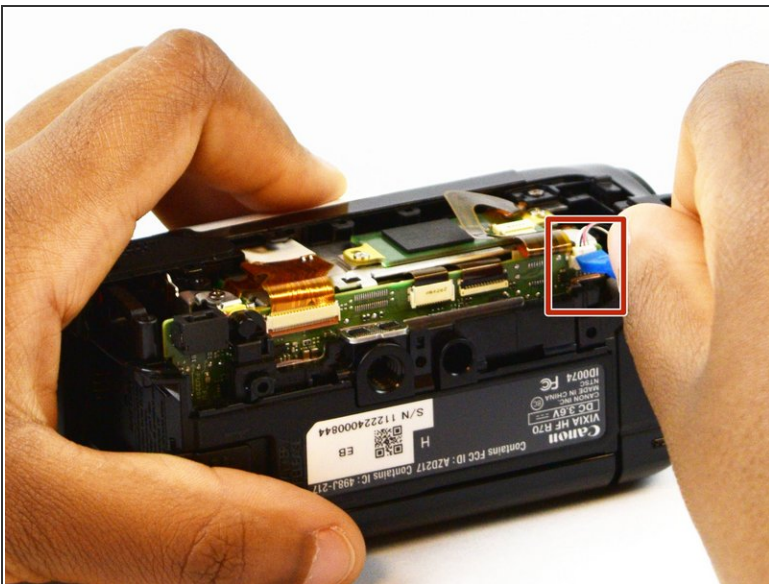
- Turn the camcorder so that the bottom is facing you.
- Using your screwdriver, locate and remove the four 6mm Phillips #00 screws connecting the side panel to the bottom of the camcorder.

Step 11



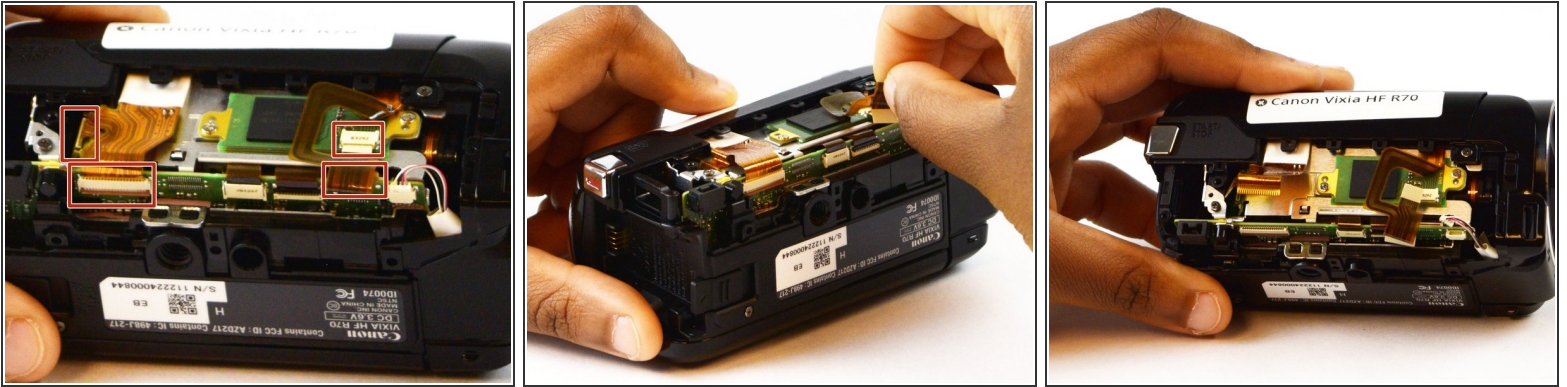
- Gently remove the side panel by pushing it up from the bottom.

Step 12 — Top Panel



- Disconnect the wires by inserting the plastic opening tool into the small slit.
- Begin to push upward with the plastic opening tool, disconnecting the two compartments.

Step 13



- Disconnect the four ZIF connectors by grasping the connector firmly and pulling gently.

Step 14



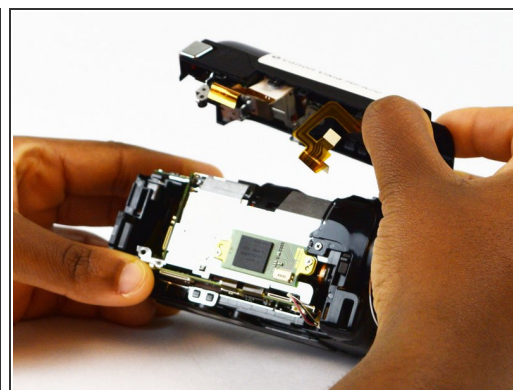
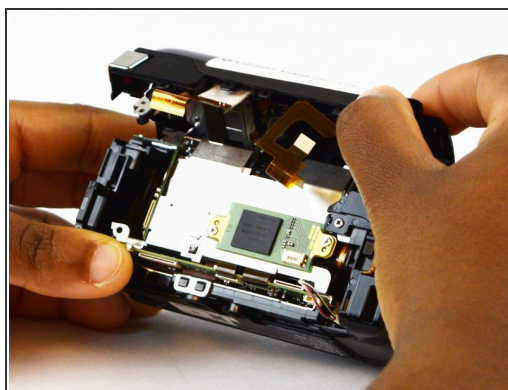
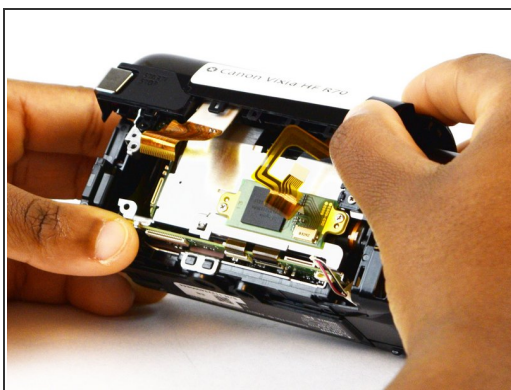
- Locate and remove the two 3mm Phillips #00 screws on the side of the camera where the side panel was removed.

Step 15



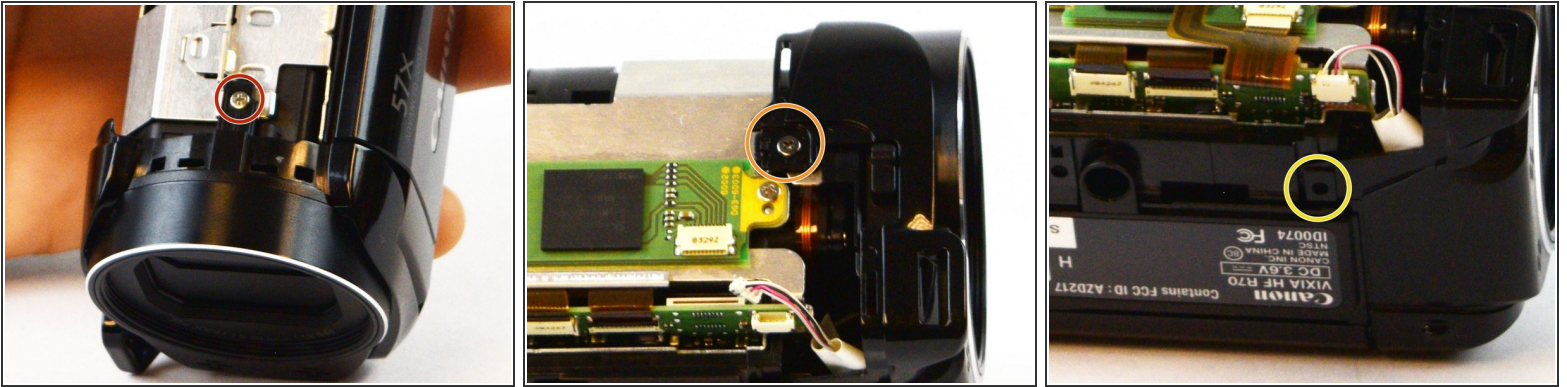
- Turn the camera over to the side with the LCD screen, and open the screen.
- Locate and remove the three 5mm Phillips #00 screws holding the top panel in place.

Step 16



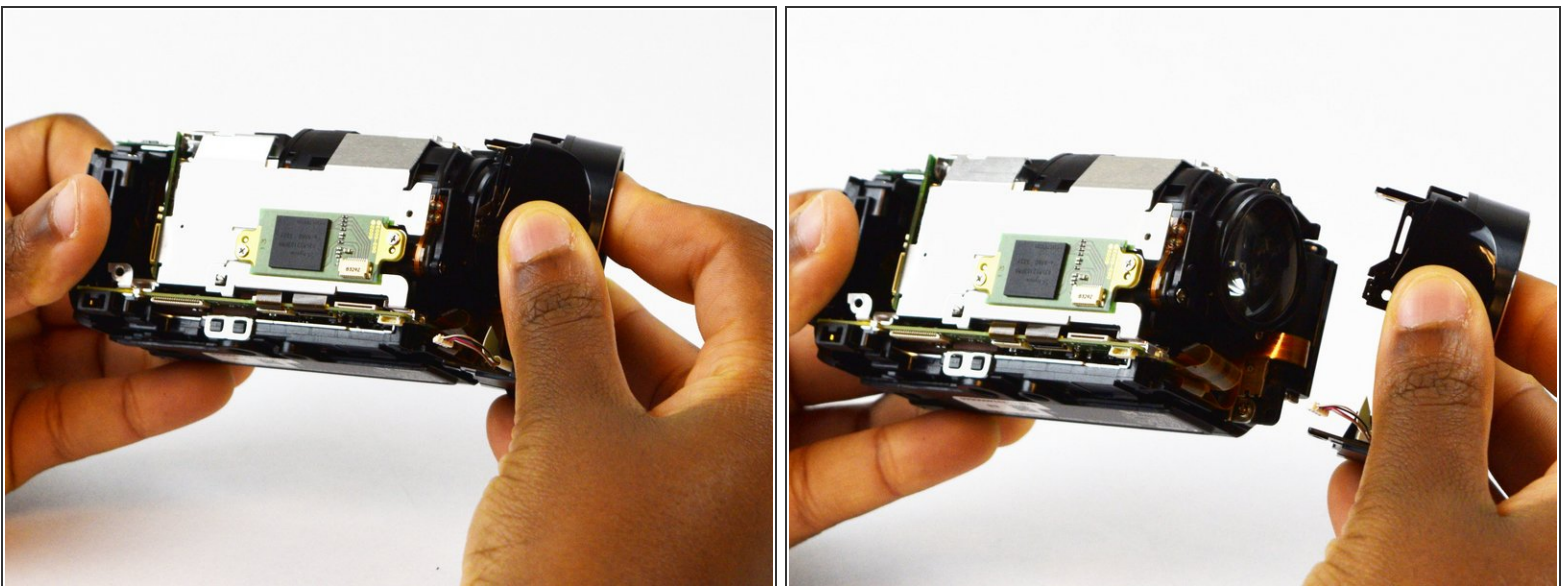
- Pull the panel up and away until it is removed completely.

Step 17 — Shutter



- There are three 5mm Phillips #00 screws that need to be removed - one on the top, one on the side, and one on the bottom.
- Locate and remove the screw on the top side of the camera.
- Locate and remove the screw on the side of the camera where you previously removed the side panel.
- Locate and remove the screw on the bottom of the camera.

Step 18



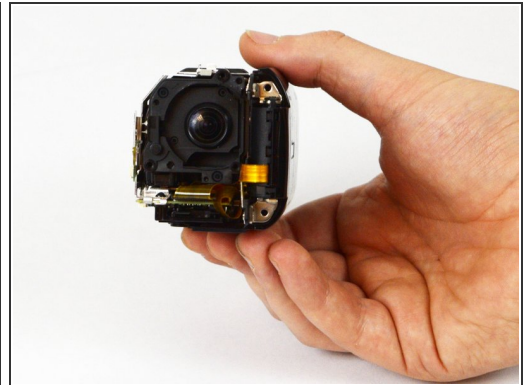
- Pull the entire shutter away from the body of the camera to remove it.

Step 19 — Lens



- With the front of the camera facing you, locate and remove the three 5mm Phillips #00 screws that hold the lens in place.

Step 20



- Grasp the plastic sides of the lens, and pull it away from the camera body to finish removing the lens.

To reassemble your device, follow these instructions in reverse order.