



# ACN Iris WG4K Key Pad Replacement

Replace your malfunctioning keypad.

Written By: Itze Kenney



---

## INTRODUCTION

The keypad is an extremely important component of the ACN Iris WG4K. It is important because it is the only way you can interact with your device. It receives all of its commands through the soft keys. If the keypad no longer works, lags, or is damaged, look at this guide for instructions on how to replace it.



### TOOLS:

- [Phillips #0 Screwdriver](#) (1)
-

## Step 1 — Handset



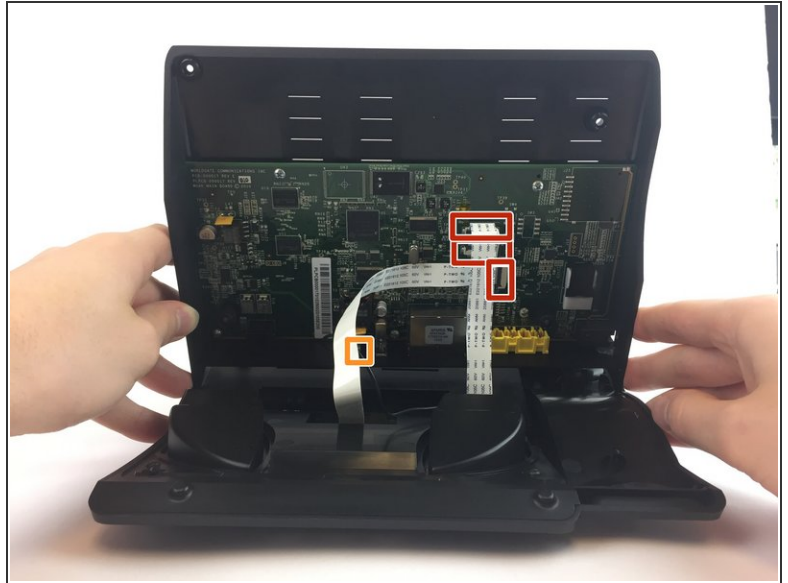
- Press upwards with your index finger on the 4P4C connector as shown in the image.
- Pull the connector gently out of its socket.

## Step 2 — Lower Case



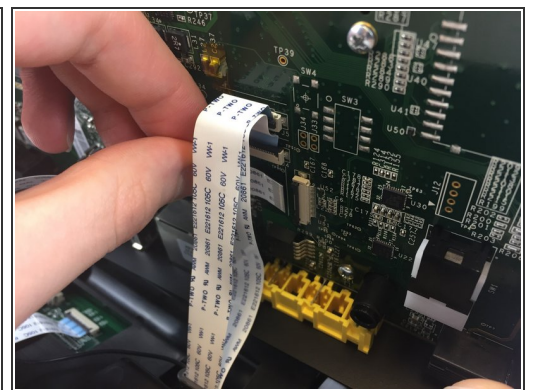
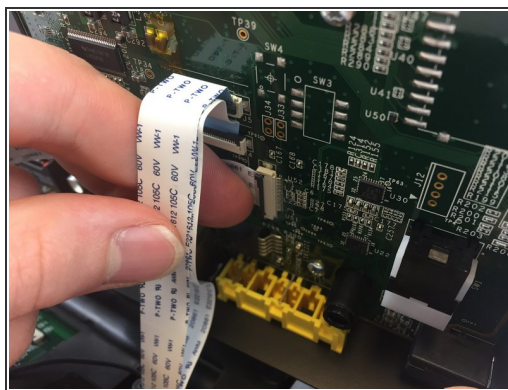
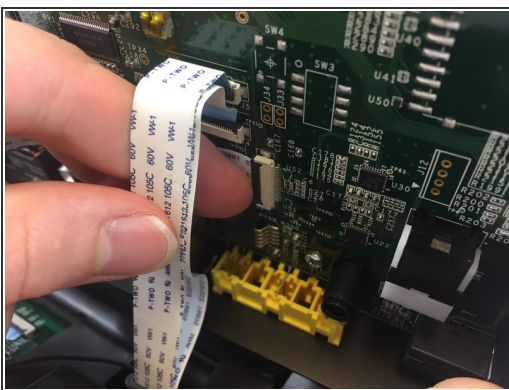
- Flip the main body of the video phone so that the bottom is facing up.
- Use the Phillips #0 Screwdriver to remove the four Phillips head screws (6 mm) highlighted by the red circles.

## Step 3



- Lift the back case upwards to expose the inside components.
- Red rectangles indicate the three ribbon cables.
- The orange square indicates the blade connector.

## Step 4



- Disconnect the three ribbon cables from their insulation-displacement connectors by flipping up the black plastic clip.
- Gently pull the ribbon cables out of their insulation-displacement connectors.



## Step 5



- Disconnect the blade connector from the blade receptacle by gripping the exposed area of the blade connector.
- Gently pull the blade connector out of the blade receptacle.

## Step 6



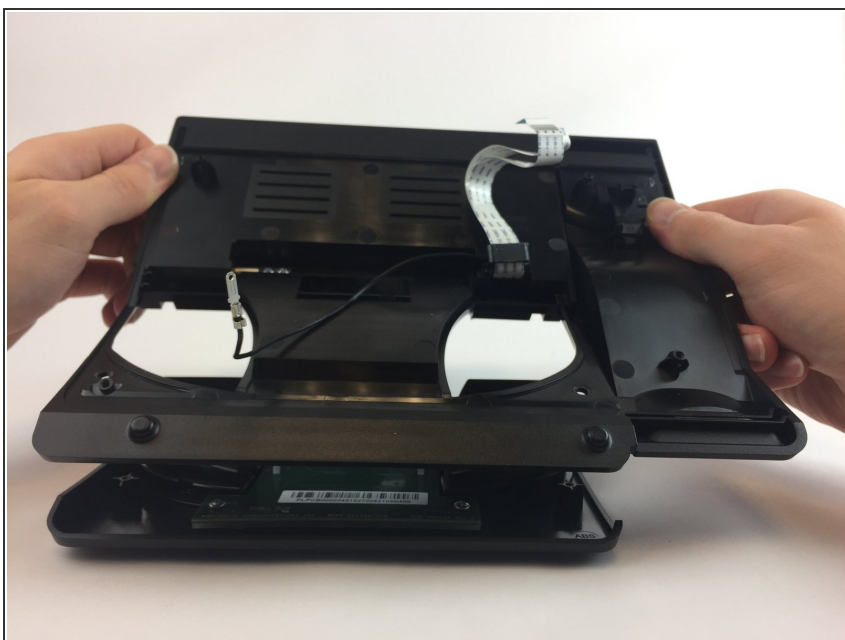
- Gently lift up the lower case to separate it from the top case.

## Step 7 — Key Pad



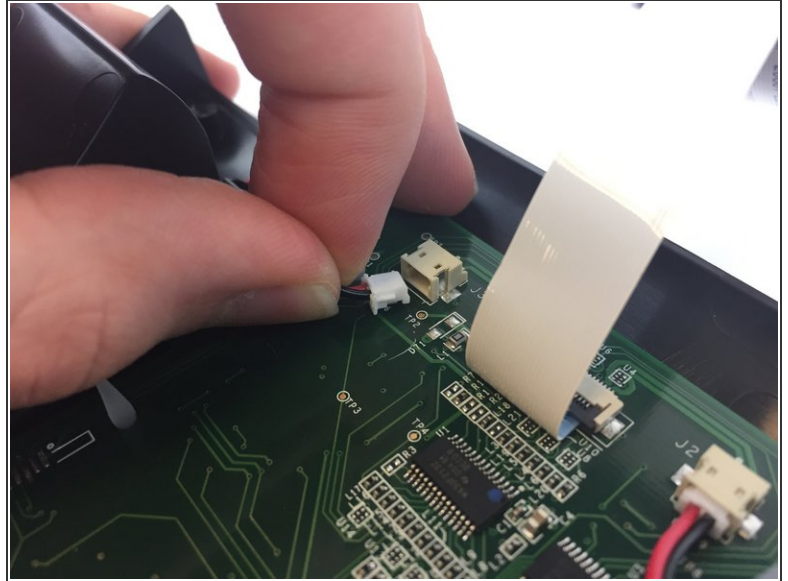
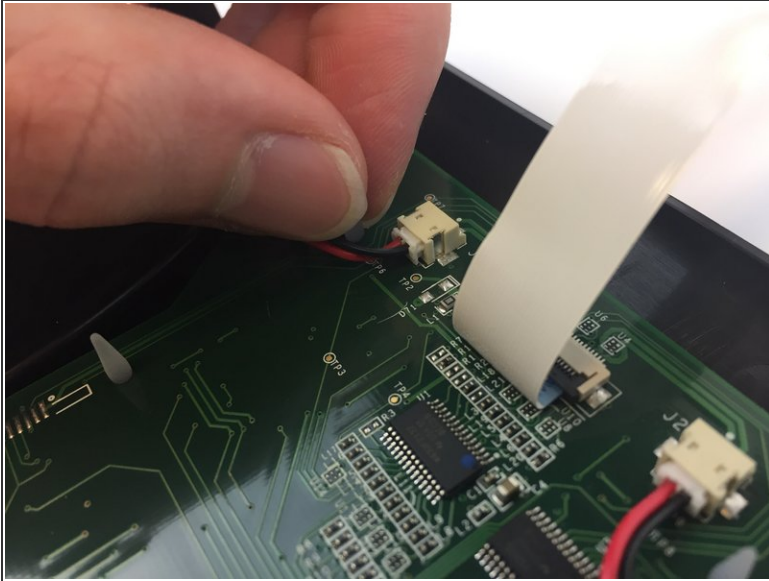
- Use the Phillips #0 Screwdriver to remove the four Phillips head screws 6 mm highlighted by the red circles.

## Step 8



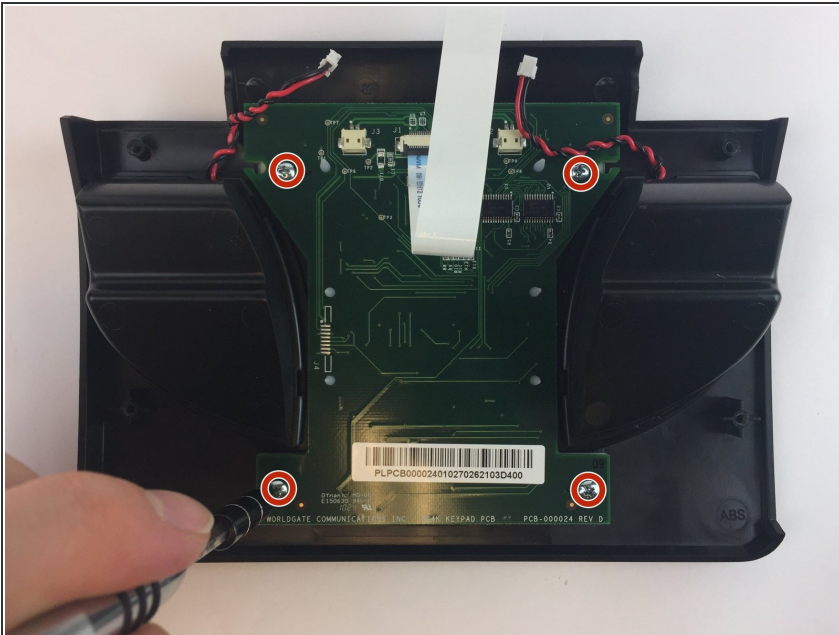
- Gently lift up on the top case to separate it from the keypad/speaker panel.

## Step 9



- Disconnect the two white 2-pin JST connectors from the keypad/speaker circuit board by tugging gently until they are released.

## Step 10



- Use the Philips screw driver to remove the four Phillips head screws 6 mm highlighted by the red circles.

To reassemble your device, follow these instructions in reverse order.