



# Toshiba Satellite C55-C5240 Screen Replacement

This guide shows you how to remove the screen.

Written By: Angela Rodriguez



---

## INTRODUCTION

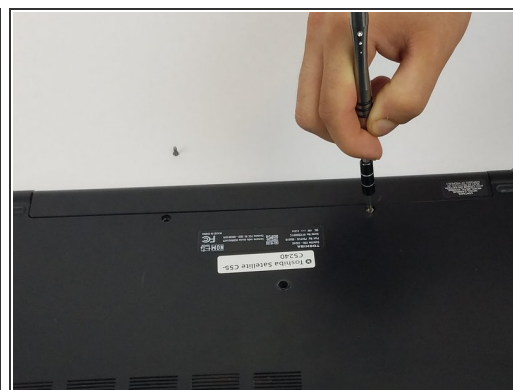
When the screen is cracked or just does not work, it will need to be replaced. This is the guide you need to help you do that.


---

### TOOLS:

- [iFixit Opening Tools](#) (1)
  - [Tweezers](#) (1)
  - [Phillips #1 Screwdriver](#) (1)
  - [Phillips #00 Screwdriver](#) (1)
-

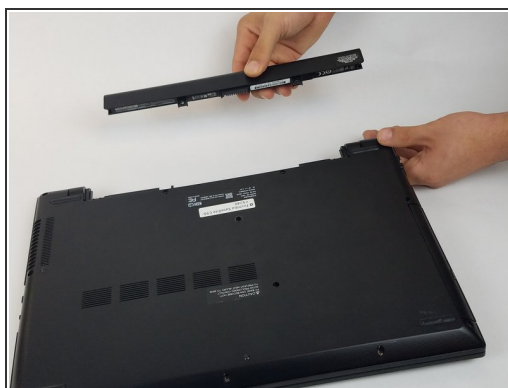
## Step 1 — Battery



 Make sure you turn off the laptop before starting.

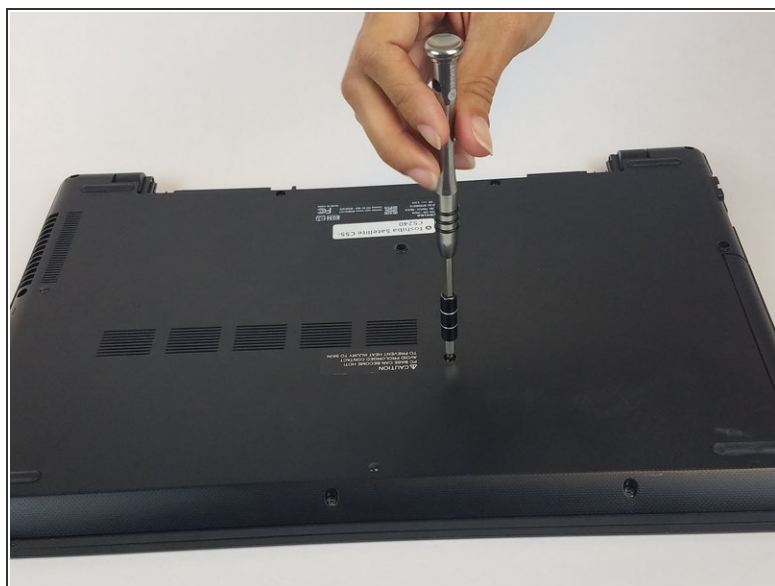
- Remove the two 6.5mm PH1 Phillips screws securing the battery.

## Step 2



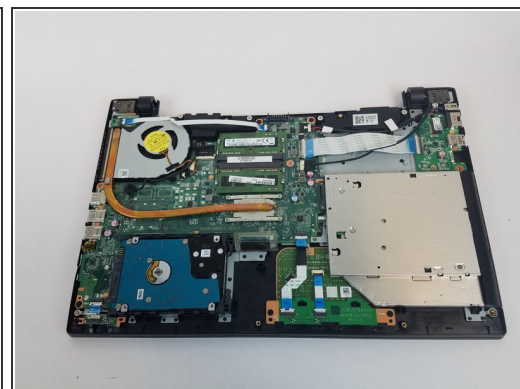
- Pull the battery out, keeping it flat and parallel to the laptop so that it slides out easily.

## Step 3 — Back cover



- Unscrew the ten 6.5mm PH1 Phillips head screws that hold down the back cover.

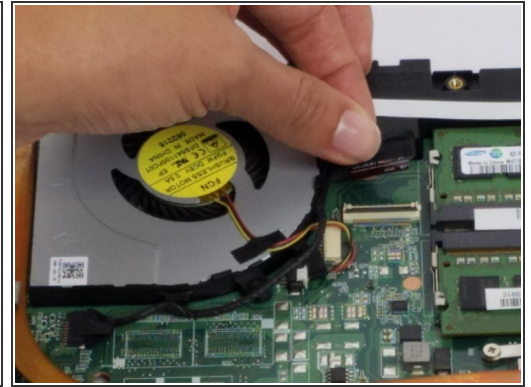
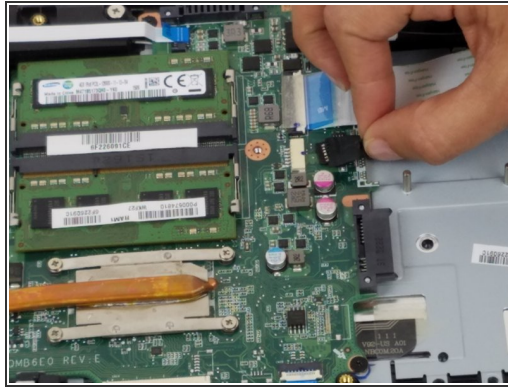
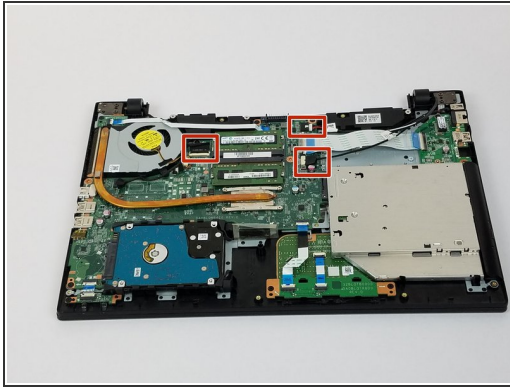
## Step 4



- Using the plastic opening tools, open the back cover and remove it from the laptop.
- ⓘ It is recommended that you start from a corner and run the tool along the edge of the cover.
- ⚠ Be careful not to bend or crack the cover.

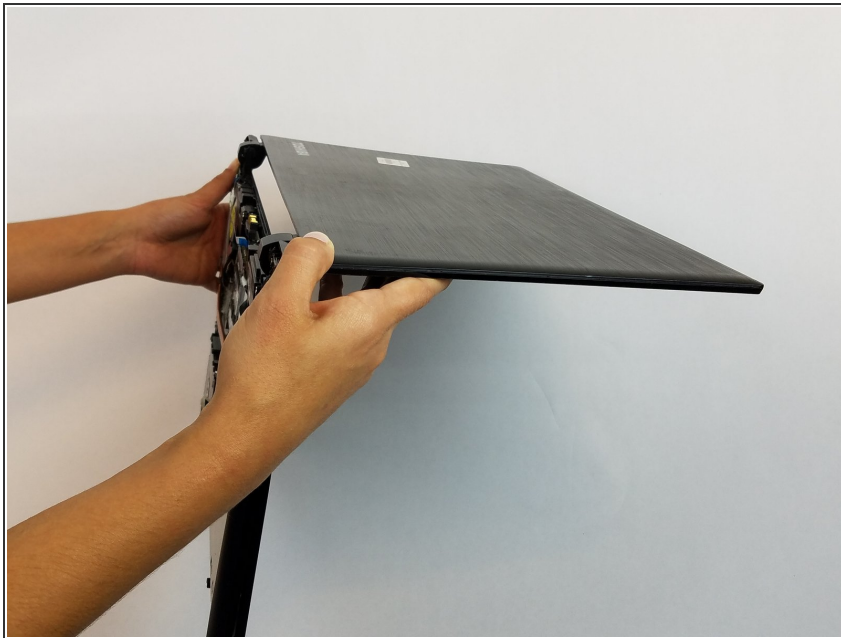


## Step 5 — Screen



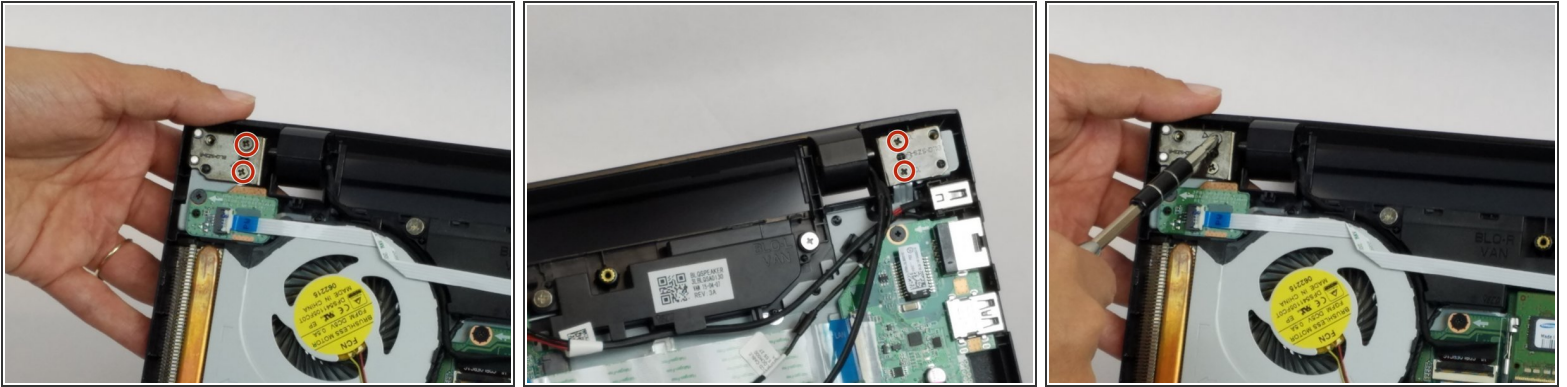
- Carefully disconnect these three cables.

## Step 6



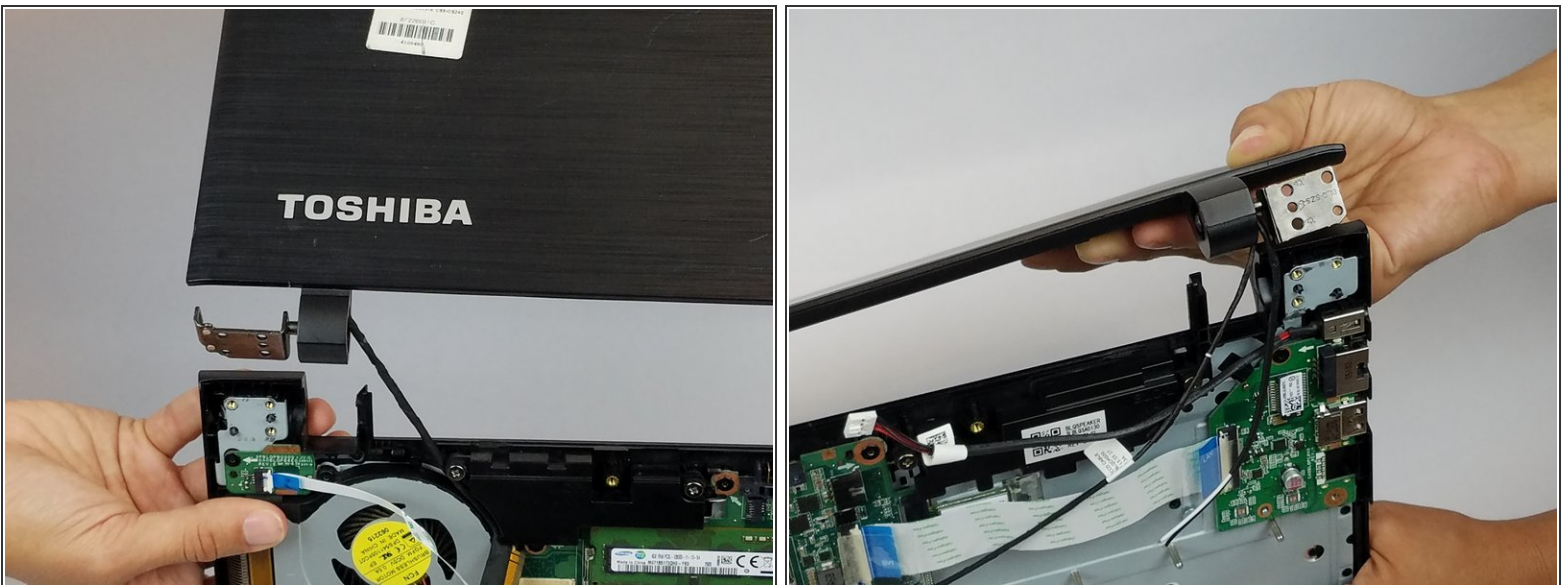
- Open the laptop at a right angle to make the later removal much easier.

## Step 7



- Unscrew the four PH1 Phillips head screws on the hinges.

## Step 8



- Separate the screen from the rest of the laptop.
- ⓘ Make sure the cables do not catch on the bottom piece.

## Step 9



- Using a pair of tweezers, remove the two stickers on the bottom of the screen.
- Unscrew the two screws underneath.

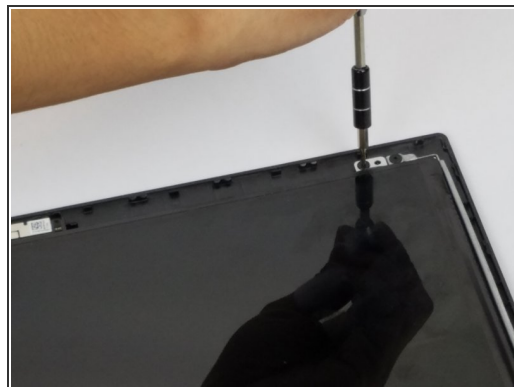
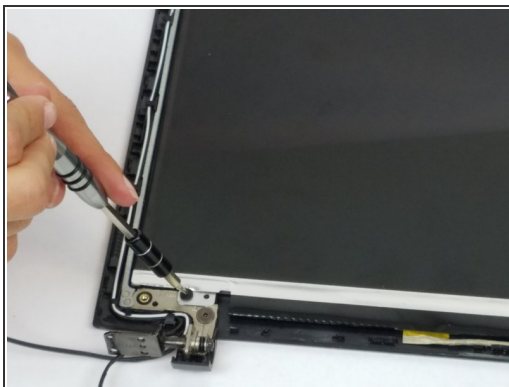
## Step 10



- Stick the plastic opening tool underneath the screen bezel and run it along the edge of the screen.
- ⓘ Loosen each hinge separately, it would be more difficult otherwise.



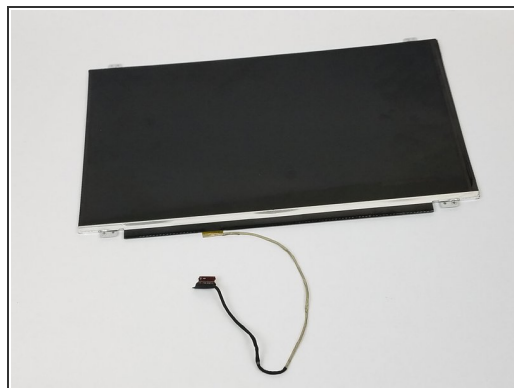
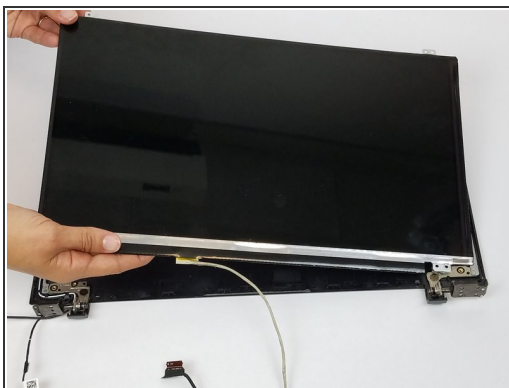
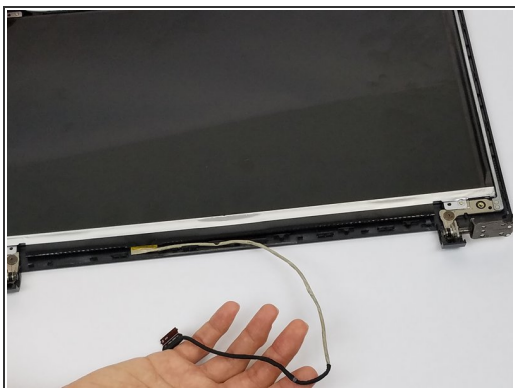
## Step 11



- Unscrew the four inner screws around the screen.

**i** Leave the two outer screws on the top alone.

## Step 12



**i** Mind the cable on the bottom of the screen.

- Simply lift the screen out.

To reassemble your device, follow these instructions in reverse order.