



HP Compaq nc8430 Fan Replacement

HP Compaq nc8430 Fan Replacement.

Written By: Andrea Funes



INTRODUCTION

The maintaining of a clean fan promotes the smoothly functioning of the computer.

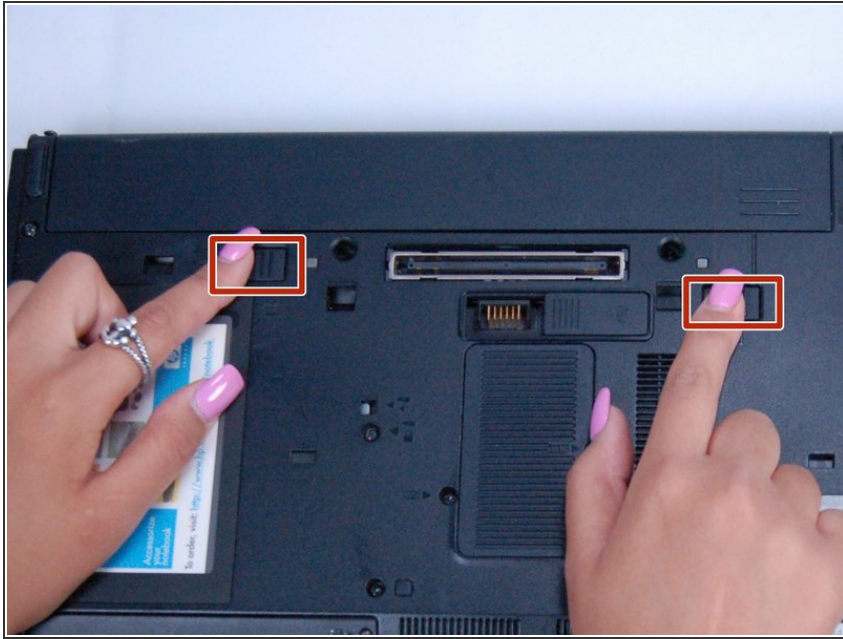


TOOLS:

- [JIS Driver Set](#) (1)

J1

Step 1 — Battery



- ⚠ Completely shut down the device and unplug any adapters and cords connected to the device.
- Carefully flip the device over so that the bottom is facing up.
- Slide both of the latches to the left.

Step 2




- Slide up against the three lines the battery has.

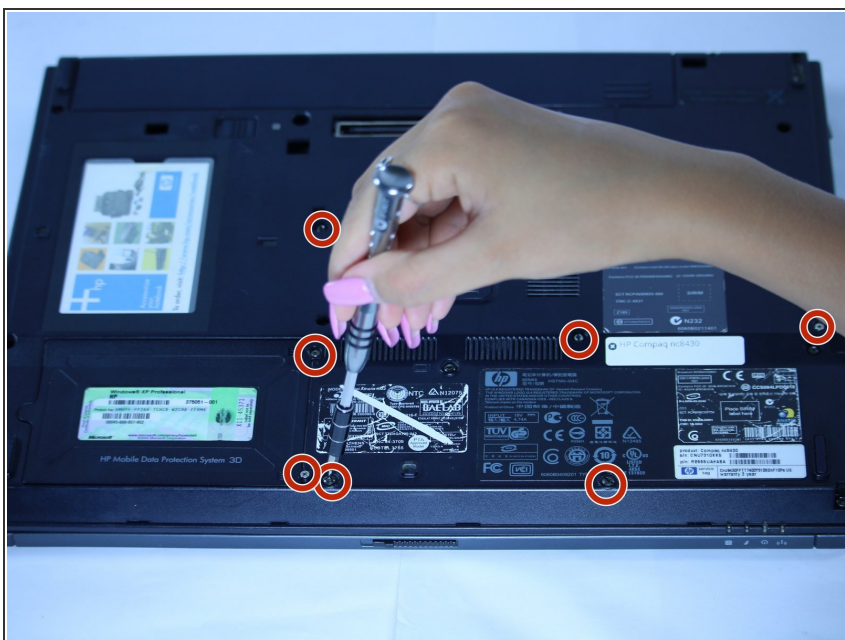
Step 3



- Slide the battery up and away from the laptop.

 Slowly remove the battery to prevent any connectors from getting damaged.

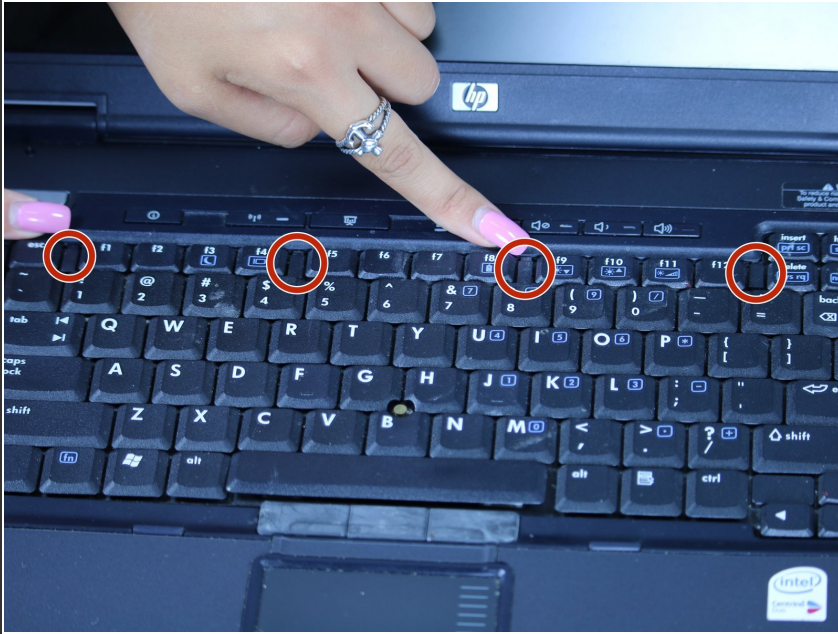
Step 4 — Fan



- Use a J1 screwdriver to remove each screw on the bottom of the computer. This will allow for the

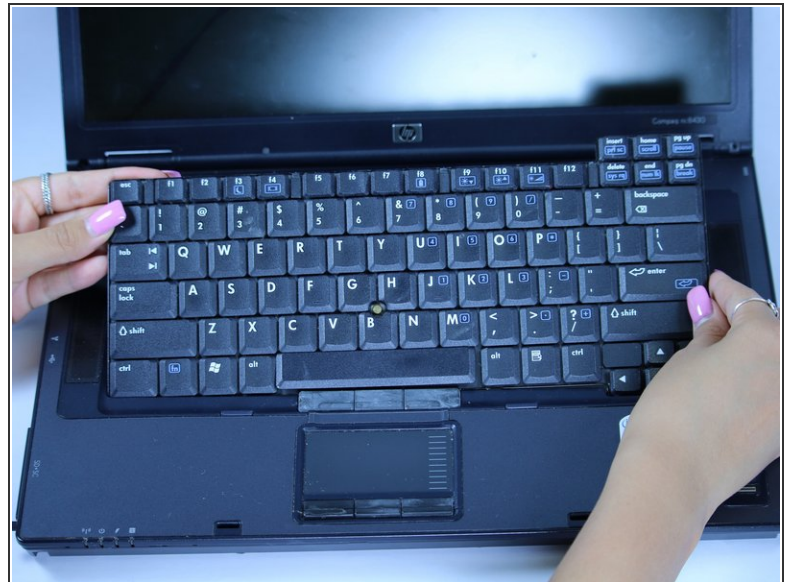
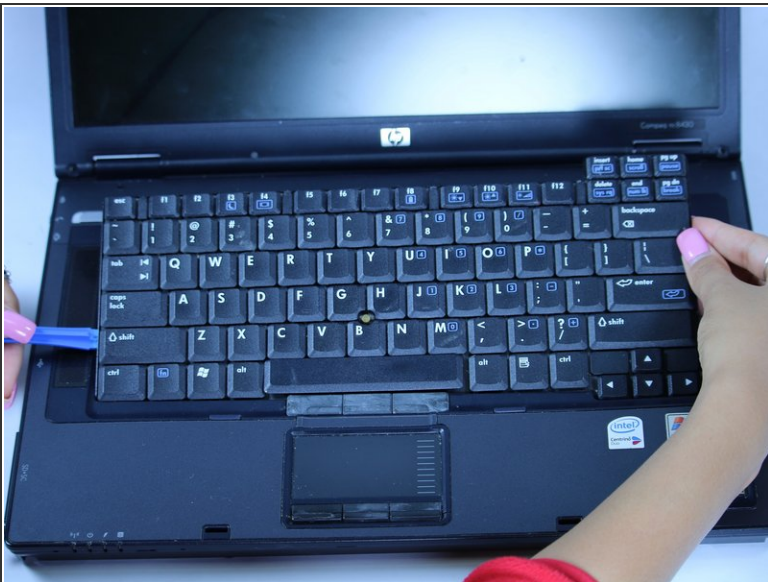
opening of the laptop to gain access to the fan.

Step 5



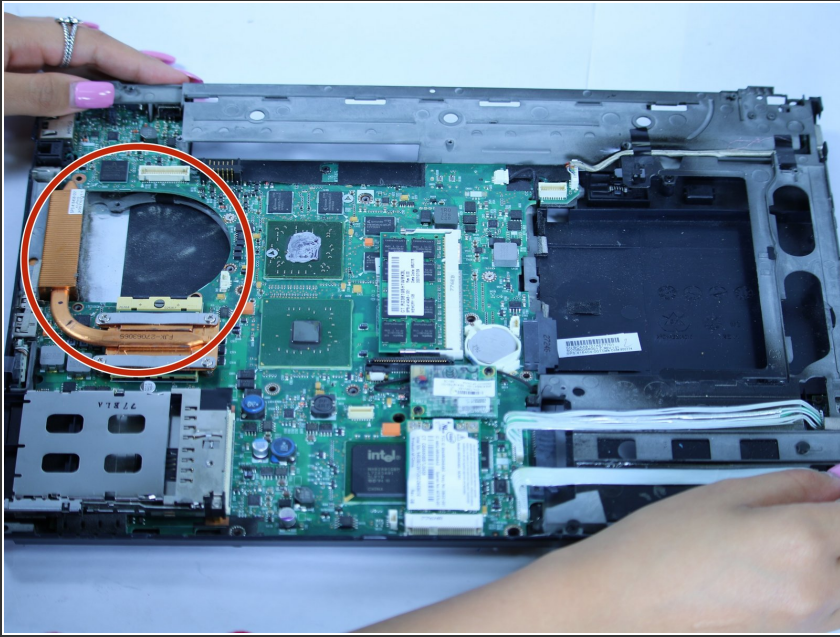
- Now that you have unscrewed most of the bottom of the laptop, carefully flip it back over.
- Press down firmly on the four latches shown in the photo to detach the keyboard. This will unlock the latches holding the keyboard down, doing this will grant you access to the inside of the computer.

Step 6



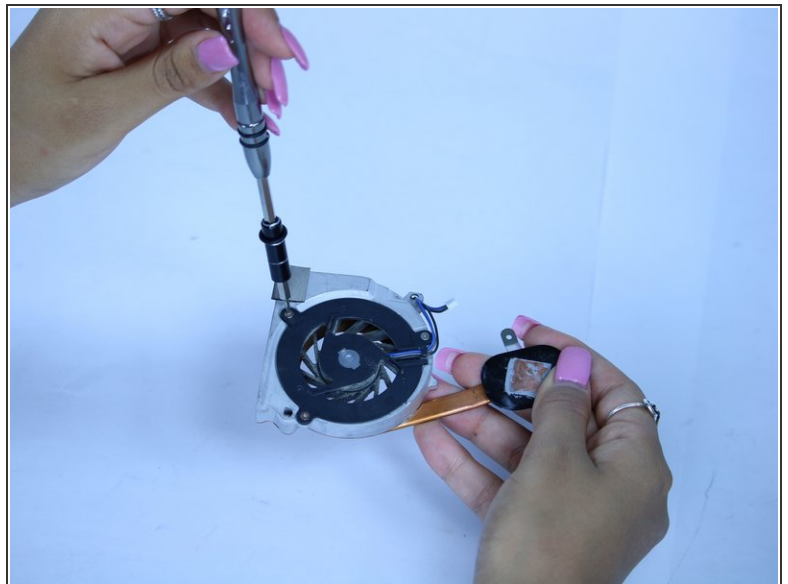
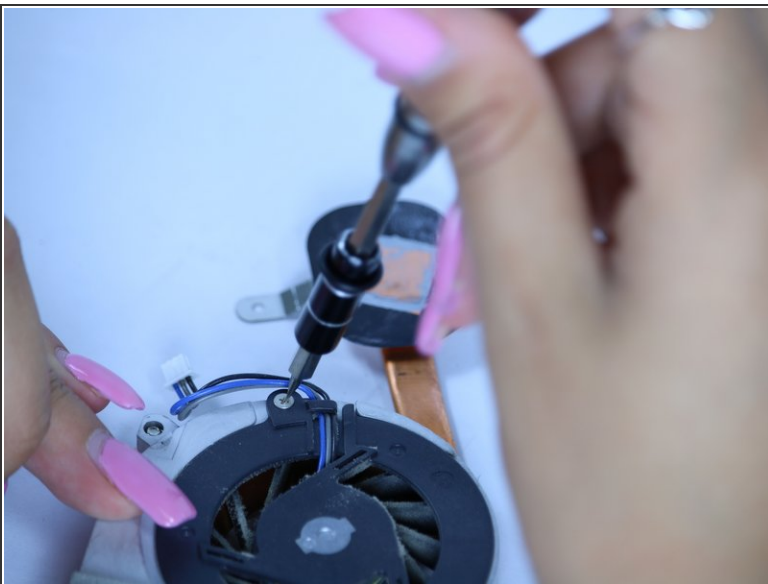
- Remove the keyboard carefully now that it is detached, and use the pry tool to assist you in the removal of the keyboard.

Step 7



- Now your laptop should have no screws and no keyboard.
- You should now be able to open up the base of the laptop. With a bit of force, detach the sides latches of the base by pulling them open carefully.
- Your computer should now look like the provided photo, where you can see where the fan is located.

Step 8



⚠ Carefully remove fan by detaching the blue and white plug from the main socket.

- Continue to unscrew all screws to completely disassemble to gain complete access to the computer's fan.

Step 9



- As an extra precaution, please check for any dirt or debris that are preventing the fans complete functionality.
- ⓘ Use a cotton swab and alcohol to clean the fan before re attaching it to ensure smooth functioning of the fan.

To reassemble your device, follow these instructions in reverse order.