



# Insignia Flex Elite 7.85 Battery Replacement

If your Insignia Flex Elite 7.85 will not turn on or charge, you need to replace the battery.

Written By: Antonio Olivieri



---

## INTRODUCTION

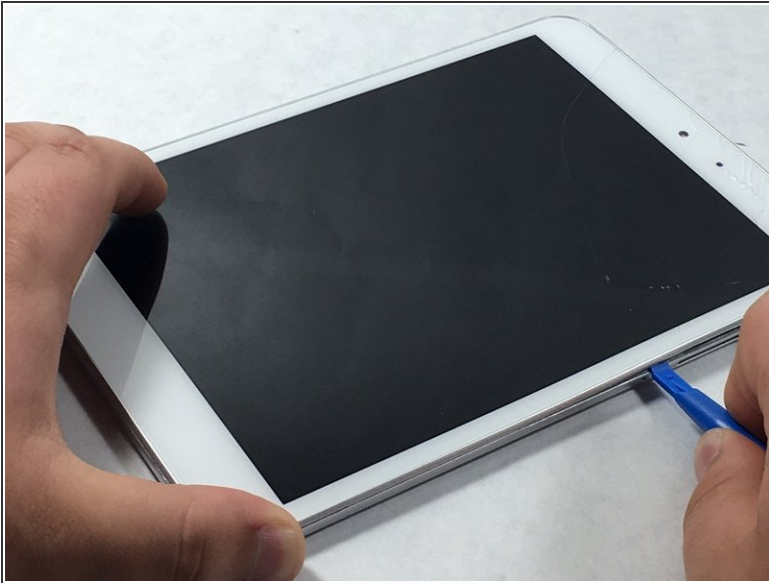
If your Insignia Flex Elite 7.85 will not turn on or charge, you need to replace the battery.





### TOOLS:

- [iFixit Opening Tools](#) (1)
-

## Step 1 — Battery

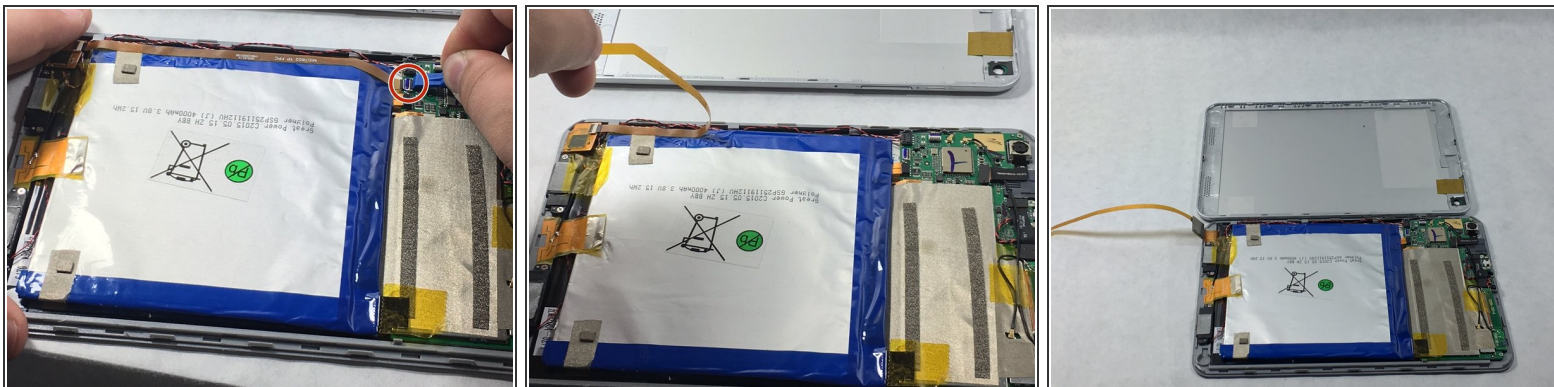


 Make sure the device is turned off before taking it apart to avoid any injuries

- Use a plastic opening tool to remove the metal backing of the tablet.
  - Insert the plastic opening tool between the screen and metal backing. Use a prying motion to lift the front case from the metal panel.
  - Move the tool around the perimeter of the device until the screen separate.
-  The volume and power button will become free from device when the screen and metal backing are separated. These small pieces are easy to lose, be careful. They're easy to put back into place when reassembling the tablet.

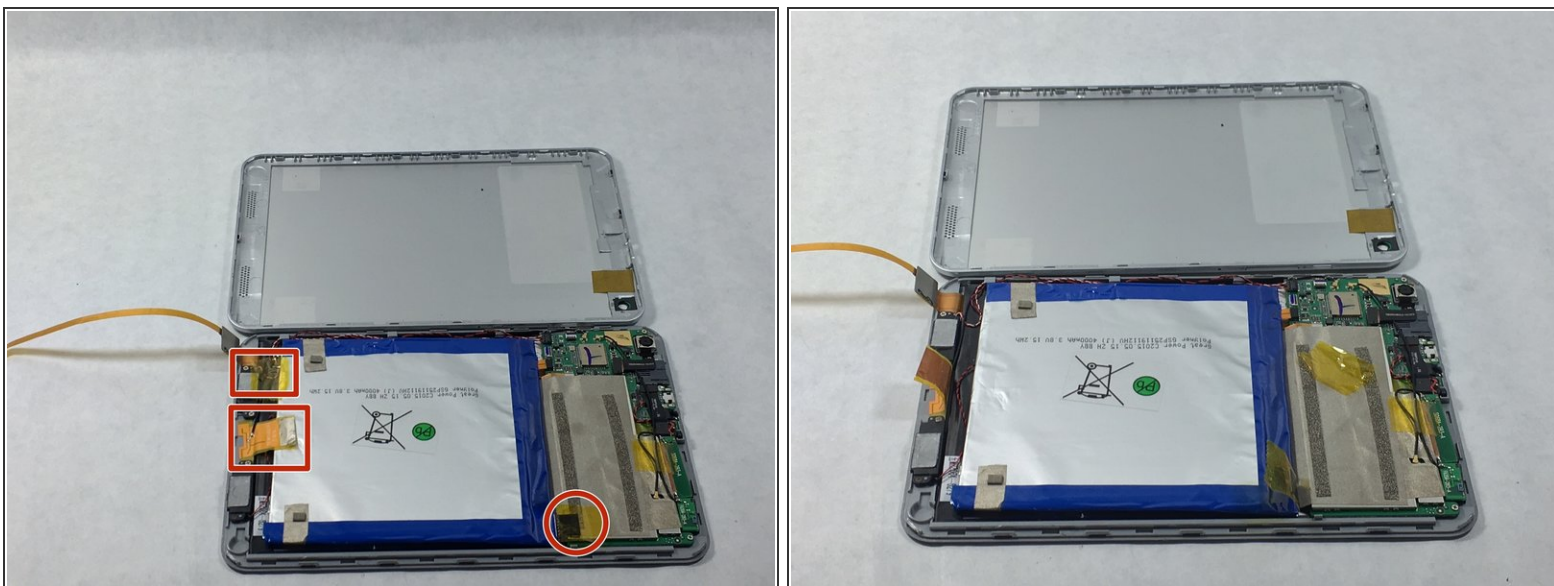


## Step 2



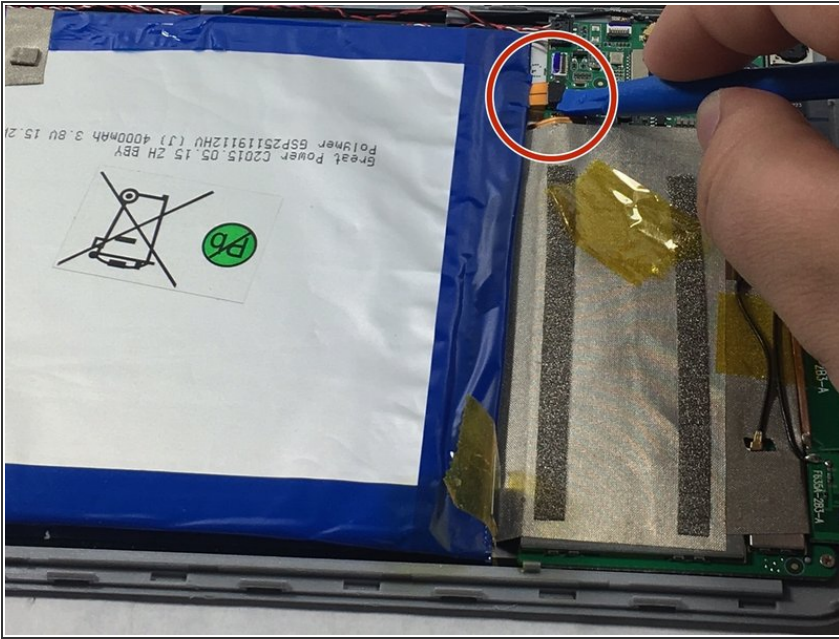
- Use a plastic opening tool to free the orange connector ribbon by placing the tool on the connector. Then peel the connector ribbon and bend it backwards so it is not in the way.

## Step 3



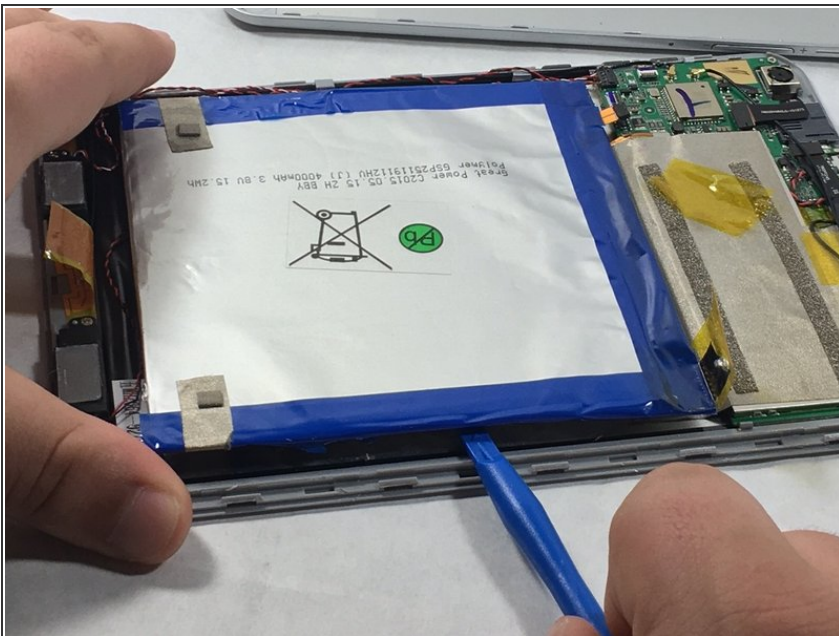
- Peel back the three pieces of tape circled in the picture.

## Step 4



- Free the battery from the motherboard by prying slightly with the opening tool

## Step 5

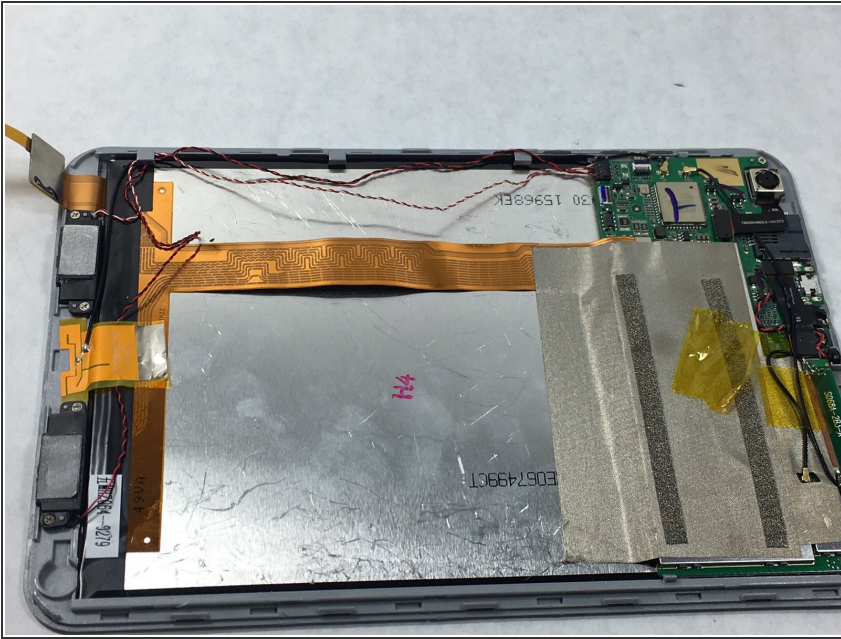


- Use the plastic opening tool to remove the battery from the screen.
- Use a plastic opening tool to gently but firmly pry the battery up along the edges until it is free.

⚠ Do not bend or puncture the battery or the battery will begin to leak.

ⓘ This step takes the longest. Be careful and do not rush through it. The glue on the back of the battery is difficult to free up.

## Step 6



- The battery should be removed from the tablet. Now replace the battery.

To reassemble your device, follow these instructions in reverse order.