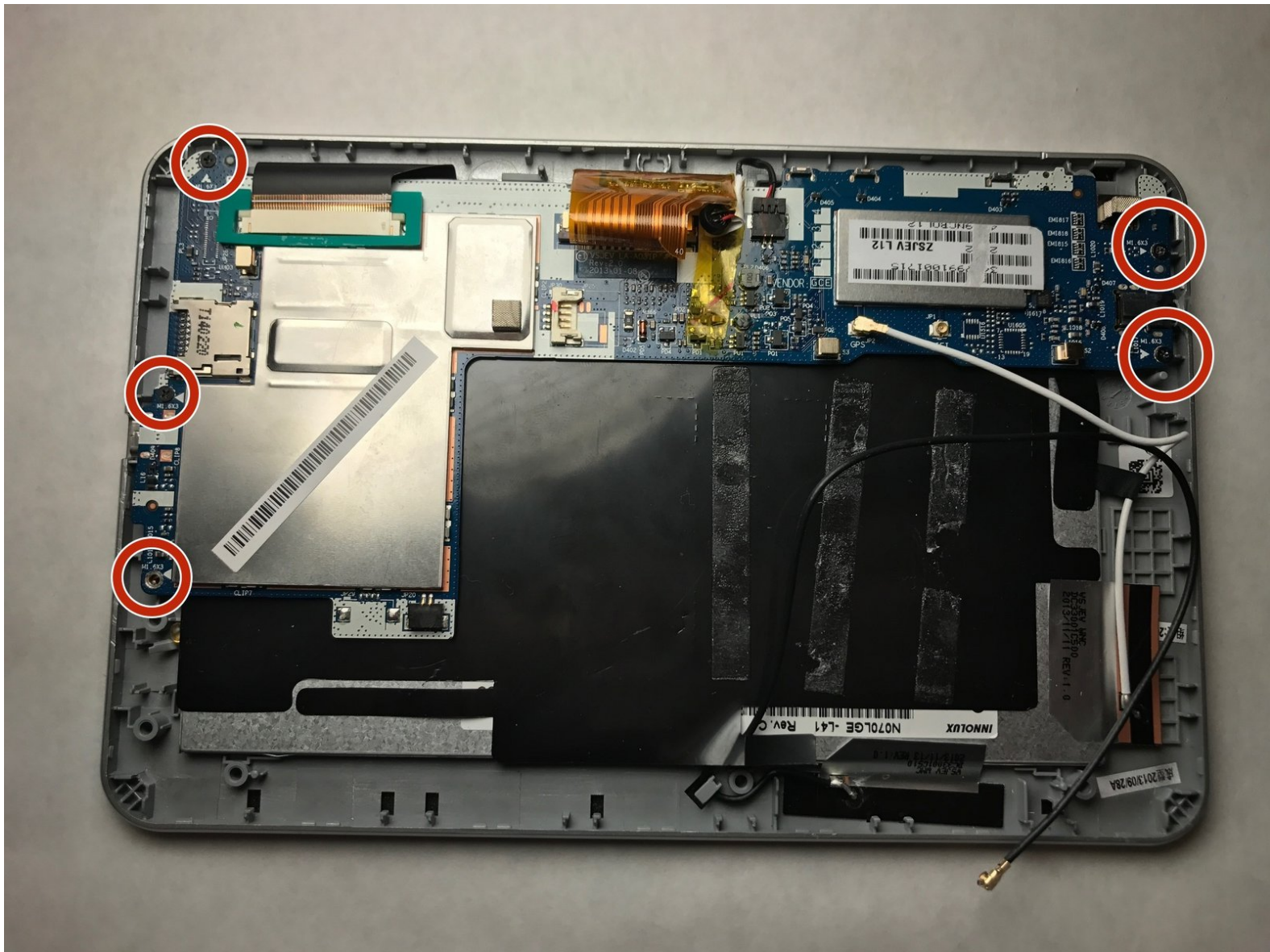




Acer Iconia B1-710 Screen Replacement

If the screen on your Acer Iconia model B1-710...

Written By: Ryan Weber



INTRODUCTION

If the screen on your Acer Iconia model B1-710 tablet is not working or is damaged, use this guide to help you replace the screen. If the screen is shattered, please use caution when first handling the device as glass shards may be present. Before you begin, make sure the device is not connected to any charging ports and is powered off.



TOOLS:

- [Phillips #000 Screwdriver](#) (1)
 - [Metal Spudger](#) (1)
 - [iFixit Opening Tool](#) (1)
 - [Hair Dryer](#) (1)
-

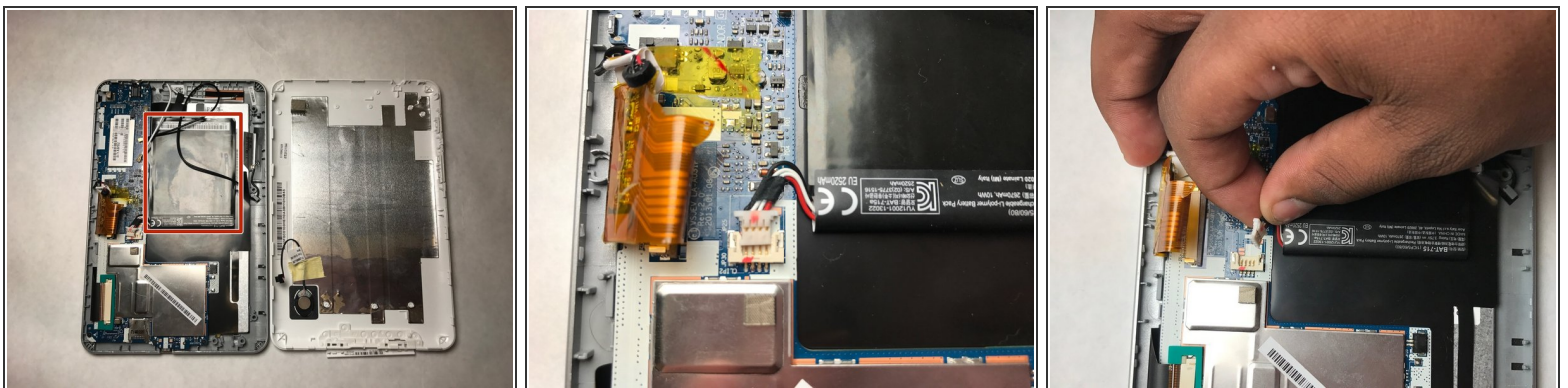
Step 1 — Battery



- Open the back cover by prying the casing off with an opening tool.

⚠ Be careful to not pull pieces apart aggressively. There is a wire that could break.

Step 2



- Unplug the battery from the motherboard.

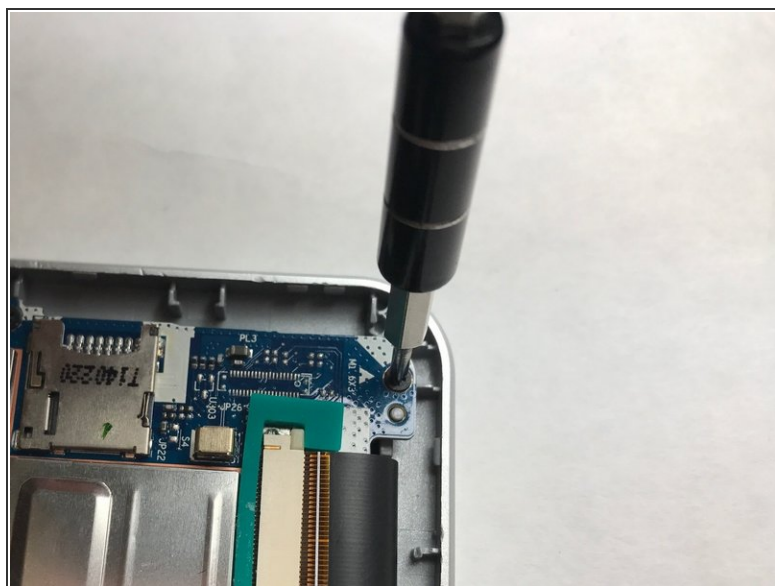
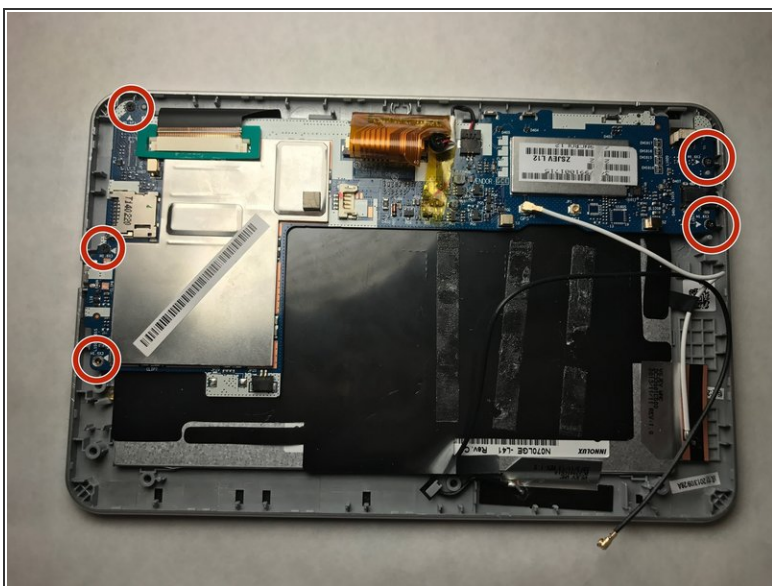
Step 3



- Remove the battery.

i The battery is lightly glued in, so there may be some difficulty getting it out.

Step 4 — Screen



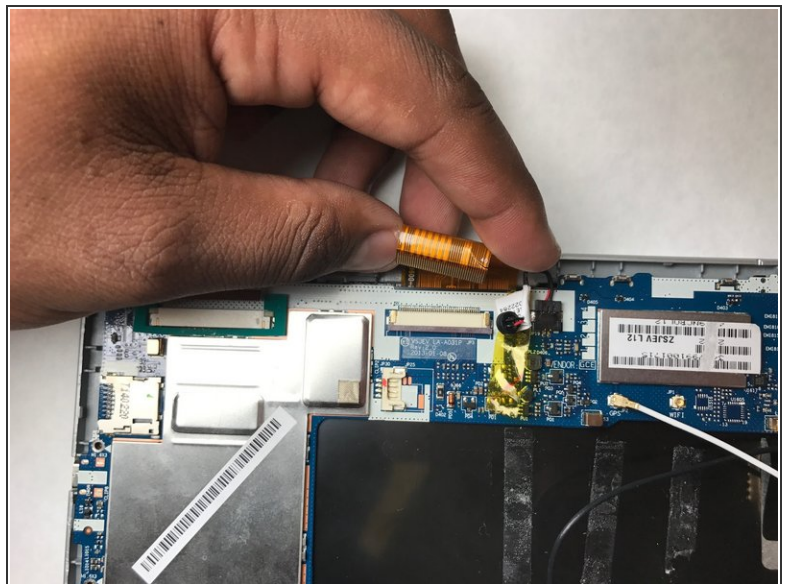
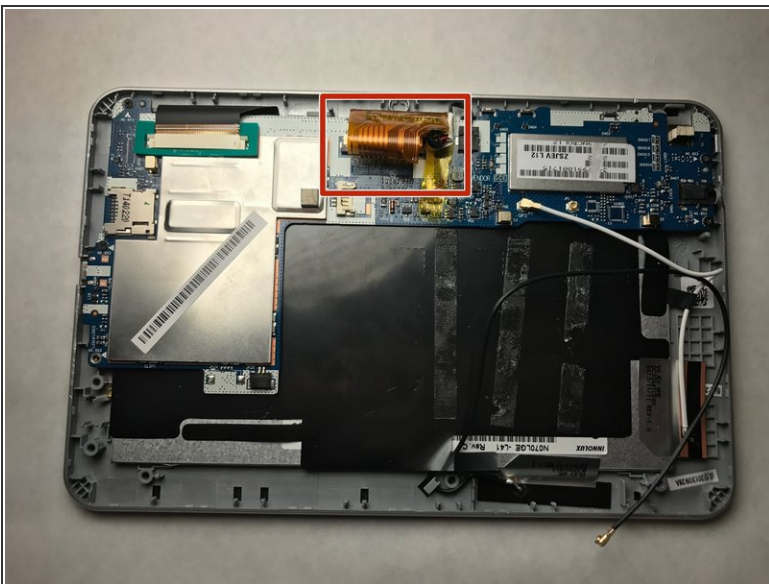
- Unscrew all five 3 mm #000 Phillips screws.

Step 5



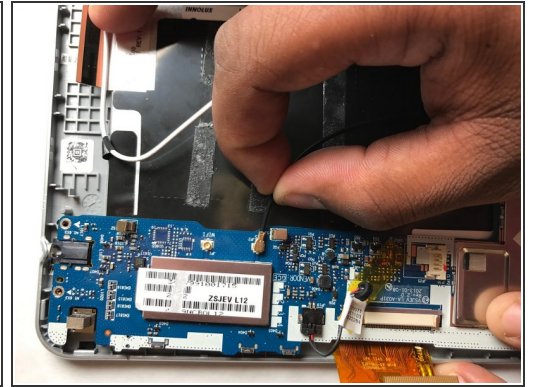
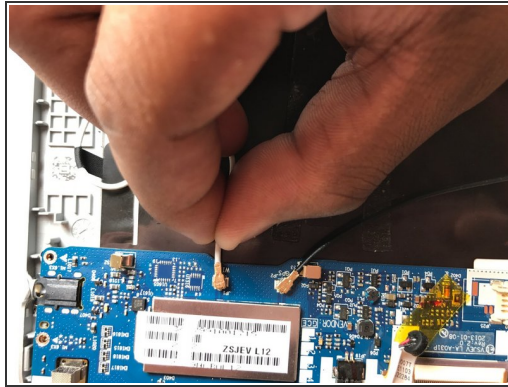
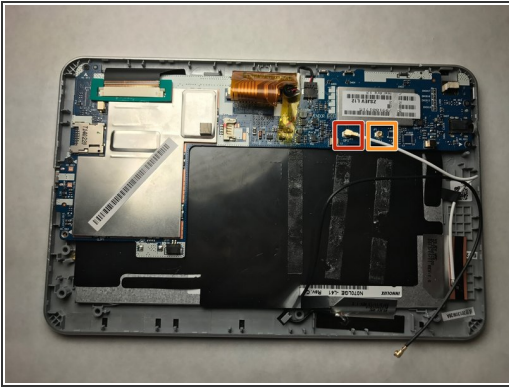
- Unplug the LCD ribbon.

Step 6



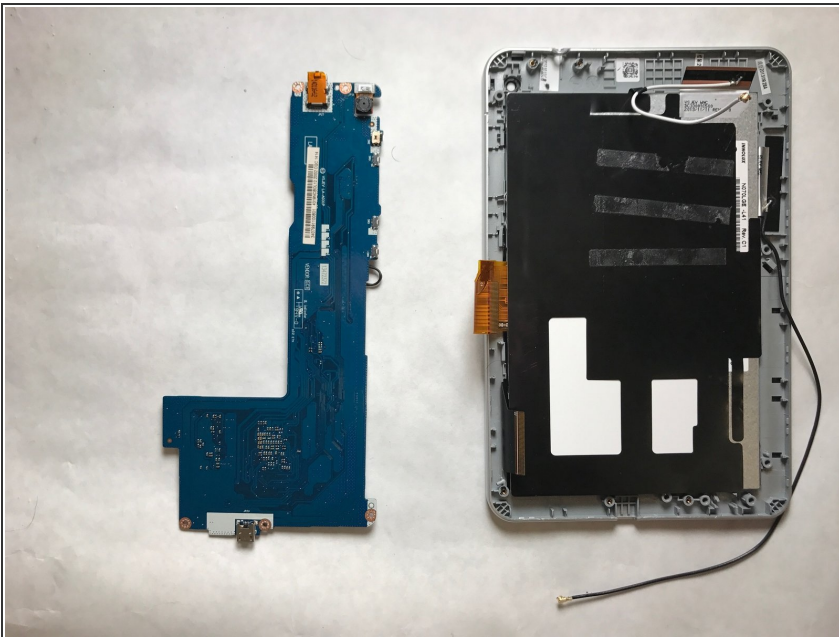
- Unplug the orange ribbon.

Step 7



- Unplug the white wire from the motherboard.
- Unplug the black wire from the motherboard.

Step 8



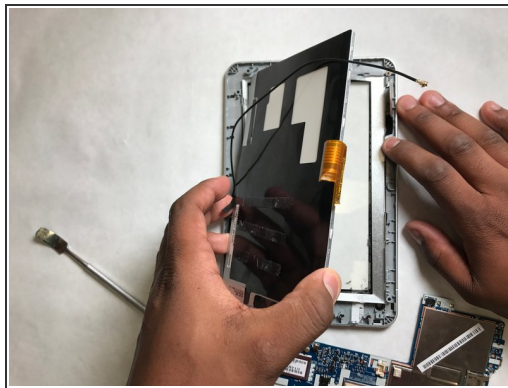
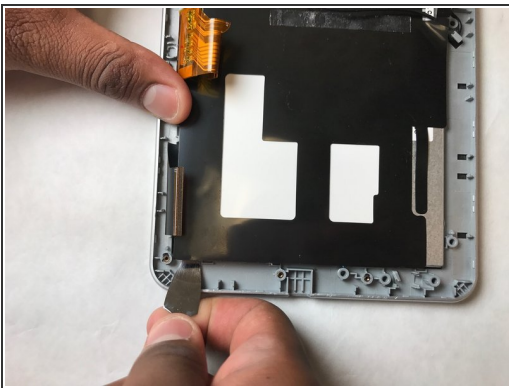
- Pull the motherboard off of the tablet.

Step 9



- Use a blow dryer to melt the glue holding the LCD display in place.
- ⓘ Patience is key. It will take a few minutes to melt the glue.

Step 10

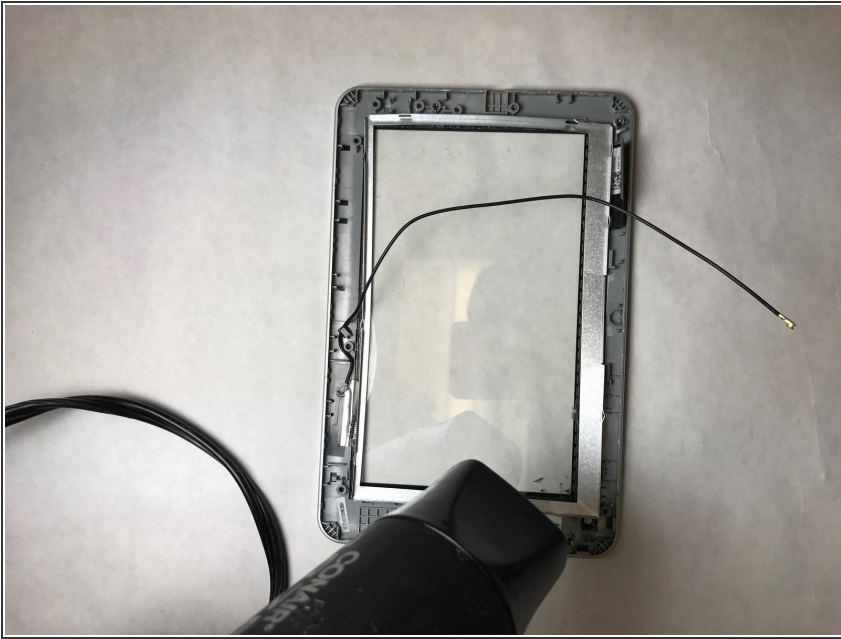


- Peel the LCD display.

⚠ This piece is fragile and needs to be peeled with care.

⚠ Parts may be hot.

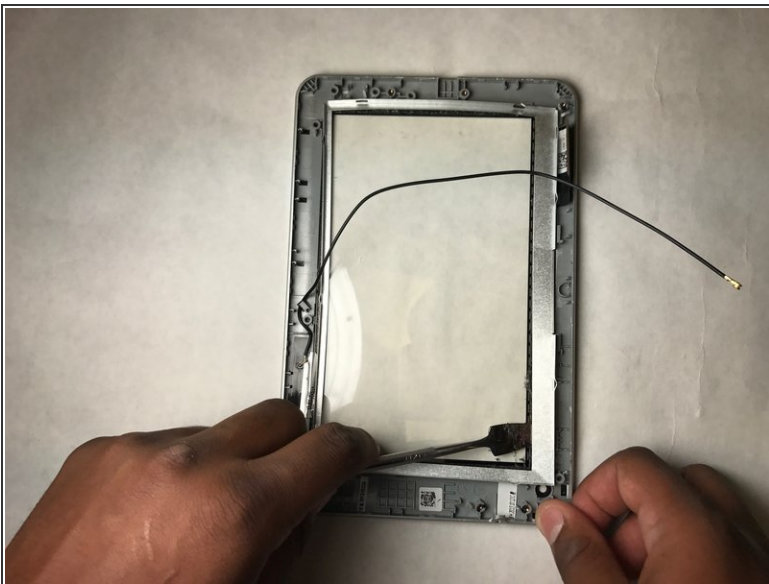
Step 11



- Use a blow dryer to melt the glue from the thin metal frame.

⚠ This piece is metal and will become hot during this process.

Step 12



- Peel off the thin metal frame.

⚠ Be careful not to bend the frame as it is very thin.

Step 13



- Use a blow dryer to melt the glue between the metal frame and the screen.

⚠ The frame will get hot.

Step 14



- Peel the frame from the screen.

⚠ Be careful when peeling the screen or it may sustain further damage.

To reassemble your device, follow these instructions in reverse order.