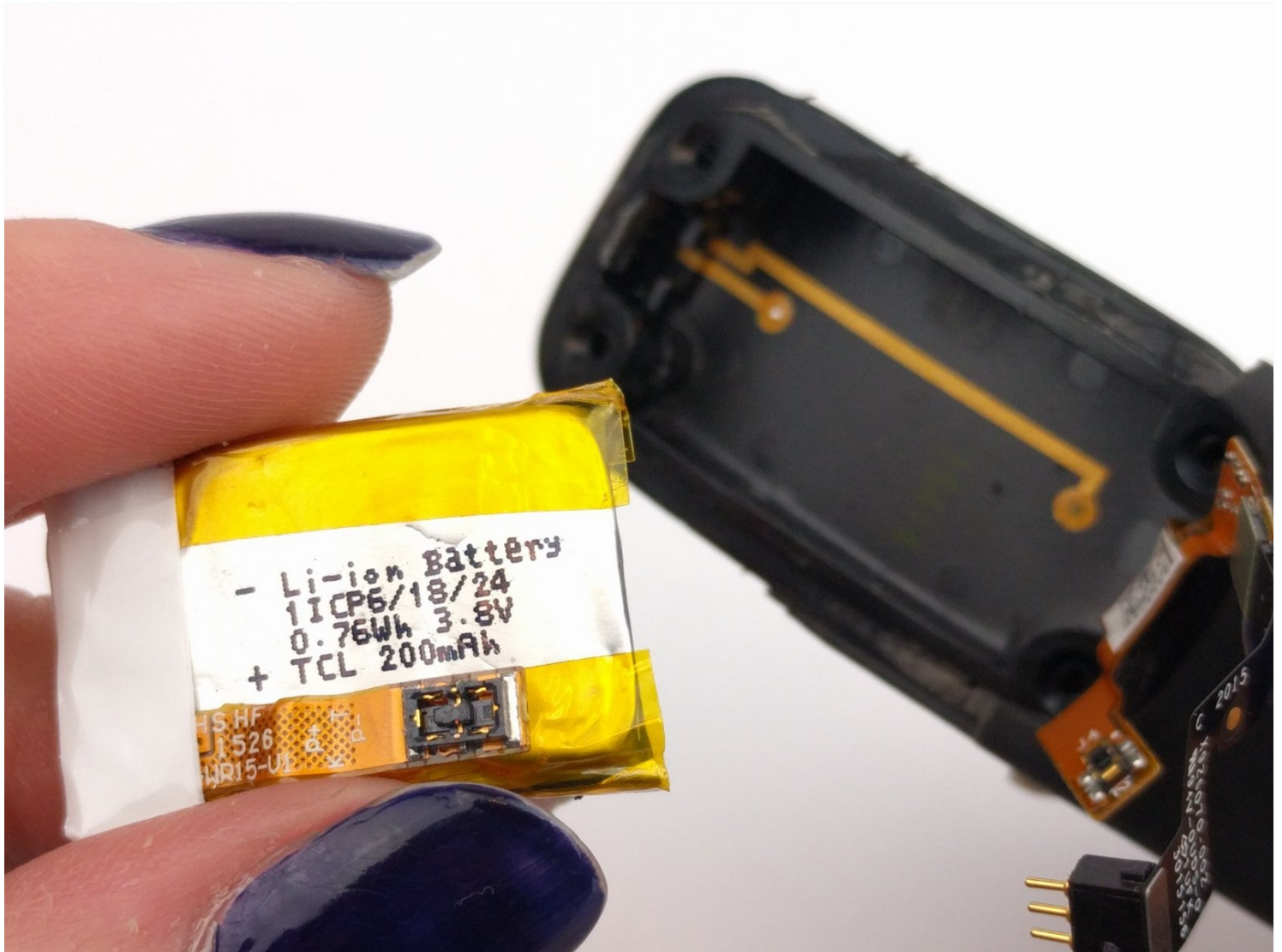




Microsoft Band 2 Battery Replacement

This guide will show you how to remove the...

Written By: Chris Syracuse



INTRODUCTION

This guide will show you how to remove the Microsoft Band 2 battery in case the battery dies out, a common problem in the Band 2.

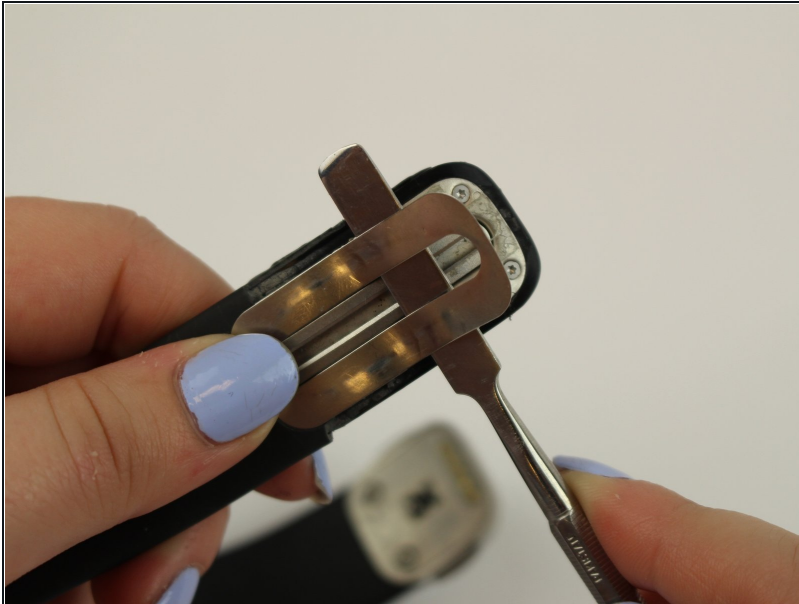
TOOLS:

[T3 Torx Screwdriver](#) (1)
[Metal Spudger](#) (1)
[iFixit Opening Tool](#) (1)
[Tweezers](#) (1)

PARTS:

[Microsoft Band 2 Battery](#) (1)

Step 1 — Battery



- Peel back the metal cover on the end of the watchband.

Step 2



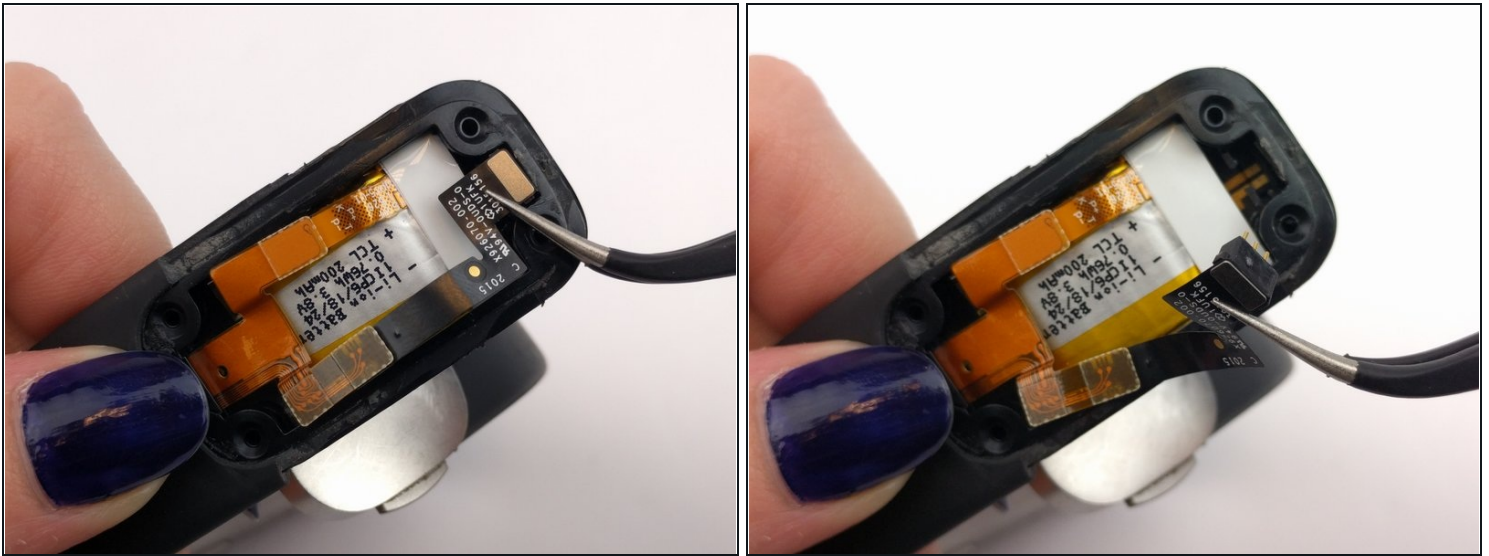
- Use a T3 Torx screwdriver to unscrew the four 6 mm screws on the corners of the metal cover plate.

Step 3



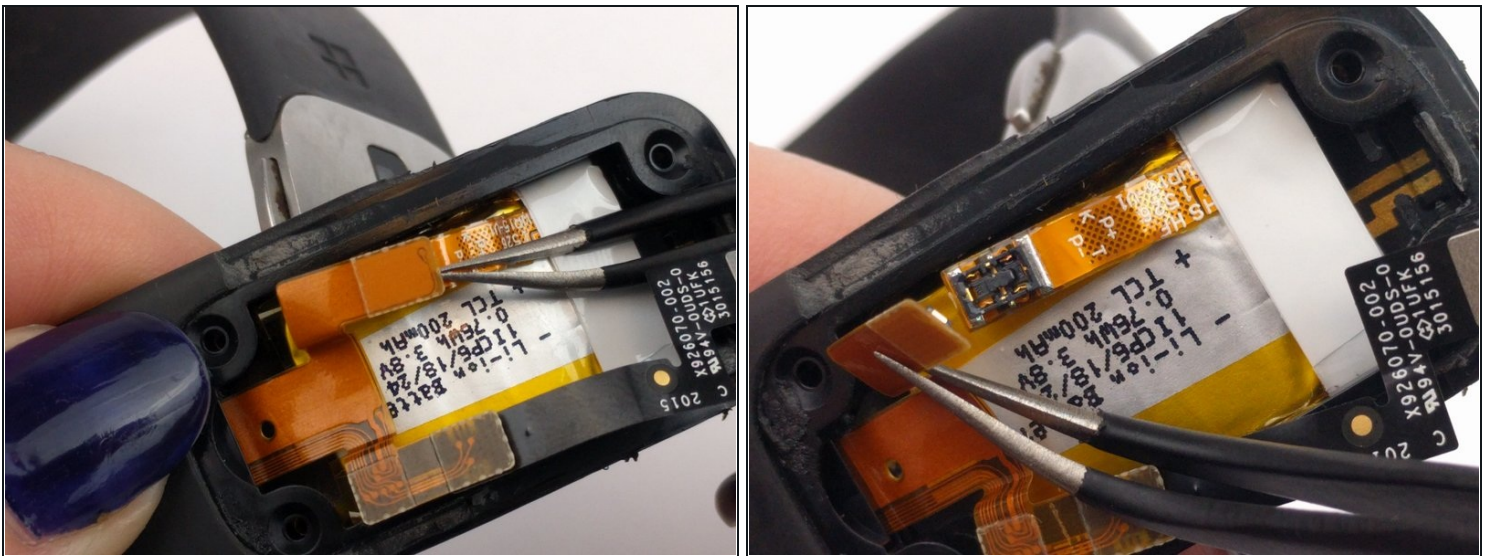
- Use the plastic opening tool to pry off the metal cover plate.

Step 4



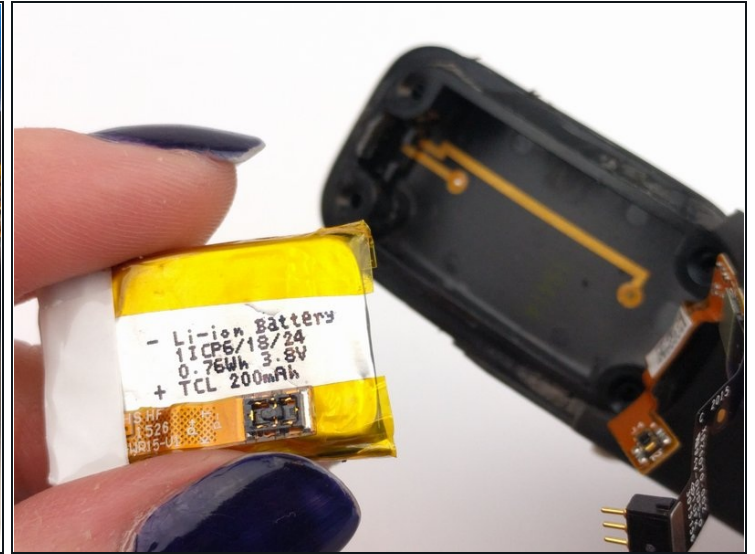
- Detach the black ribbon cable by using the [tweezers](#).

Step 5



- Detach the orange press-fit (or "pop") connector by using the tweezers.

Step 6



- Pry out the battery using the plastic opening tool.

To reassemble your device, follow these instructions in reverse order.