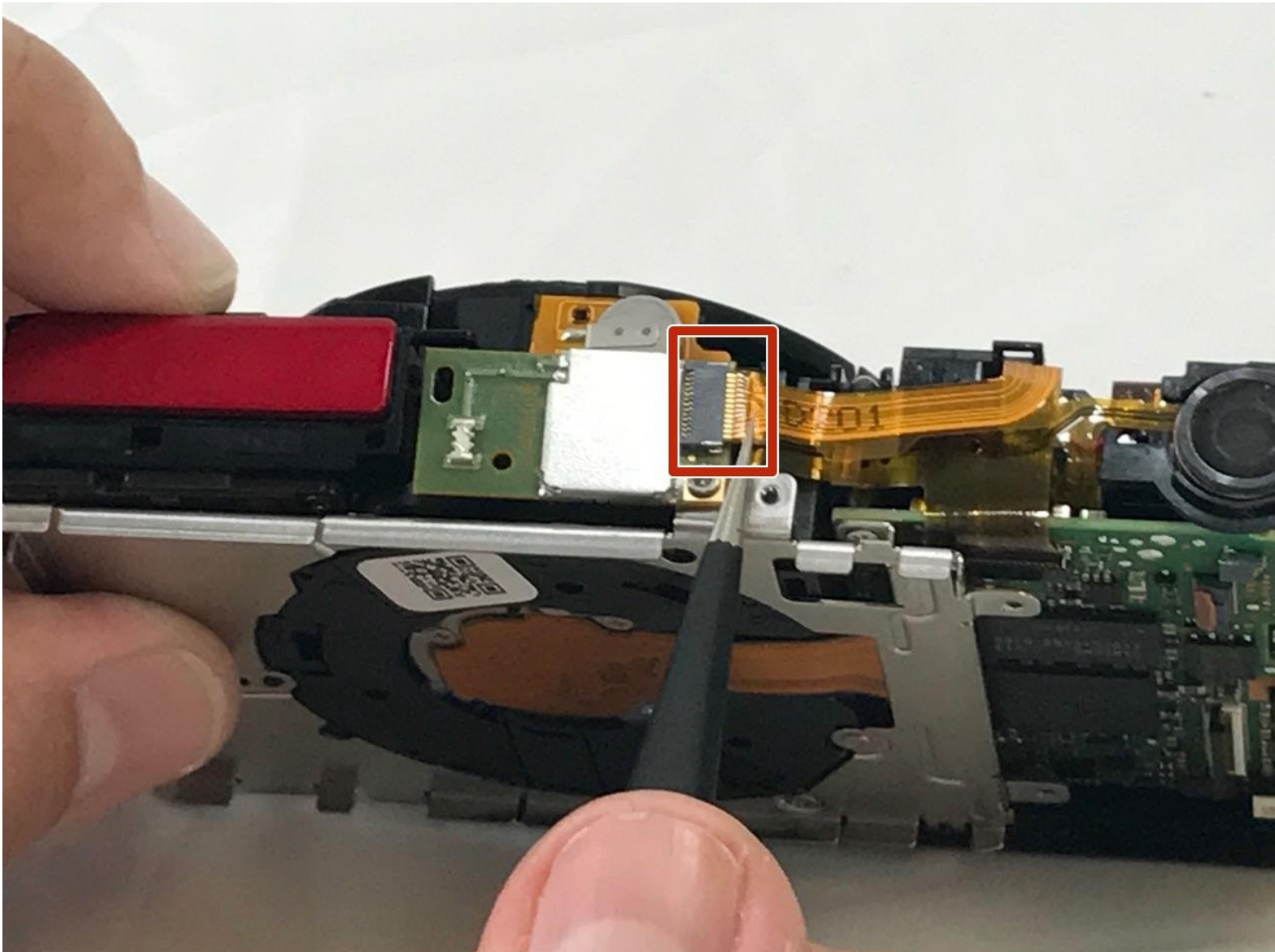




# Canon PowerShot SX600 HS Flash Assembly Replacement

This guide will show you how to replace the camera's flash assembly.

Written By: Scott Childress



---

## INTRODUCTION

By fixing your flash, you can once again take bright, vibrant photographs.

---

### TOOLS:

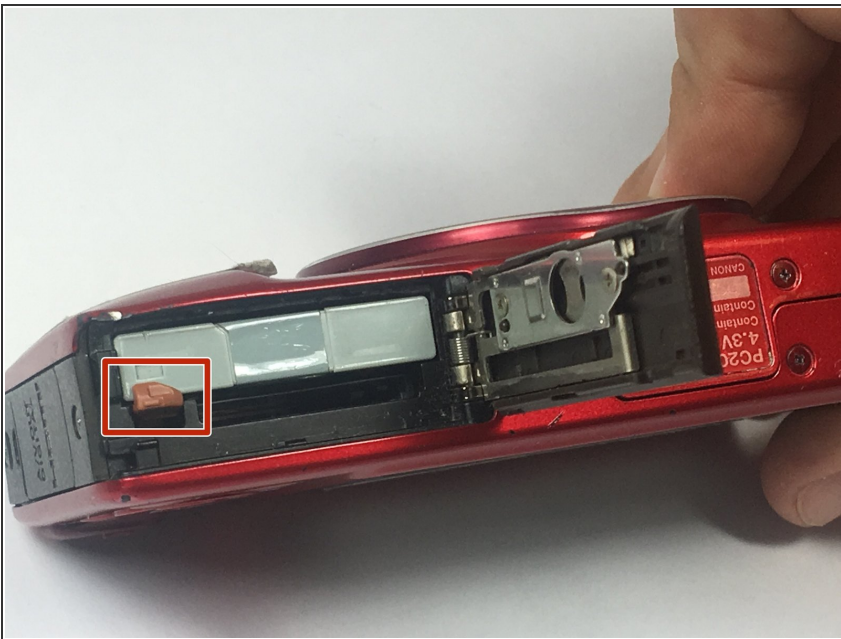
- [Phillips #000 Screwdriver](#) (1)
  - [iFixit Opening Tools](#) (1)
  - [ESD Safe Tweezers Blunt Nose](#) (1)
-

## Step 1 — Battery



- To remove the battery, locate the battery cover on the bottom of the camera.
- Using your thumb, press down on the cover and slide it outwards.

## Step 2



- Depress the orange lever holding the battery in place to unlock it.

## Step 3



- Use your fingers to remove the battery.
- ☑ Be sure to remember the alignment of the nodes for reassembly.

## Step 4 — Power and Shutter Buttons



- Use a #000 Phillips screwdriver to unscrew the four 4mm screws located on the sides of the camera (2 for each side).

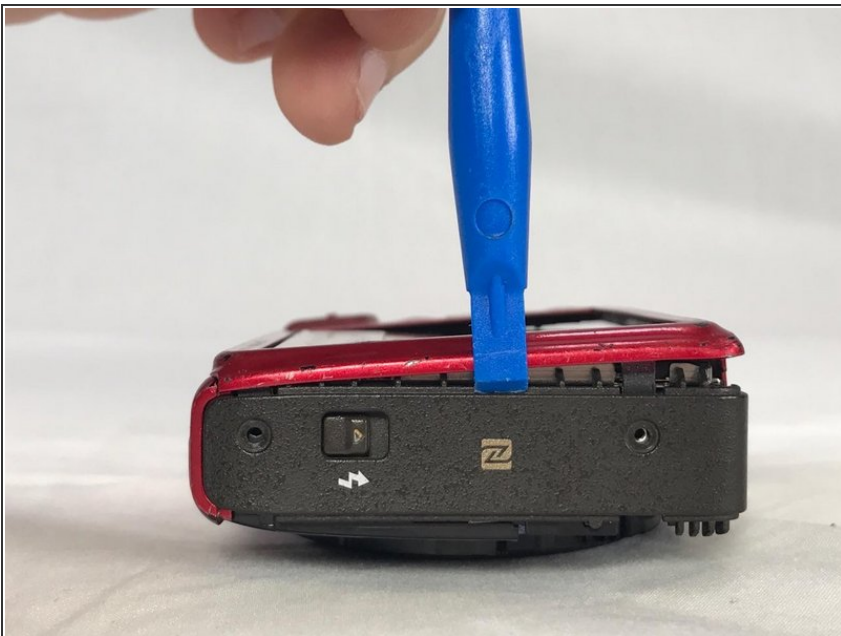


## Step 5



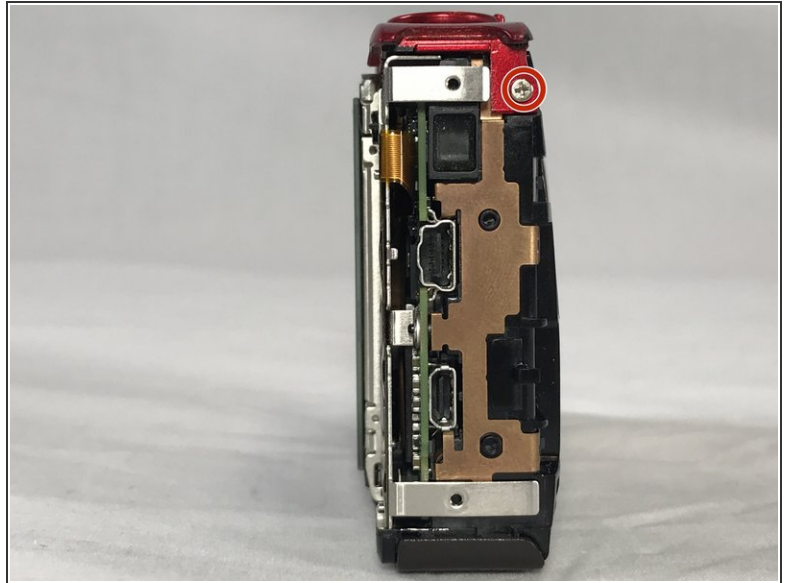
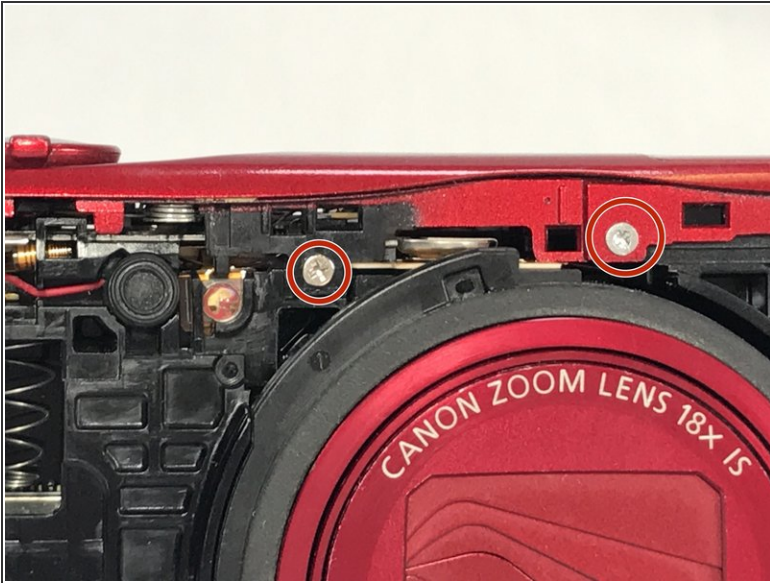
- Unscrew the four 2mm located on the bottom of the camera using a Phillips #000 screwdriver.

## Step 6



- Use a plastic opening tool to loosen and remove both the front and back plates of the camera, as well as the two side pieces.

## Step 7



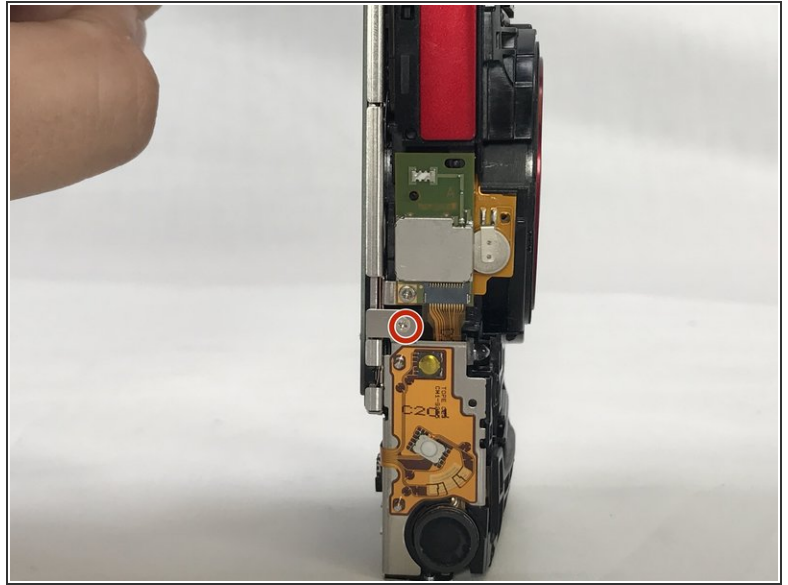
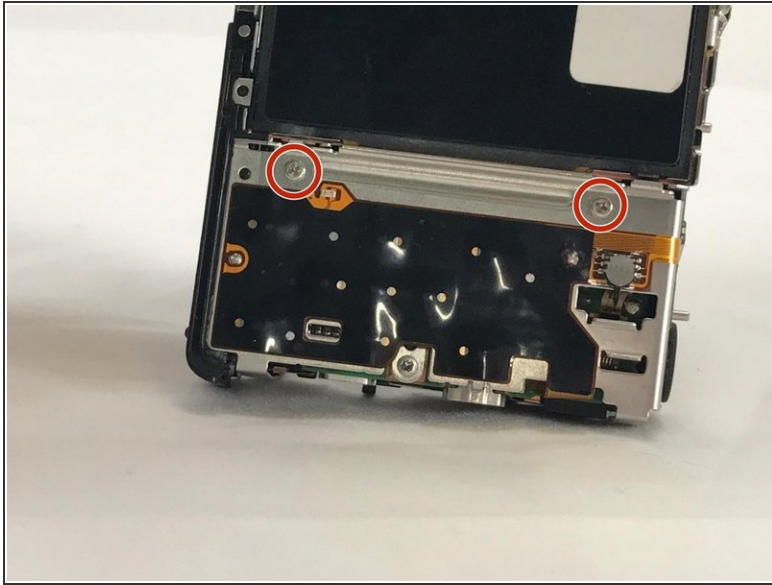
- Unscrew the three 2mm screws attaching the piece to the camera frame with a #000 Phillips screwdriver.

## Step 8



- Use an opening tool to gently remove the power and shutter button assembly from the frame.

## Step 9 — Display Screen



- Unscrew the 2mm screw connections of the main board protector from the camera frame using a #000 Phillips head screwdriver (2 on front, 1 on top)

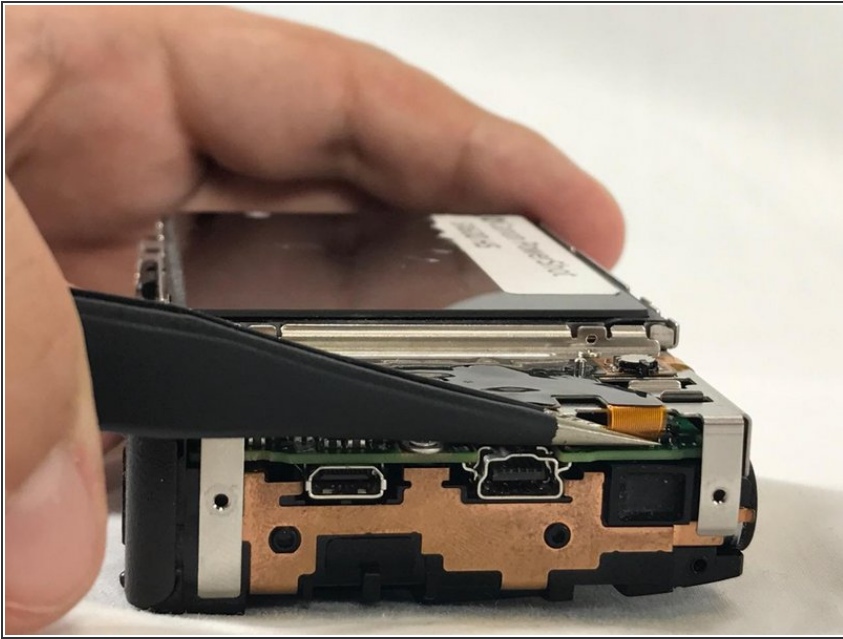
## Step 10



- Use a Phillips #000 screwdriver to unscrew the 4mm screw.



## Step 11



- Use a pair of tweezers to remove the no-fuss connector from its holder.

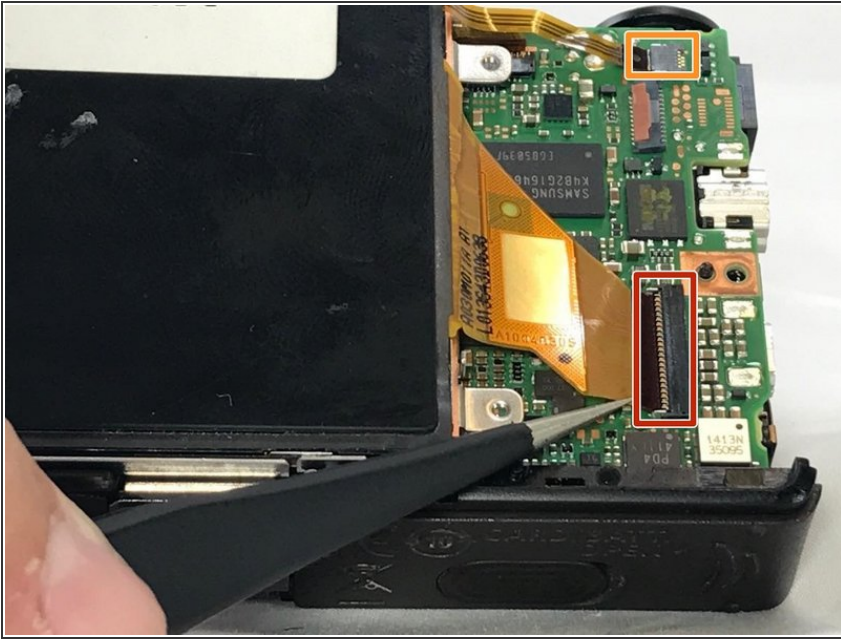
## Step 12



- Gently lift the protector from the frame.

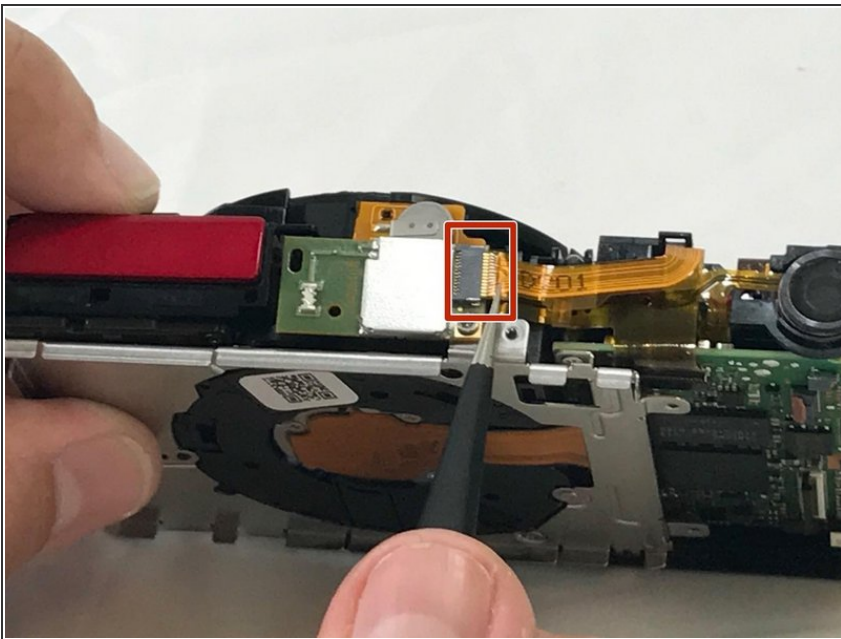


## Step 13



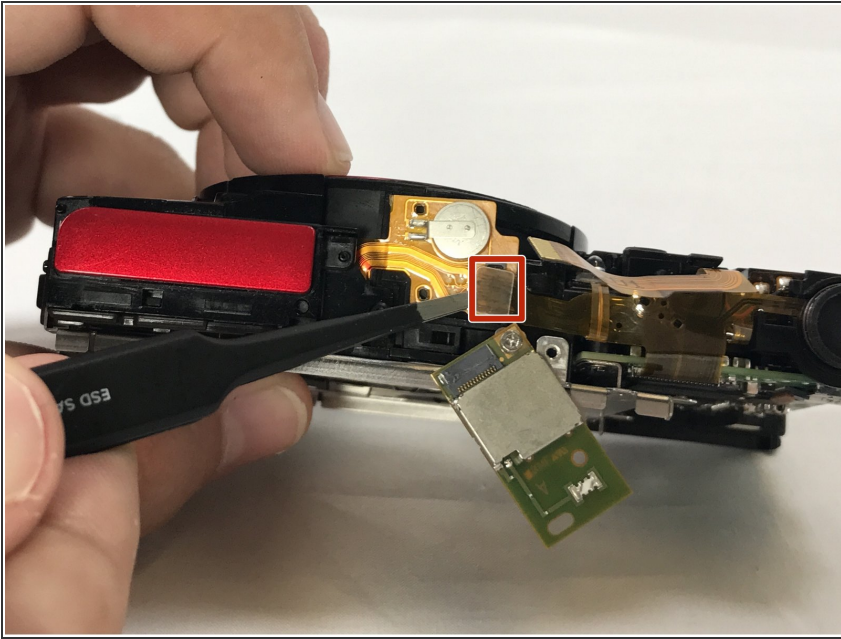
- Lift the LCD screen ZIF connector tab and remove the ribbon cable.
- Detach the no-fuss connector.
- Lift the screen from its holder.

## Step 14 — Flash Assembly



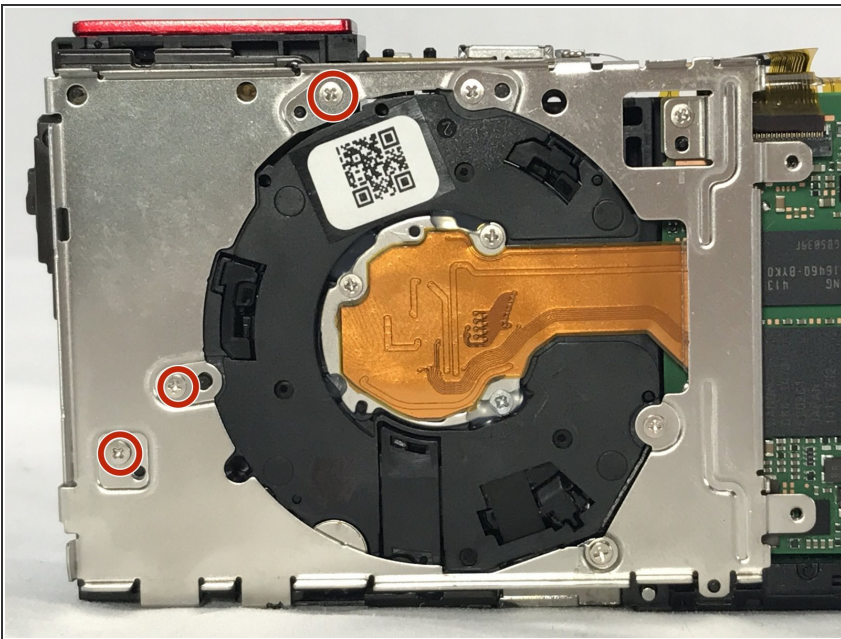
- Unplug the assembly from the main no-fuss connector.

## Step 15



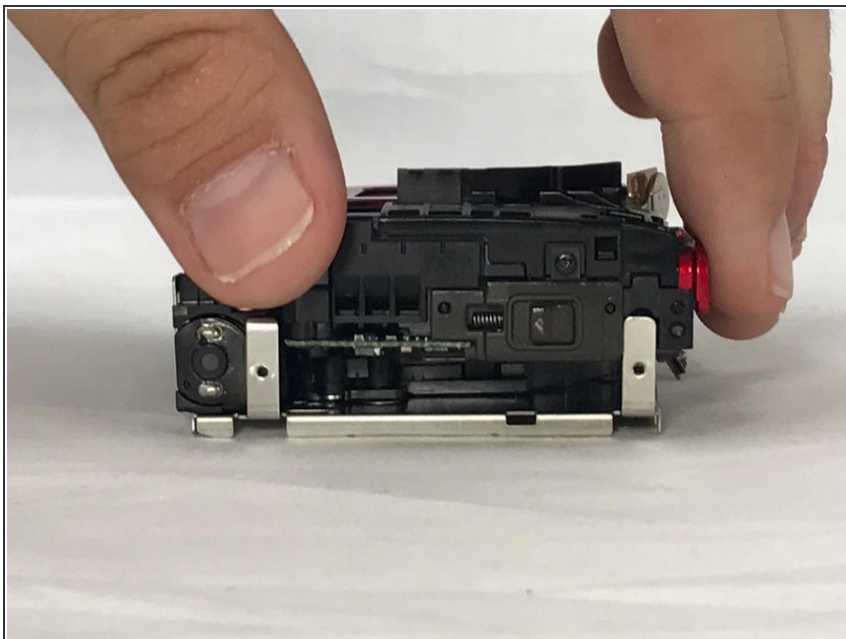
- Unplug the assembly from its flat-top connection.

## Step 16



- Use a #000 Phillips screwdriver to remove the three 4mm screws that hold the assembly to the frame.

## Step 17



- Gently lift the assembly out of its place.

Fix your Canon's flash in order to take bright, vibrant photographs.