



Dell Inspiron 17-5755 Display Panel Replacement

This guide will instruct you on how to replace the display panel for the Dell Inspiron 17-5755.

Written By: Jeff



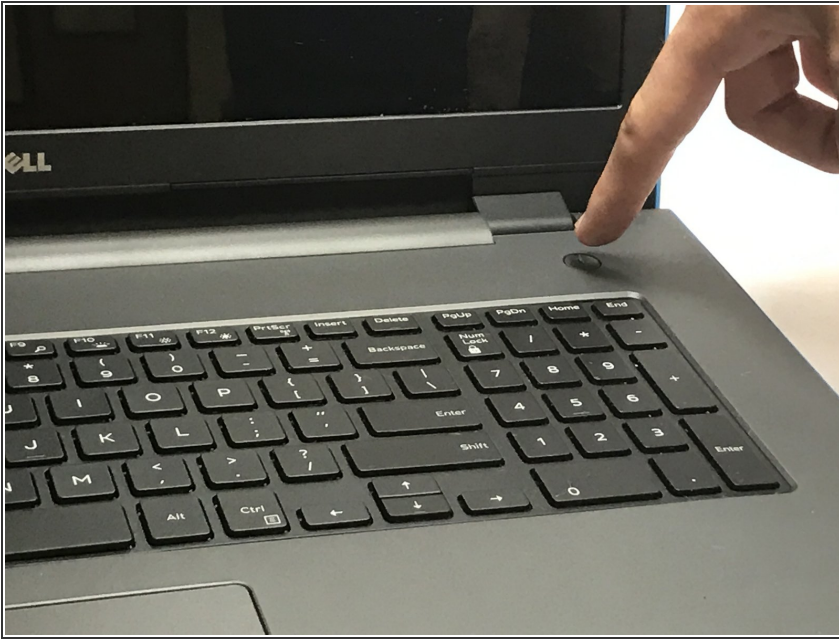
INTRODUCTION


This guide will allow you to replace a broken display panel for the Dell Inspiron 17-5755. Please ensure that the battery is removed before performing this replacement.

TOOLS:

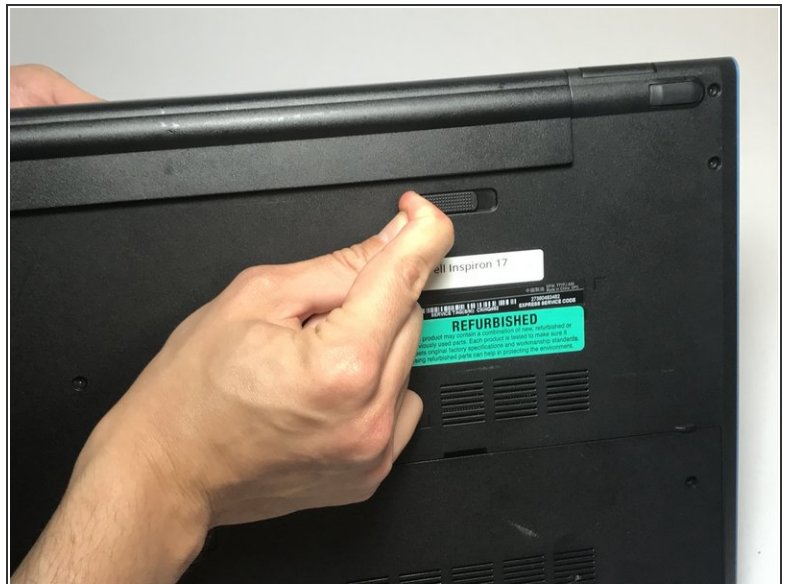
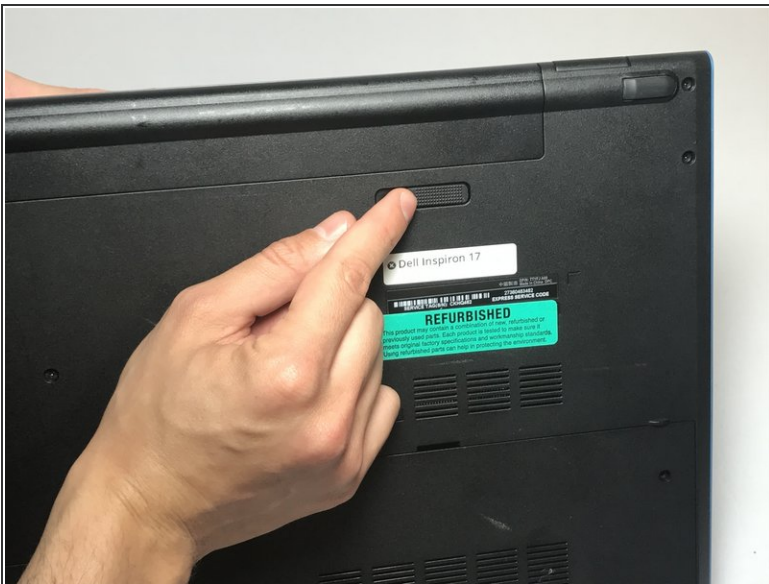
- [iFixit Opening Tools](#) (1)
 - [Phillips #0 Screwdriver](#) (1)
-

Step 1 — Battery



 Make sure the computer has been shut down, and isn't plugged into an outlet before attempting to remove the battery.

Step 2



- Find the battery release latch on the bottom side of the computer.
- Slide the latch to the left until you hear a "click". This indicates that the battery has been released.

Step 3



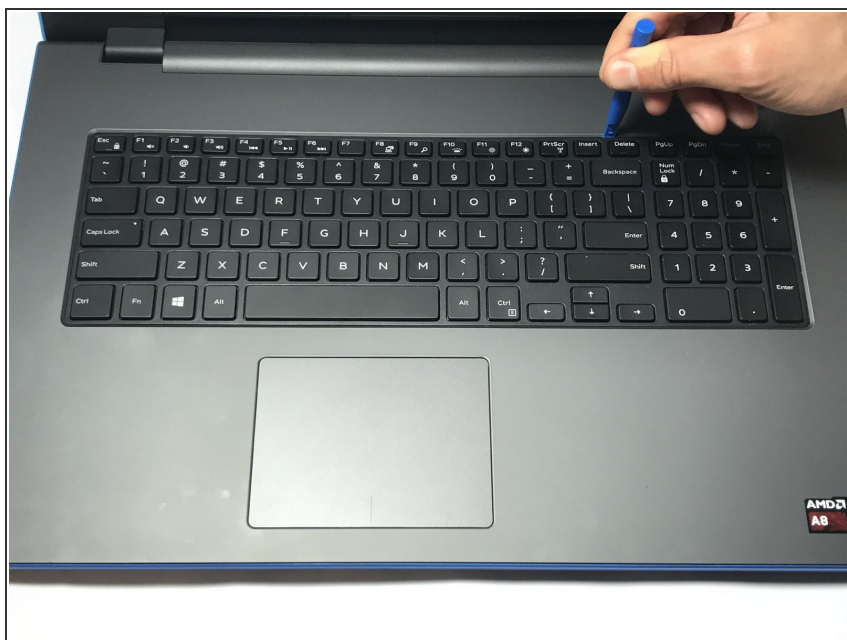
- Safely remove the battery from the laptop.

Step 4 — Keyboard



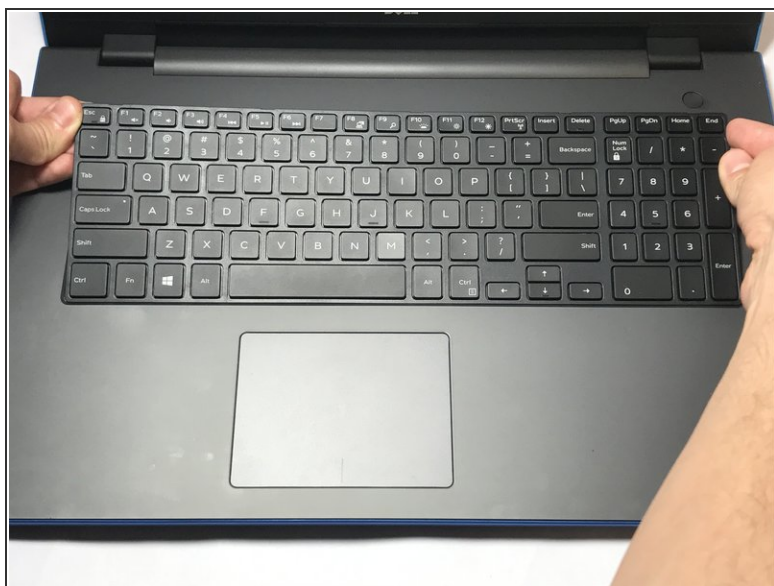
- Open the display of the laptop as far as possible, and locate the tabs which secure the keyboard to the laptop.

Step 5



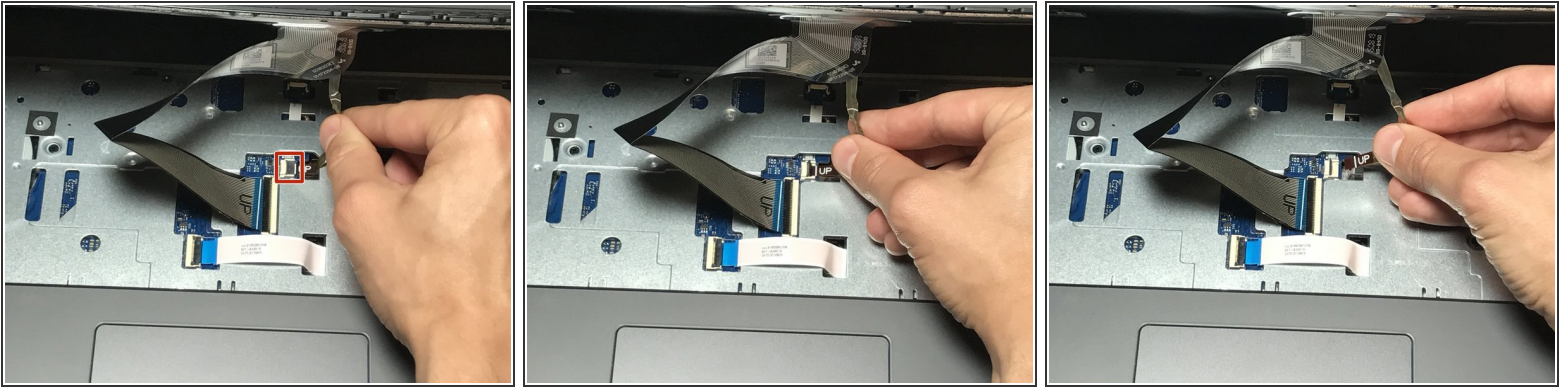
- Use a plastic opening tool to gently release the tabs that secure the keyboard to the laptop.

Step 6



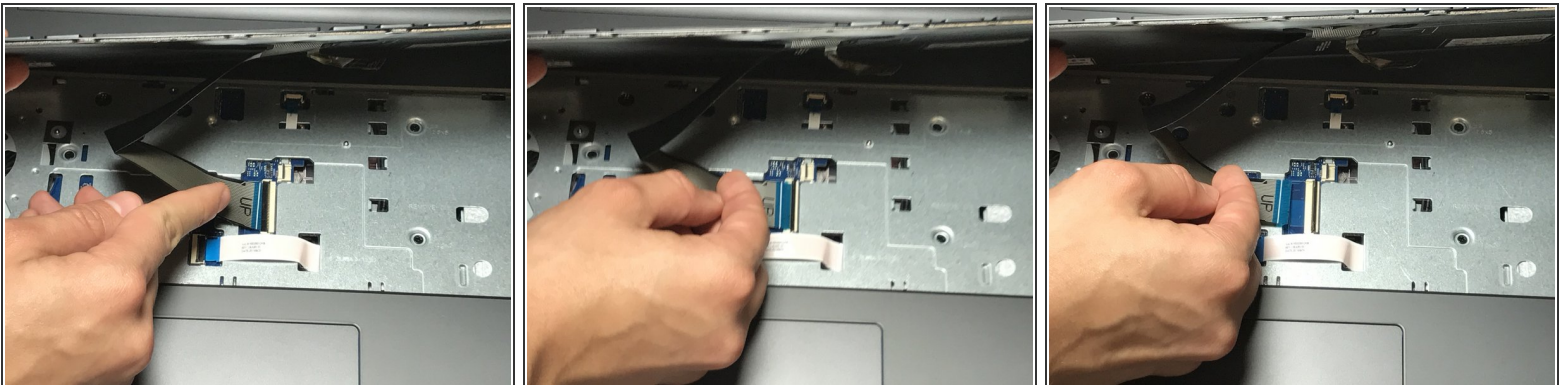
- Carefully lift the keyboard from the laptop, being mindful of any attachments that it may have.

Step 7



- Lift the zero insertion force (ZIF) tab that secures the keyboard back light ribbon cable
- Afterwards, carefully detach the backlight cable from the laptop.

Step 8



- Gently release the ZIF tab that secures the keyboard ribbon cable to the laptop.
- Afterwards, carefully slide the cable out of its slot.

Step 9



- Now that the keyboard is detached from the laptop, you may safely remove it.

Step 10 — Motherboard



- Use a Phillips #0 screwdriver to unscrew the two 8mm screws which secure the base cover.

Step 11



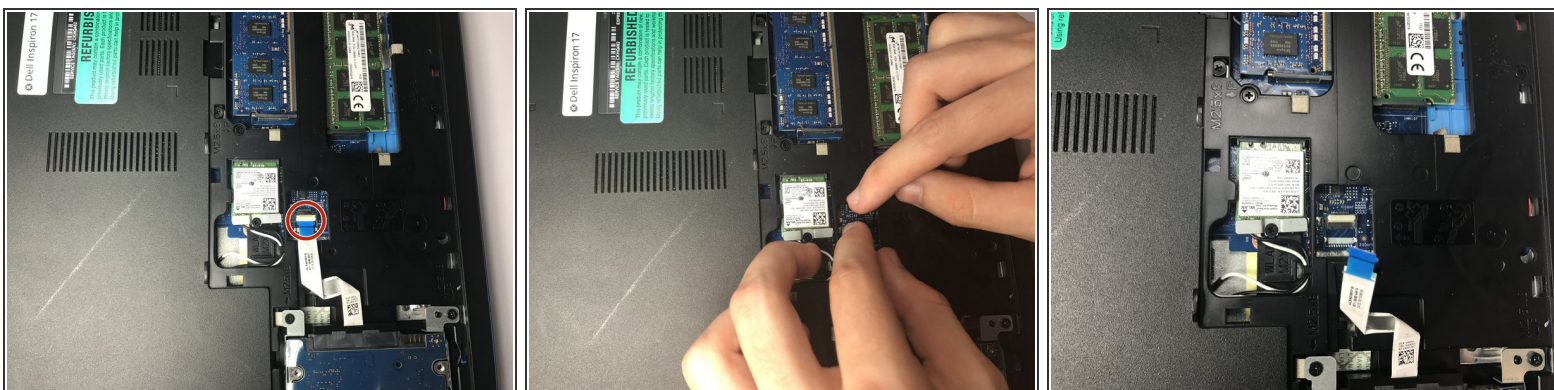
- Locate the tabs that hold the base cover to the laptop and use a plastic opening tool to gently release the base cover.

Step 12



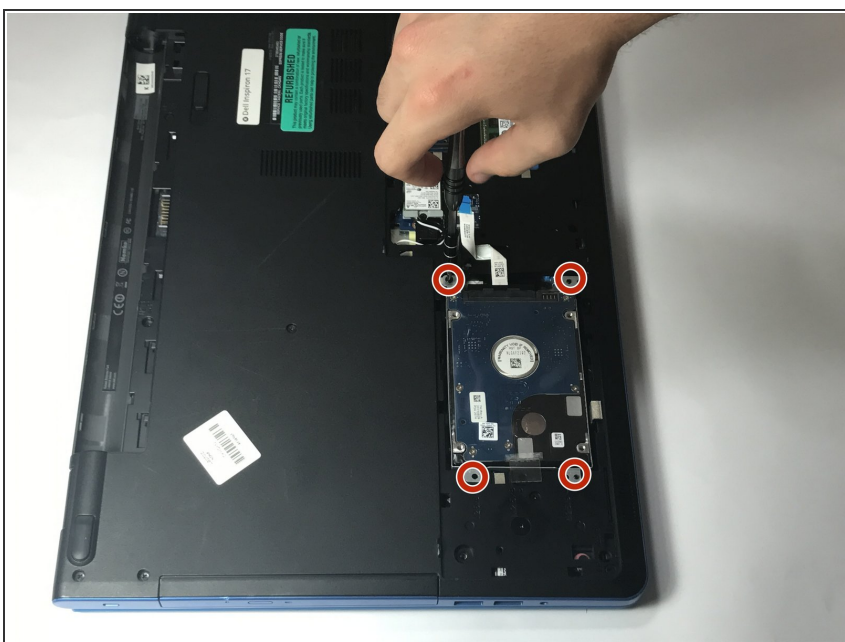
- Now with the base cover removed, you may lift it off of the laptop and continue.

Step 13



- Disconnect the hard drive ribbon cable from the laptop by lifting the latch which secures it.

Step 14



- Use a Phillips #0 screwdriver to remove the four 8mm screws which secure the hard drive assembly to the laptop.

Step 15



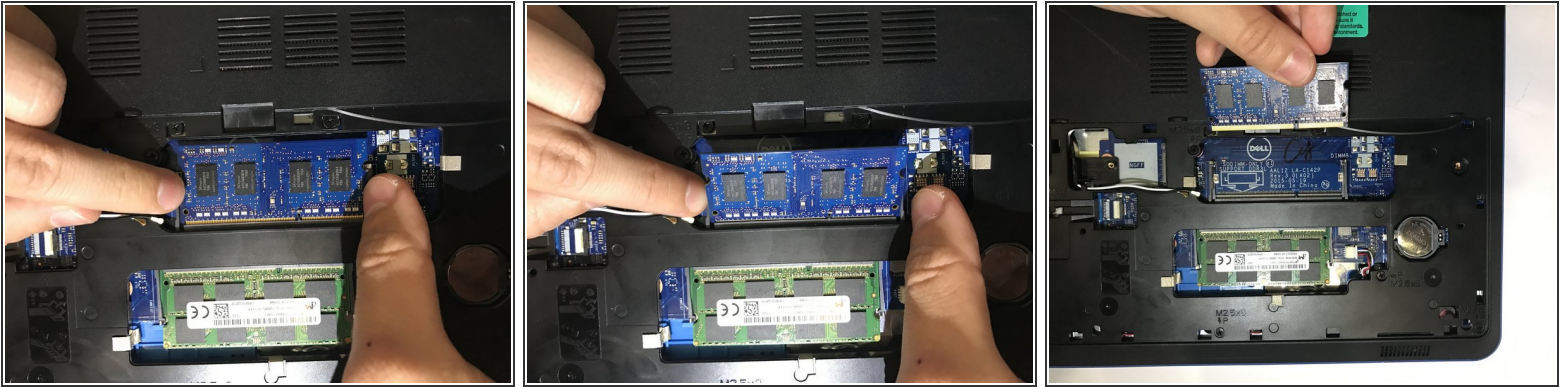
- Carefully remove the hard drive and its assembly from the laptop.

Step 16



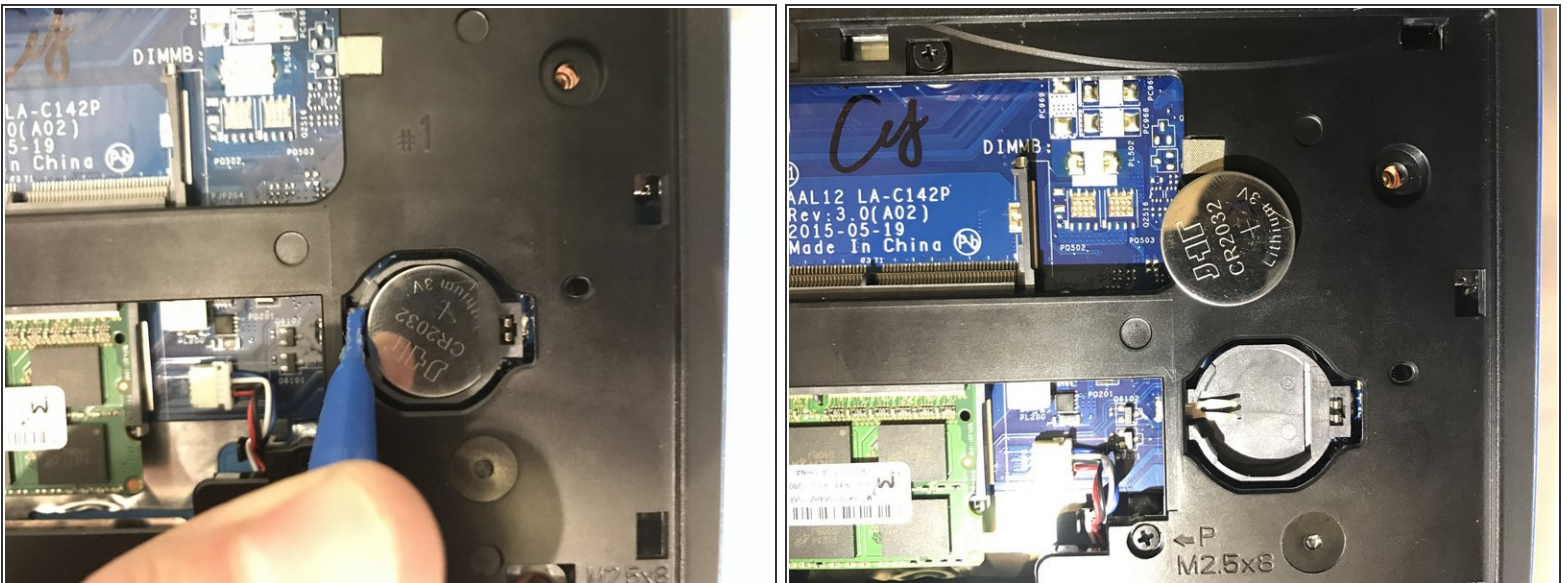
- Remove the 3mm screw which secures the wireless card bracket.
- After removing the screw, remove the wireless card bracket, along with the antenna cables secured to the wireless card.
- Afterwards, you may slide and remove the wireless card from the motherboard.

Step 17



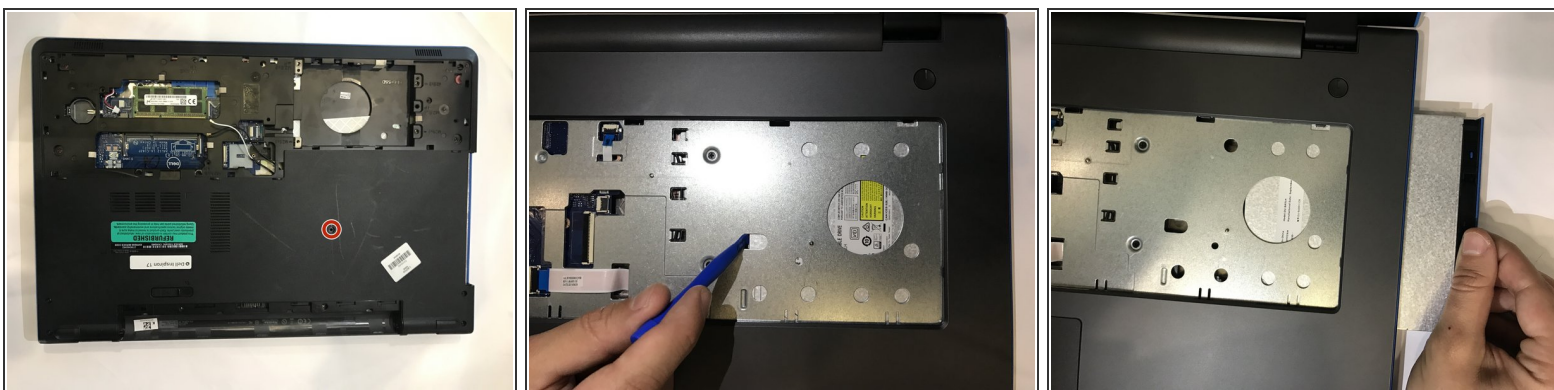
- Gently spread apart the securing clips on each end of the memory-module slot until the memory module pops out.
- Slide and remove the memory module afterwards.

Step 18



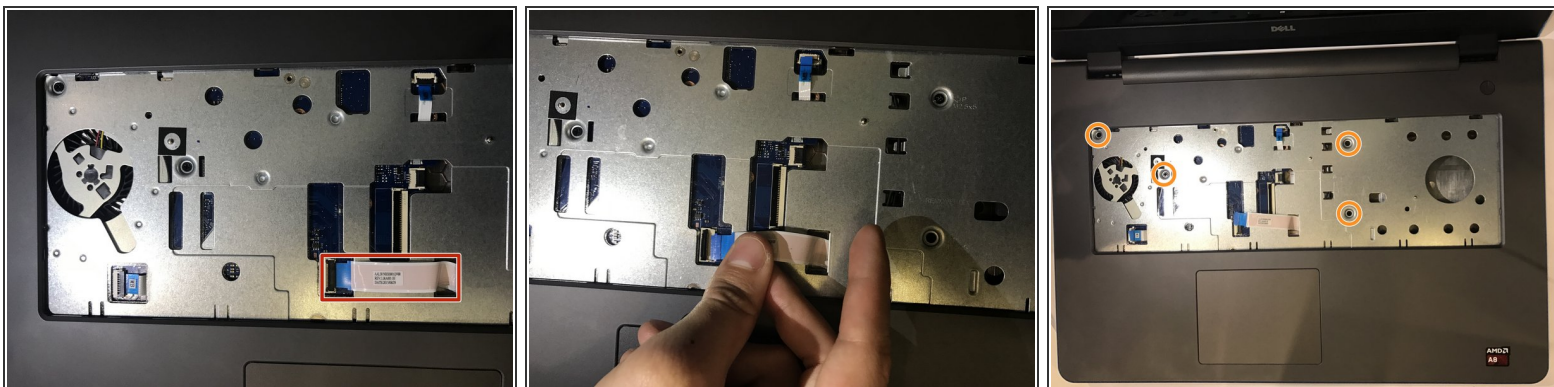
- Use a plastic opening tool to gently pry the CMOS battery found at the bottom right of the laptop out of the socket.

Step 19



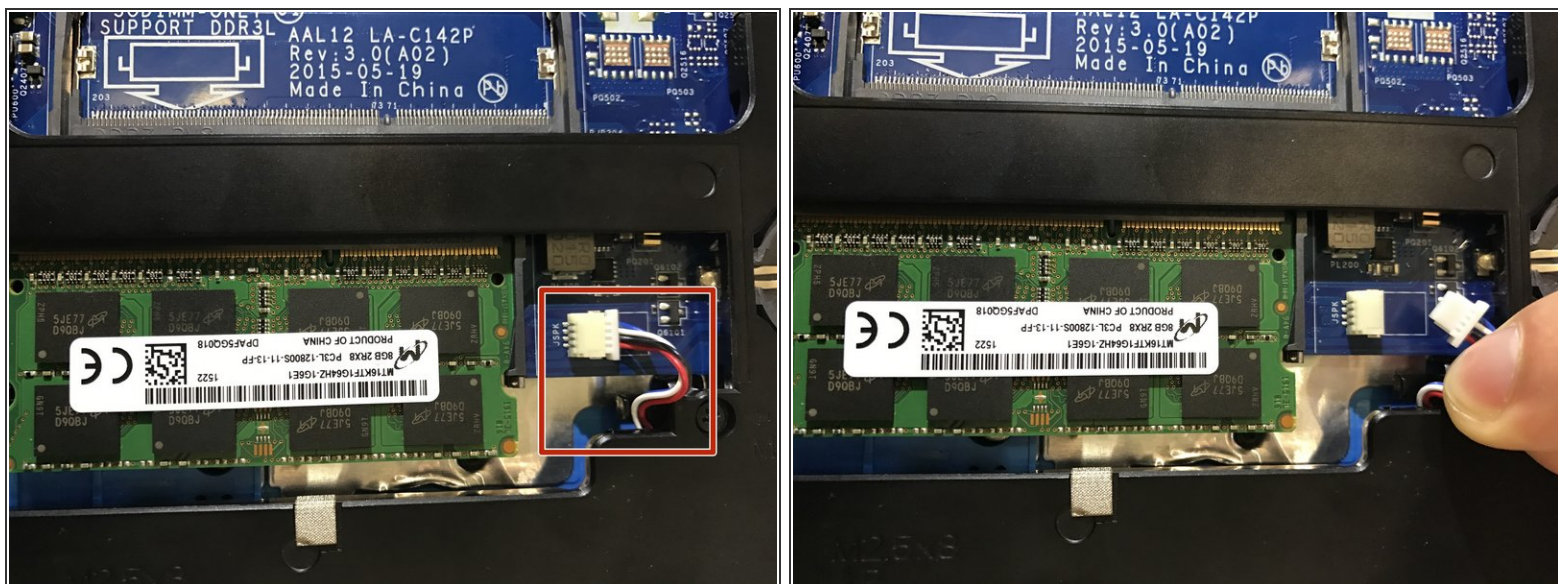
- Use a Phillips #0 screwdriver to remove the 3mm screw which secures the optical-drive assembly to the computer base
- Turn the computer over and using a plastic opening tool, push the optical-drive assembly out of the optical drive bay.
- Afterwards, safely pull the optical-drive assembly out of the optical-drive bay.

Step 20



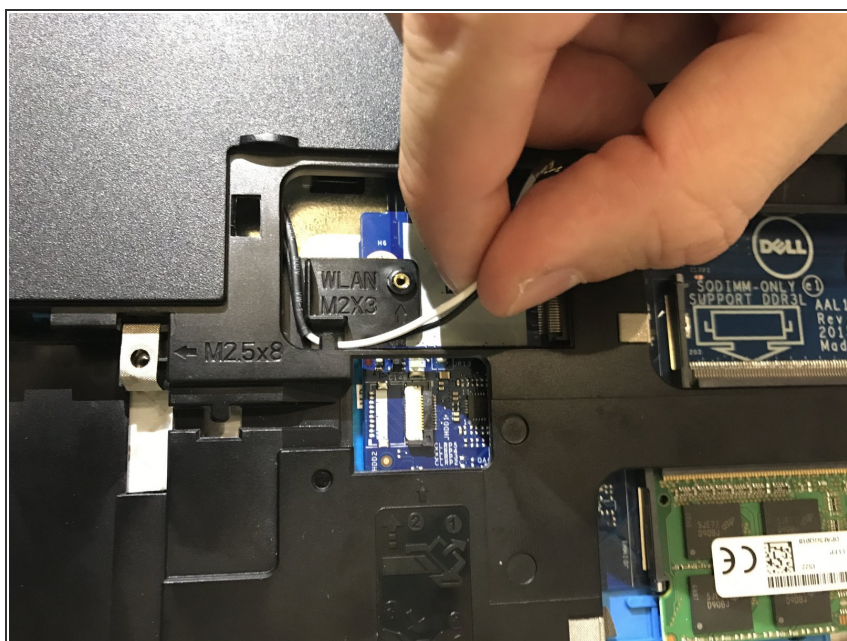
- Turn the computer over
- Lift the latch securing the optical drive ribbon cable, and disconnect it from the motherboard.
- Afterwards, use a Phillips #0 screwdriver to remove the four 5mm screws.

Step 21



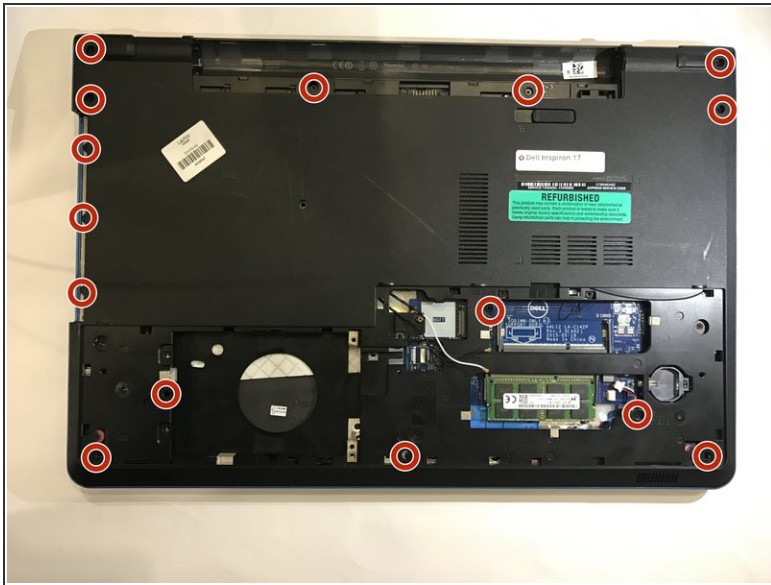
- Turn over the laptop, and safely disconnect the speaker cable.

Step 22



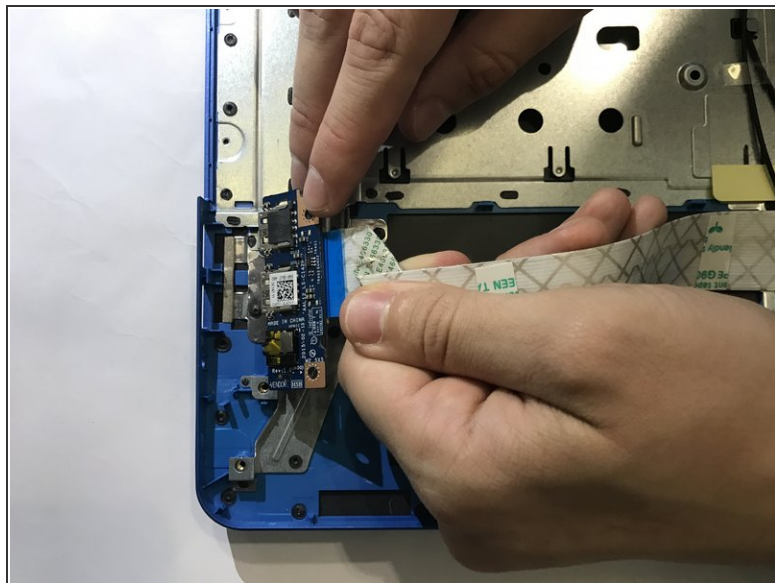
- Remove the antenna cables from the routing guides on the computer base.

Step 23



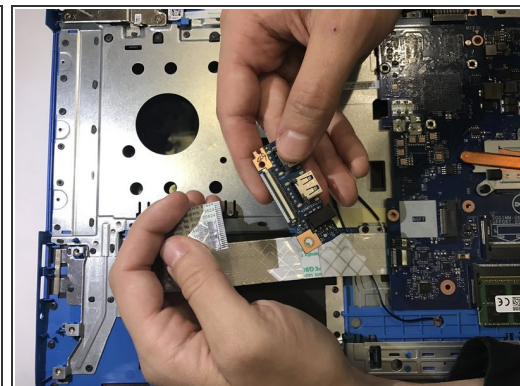
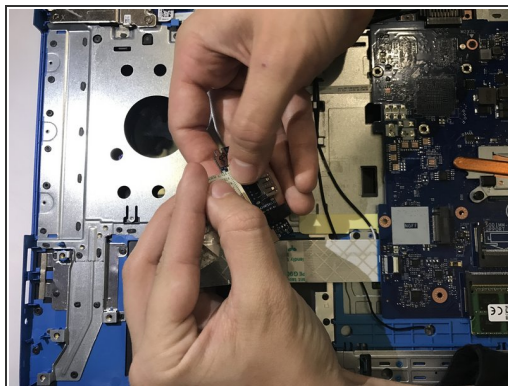
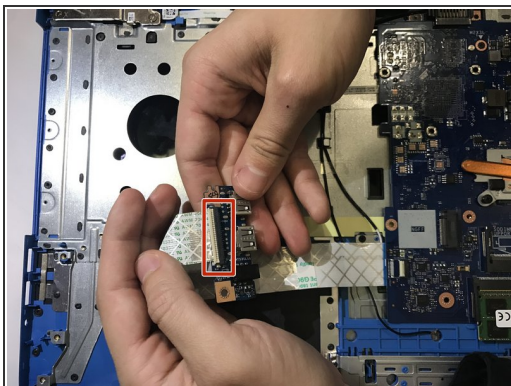
- Use a Phillips #0 screwdriver to remove the 15 screws that secure the computer base to the palm rest assembly.
- Afterwards, safely pry the computer base from the palm rest assembly using a plastic opening tool.
- ⓘ There are 3 different screws used: Three 2mm screws on the edge of the optical drive, two 3mm screws located where the battery was, and ten 8mm screws.

Step 24



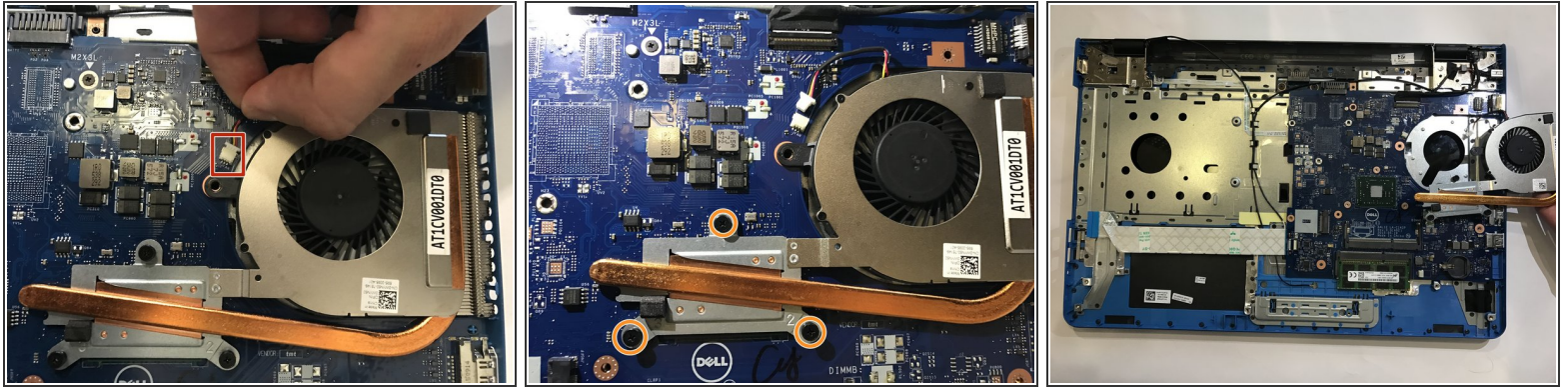
- Use a Phillips #0 screwdriver to remove the 5mm screw that secures the I/O board to the palm-rest assembly.

Step 25



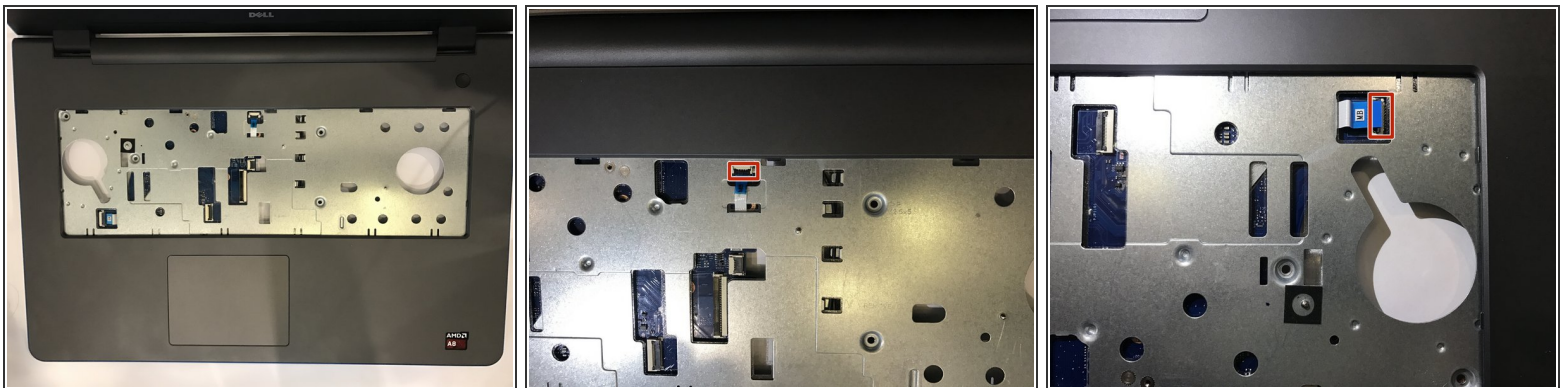
- Lift the I/O board and turn it over.
- Afterwards, lift the ZIF latch and disconnect the I/O-board cable from the I/O board.

Step 26



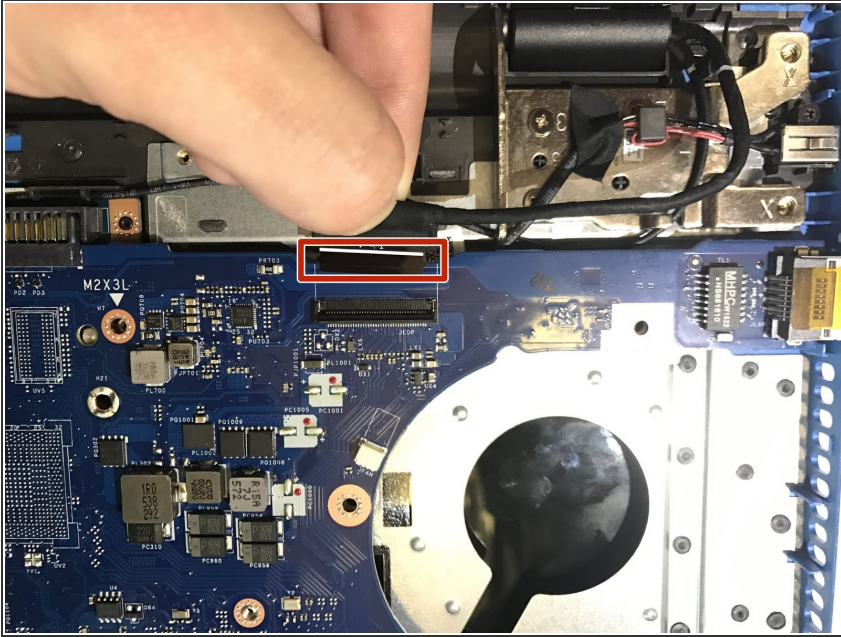
- Disconnect the fan cable from the motherboard.
- Use a Phillips #0 screwdriver to remove the heat-sink screws in sequential order, as indicated by the numbers on the heat-sink assembly.
- Afterwards lift the heat-sink assembly off the motherboard.

Step 27



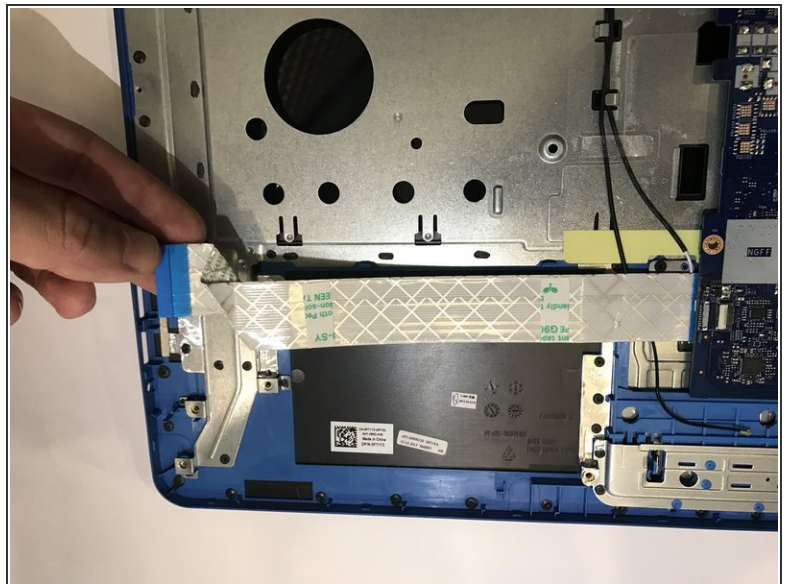
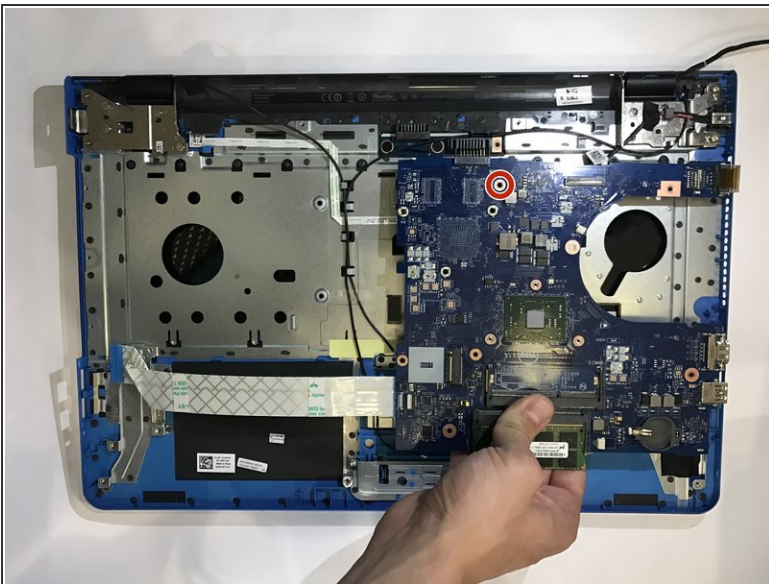
- Turn the computer over and open the display as far as possible.
- Lift the latches for the power button board cable and disconnect it along with the touchpad cable from the motherboard.

Step 28



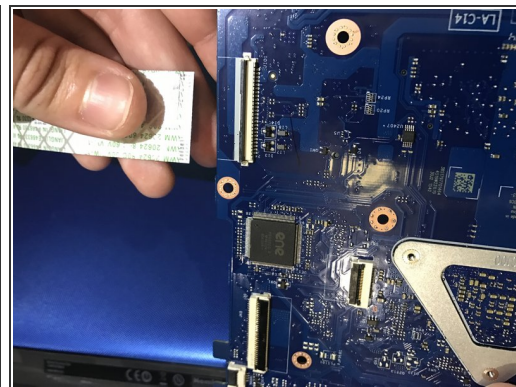
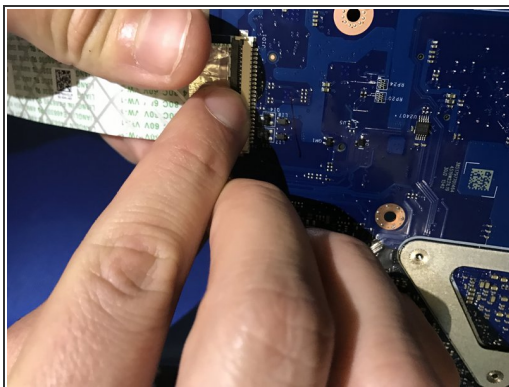
- Close the display and turn the computer over.
- Proceed to lift the latch which secures the ZIF display cable to the motherboard.
- Disconnect the display cable from the motherboard.

Step 29



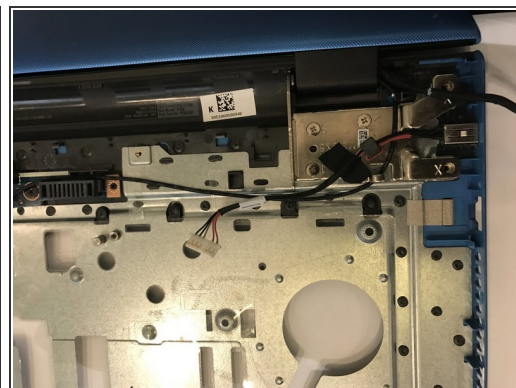
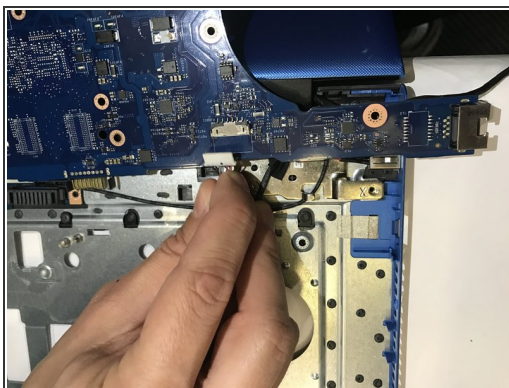
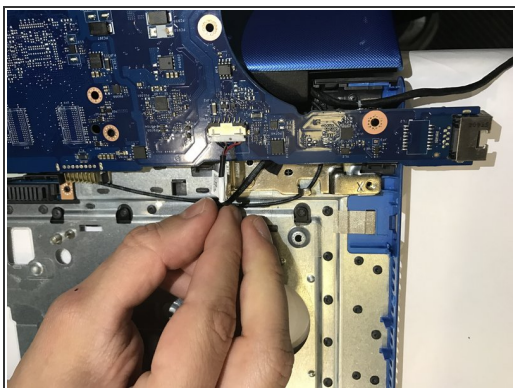
- Use a Phillips# 0 screwdriver to remove the 3mm screw that secures the motherboard to the palm-rest assembly.
- Afterwards, carefully peel the I/O board cable off the palm-rest assembly.

Step 30



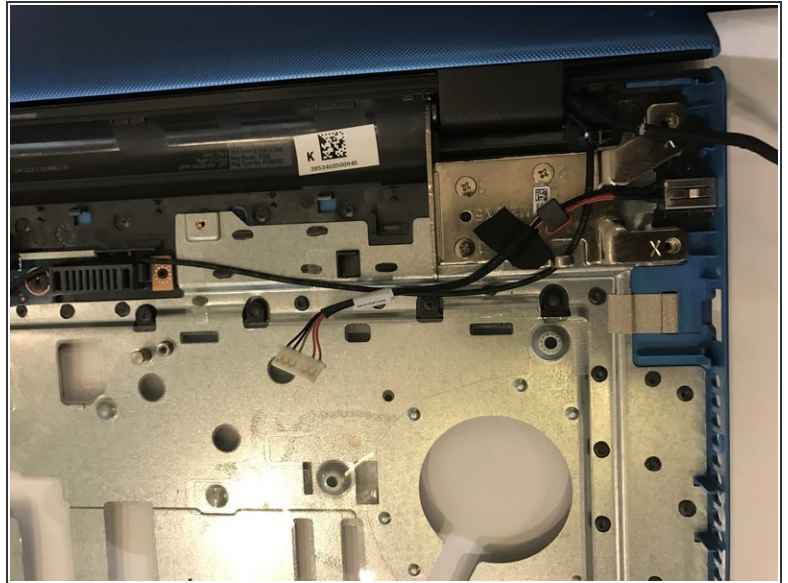
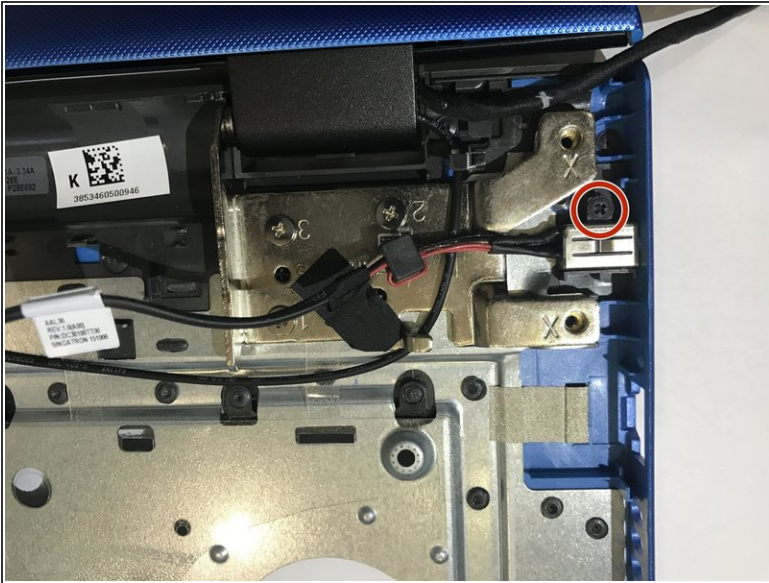
- Turn the motherboard over.
- Lift the latch to disconnect the I/O-board cable from the motherboard.

Step 31



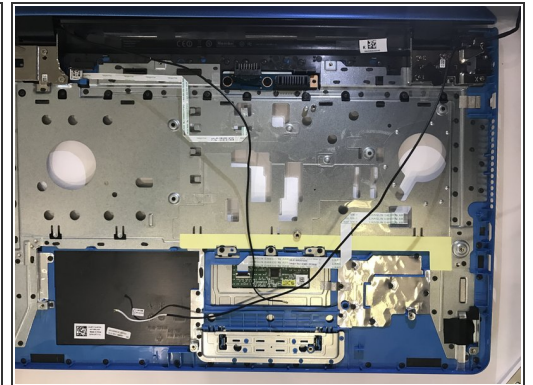
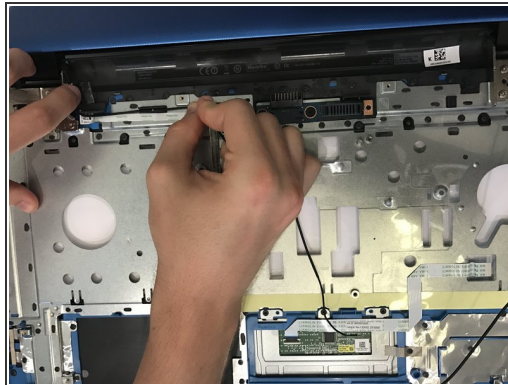
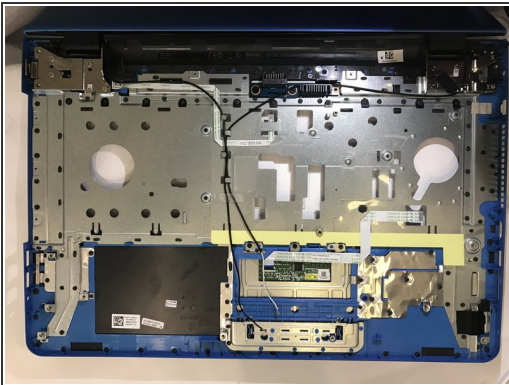
- Disconnect the power-adapter port cable from the motherboard.
- Afterwards you may safely remove the motherboard from the laptop.

Step 32 — Display Panel



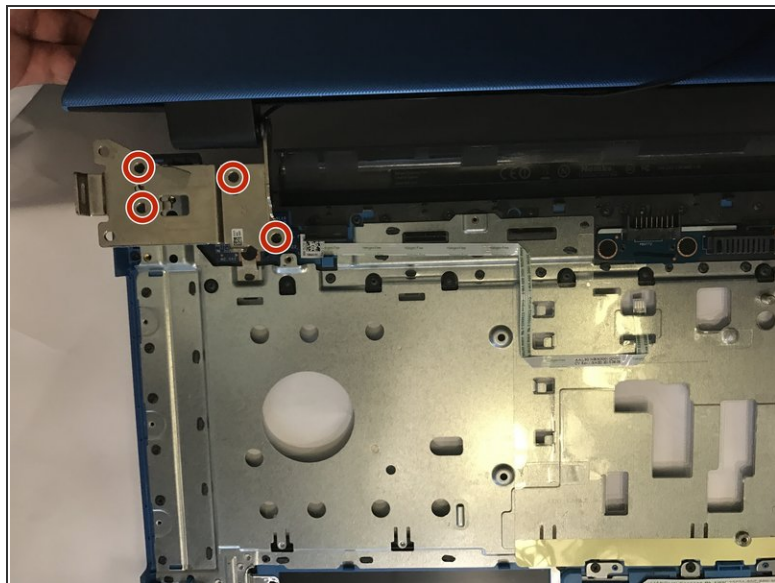
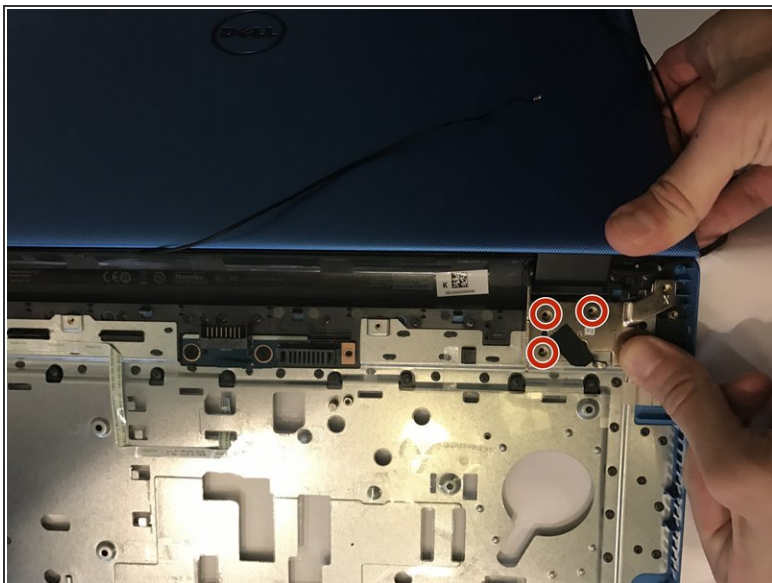
- Using a Phillips 0 screwdriver, remove the screw (M2 x 3) the power-adaptor port to the palm-rest assembly.
- Peel off the tape that secures the power-adaptor port to the palm-rest assembly.

Step 33



- Carefully detach the antenna cables from their respective routing guides

Step 34



- Using a Phillips 0 screwdriver, remove the 7 screws (M2.5 x 5) that secure the display hinges to the palm-rest assembly.
- Detach the display assembly from the palm rest assembly

Step 35



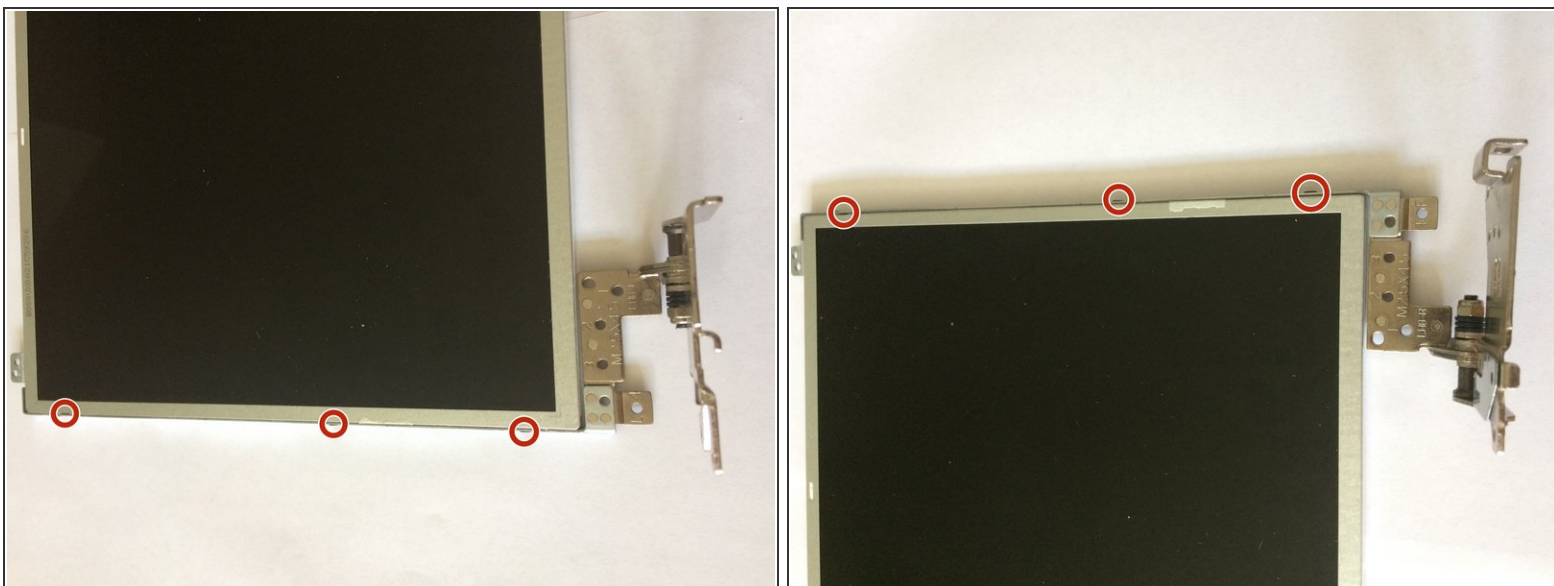
- Using the tip of your fingers, gently pry off the display bezel from the back-cover

Step 36



- Using a Phillips 0 screwdriver, remove the 10 screws (M2.5 x 4.5) that secure the display panel to the display back-cover.

Step 37



- Using a Phillips 0 screwdriver, remove the 6 screws (M2 x 3) that secure the display hinges to the display panel.

Step 38



- Carefully turn the display assembly around.
- Gently peel the display cable and disconnect the latch that is found under it.

Step 39



- Once the display hinges are removed, your display panel is now ready to be replaced.

To reassemble your device, follow these instructions in reverse order.