



# LG Lucid 4G SIM Card Replacement

This guide will teach you how to remove and replace the SIM card of your LG Lucid 4G phone.

Written By: Margaret Huck



---

## INTRODUCTION

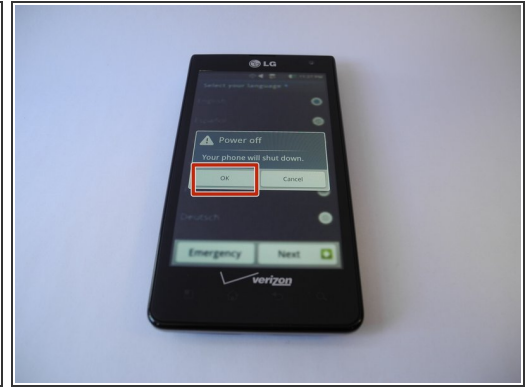
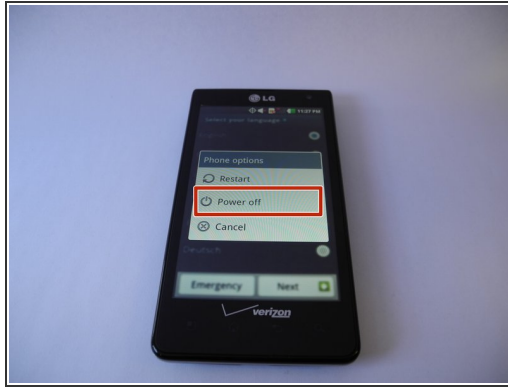
In order to remove the SIM card, you need to remove the battery of this phone first. This guide will help you do so safely and effectively.



### TOOLS:

- [iFixit Opening Tools](#) (1)
-

## Step 1 — Battery



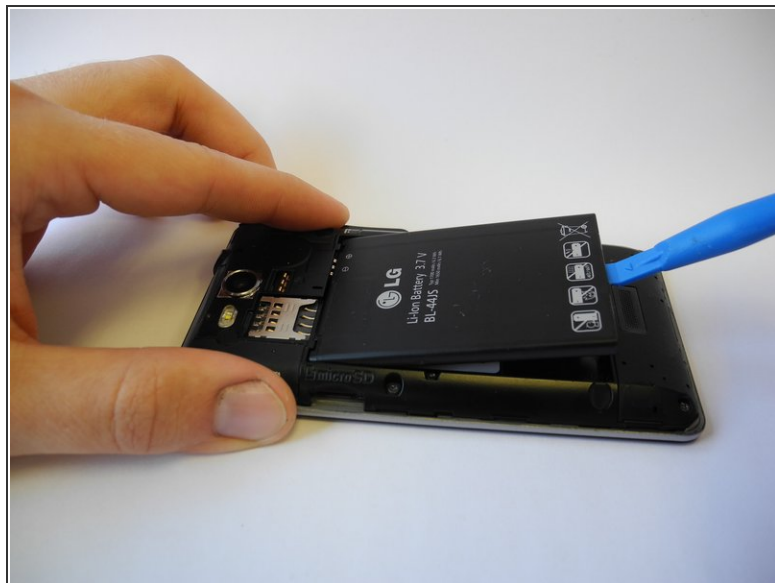
- Turn off the phone by pressing the power button, then press "Power Off", then press "OK" when notified that your phone will shut down.

## Step 2



- Flip the phone so that its back plate is facing upward.
- Use your fingernail or prying tool to lift the back plate of the phone open by using the notch at the bottom.

## Step 3



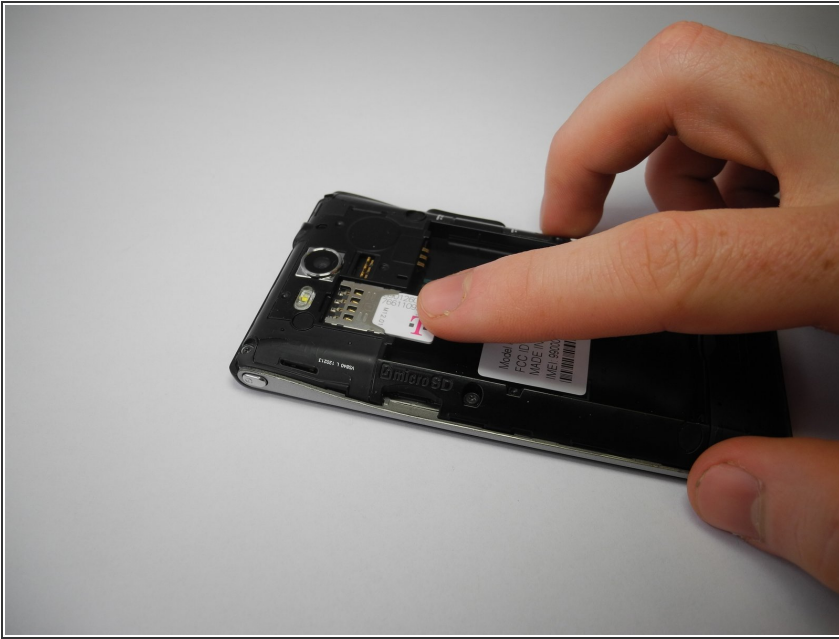
- Using the notch located near the bottom center, remove the battery with a prying tool or your fingernail.

## Step 4 — SIM Card



- After you have cleaned the battery area, locate the SIM card slot.

## Step 5



- Using your finger, carefully remove the SIM card from its slot by moving it toward the battery area.

To reassemble your device, follow these instructions in reverse order.