



# iHome iM71SC Base LED Replacement

Replace the LED bulb at the base of the iHome iM71SC portable speaker.

Written By: Sarah Brown



---

# INTRODUCTION

This guide will walk you through replacing the LED at the bottom of the speaker.

---



## TOOLS:

- [Phillips #000 Screwdriver](#) (1)
  - [Soldering Iron](#) (1)
-

## Step 1 — iHome iM71SC Disassembly



- Push down and turn the top of the speaker clockwise. This will release the clips and expand the speaker.

## Step 2



- Use a #000 Phillips screwdriver to remove the four 1 mm screws from the bottom half of the speaker.

### Step 3



- Flip the speaker over and use a #000 Phillips screwdriver to remove three 1mm screws . Unscrew these to unfasten the top.

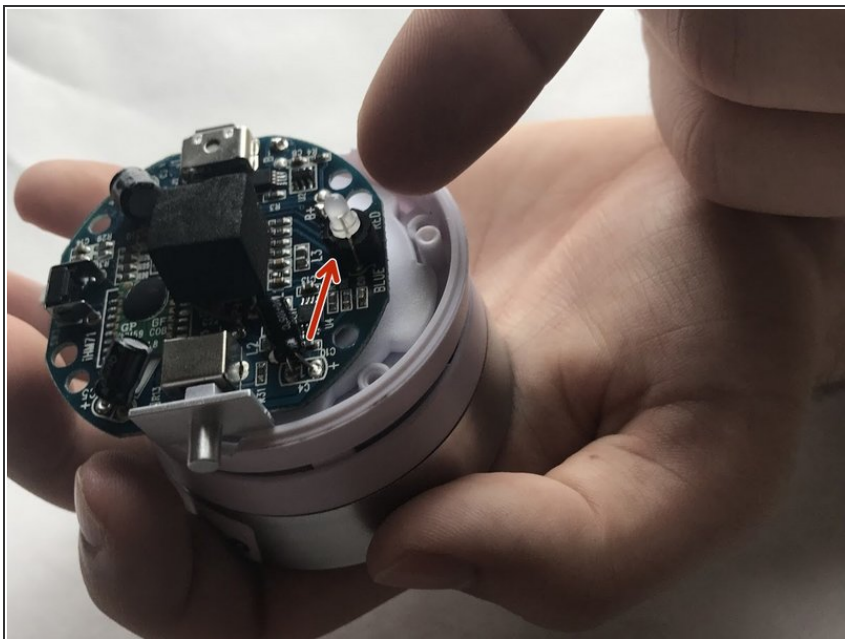
### Step 4



- Remove the now unfastened coverings to expose the internals of the speaker.

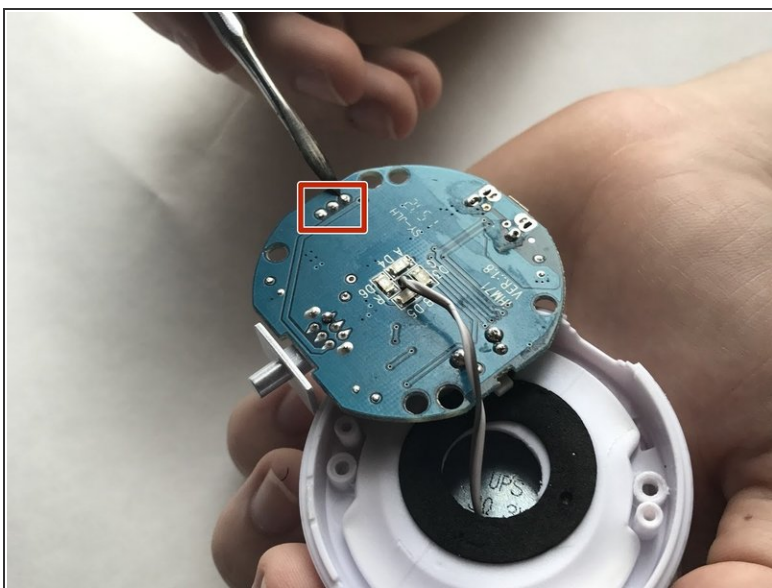


## Step 5 — Base LED



- Locate the LED on the circuit board.

## Step 6



- Desolder the three connections to the old LED to remove it from the board.
- i Check out [this awesome guide](#) for soldering & desoldering instructions.

To reassemble your device, follow Steps 1-4 in reverse order.