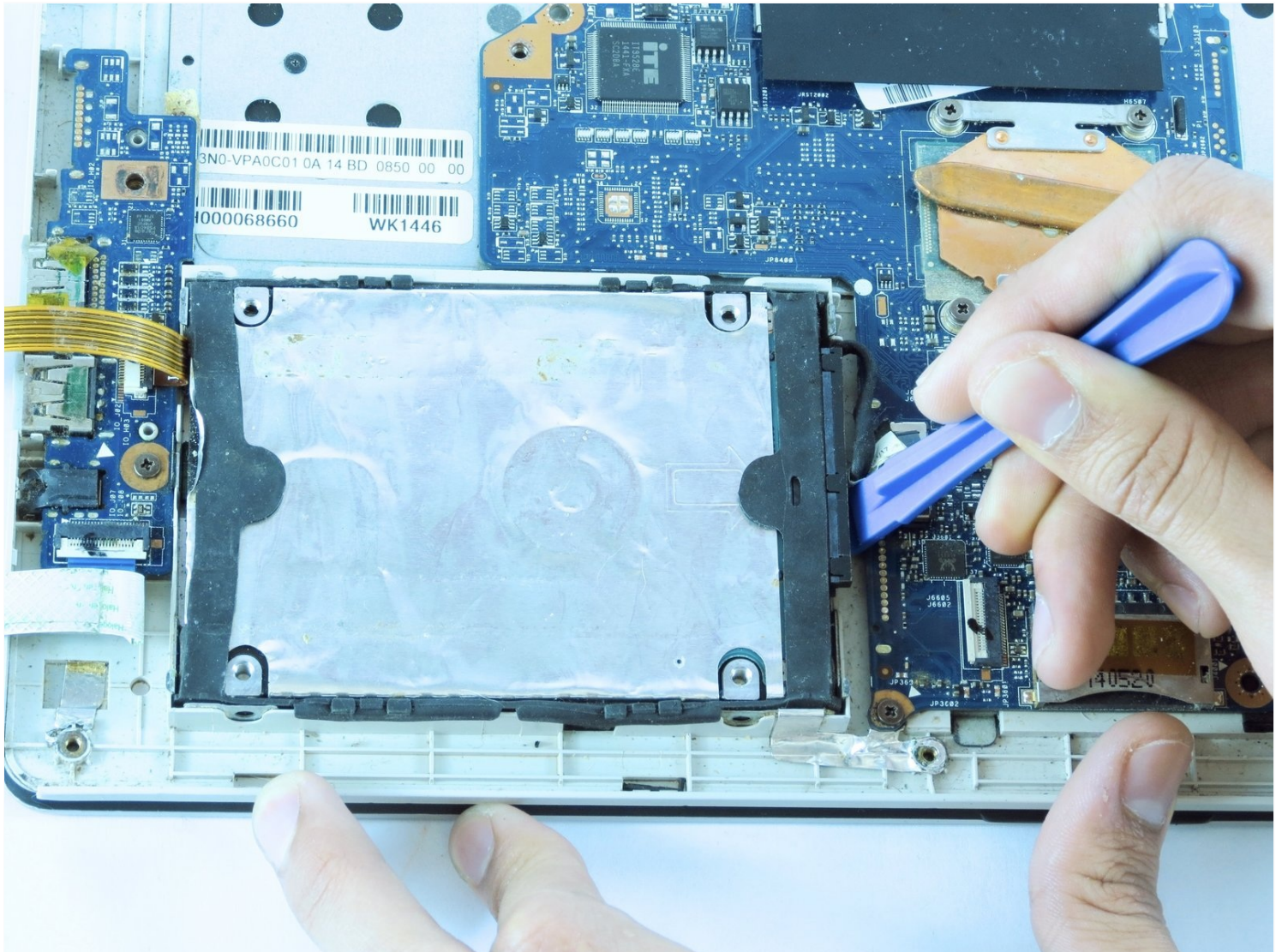




# Toshiba Satellite E45t-B4300 Hard Drive Replacement

Use this guide to replace the hard drive in a...

Written By: Joshua Swanson



# INTRODUCTION

Use this guide to replace the hard drive in a Toshiba Satellite E45t-B4300.

## TOOLS:

Phillips #0 Screwdriver (1)

Spudger (1)

iFixit Opening Tool (1)

## Step 1 — Battery



 Power off your laptop before continuing.

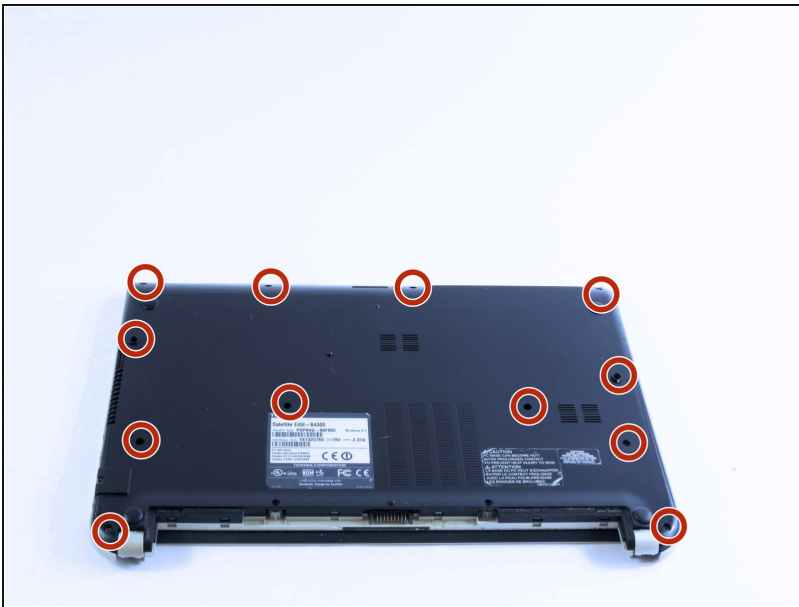
- Remove the following two 4mm screws with a Phillips #0 screwdriver.

## Step 2



- Slide the battery out towards you.

## Step 3 — Bottom Case



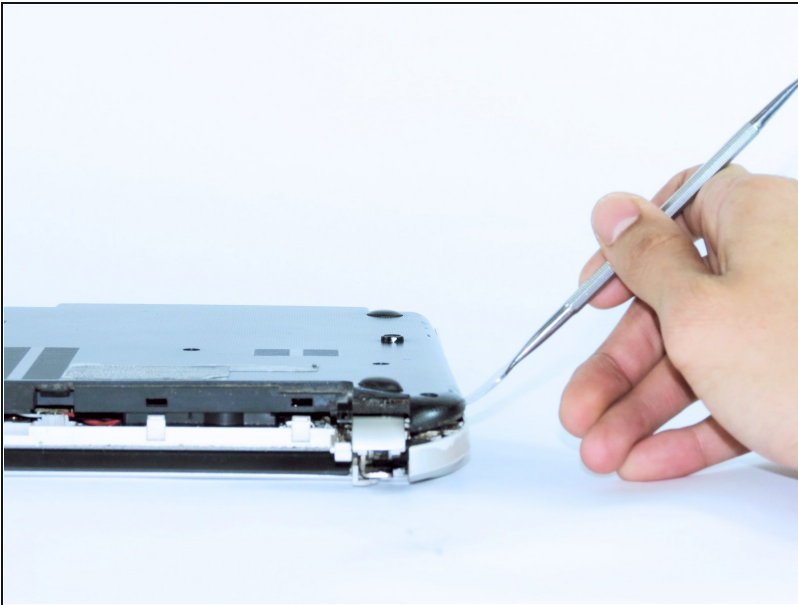
- Remove the following twelve 4mm screws with a Phillips #0 screwdriver.

## Step 4



- Use a spudger to depress the six white clips connecting the plastic cover

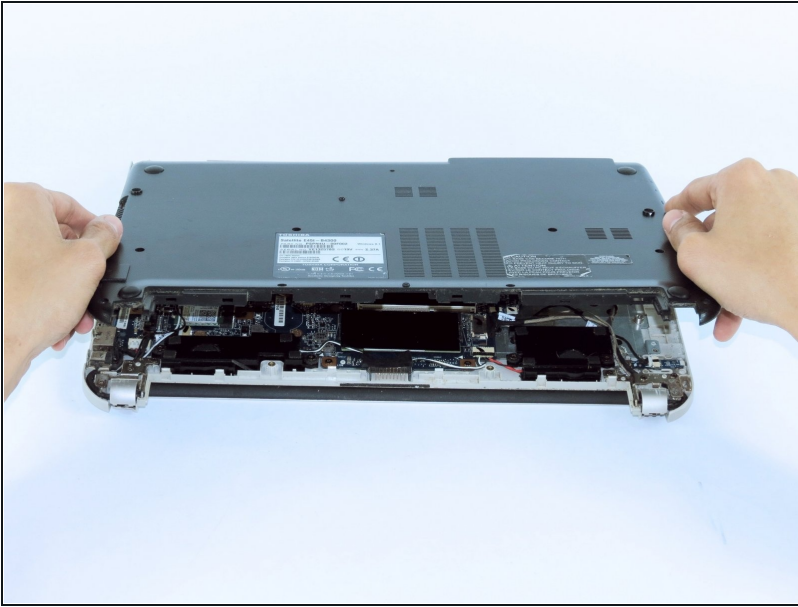
## Step 5



- Run the spudger or a [plastic card](#) around the entire laptop to release the rest of the clips.

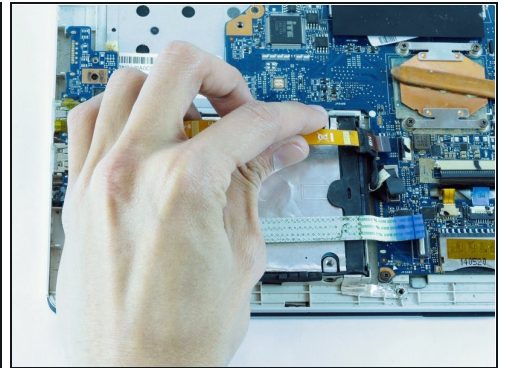
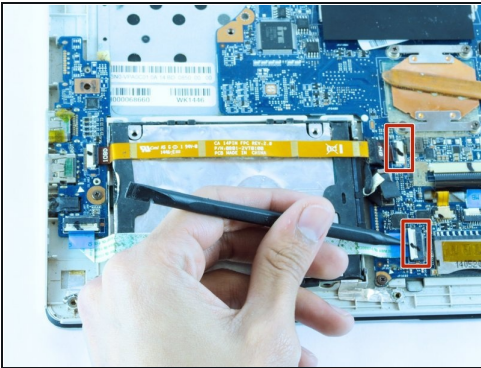


## Step 6



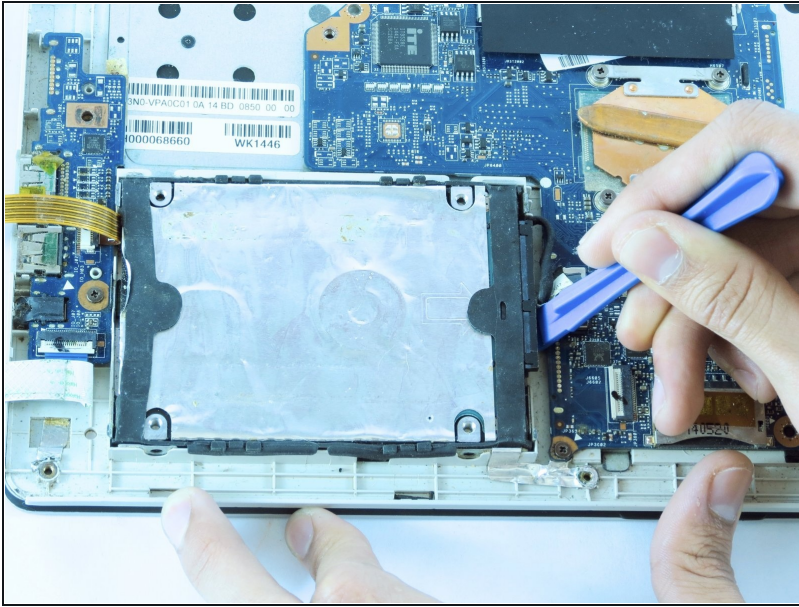
- Remove the cover and set to the side.

## Step 7 — Hard Drive



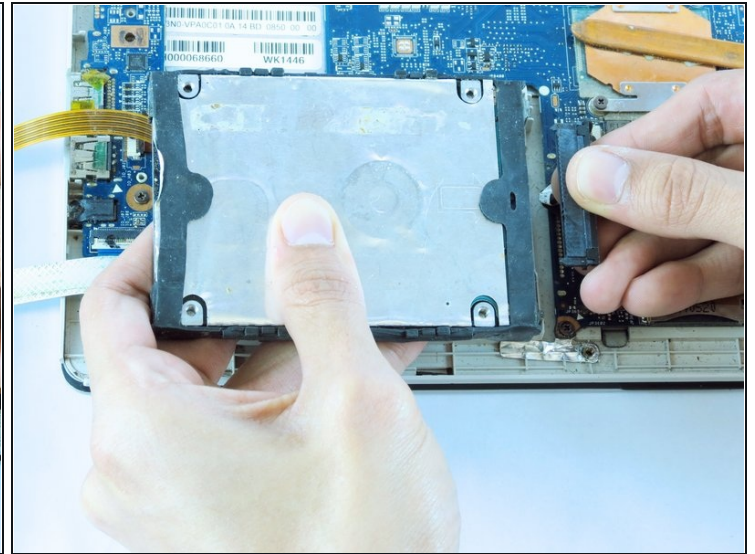
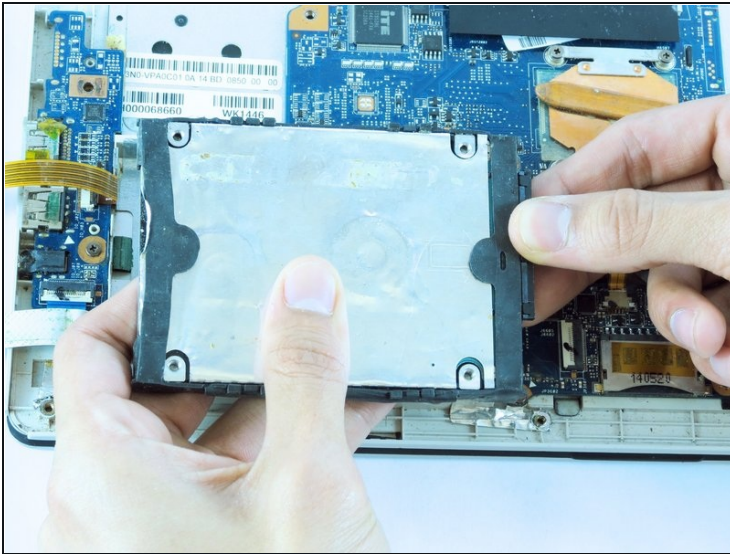
- Use the point end of the spudger to lift the the clips that attach the two ribbons to the motherboard.
- Pull out the ribbons from the motherboard.

## Step 8



- Use an opening tool or your fingers to lift the hard drive out of the laptop.

## Step 9



- Unplug the hard drive from the motherboard.

To reassemble your device, follow these instructions in reverse order.