



Asus X401A Wireless Card Replacement

Through this guide, you will be able to replace the laptop's Wireless Card, which allows the use of Wireless Internet (Wi-Fi) and Bluetooth functions.

Written By: Connor Santee





TOOLS:

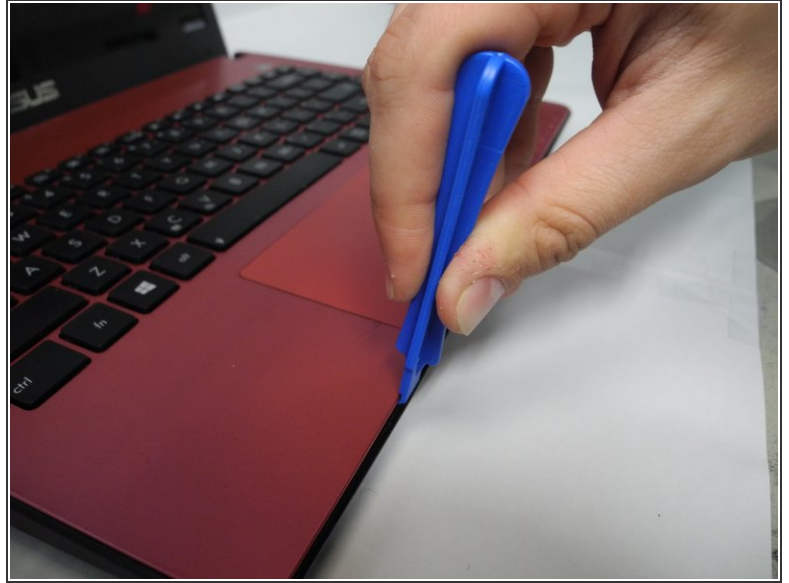
- [iFixit Opening Tools](#) (1)
- [Spudger](#) (1)
- [Phillips Head Screwdriver: Size PH1](#) (1)

Step 1 — Wireless Card



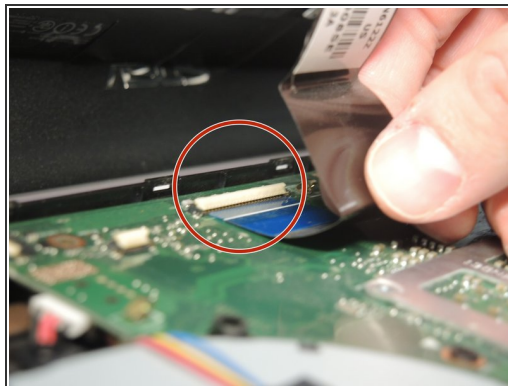
- Use a Phillips head #1 screwdriver to remove the eight 3mm screws.
- Use a Phillips head #1 screwdriver to remove the two 4mm screws.

Step 2



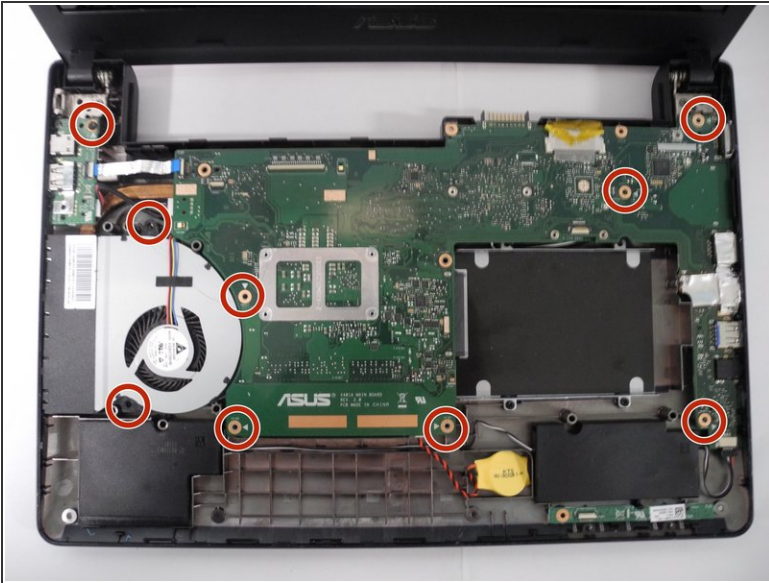
- After removing the screws from the underside, flip the laptop over and, using a plastic opening tool, remove the keyboard panel
- ❗ To efficiently remove the keyboard panel, use the opening tool in a prying motion
- ☑ When reattaching the keyboard panel, press firmly until snaps are heard, indicating the panel has been reattached.

Step 3



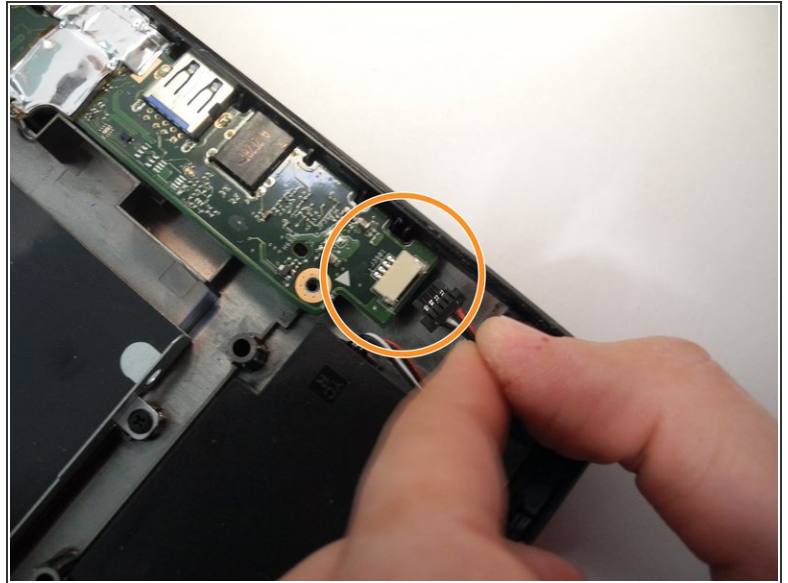
- Disconnect these cables by unlocking the ZIF connectors with a spudger.

Step 4



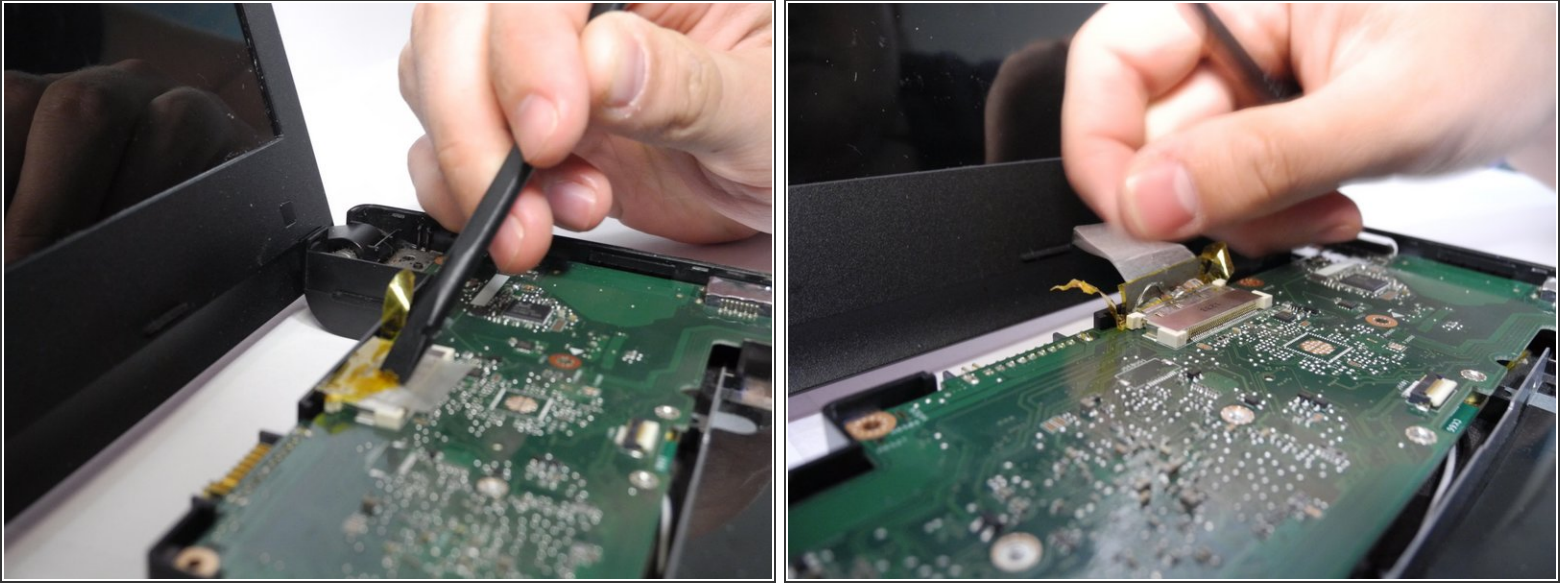
- Using a Phillips Head 1 Screwdriver, remove all screws securing the motherboard to the frame of the laptop

Step 5



- Use a spudger to lift up on the ZIF tab and remove the USB/charging port ribbon cable.
- Use a spudger to release the speaker's bundled cable from the connector.
- ⓘ After disconnecting the USB/Charging port board completely, remove and set aside, as it would otherwise obstruct future steps.

Step 6



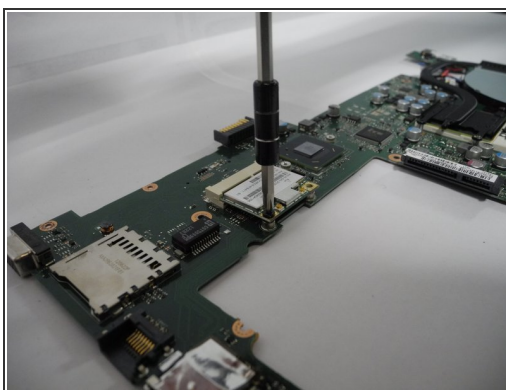
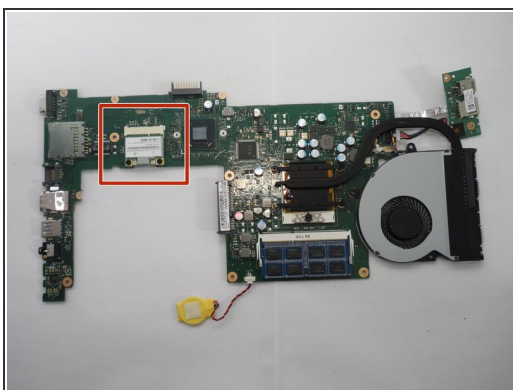
- Peel back the tape securing the cable for the laptop's screen. It is not recommended you disconnect the cable at this time, as you risk damaging the cable.

Step 7




- Using the plastic spudger tool, lift up the fan from the frame of the laptop using a prying motion, which will also lift the motherboard
- ⓘ As you remove the motherboard, pull it towards the left to allow the ports on the opposite side to slide out easily from their slots.
- As you lift the motherboard, disconnect the video cable mentioned in the previous step.

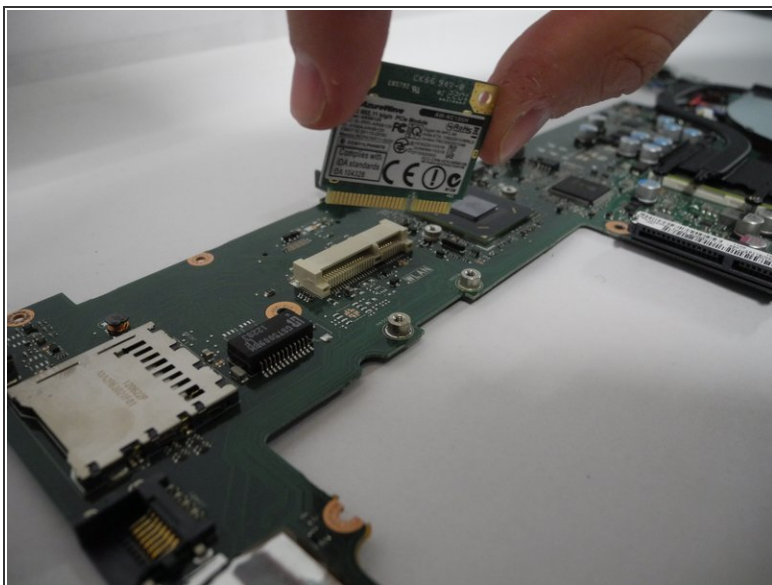
Step 8



- Identify the wireless card on the underside of the motherboard and remove the 2 screws holding it in place

 As you remove the second screw, the wireless card will spring up on its own

Step 9



- Remove the wireless card along its angle, and insert your replacement card at the same angle.

To reassemble your device, follow these instructions in reverse order.