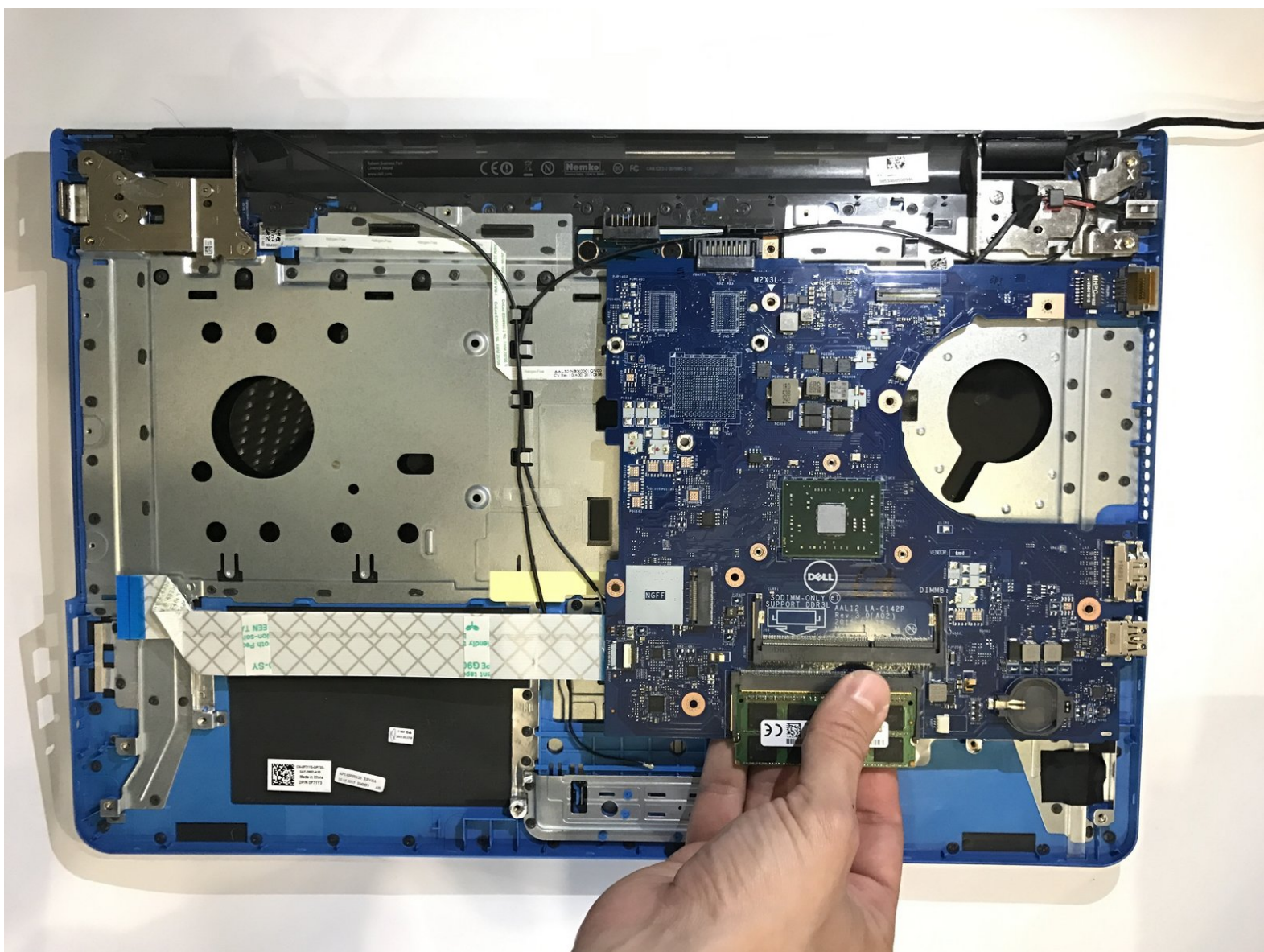




# Dell Inspiron 17-5755 Motherboard Replacement

This guide will instruct you on how to replace the motherboard for the Dell Inspiron 17-5755.

Written By: Jeff



## INTRODUCTION

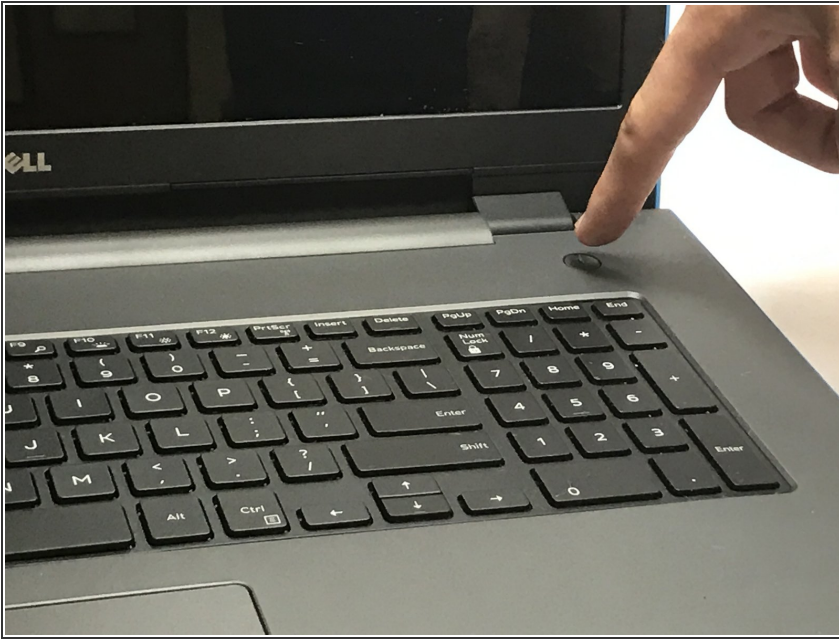
This guide will allow you to replace a defective motherboard for the Dell Inspiron 17-5755. Please ensure that the battery is removed before performing this replacement.




### TOOLS:

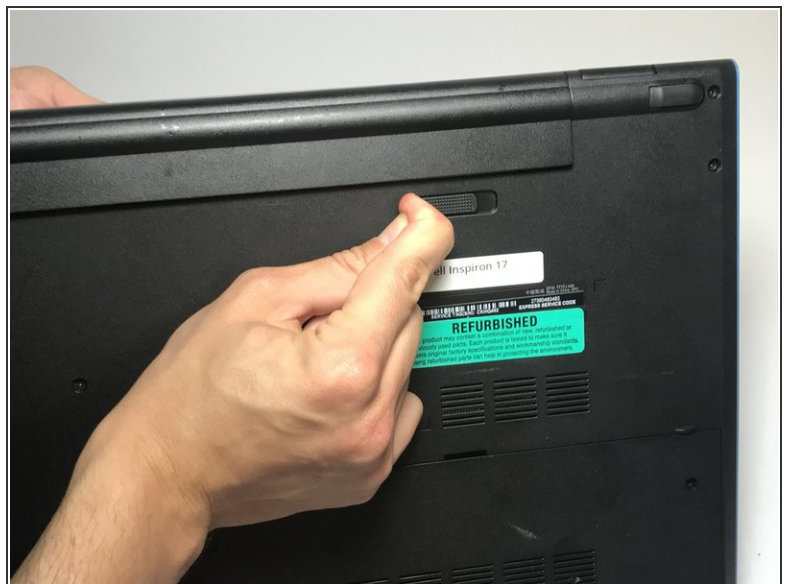
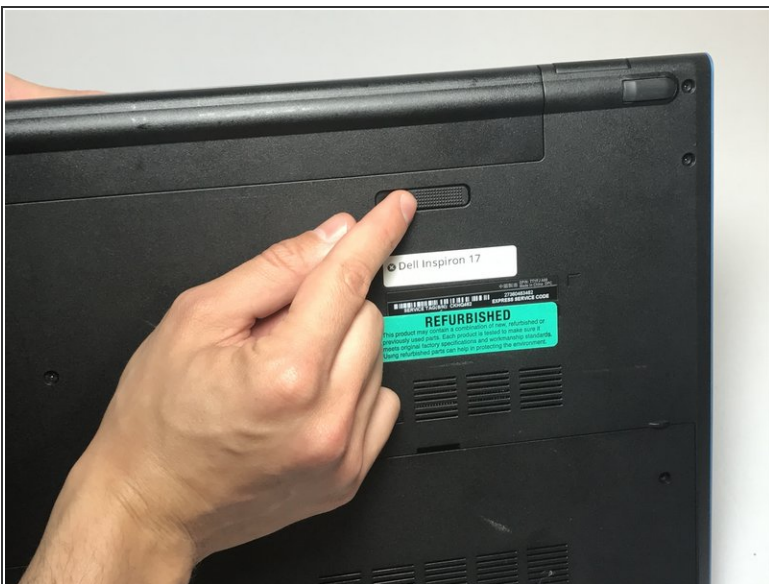
- [Phillips #0 Screwdriver](#) (1)
  - [iFixit Opening Tools](#) (1)
-

## Step 1 — Battery



 Make sure the computer has been shut down, and isn't plugged into an outlet before attempting to remove the battery.

## Step 2



- Find the battery release latch on the bottom side of the computer.
- Slide the latch to the left until you hear a "click". This indicates that the battery has been released.



## Step 3



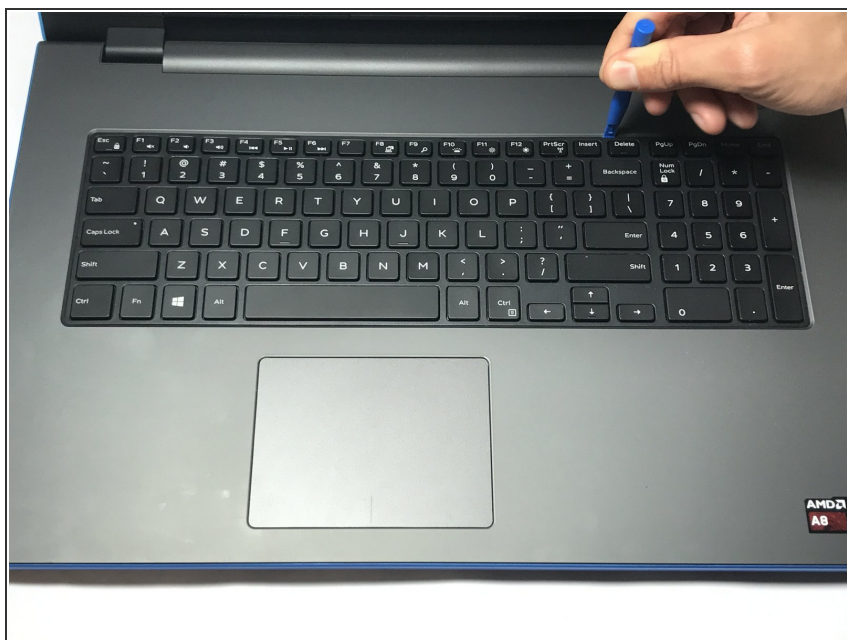
- Safely remove the battery from the laptop.

## Step 4 — Keyboard



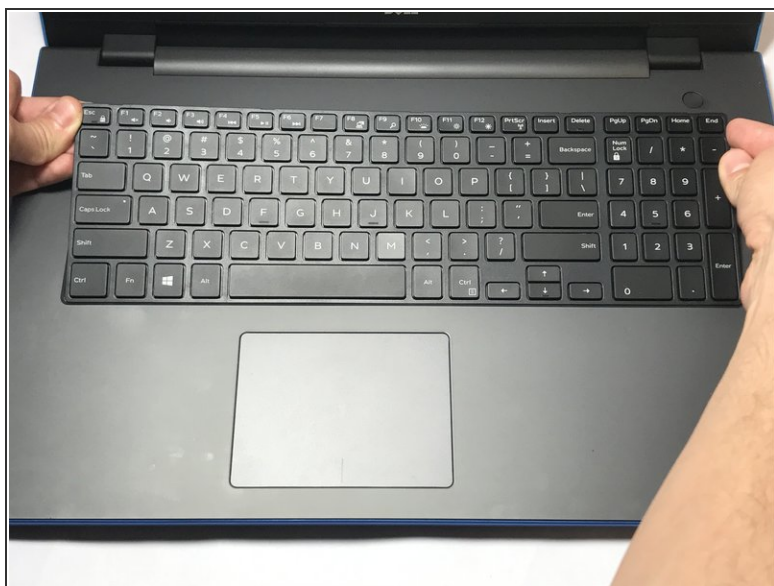
- Open the display of the laptop as far as possible, and locate the tabs which secure the keyboard to the laptop.

## Step 5



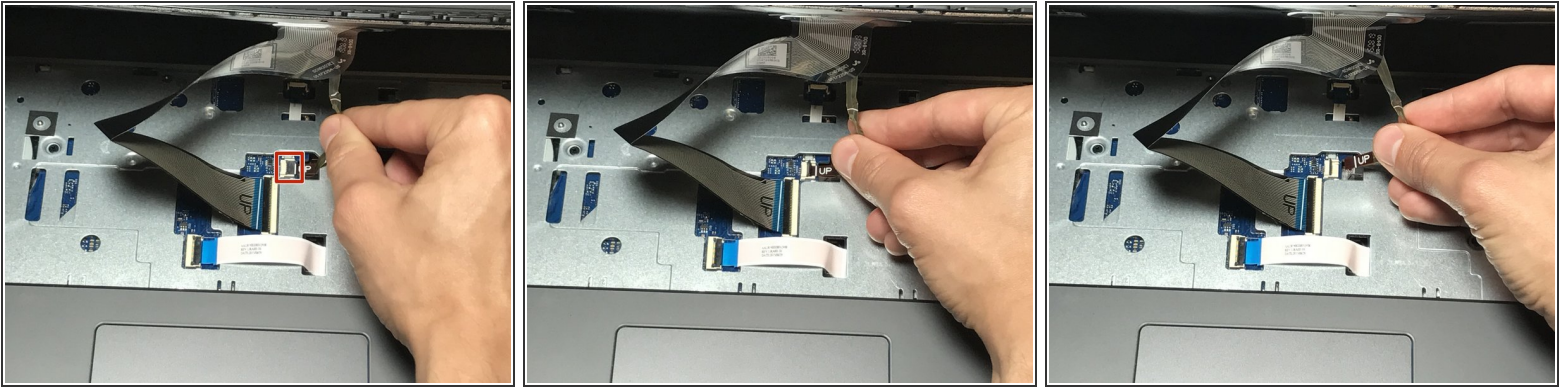
- Use a plastic opening tool to gently release the tabs that secure the keyboard to the laptop.

## Step 6



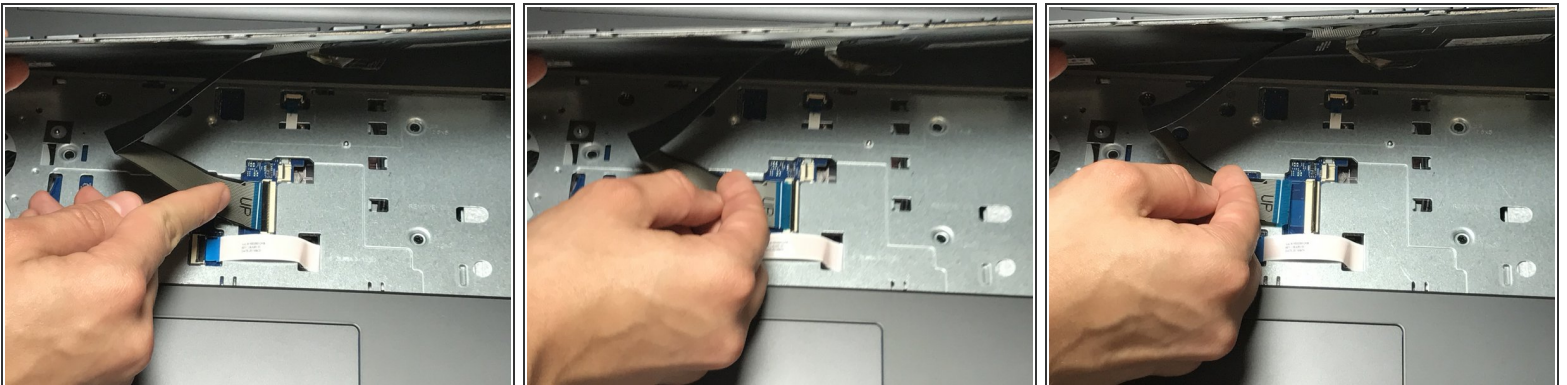
- Carefully lift the keyboard from the laptop, being mindful of any attachments that it may have.

## Step 7



- Lift the zero insertion force (ZIF) tab that secures the keyboard back light ribbon cable
- Afterwards, carefully detach the backlight cable from the laptop.

## Step 8



- Gently release the ZIF tab that secures the keyboard ribbon cable to the laptop.
- Afterwards, carefully slide the cable out of its slot.



## Step 9



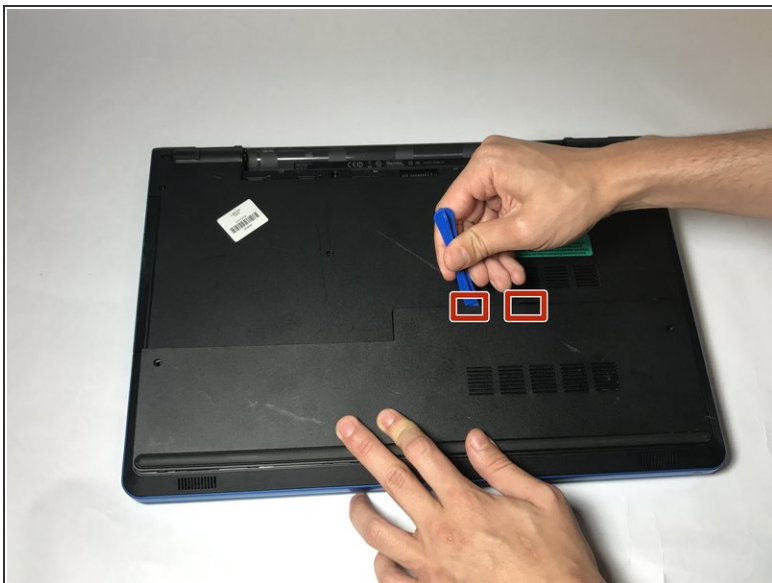
- Now that the keyboard is detached from the laptop, you may safely remove it.

## Step 10 — Motherboard



- Use a Phillips #0 screwdriver to unscrew the two 8mm screws which secure the base cover.

## Step 11



- Locate the tabs that hold the base cover to the laptop and use a plastic opening tool to gently release the base cover.

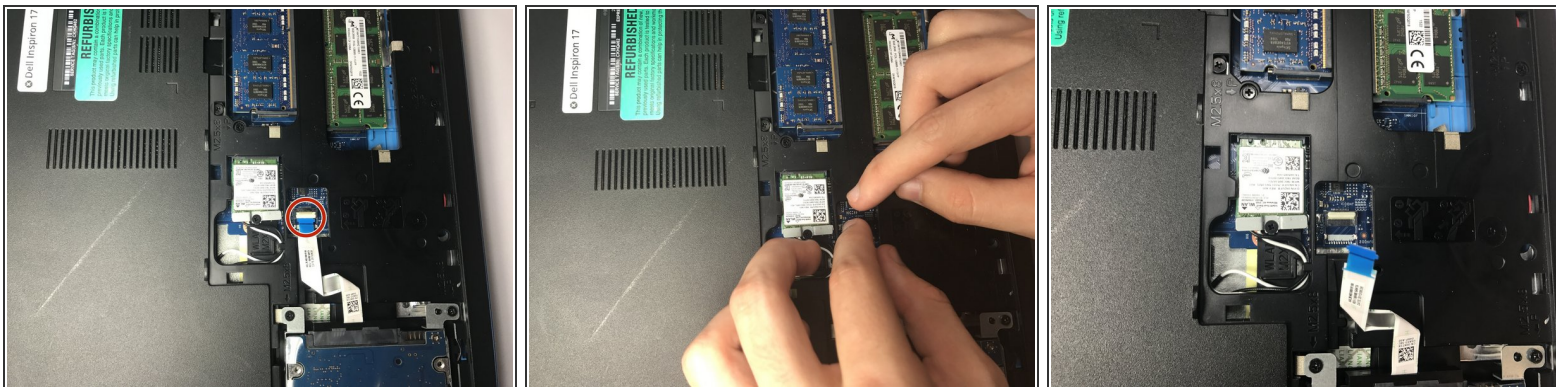
## Step 12



- Now with the base cover removed, you may lift it off of the laptop and continue.

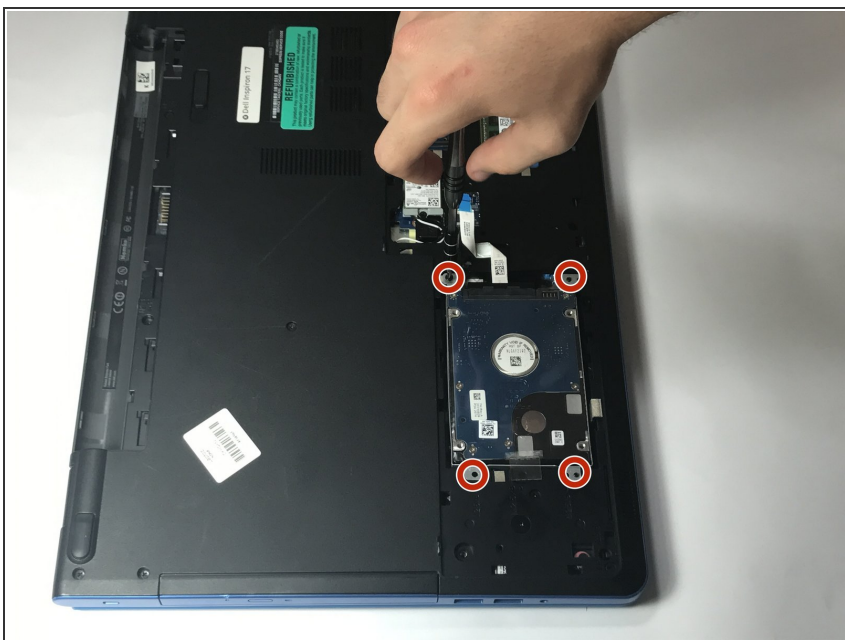


## Step 13



- Disconnect the hard drive ribbon cable from the laptop by lifting the latch which secures it.

## Step 14



- Use a Phillips #0 screwdriver to remove the four 8mm screws which secure the hard drive assembly to the laptop.

## Step 15



- Carefully remove the hard drive and its assembly from the laptop.

## Step 16



- Remove the 3mm screw which secures the wireless card bracket.
- After removing the screw, remove the wireless card bracket, along with the antenna cables secured to the wireless card.
- Afterwards, you may slide and remove the wireless card from the motherboard.

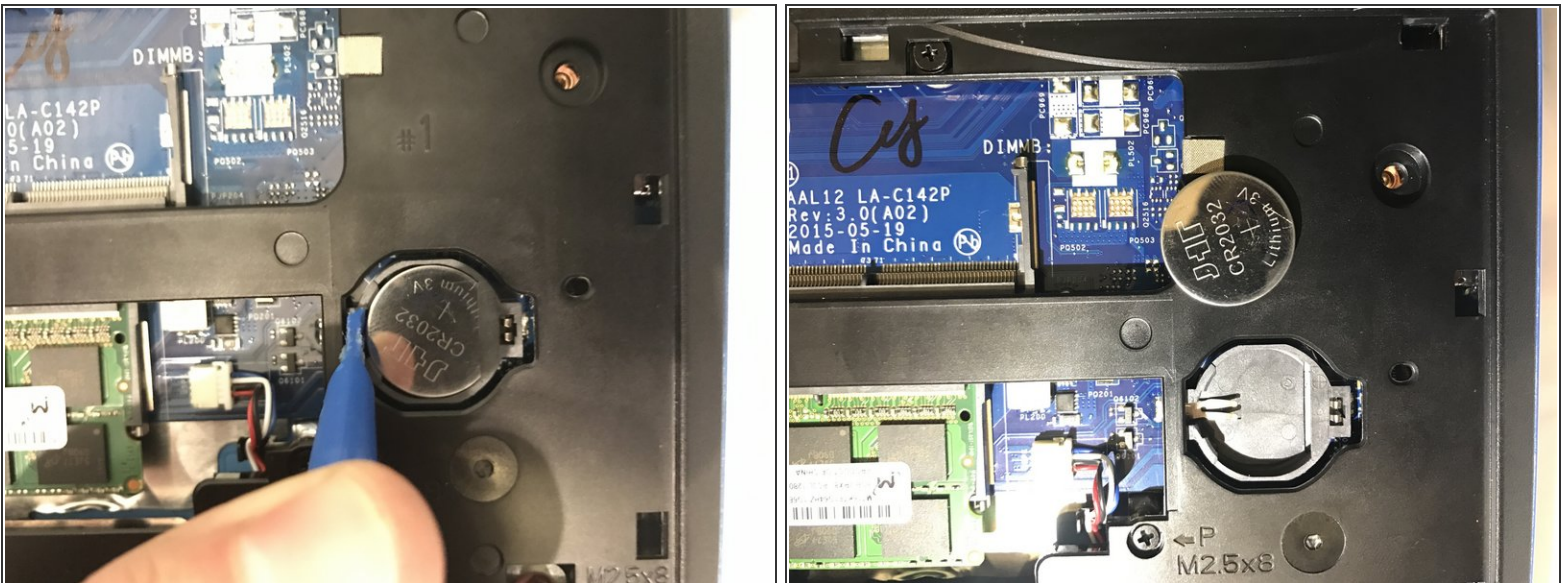


## Step 17



- Gently spread apart the securing clips on each end of the memory-module slot until the memory module pops out.
- Slide and remove the memory module afterwards.

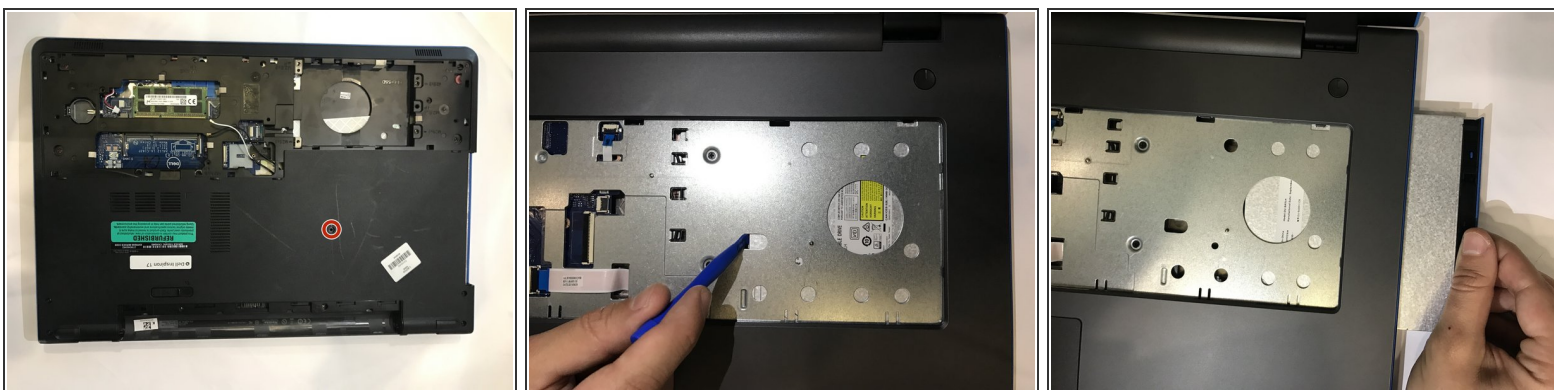
## Step 18



- Use a plastic opening tool to gently pry the CMOS battery found at the bottom right of the laptop out of the socket.

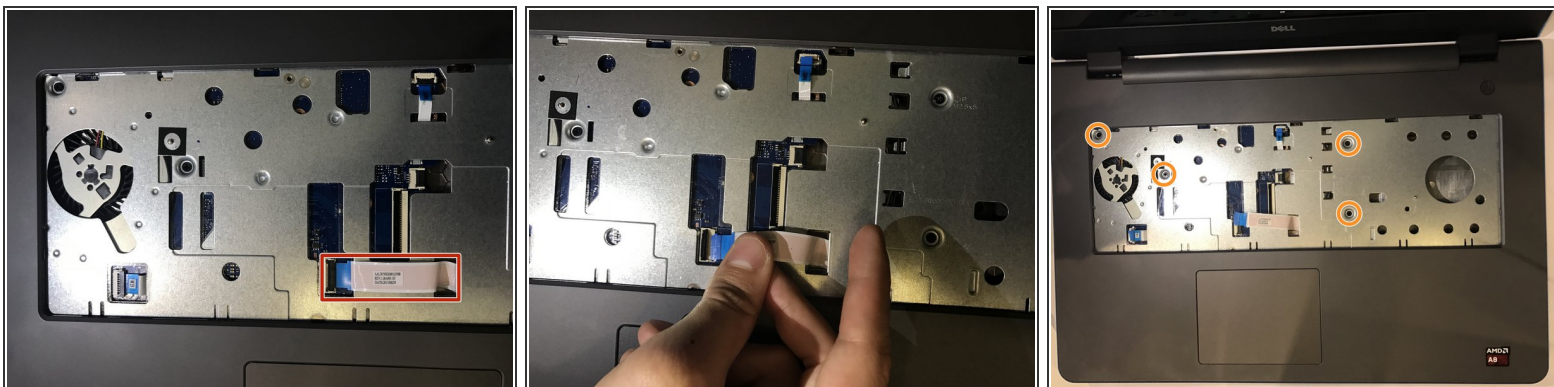


## Step 19



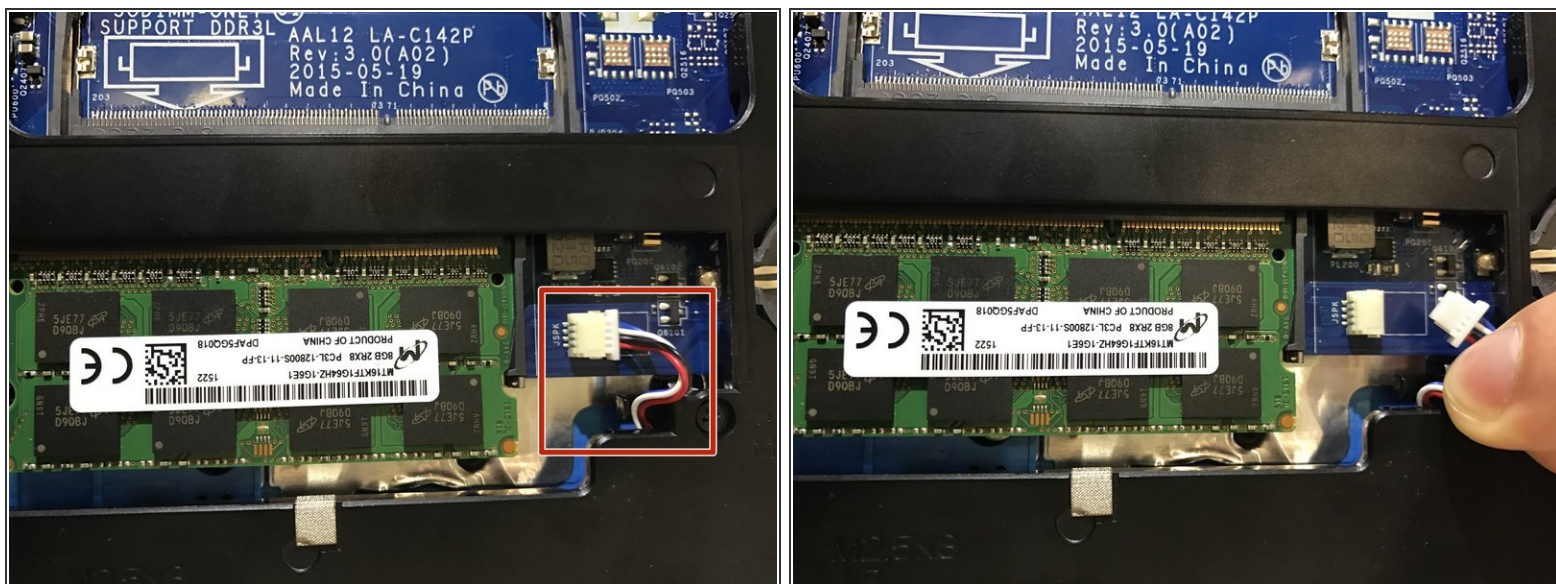
- Use a Phillips #0 screwdriver to remove the 3mm screw which secures the optical-drive assembly to the computer base
- Turn the computer over and using a plastic opening tool, push the optical-drive assembly out of the optical drive bay.
- Afterwards, safely pull the optical-drive assembly out of the optical-drive bay.

## Step 20



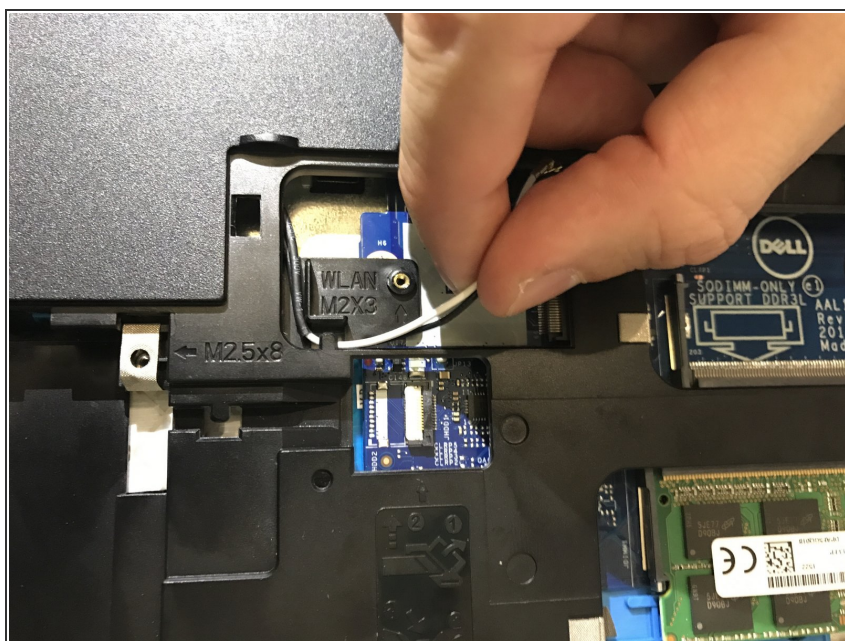
- Turn the computer over
- Lift the latch securing the optical drive ribbon cable, and disconnect it from the motherboard.
- Afterwards, use a Phillips #0 screwdriver to remove the four 5mm screws.

## Step 21



- Turn over the laptop, and safely disconnect the speaker cable.

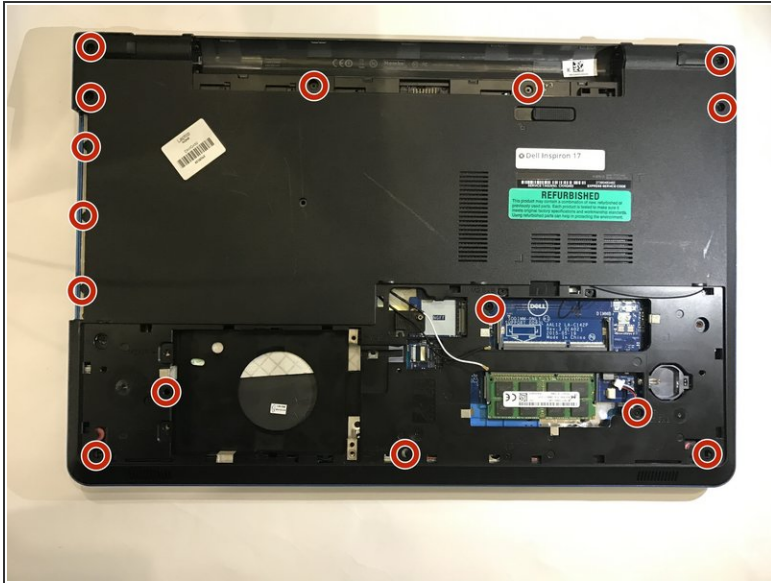
## Step 22



- Remove the antenna cables from the routing guides on the computer base.



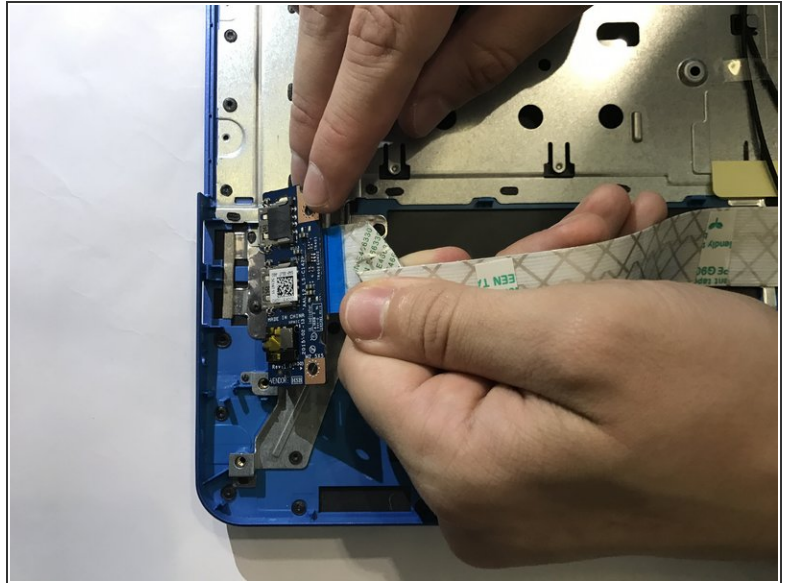
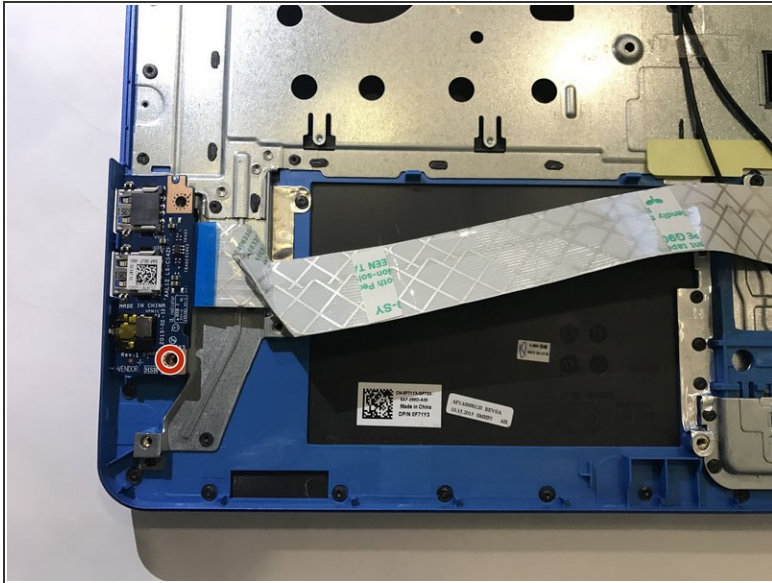
## Step 23



- Use a Phillips #0 screwdriver to remove the 15 screws that secure the computer base to the palm rest assembly.
- Afterwards, safely pry the computer base from the palm rest assembly using a plastic opening tool.
- ⓘ There are 3 different screws used: Three 2mm screws on the edge of the optical drive, two 3mm screws located where the battery was, and ten 8mm screws.

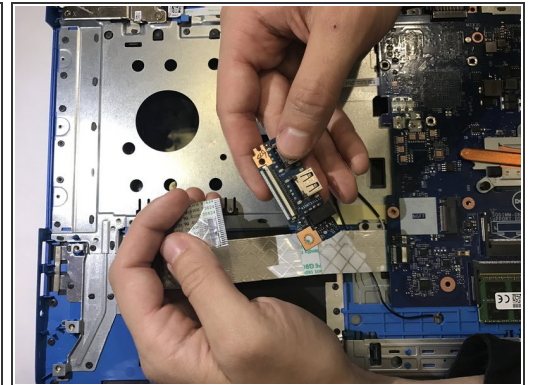
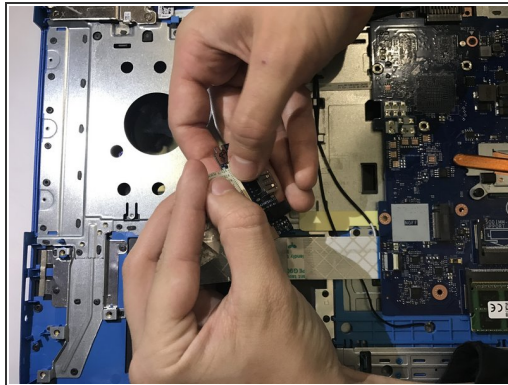
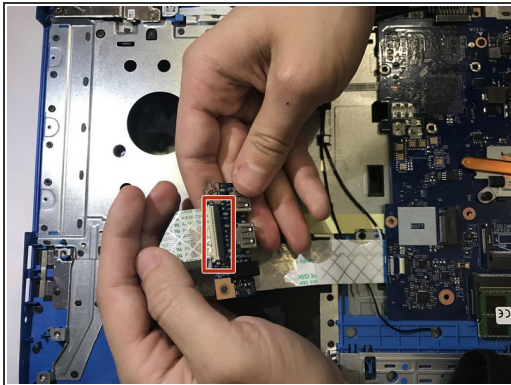


## Step 24



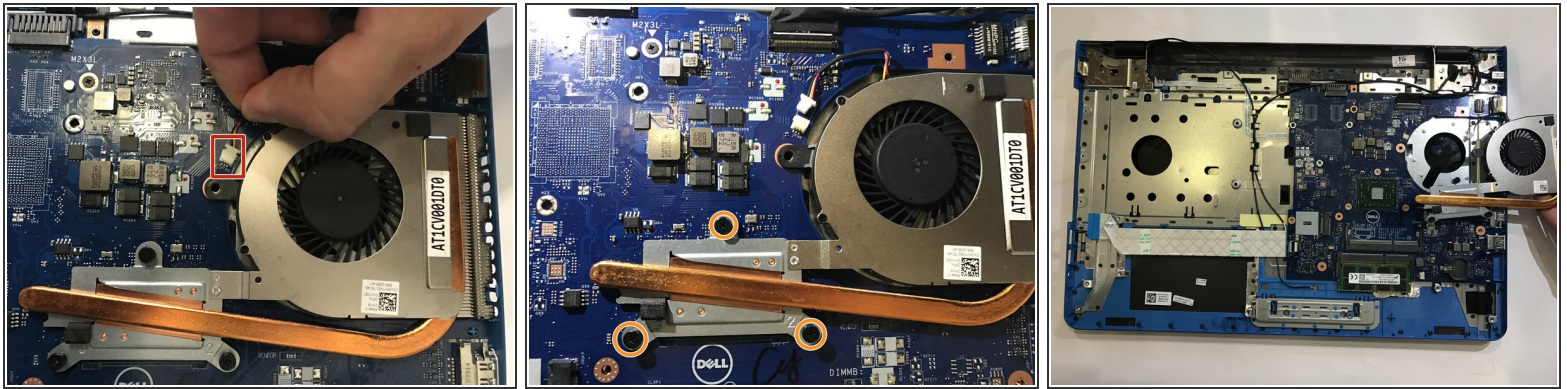
- Use a Phillips #0 screwdriver to remove the 5mm screw that secures the I/O board to the palm-rest assembly.

## Step 25



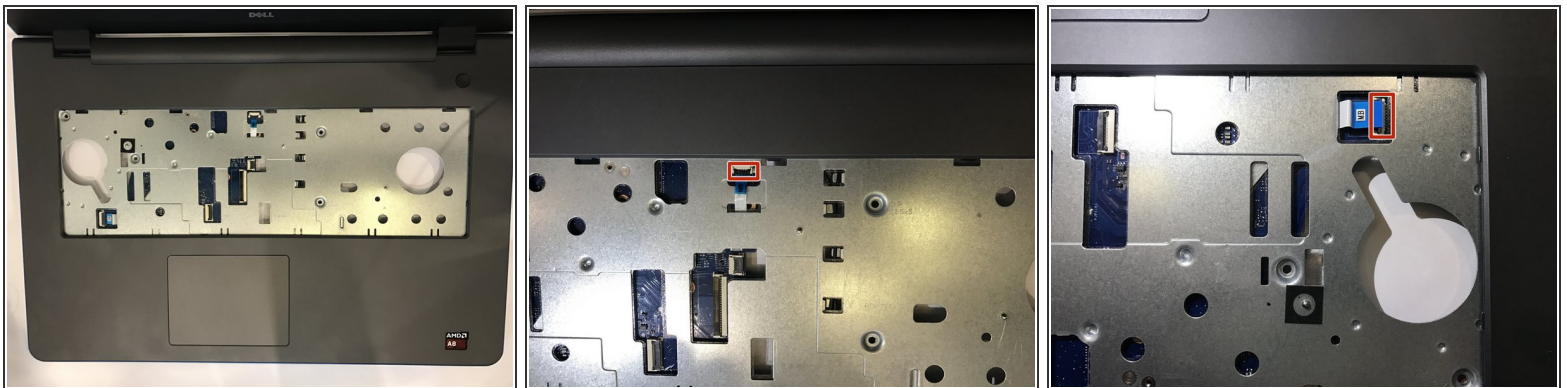
- Lift the I/O board and turn it over.
- Afterwards, lift the ZIF latch and disconnect the I/O-board cable from the I/O board.

## Step 26



- Disconnect the fan cable from the motherboard.
- Use a Phillips #0 screwdriver to remove the heat-sink screws in sequential order, as indicated by the numbers on the heat-sink assembly.
- Afterwards lift the heat-sink assembly off the motherboard.

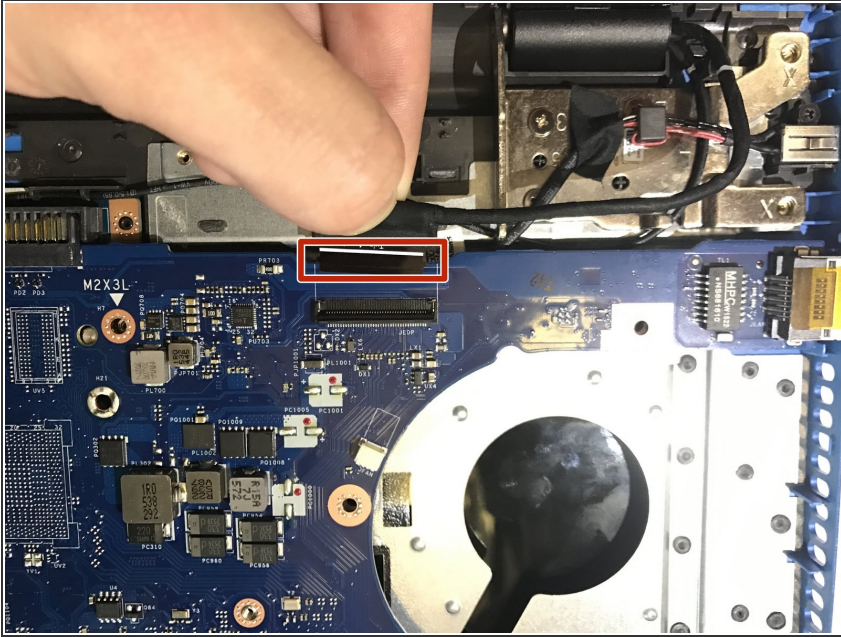
## Step 27



- Turn the computer over and open the display as far as possible.
- Lift the latches for the power button board cable and disconnect it along with the touchpad cable from the motherboard.

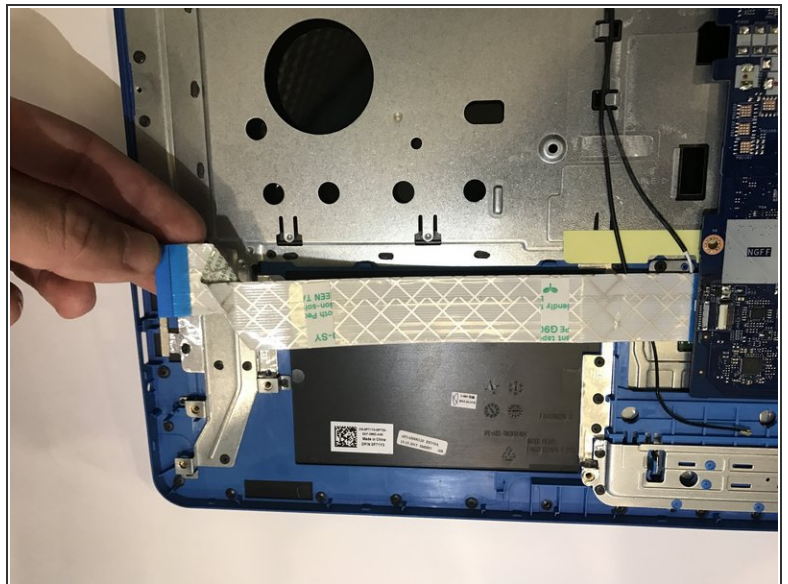
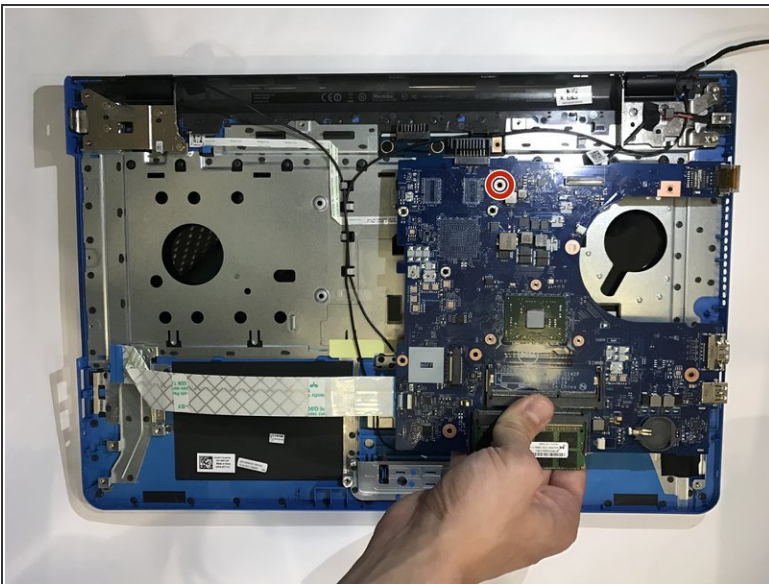


## Step 28



- Close the display and turn the computer over.
- Proceed to lift the latch which secures the ZIF display cable to the motherboard.
- Disconnect the display cable from the motherboard.

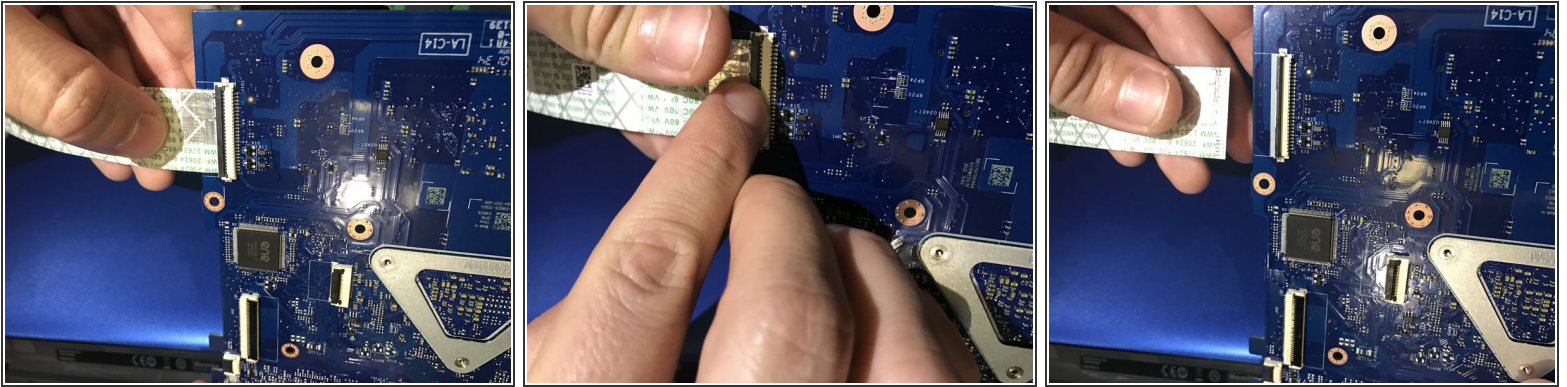
## Step 29



- Use a Phillips# 0 screwdriver to remove the 3mm screw that secures the motherboard to the palm-rest assembly.
- Afterwards, carefully peel the I/O board cable off the palm-rest assembly.

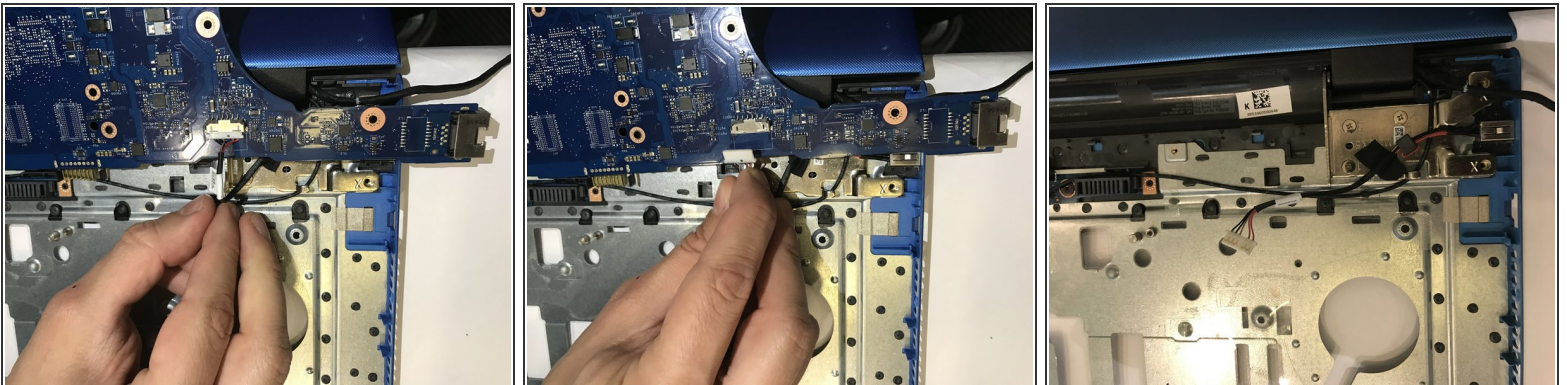


## Step 30



- Turn the motherboard over.
- Lift the latch to disconnect the I/O-board cable from the motherboard.

## Step 31



- Disconnect the power-adaptor port cable from the motherboard.
- Afterwards you may safely remove the motherboard from the laptop.

To reassemble your device, follow these instructions in reverse order.