



# Afterglow Wireless PS3 Controller Button Replacement

This guide will outline how to replace the four face buttons on the front of the Afterglow Wireless PS3 Controller.

Written By: Aj Coello



---

## INTRODUCTION

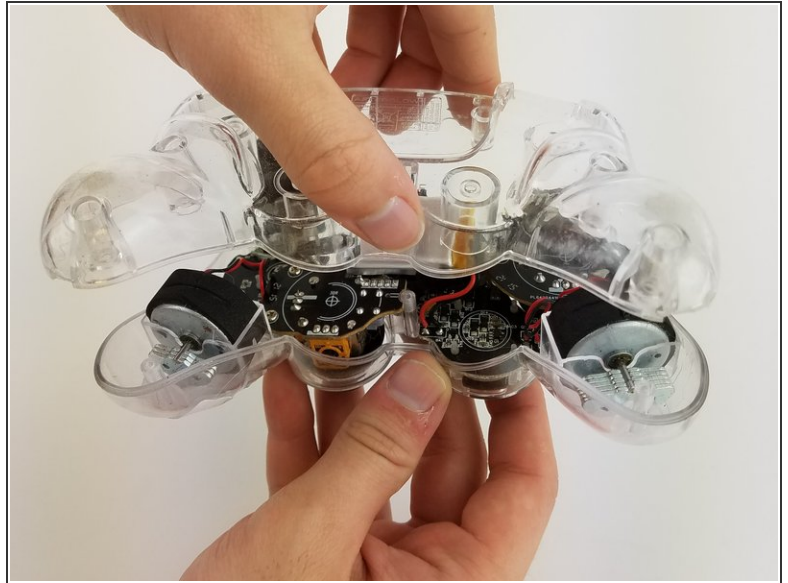
This guide will show the process of removing the back plate, vibration motors, and motherboard to access the buttons on the front of the controller.



### TOOLS:

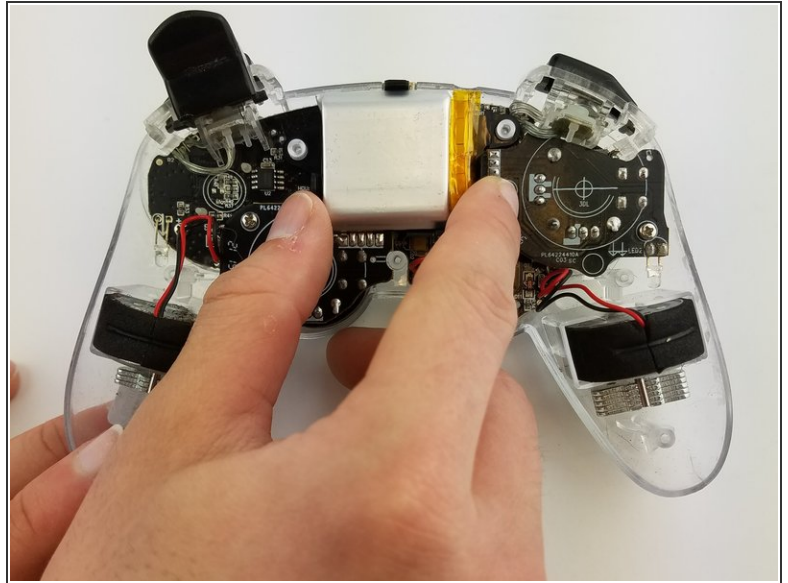
- [Phillips #0 Screwdriver](#) (1)
-

## Step 1 — Back Cover



- Lay the controller face down on a flat surface and remove the seven 9mm Phillips #0 screws on the back of the controller.
- Lift up and remove the controller back plate.

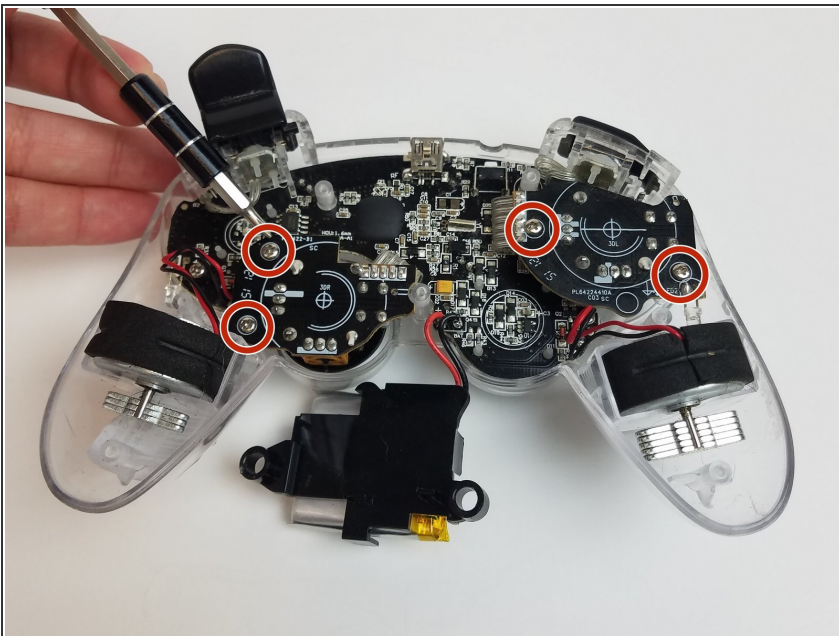
## Step 2 — Button



- Carefully remove the battery by lifting it straight up from its place.

⚠ Keep in mind that the red and black battery wires are attached to the motherboard. Handle these with care.

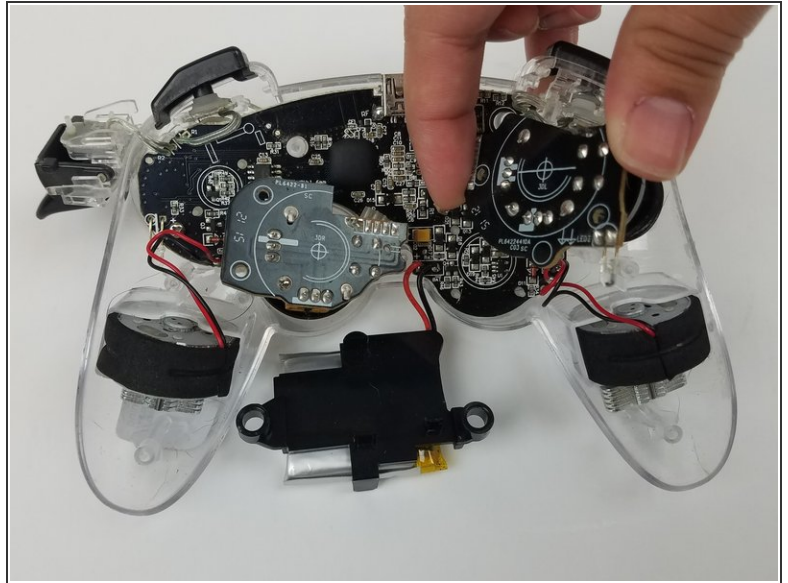
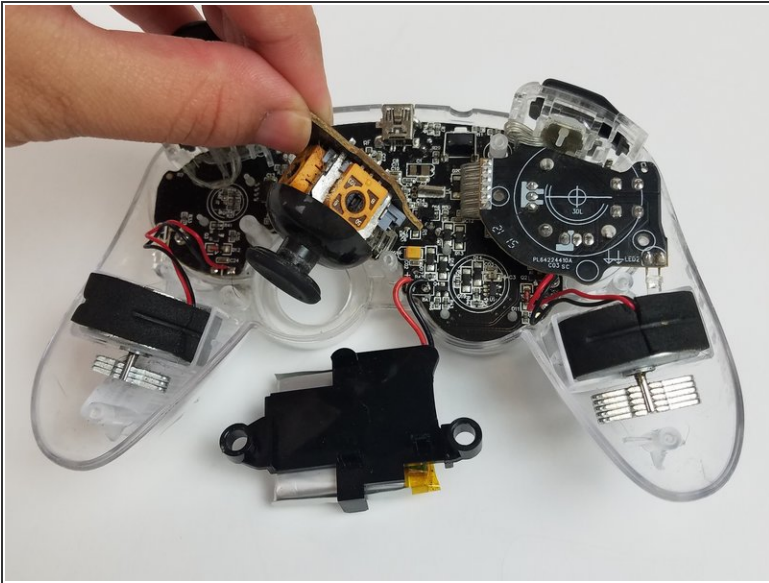
## Step 3



- Unscrew the four 9mm Phillips #0 screws that are attached to both joy stick control mini-motherboards. There are two screws for each mini-motherboard.

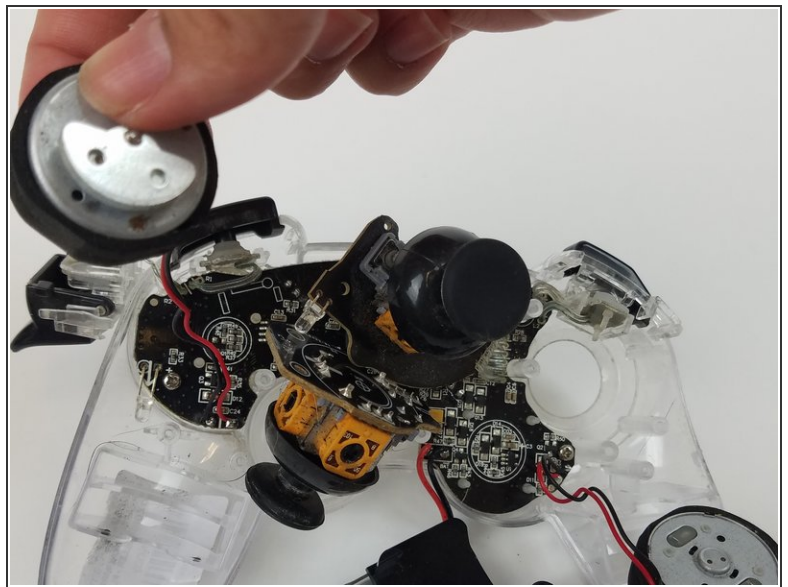
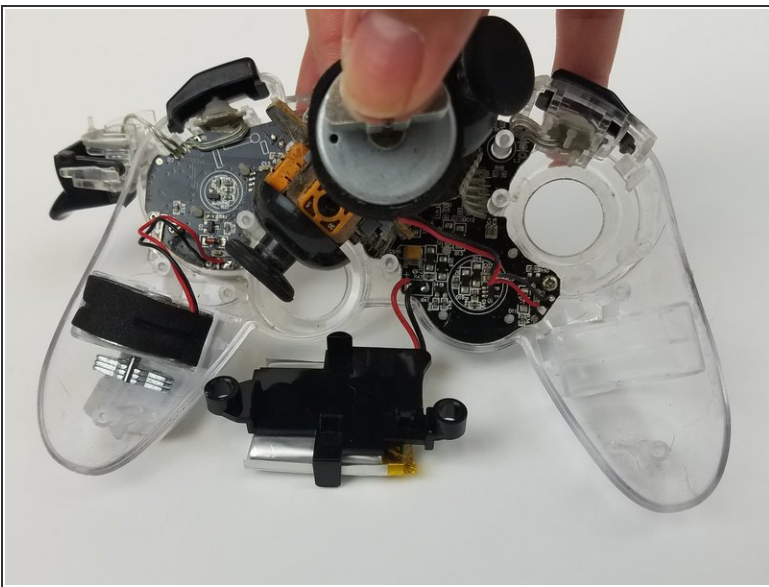


## Step 4



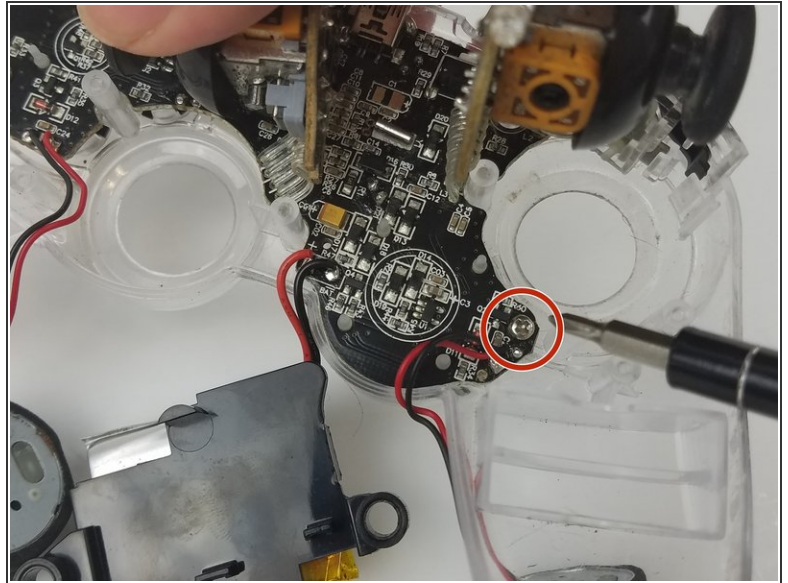
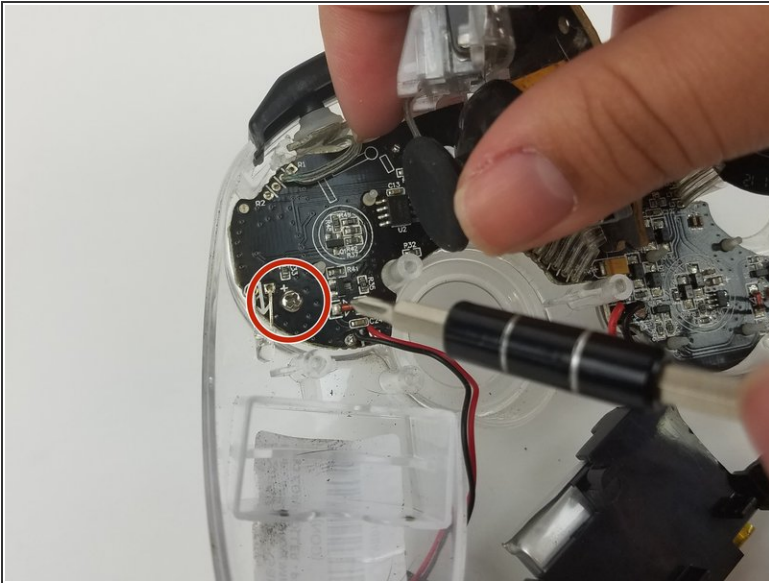
- Jiggle both joy stick control mini-motherboards out of their holding place.
- Set aside the mini-motherboards so you can access the main motherboard.

## Step 5



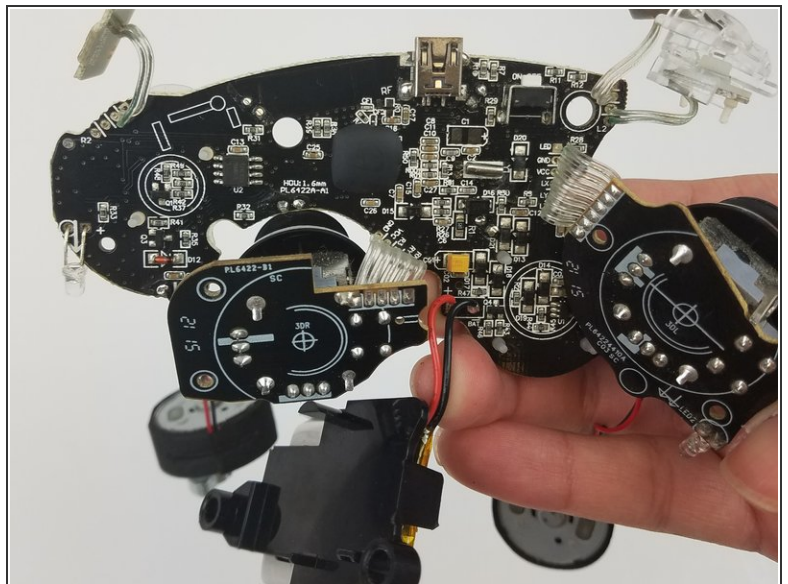
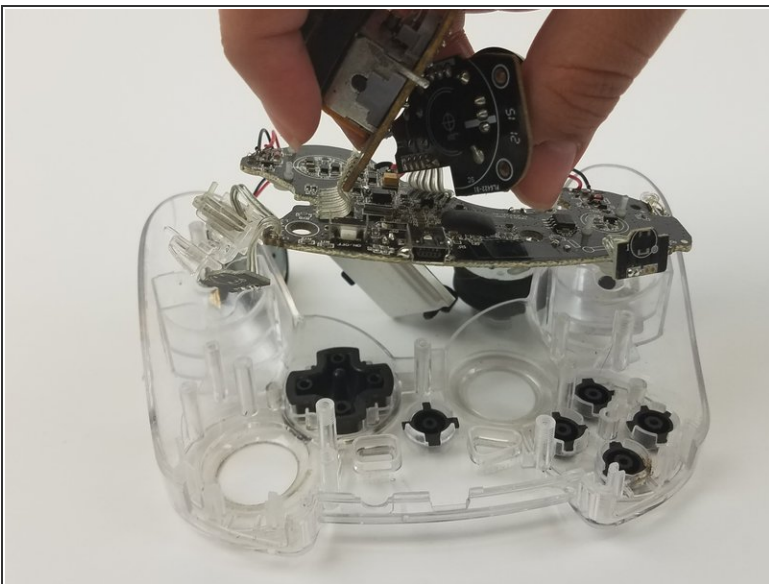
- Pull both vibration motors straight up from their holding place.

## Step 6



- Unscrew the two 9mm Phillips #0 screws holding the motherboard to the controller front plate.

## Step 7



- Detach the main motherboard from the front plate by carefully pulling it off.

⚠ Be careful of the trigger buttons when pulling out the motherboard. The buttons have mini-motherboards secured in place on the front plate. Carefully pull these out.



## Step 8



- Pick up the controller front plate and carefully turn it over so that the buttons left in it will fall out.
- ⓘ You may want to flip it while holding it over a container so the buttons do not go bouncing away from your work space.

To reassemble your device, follow these instructions in reverse order.