



Fugoo Tough XL Bass Speaker Replacement

The two bass speakers are located on the left...

Written By: Austin Coats



INTRODUCTION

The two bass speakers are located on the left and right ends of the Fugoo Tough XL device.

TOOLS:

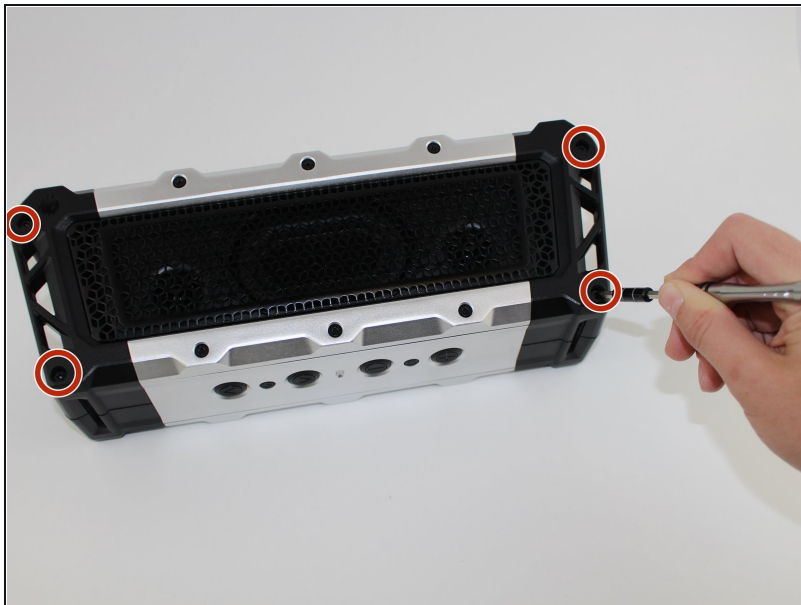
[iFixit Opening Tool](#) (1)

[TR10 Torx Security Screwdriver](#) (1)

[Tweezers](#) (1)

[3mm Hex Key \(or Bit\)](#) (1)

Step 1 — Case



- Remove the four 3 mm screws located in each corner using a 3 mm Hex screwdriver.

Step 2



- Gently pull up and off the outer casing.
- ① Do not feel afraid to use a bit of force if necessary.

Step 3



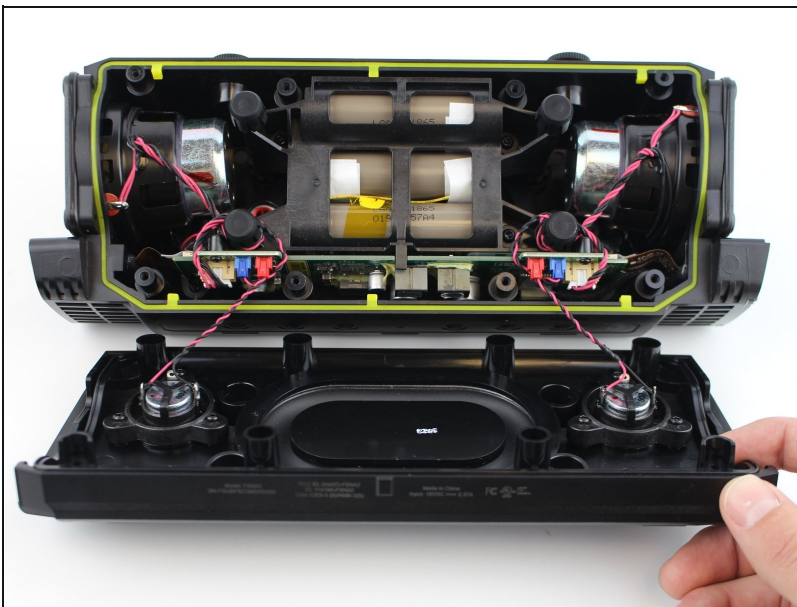
- Remove the internal device from the outer casing.
- Remove the four 12 mm screws on each corner using a T10 Torx screwdriver.
- Remove the eight 6 mm screws on the top and bottom using a T10 Torx screwdriver.

Step 4



- Use your hands to gently remove the side plates.
- Use an opening tool to pry off the back plate with the Fugoo trademark.

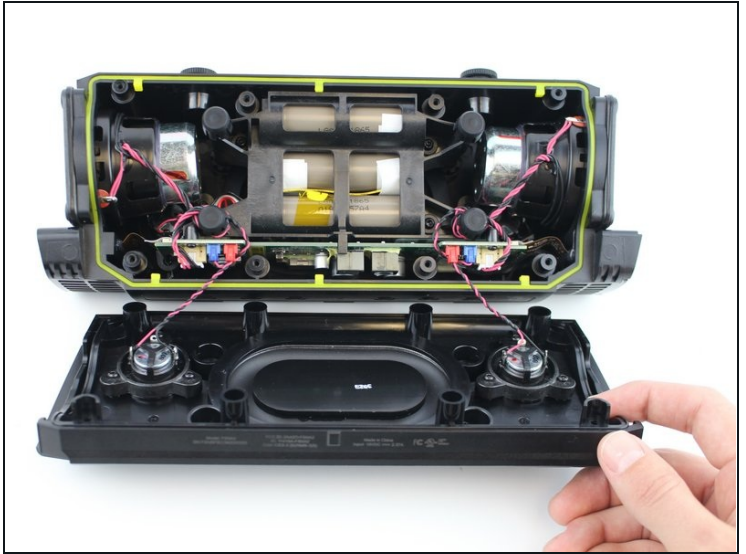
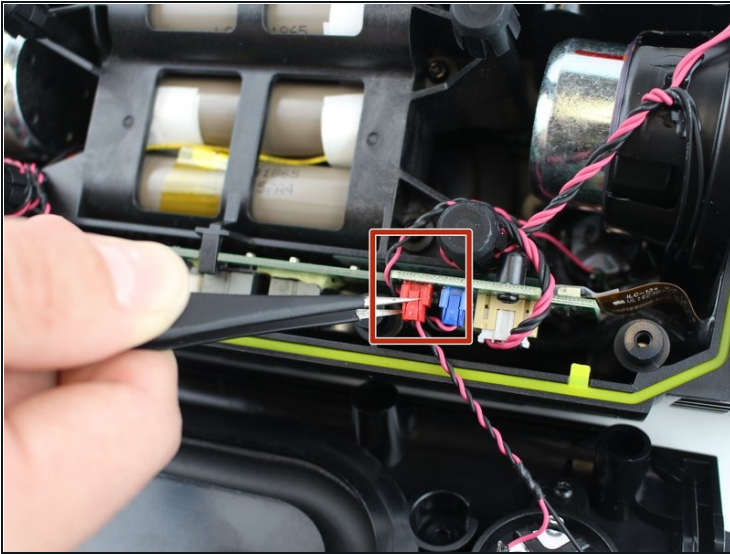
Step 5



- Slowly pull the front casing from the back casing. Avoid putting any tension on the connected cables.

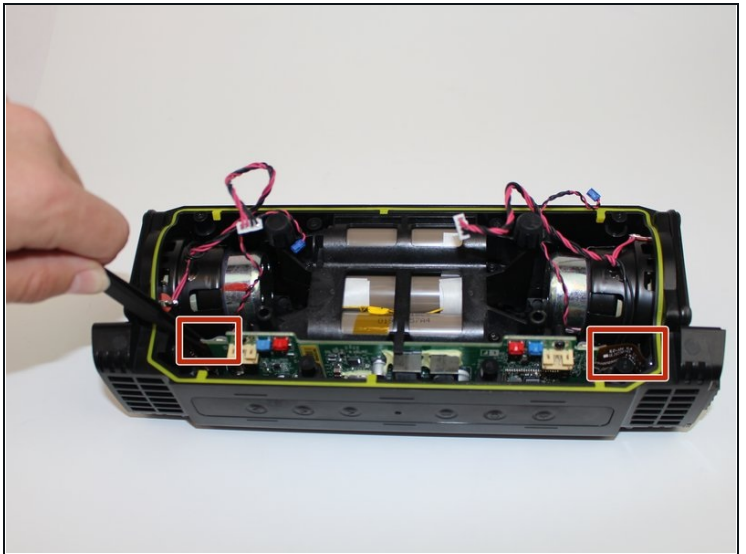
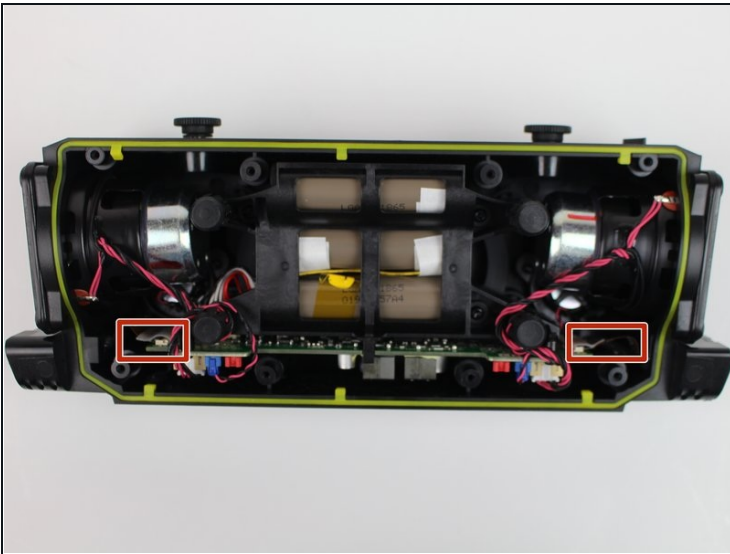
⚠ Separate the two slowly and consistently to avoid damaging the speaker cables.

Step 6 — Motherboard



- Carefully untangle the wires that connect the speaker to the motherboard.

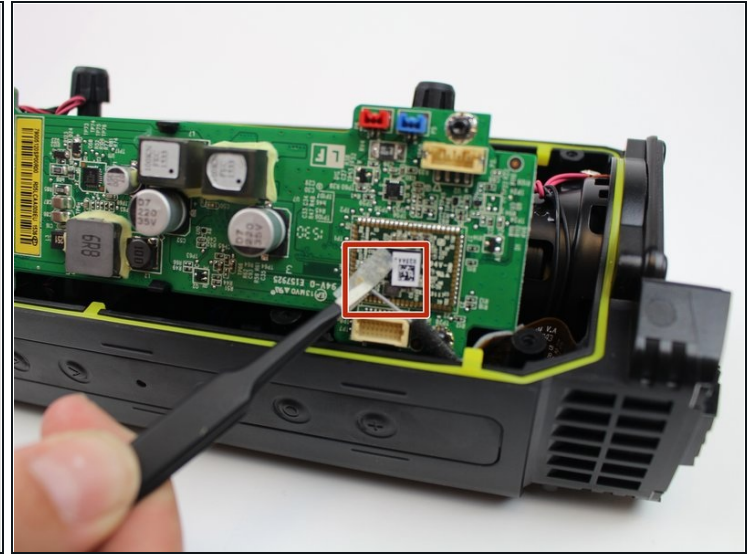
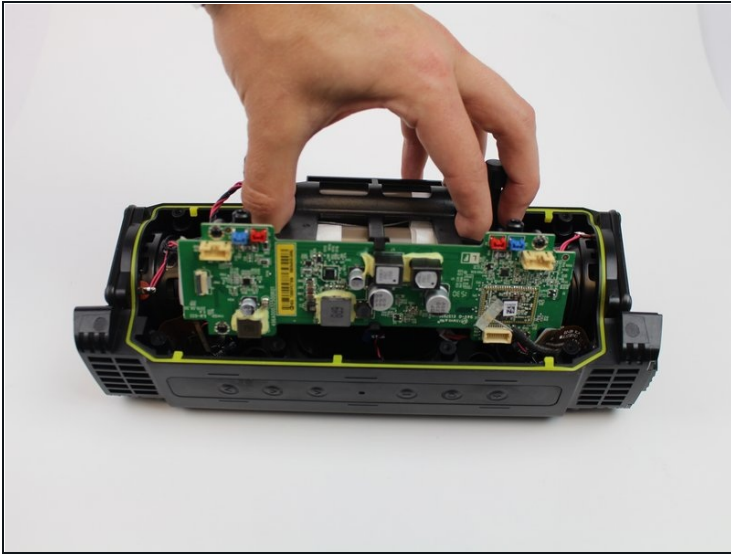
Step 7



- Use tweezers to remove the two ribbon wires on the left and right side of motherboard.

⚠ Do not pull the cables by the cord, as this could damage the cables and the motherboard. It is best to always disconnect the cables from the base, which is closest to the motherboard, using an iFixit opening tool.

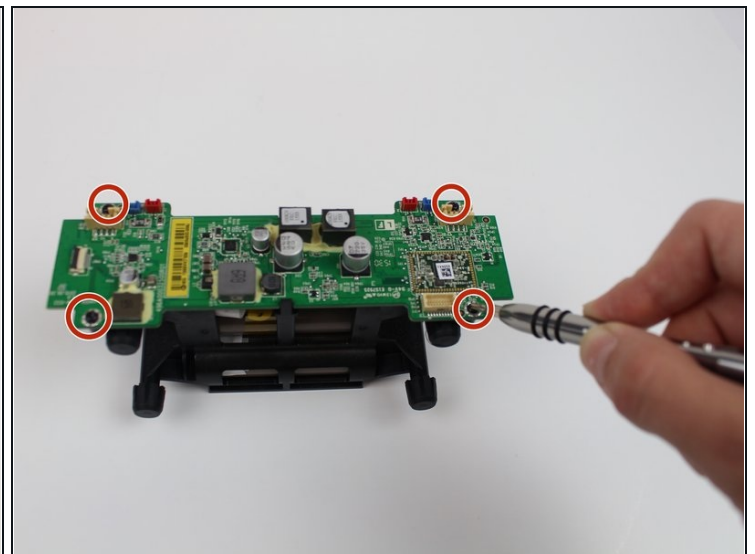
Step 8



ⓘ There is a hidden ribbon on the motherboard, that becomes visible once the motherboard has been pulled out.

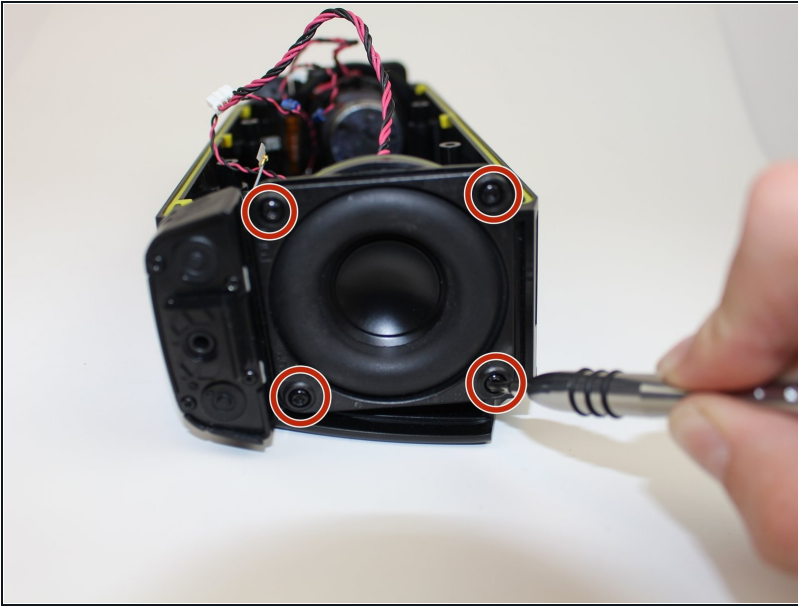
- Pull the motherboard halfway out.
- Gently unplug the ribbon using tweezers.

Step 9



- Remove the motherboard and battery.
- Remove the four 3 mm screws from the motherboard using a 3 mm Hex screwdriver.

Step 10 — Bass Speaker



- Remove four 3 mm screws using a 3 mm Hex screwdriver.

Step 11



- Pull the bass speaker from the internal case.

To reassemble your device, follow these instructions in reverse order.