



HP Mini 210-1199DX CMOS Battery Replacement

Overtime the CMOS Battery may drain and need...

Written By: Phillip Winston



INTRODUCTION

Overtime the CMOS Battery may drain and need replacement. This can cause a reset in the System Clock and other features of the Mini 210-1199x. In order to fix this, a battery replacement is needed.

Replace the CMOS Battery with a 3-volt 2032-size coin battery.

TOOLS:

[Spudger](#) (1)

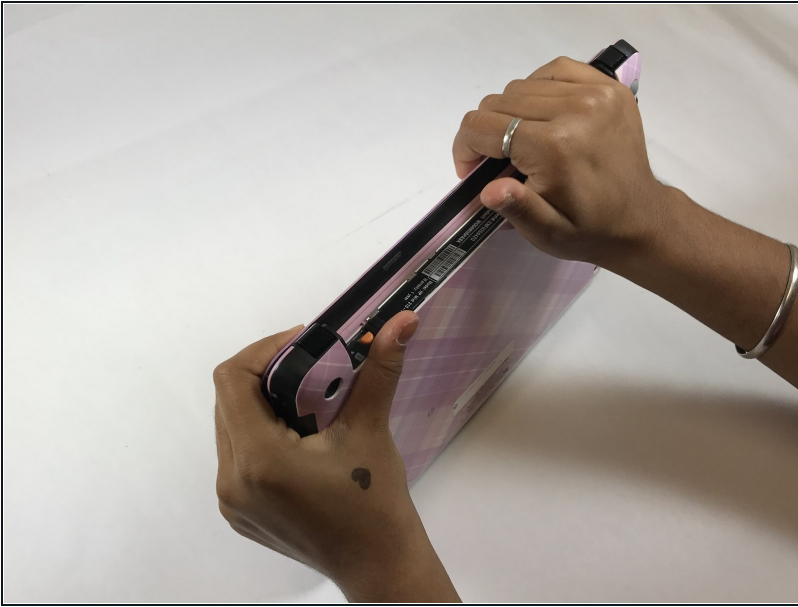
[Tweezers](#) (1)

Step 1 — Battery



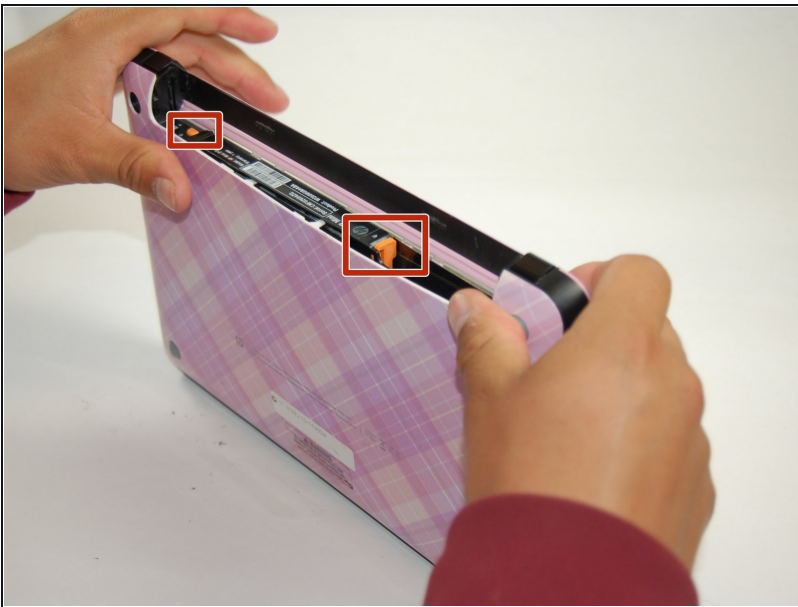
- Unplug the netbook.
- Secure the netbook in a upright position.
- Slide the plastic battery latch that secures it into the netbook.
- Keep thumb secure on the right tab as you begin to remove the battery.

Step 2



- Remove the battery from the device.

Step 3 — Bottom Cover



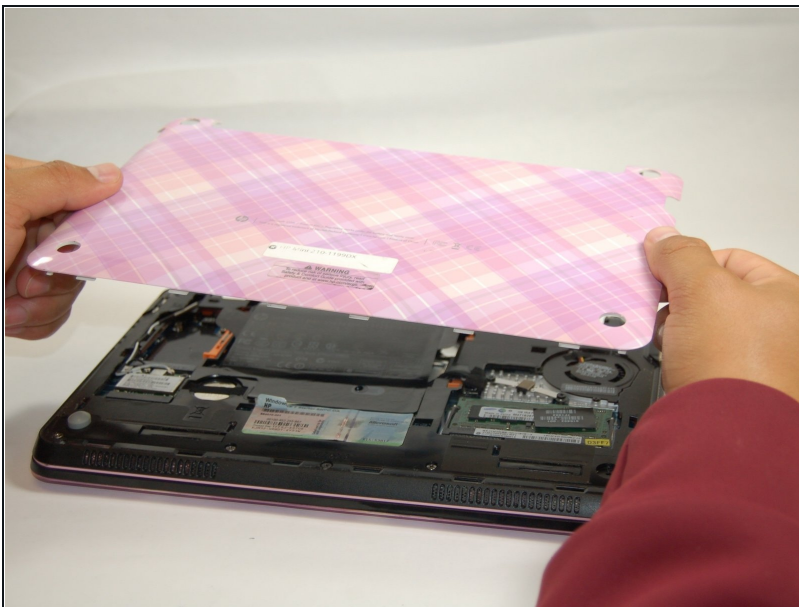
- Press down on the two orange buttons to release.
- If the case does not pop off, begin to use Spudger to pry the case off the back.

Step 4



- Place the spudger on corners and openings in order to begin removal of the back.
- Continue this on all corner until the case comes fully off of the back.

Step 5



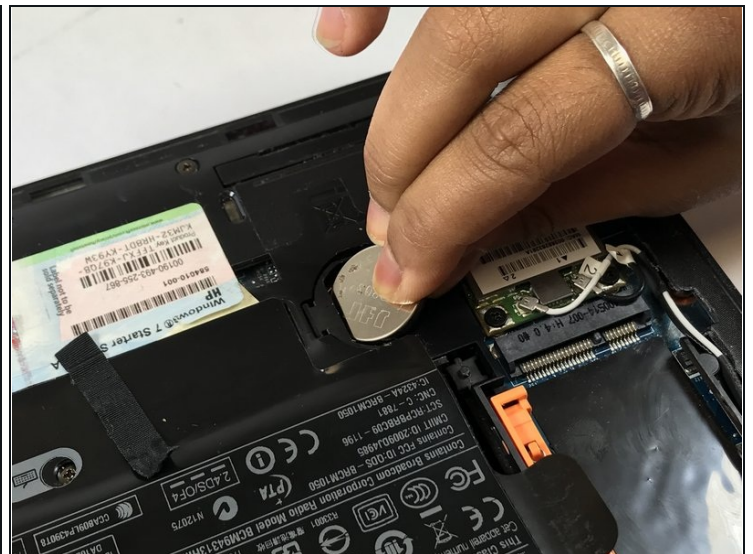
- Pull the case off of the device

Step 6 — CMOS Battery



- Simply pull the small black ribbon off of the battery with either your finger or a pair of [tweezers](#).

Step 7



- Using the spudger, carefully pop the battery out of the right side as seen in the picture.
- ☒ To reinstall, carefully place slide the battery back into place with the positive side facing upwards.

To reassemble your device, follow these instructions in reverse order.