



Panasonic Lumix DMC-G5 LCD Replacement

Use this guide to gain access to the housing component containing the LCD screen.

Written By: Gabriel Gonzalez Jr



INTRODUCTION

Replacing the LCD face requires removal of a few small screws on the outside of the device.



TOOLS:

- [JIS Driver Set](#) (1)
 - [iFixit Opening Tools](#) (1)
-

Step 1 — LCD



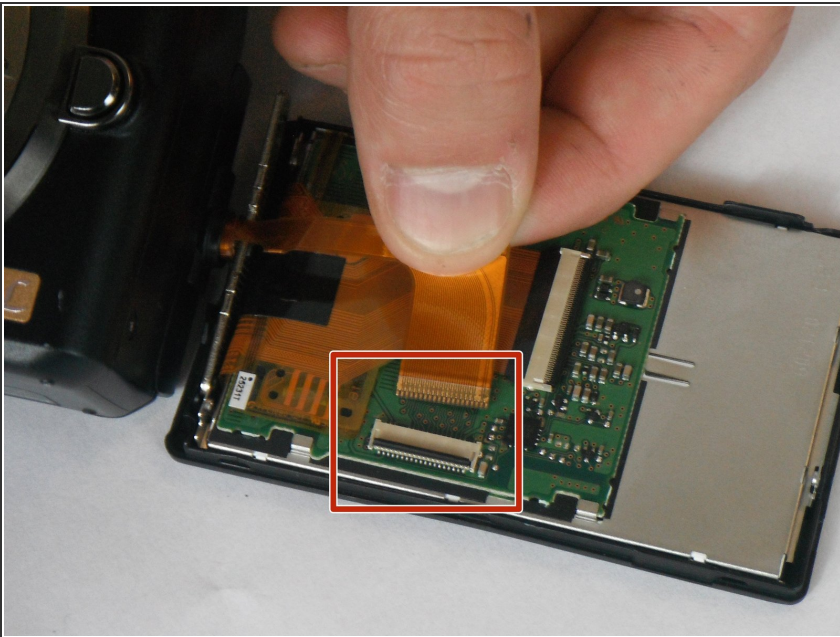
- Use J0 screwdriver to remove the two 3.2 mm screws from the outside of the assembly.
- Use the J0 screwdriver to remove the two 5.6 mm screws from the inside of the face near the swivel.
- Rotate the face to more easily gain access to the screws.

Step 2



- Slide the wide plastic opening tool underneath the crack of the side of the face and separate the components.

Step 3



- Carefully remove the filament connections from the LCD backing by lifting the black lever up first on the connector, then pulling gently outward from the LCD backing with your fingers.
- Replace the filament connections into the backing of the new LCD face to complete replacement..

To reassemble your device, follow these instructions in reverse order.