



Yujin Robot iCLEBO Arte Power Transformer Replacement

Follow this guide to replace the power transformer for your Yujin Robot iCLEBO Arte.

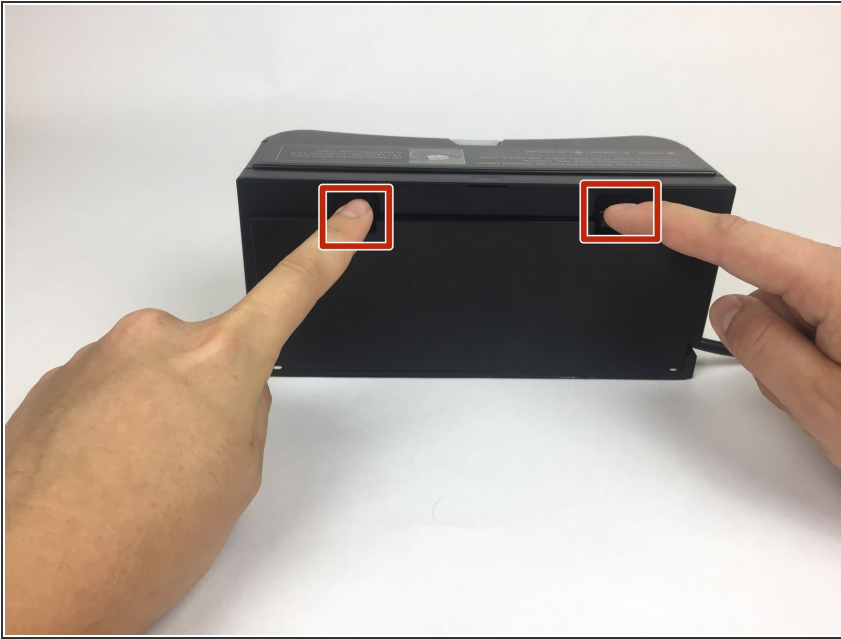
Written By: Trent Bingel



INTRODUCTION

This guide will show you how to replace the power transformer for your Yujin Robot iCLEBO Arte.

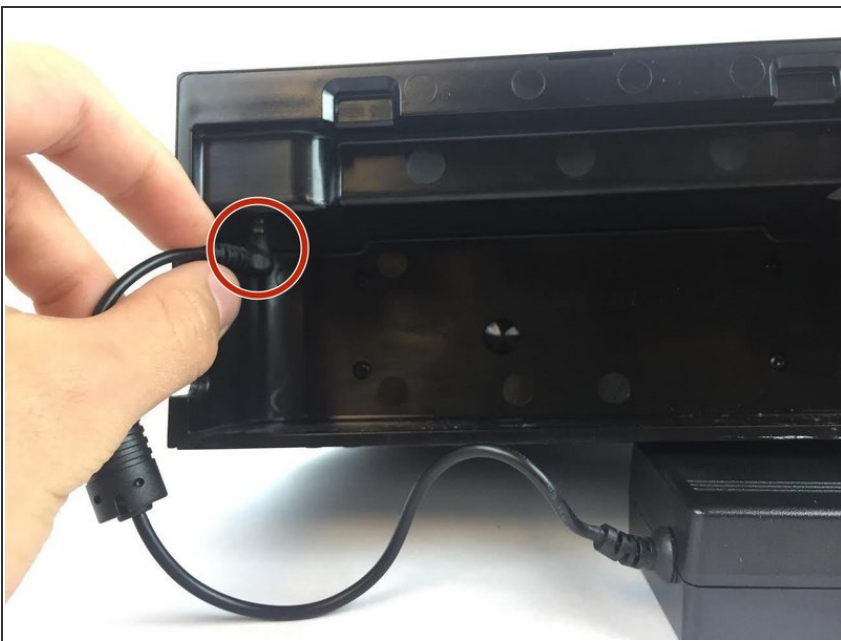
Step 1 — Power Transformer



⚠ Unplug transformer before performing operations on it!

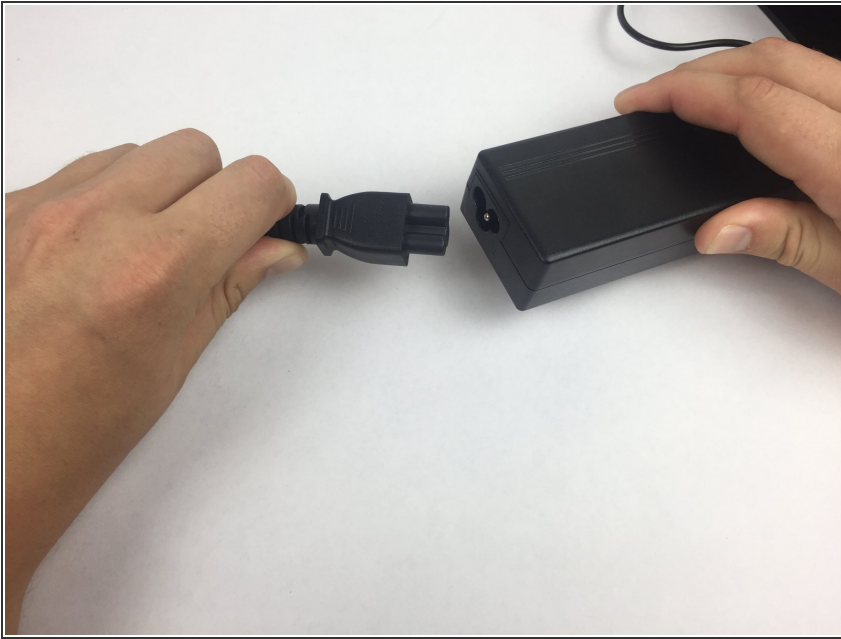
- Press on the two black plastic tabs to remove the rear cover for the charging base.

Step 2



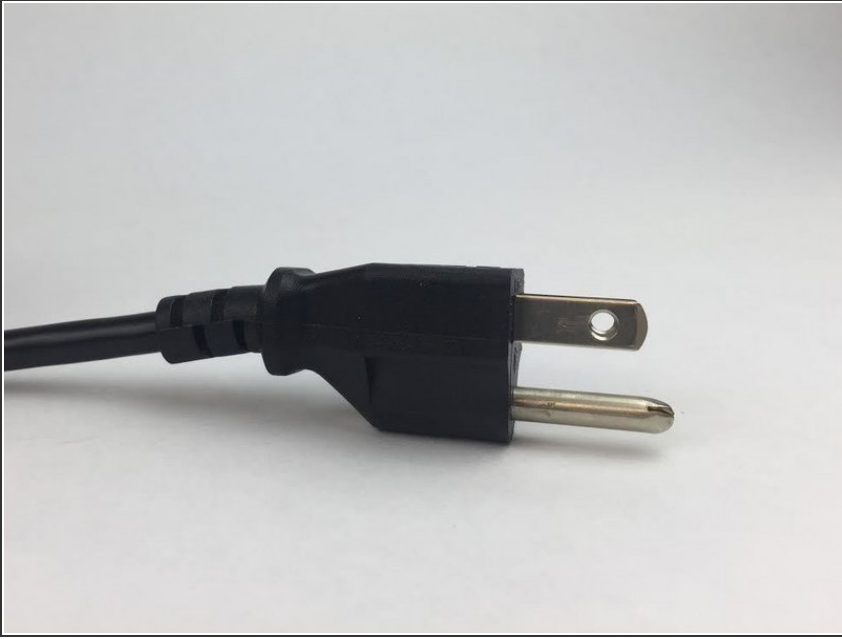
- Remove the long cable from inside the base and gently pull the connector from the base.

Step 3



- Pull out and remove the old cable from inside the charging base.
- Detach the thicker part of the cord from the black transformer box.

Step 4



- Replace the new thick cable with the old cable just removed. Make sure the cable can fit into the wall before discarding the other cable. If you are residing in the US, this is the connector you need to use.

To reassemble your device, follow these instructions in reverse order.