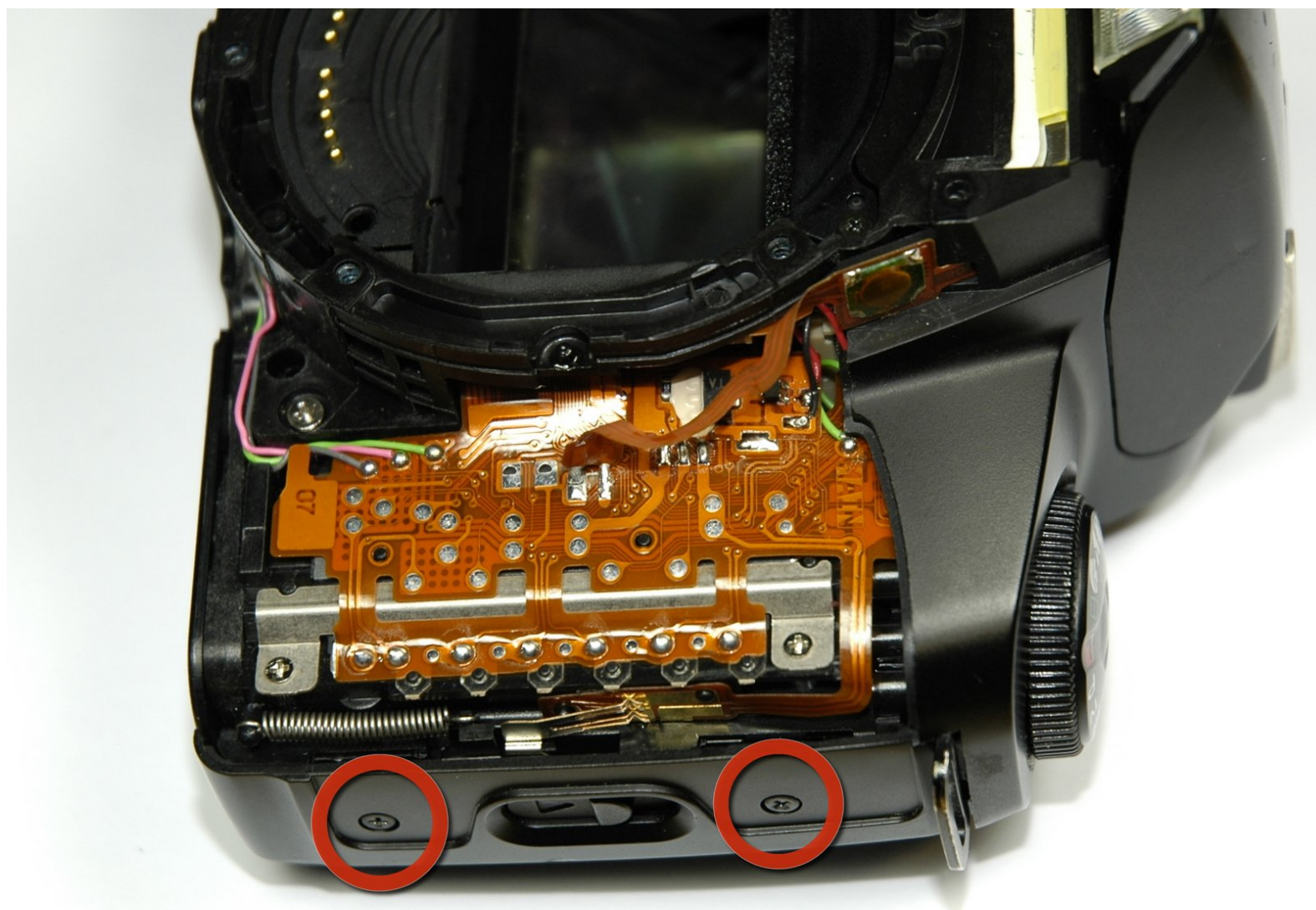




Canon EOS Rebel G Back Panel Latch Replacement

How to replace faulty back panel latch.

Written By: Zach



INTRODUCTION

This guide teaches how to to install the back panel latch on your camera.



TOOLS:

- [Phillips #00 Screwdriver](#) (1)



PARTS:

- [Replacement Latch](#) (1)

Step 1 — Front Panel



- Using a #00 Phillips screw driver, remove three 4.4 mm Phillips screws as indicated by the red circles.

Step 2



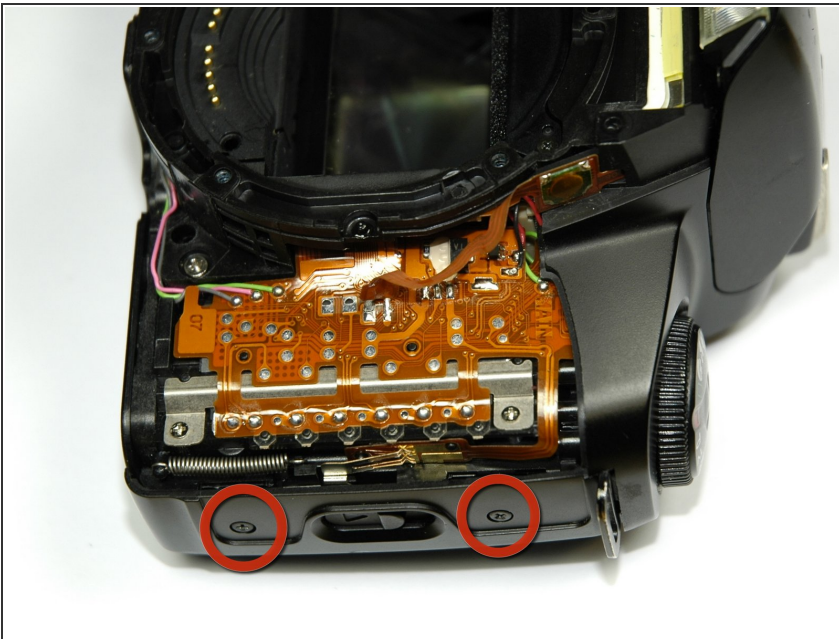
- Using your finger, peel back the textured grip so the components are separated.

Step 3



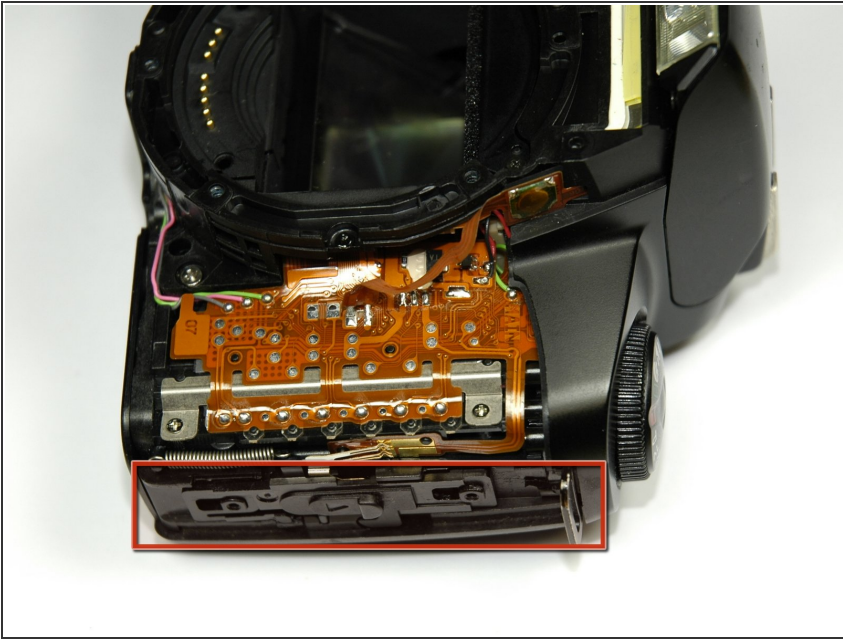
- Using the flat end of a spudger, loosen the connection between the front panel and the device.
- Remove the front panel using your hands.

Step 4 — Back Panel Latch



- Using a 00 Phillips screw driver, unscrew the two screws located on the side of the camera.
- Two 4.3 mm Phillips screws

Step 5



- Open the back panel by pushing the locking latch up.
- Lift the latch cover off of the camera body.

Step 6



- Slide the side latch (for the back door) up and then lift straight away from the camera body.
- ⓘ Sometimes the latch will detach while pushing it up.

To reassemble your device, follow these instructions in reverse order.