



# Turtle Beach Elite Pro Left Speaker Replacement

The purpose of this guide will be to aid user in repairing their left speaker.

Written By: Alexis Uribe



## INTRODUCTION

This guide will assist users in repairing the left speaker. It will help users repair a left speaker that is either producing no sound or inaudible sound.



### TOOLS:

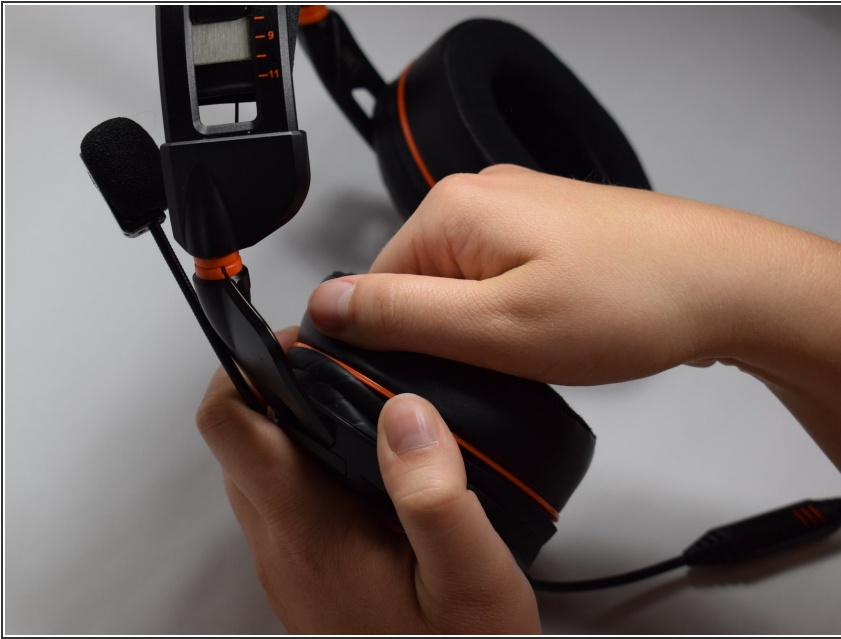
- [iFixit Opening Tools](#) (1)
- [Flush Wire Cutters](#) (1)
- [Phillips #0 Screwdriver](#) (1)
- [Soldering Iron](#) (1)




### PARTS:

- [Speaker](#) (1)

## Step 1 — Ear Cushions



- Firmly pinch ear cushion between thumb and forefinger.
- Using the hand not holding the ear cushion, grasp the orange plate that is below the ear cushion.

 If the black rubber lining on the orange plate is grasped, then the rubber lining on the ear piece may tear.

## Step 2



- Rotate ear cushion counter-clockwise about half an inch.
- ⓘ The ear cushion should audibly snap out of place.
- After it has audibly snapped out of place, lift the ear cushion off of the device.
- ✦ During reassembly, rotate the ear cushion clockwise.

### Step 3



- Using the new cushion, align the pegs located on both the orange plate and ear cushion.
- ☑ Make sure that both the ear cushion and the orange plate have the same designation.
- Once the pegs are aligned, push the new ear cushion in place.

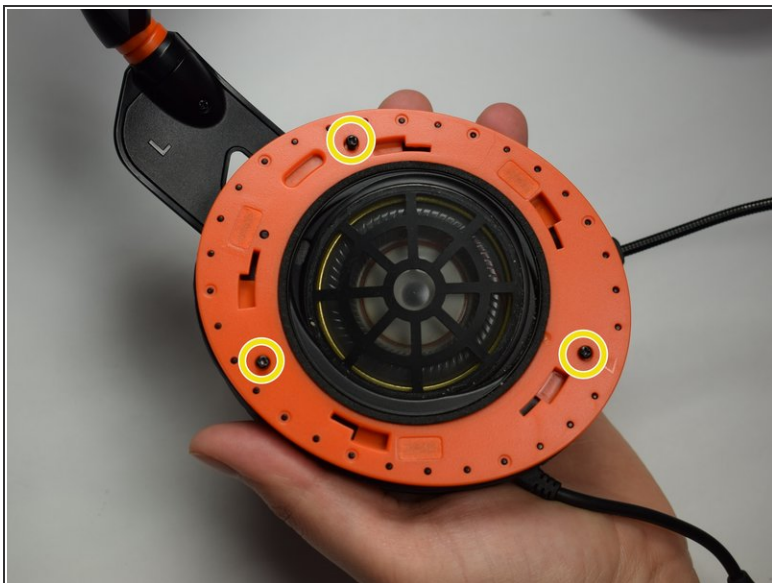
### Step 4 — Left Speaker



- Remove the left ear cushion completely from the headset.
- ⓘ The left ear cushion will be on the side of the headset where the microphone and audio control is attached.



## Step 5



- Using the Phillips #0 screwdriver, remove the 6.0 mm screws on the orange plate.

## Step 6



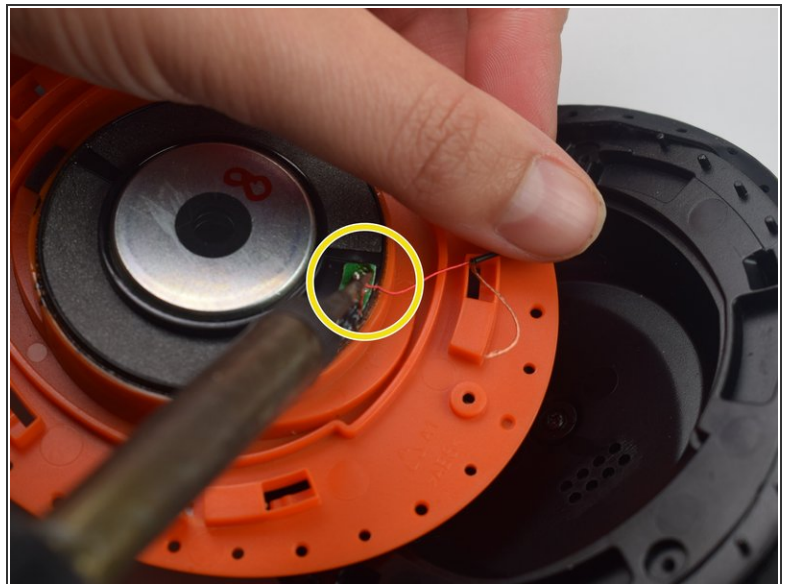
- Use the opening tool to separate the orange plate from the black base plate.
- Focus on the wires that are connected to the speaker.

## Step 7



- Using wire cutters, cut the two wires that are attached to the speaker.
- ⓘ Make sure to cut the wires as close to the speaker as possible, because these wires will be used in the next step.

## Step 8



- Replace the old speaker with the new speaker.
- Using the soldering iron, solder the wires to the new speaker.
- ⓘ Make sure to solder the wires to their original locations on the speaker.

To reassemble your device, follow these instructions in reverse order.