



Insignia NS-CSPBTHOL-R Buttons Replacement

This guide will address issues with the four large circular buttons on the top of the Insignia NS-CSPBTHOL-R.

Written By: Zachary Foltz



INTRODUCTION

This guide will show the steps to accessing the interior of the speaker to address problems with the main buttons not making contact with the motherboard.

TOOLS:

- [Heavy-Duty Spudger](#) (1)
 - [JIS Driver Set](#) (1)
-

Step 1 — Buttons



- Use the spudger to pry off the plastic grate covering the speakers, then gently pull it off with your fingers.

Step 2



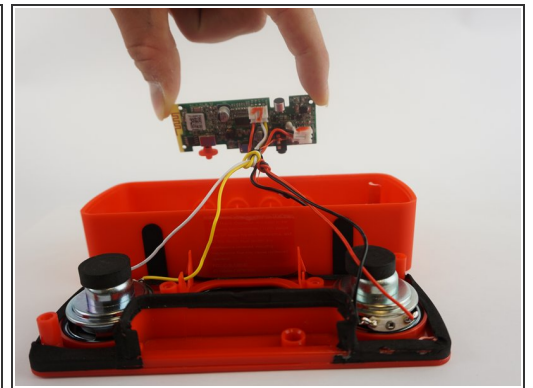
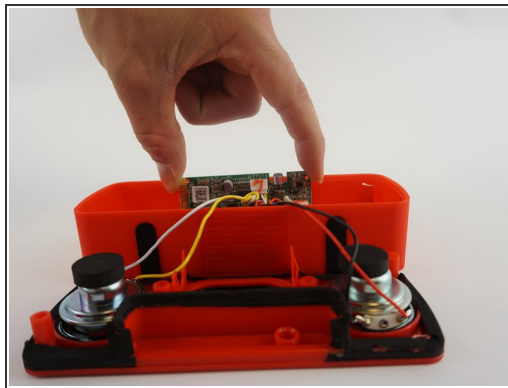
- once the grate has been removed, Remove the six 3mm screws using the J00 JIS screw bit. This will require a long, narrow screwdriver.

Step 3



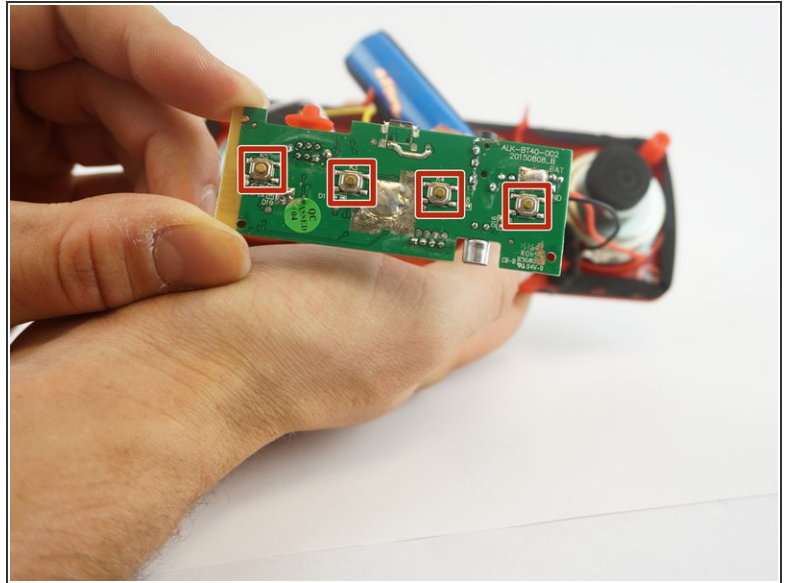
- Insert the Spudger between the corners of base and the face of the speaker to open the device. The screw on the upper right corner may be difficult to take out. If you cannot take it out with a screwdriver, using force to pull the face of the speaker apart may break the plastic that surrounds the screw.

Step 4



- Gently pull apart the speaker to separate the speakers from the battery and motherboard. Then pull out the motherboard with your fingers by grabbing the edges and pulling upwards.

Step 5



- Desolder the four contact points from the button that is unresponsive.

ⓘ Check out [this helpful guide](#) for soldering and desoldering tips.

To reassemble your device, follow these instructions in reverse order.