



# ThinkPad Edge E31 Wireless Card Replacement

Step by step guide to replacing you Edge 13 E31's wireless card

Written By: Riley



---

## INTRODUCTION

Your wireless card will allow you to connect to wireless networks. If it is not functioning, you may not be able to access the internet. This guide will show you how to replace it.

---



### TOOLS:

- [JIS Driver Set](#) (1)
-

## Step 1 — Battery



- There are two two locks for the battery, one on the left and one on the right.
- Slide the left lock to the left.

## Step 2



- Slide and hold the right battery lock to the right.
- While holding the right battery lock, slide the battery up to remove it from the laptop.



## Step 3 — ThinkPad Edge E31 Underside Disassembly



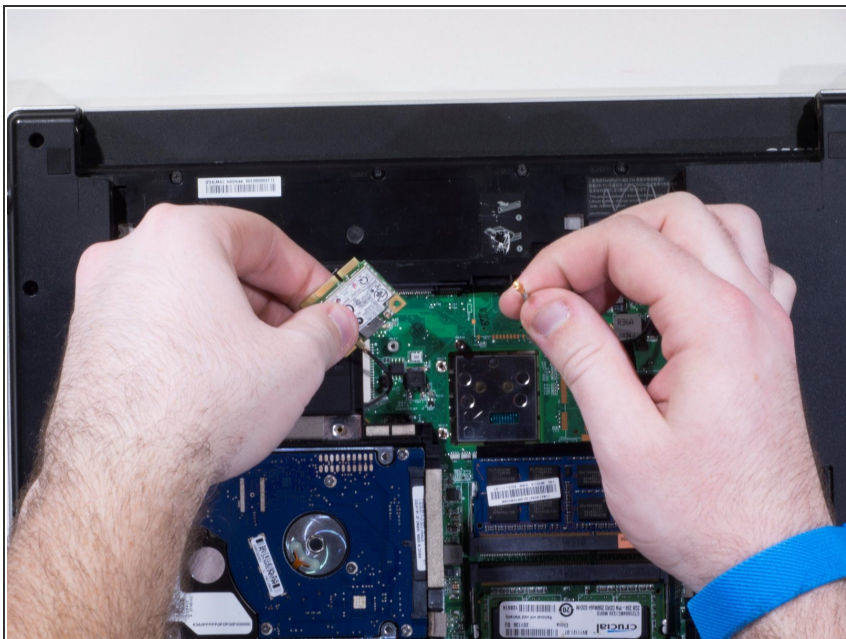
- i** The battery should be removed before accessing any internal components, and you should ground yourself before handling internal components.
- Unscrew the 5 screws holding the back on. These screws will unscrew from the laptop, but will remain secured to the back plate even when fully loosened. Once unscrewed, the plate can be removed.

## Step 4 — Wireless Card



- The wireless card is located above the Hard drive and RAM on the exposed laptop.
- There are 2, 4mm long M2 screws holding the wireless card to the laptop. Unscrew the screws.

## Step 5



- Once the screws are removed, there will be 2 wires attached to the card. These can be easily popped off by hand to fully disconnect the card from the laptop.

To reassemble your device, follow these instructions in reverse order.