



# Insignia NS-CSPBTHOL-R Speakers Replacement

If your speakers no longer sound strong/clear...

Written By: Lheessis Ruiz



## INTRODUCTION

If your speakers no longer sound strong/clear or they stopped producing sound, you may need to replace them. Use this guide to help you replace the speakers.

---

### **TOOLS:**

[Heavy-Duty Spudger](#) (1)

[JIS Driver Set](#) (1)

---

## Step 1 — Speakers



- Insert the Spudger between the grated panel and the base of the speaker.

## Step 2



- Pull the grated panel off

## Step 3



- Remove the six 3mm screws using the J00 JIS screw bit. This will require a long, narrow screwdriver.

## Step 4



- Insert the Spudger between the corners of base and the face of the speaker to open the device.
- The screw on the upper right corner may be difficult to take out. If you cannot take it out with a screwdriver, using force to pull the face of the speaker apart may break the plastic that surrounds the screw.

## Step 5



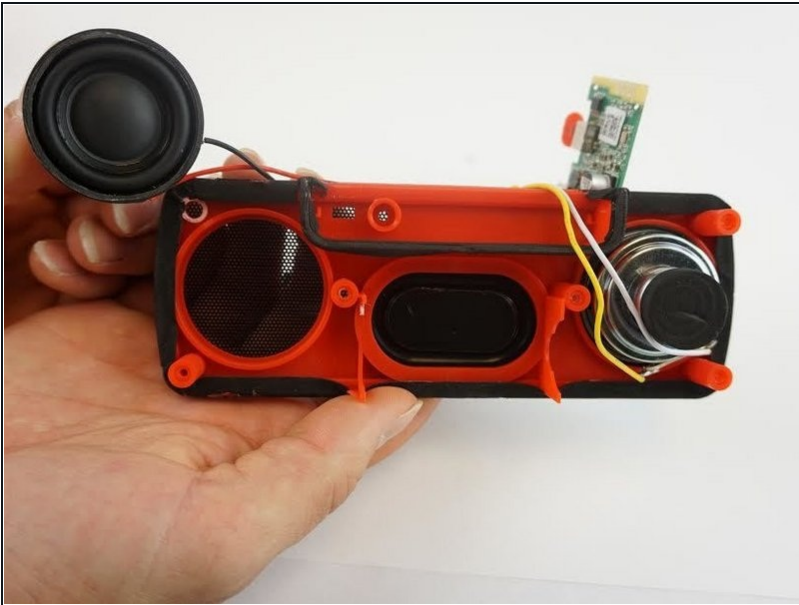
- Remove one speaker at a time

## Step 6



- Grab the back piece of the speaker and gently pull upward.

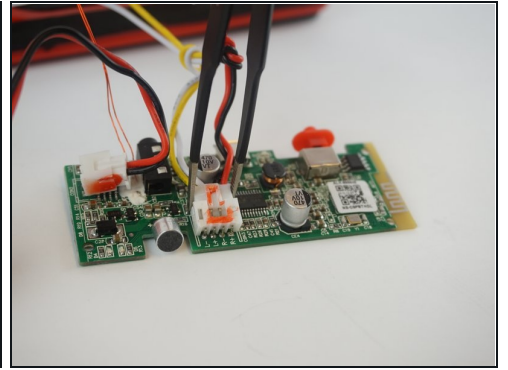
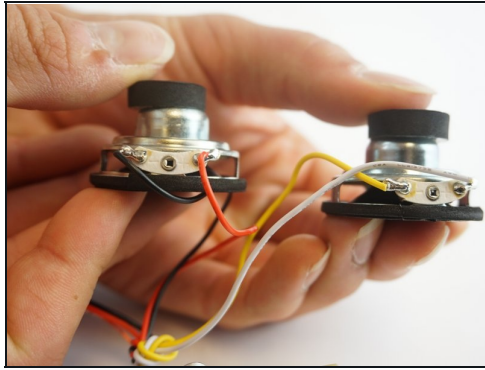
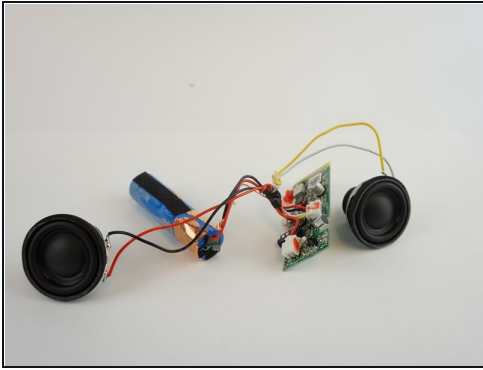
## Step 7



- Remove speakers gently one at a time.



## Step 8



- Using blunted tip [tweezers](#), squeeze and pull on the white plastic clip. This will separate the speaker's wires from the motherboard.
  - ① The wires are connected to the white plastic clip that is attached to the motherboard.
- 

To reassemble your device, follow these instructions in reverse order.