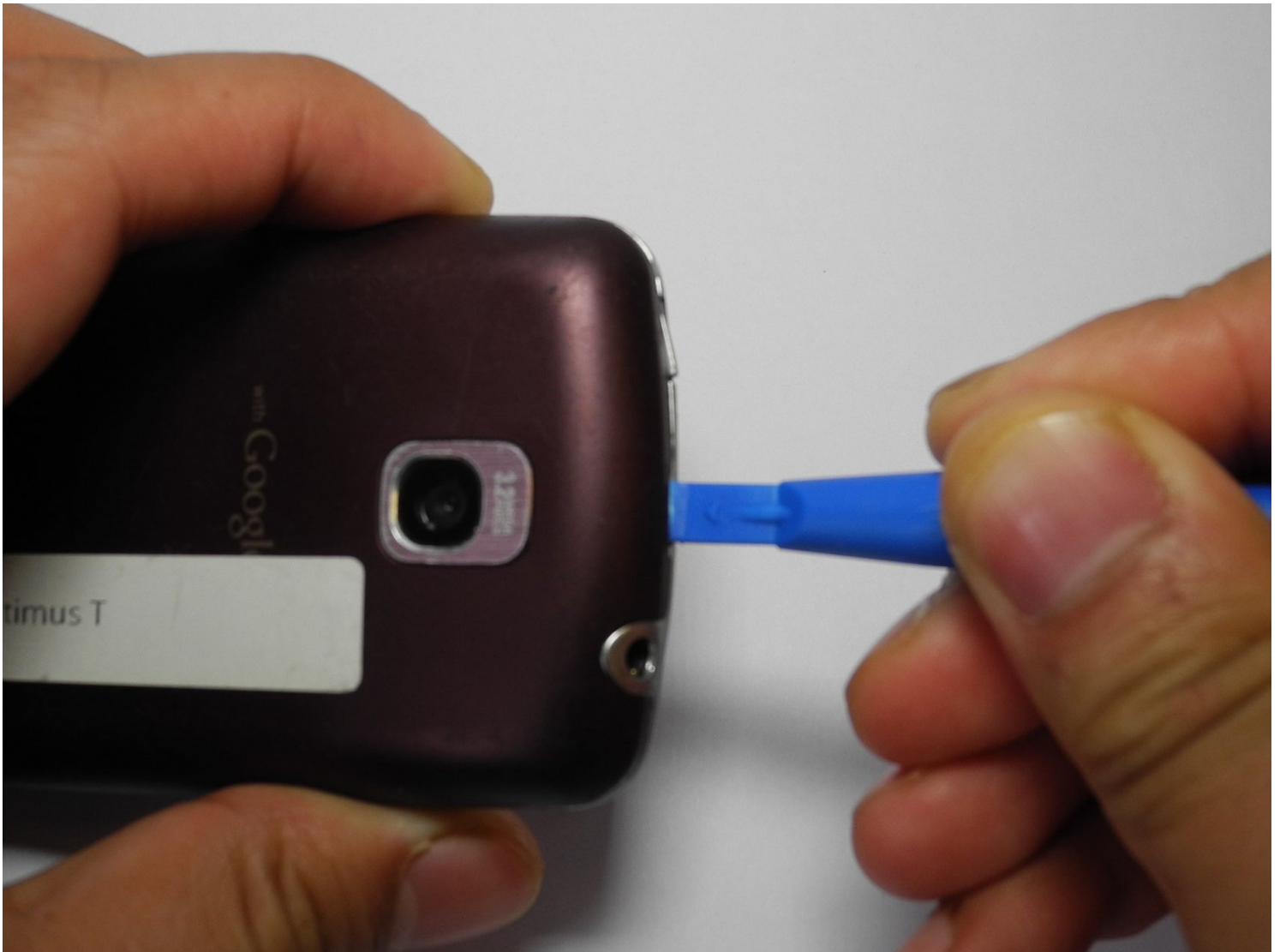




LG Optimus T Camera and Camera Mount Replacement

This guide will show you step by step...

Written By: stacey



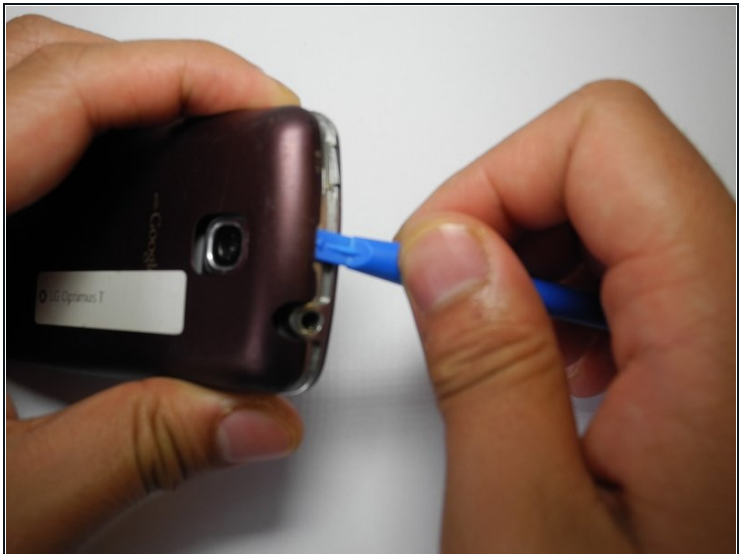
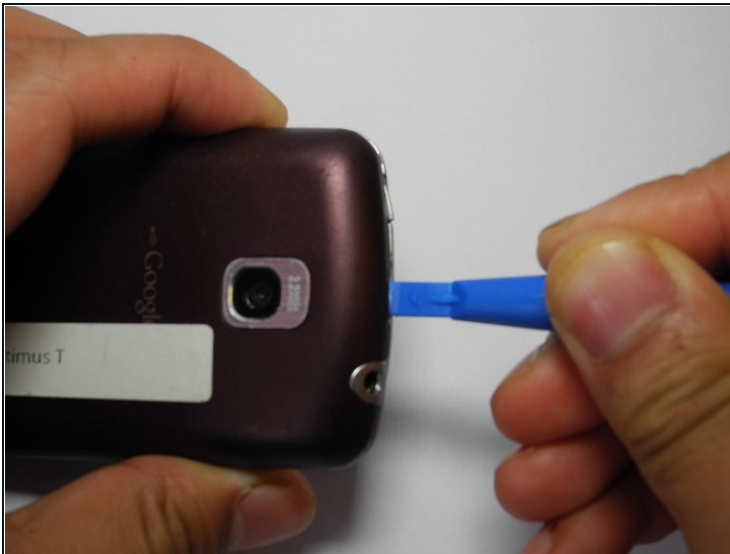
INTRODUCTION

This guide will show you step by step instructions on how to replace the camera on your LG Optimus T.

TOOLS:

[Metal Spudger](#) (1)
[Tweezers](#) (1)
[JIS Driver Set](#) (1)
[iFixit Opening Tool](#) (1)

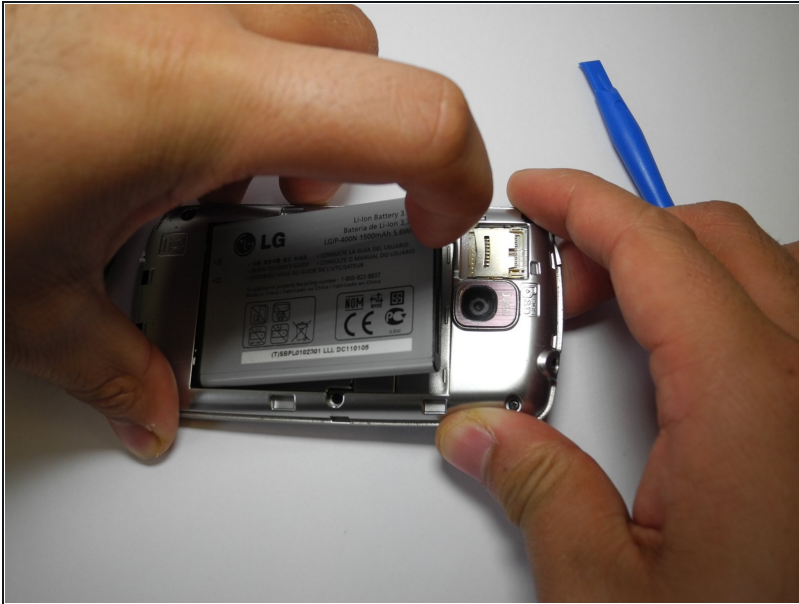
Step 1 — Camera



 Working on your device while it is turned on may result in electric shock. Make sure to shut down your device before you begin.

- Use a plastic opening tool to remove the phone's back cover. At the top of the phone there are indentations to insert the spudger and pop the case off

Step 2



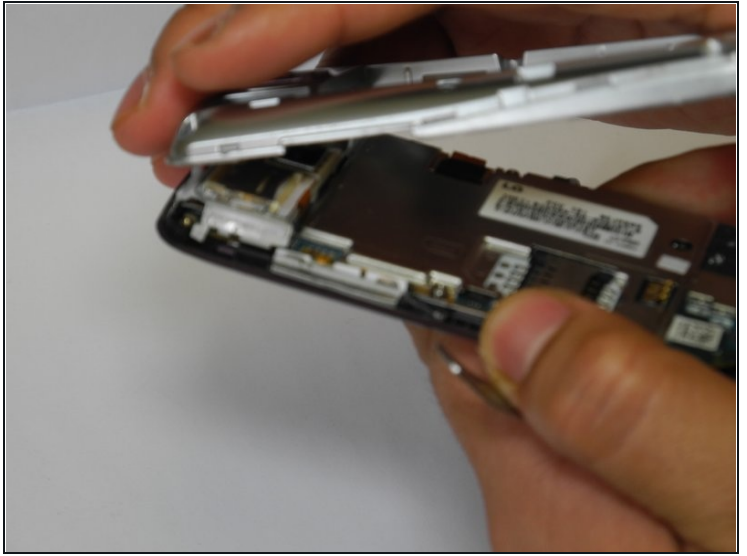
- Remove the battery by pulling up on the battery using the indentation to the left of the camera lens

Step 3



- Use a J0 screwdriver to remove the 6 highlighted screws

Step 4



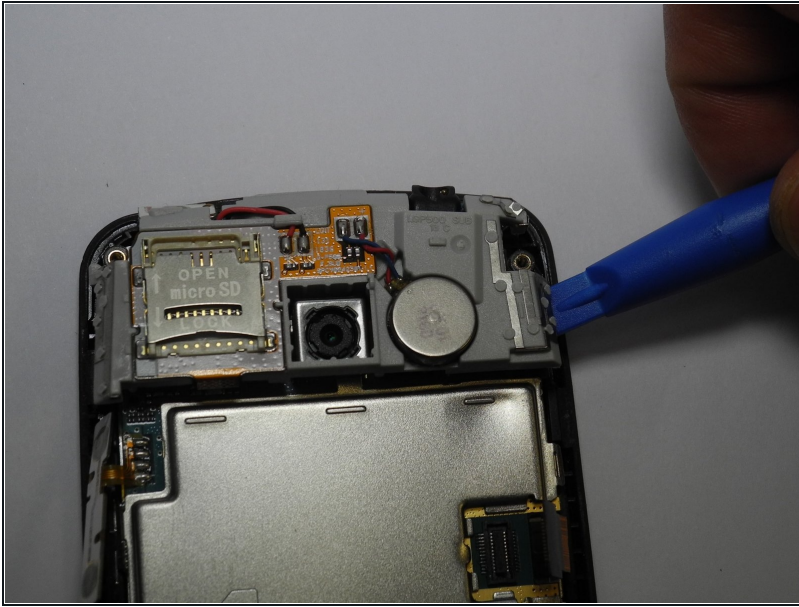
- Remove interior case using indentations on the top and bottom to insert the spudger to pop off the interior case
- ① You might have difficulty popping the interior case off. You may use the metal spudger here with caution if the plastic one fails

Step 5



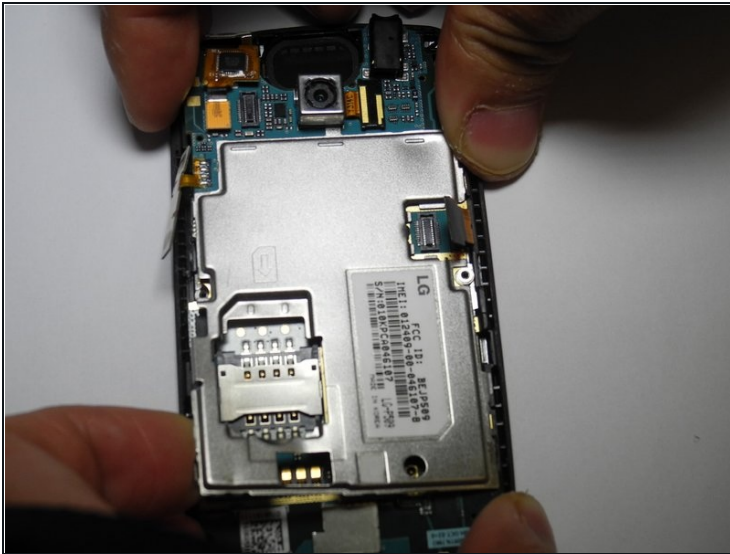
- Unhook the connector tab

Step 6



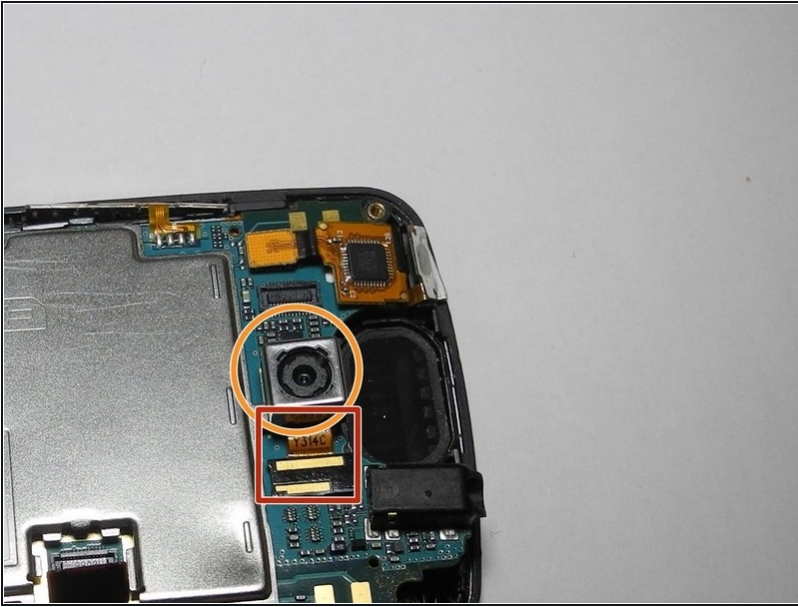
- Remove SD card mount by inserting the plastic opening tool on the right side of the device to pop mount off

Step 7



- Remove metal panel by inserting plastic opening tool into the four retaining points and remove panel

Step 8



- disconnect camera connector from motherboard by spudger
- Once disconnected, remove camera using [tweezers](#)

To reassemble your device, follow these instructions in reverse order.