



# Bem Wireless HL2739B Speaker Replacement

This guide is to instruct users how to remove and replace the speaker in the Bem Wireless HL2739B Speaker.

Written By: Ryan McQueeney



---

# INTRODUCTION

Actions speak louder than words especially when your speaker's broken. Speak up and follow this guide.

---



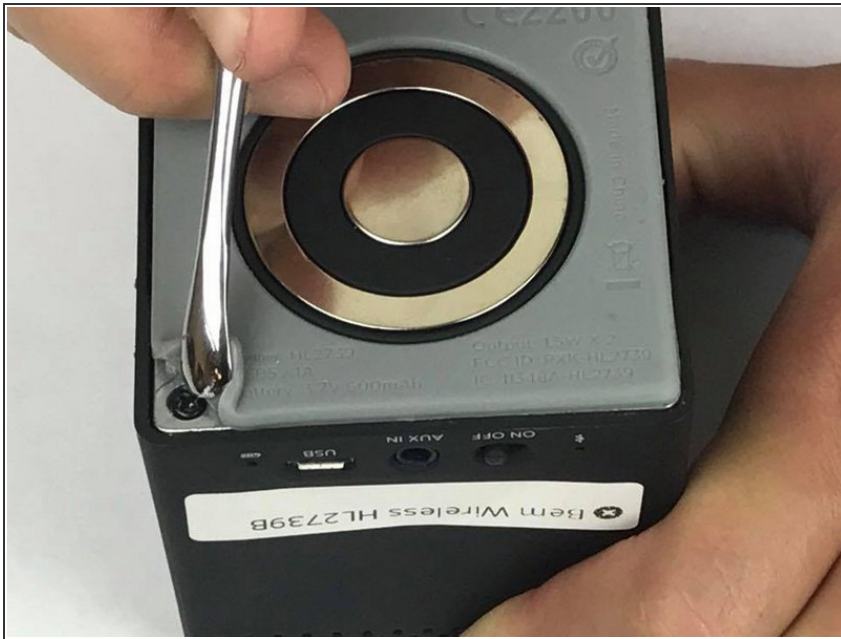
## TOOLS:

- [Metal Spudger](#) (1)
- [Tweezers](#) (1)

Flat

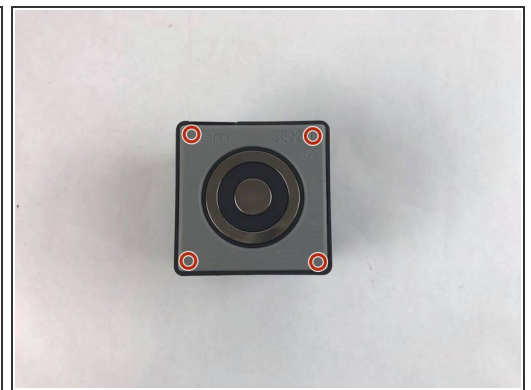
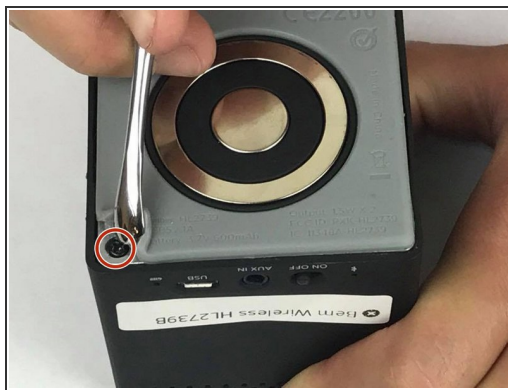
- [iFixit Opening Tools](#) (1)
  - [J1 Screwdriver Bit](#) (1)
-

## Step 1 — Speaker Battery



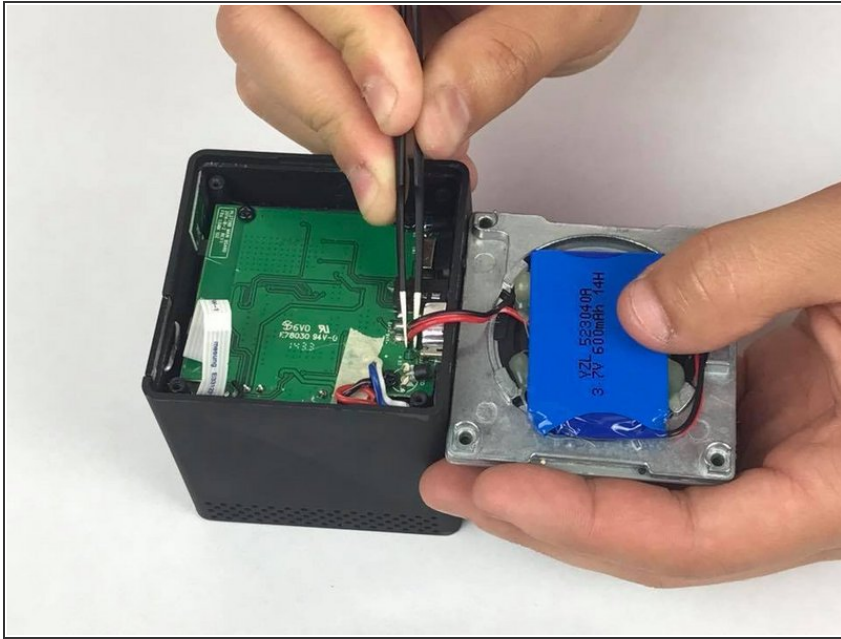
- Peel the rubber cover back from the corner of the speaker to reveal the screw.
- Repeat for the three remaining corners.

## Step 2



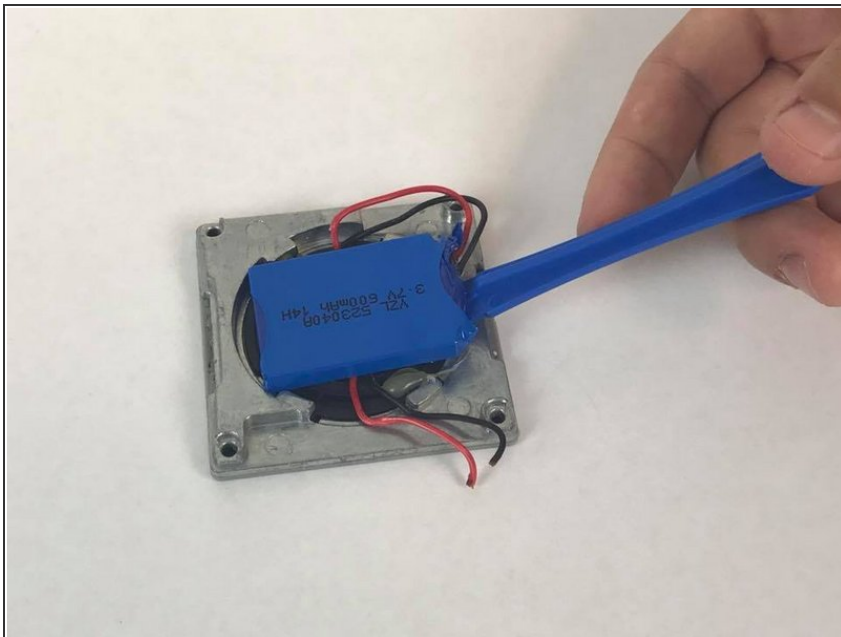
- Use the J1 bit attached to the screwdriver to remove the four 10mm screws from the bottom of the speaker.

### Step 3



- Lift the bottom cover away from the rest of the speaker.
- ⚠ There are wires connecting the battery and cover to the rest of the speaker. Be careful when removing the base cover.
- Using the tweezers, pull the wires from the speaker's internal chip.
- ⚠ Be careful not to damage the chip when you remove the wires.
- ⓘ It will likely require soldering to reassemble the speaker after this step.

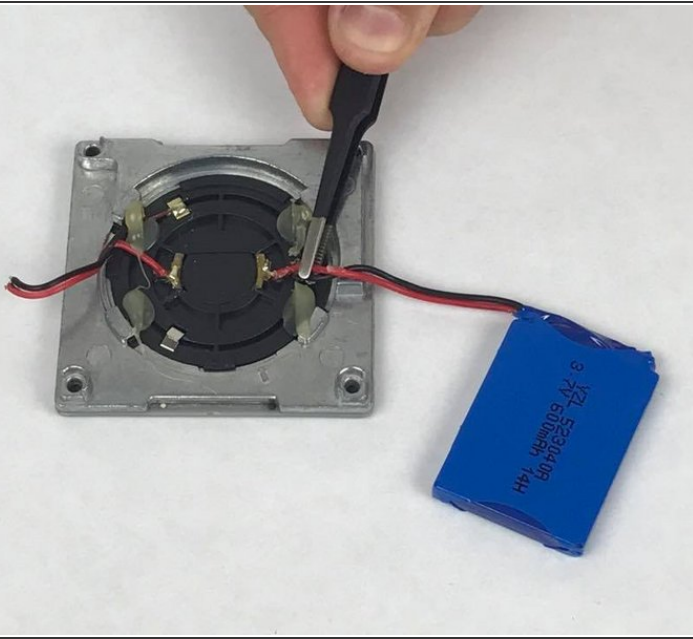
### Step 4



- Using a plastic opening tool, gently pry the battery from the metal base.



## Step 5



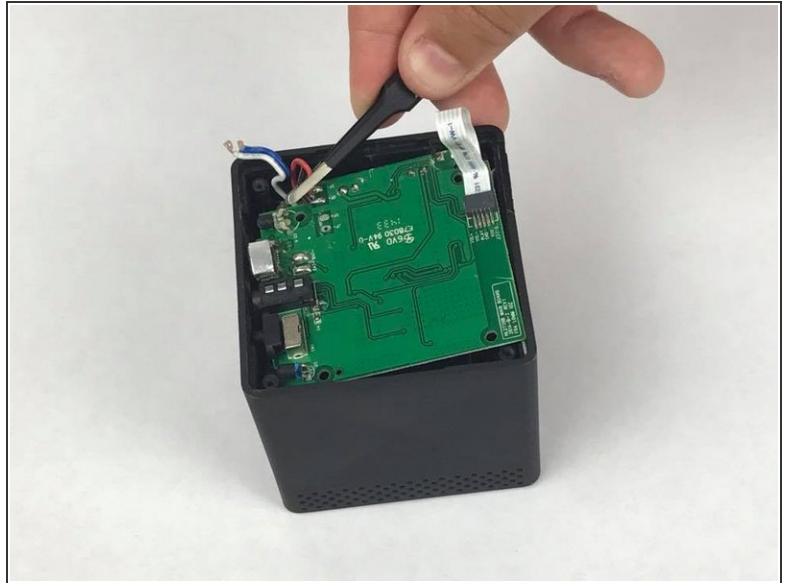
- Using tweezers, pull the wires from the metal base connection.

## Step 6 — Speaker Motherboard



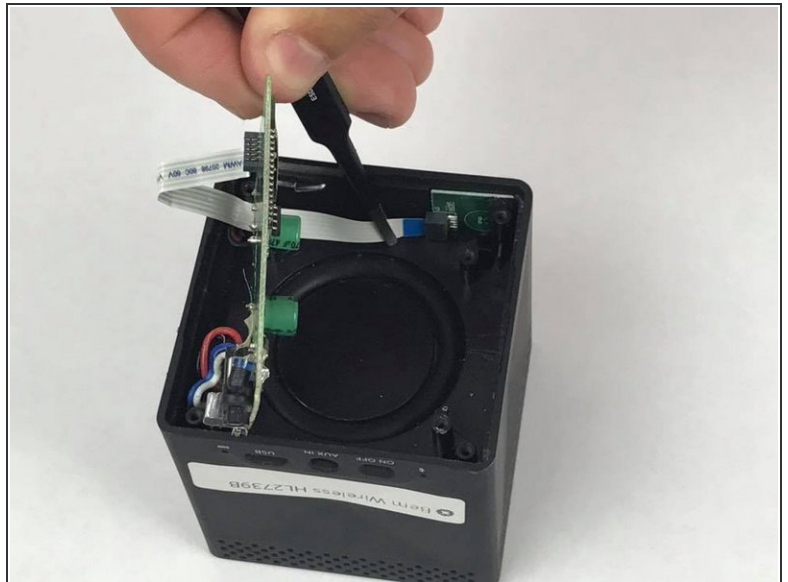
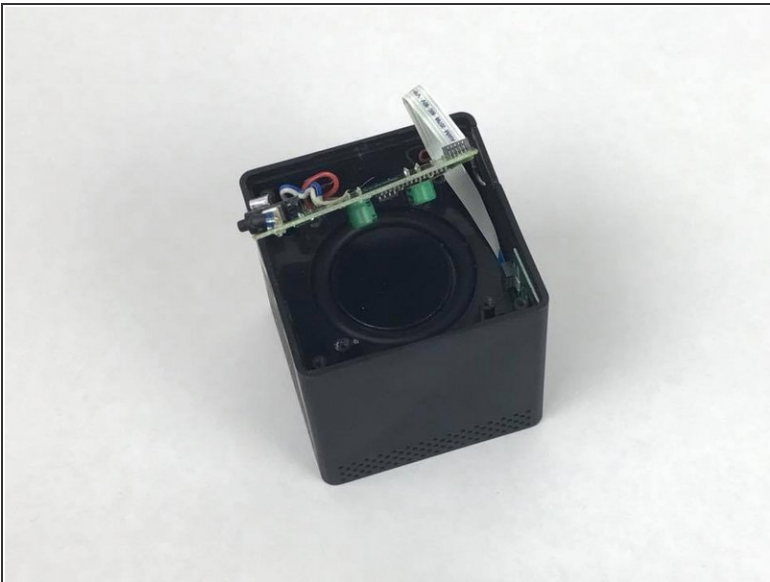
- Unscrew the four 10mm screws from the motherboard.

## Step 7



- Using tweezers, remove the blue/white and red/black wires from motherboard.

## Step 8



⚠ Gently re-position the motherboard so you can access the bus wire connected to the speaker.

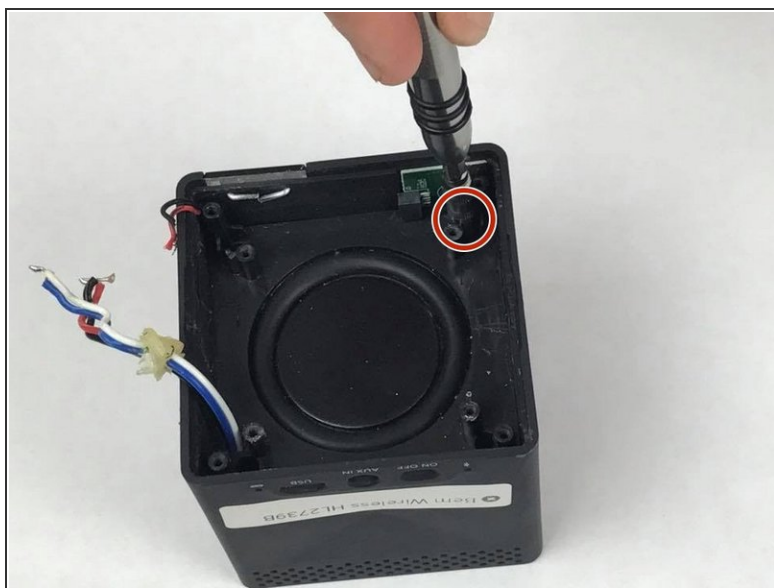
- Remove bus wire from the speaker and lift out the motherboard.

## Step 9 — Speaker



- Using tweezers remove excess glue that may be covering the screw holes of the speaker's driver.

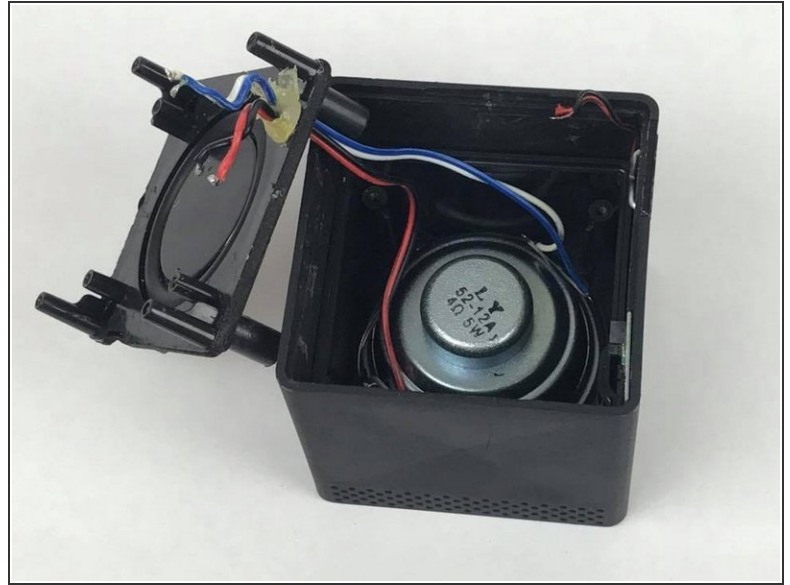
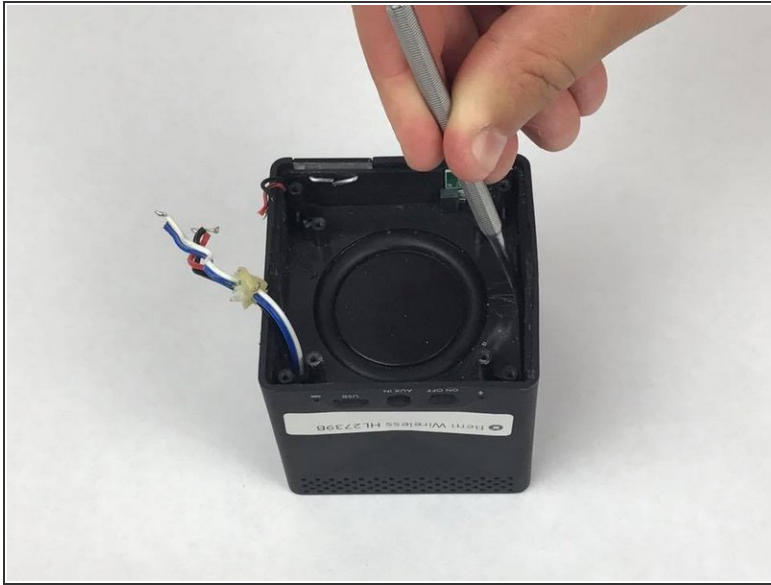
## Step 10



- Remove the four 10mm screws from speaker's base.



## Step 11



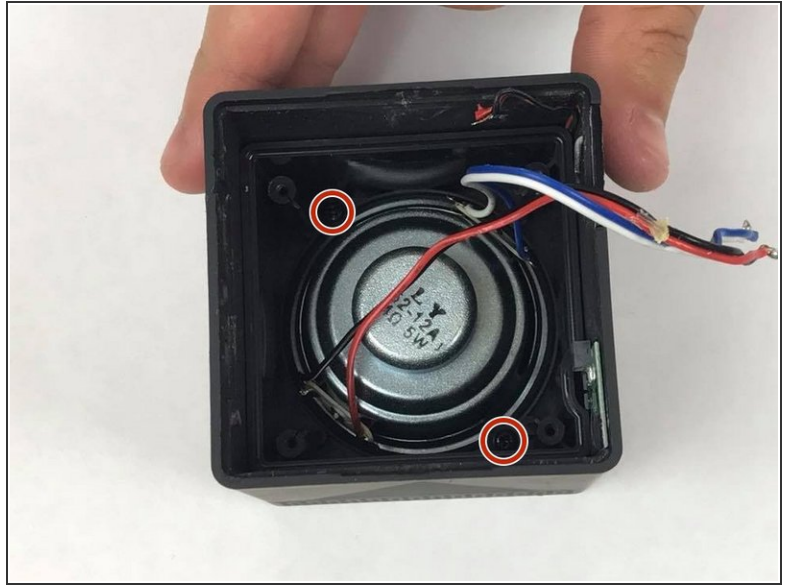
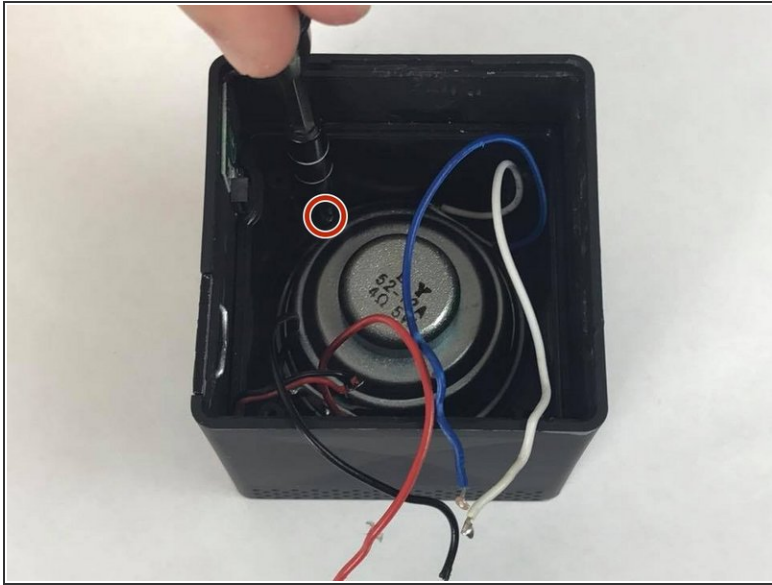
- Using the metal spudger, pry up on the speaker's base.

⚠ This will require a moderate amount of force.

- Pull the wire from the speaker's driver's base from the hole it was in.



## Step 12



- Remove the two 5mm screws from the speaker.
- Lift the driver from the speaker.

To reassemble your device, follow these instructions in reverse order.