



Bem Wireless HL2739B Charging base motherboard Replacement

This guide is to instruct users how to remove and replace the motherboard in the Bem Wireless HL2739B charging base.

Written By: Ryan McQueeney



INTRODUCTION

Is your charging base not functioning correctly? It's probably the motherboard.



TOOLS:

- [iFixit Opening Tools](#) (1)
 - [Tweezers](#) (1)
 - [Metal Spudger](#) (1)
 - [J1 Screwdriver Bit](#) (1)
-

Step 1 — Charging Base Battery



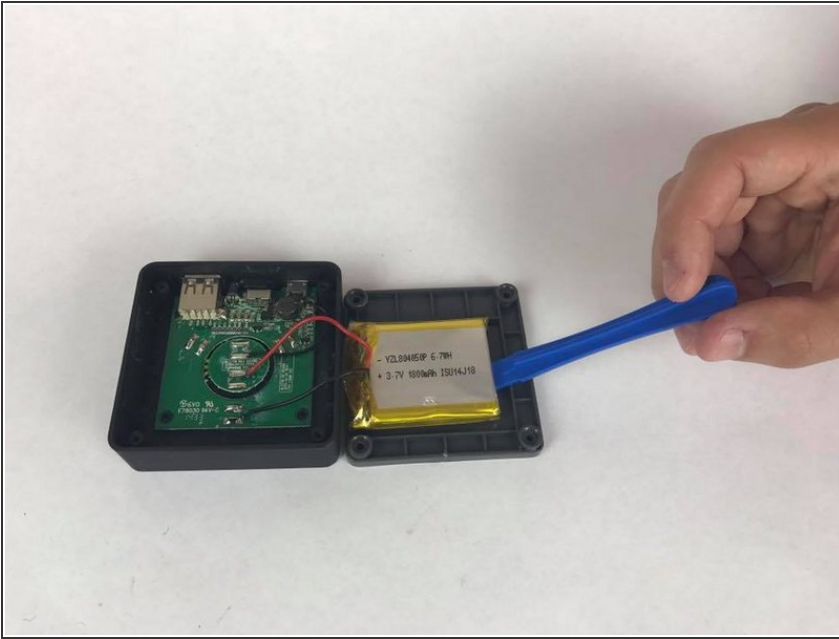
- Peel the rubber cover back from the corner of the auxiliary charging base to reveal the screw.

Step 2



- Use the J1 bit attached to the screwdriver to remove the four 10mm screws from the bottom of the auxiliary charging base.

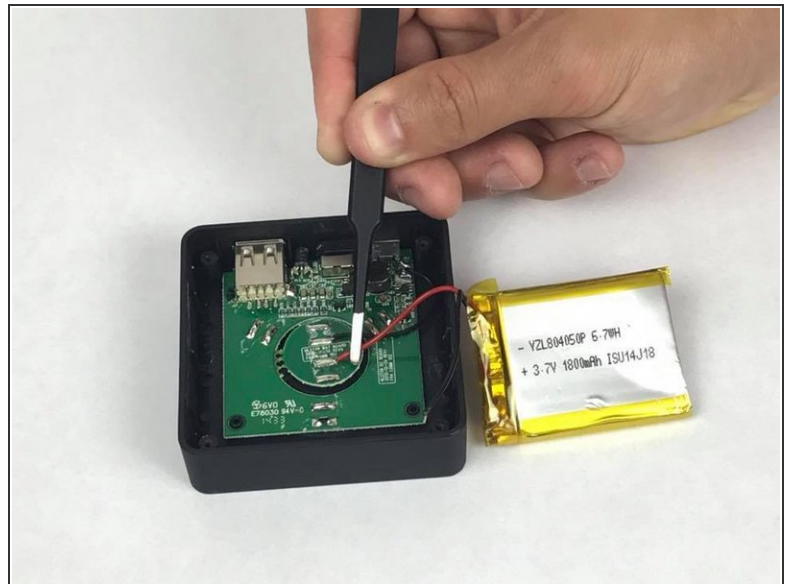
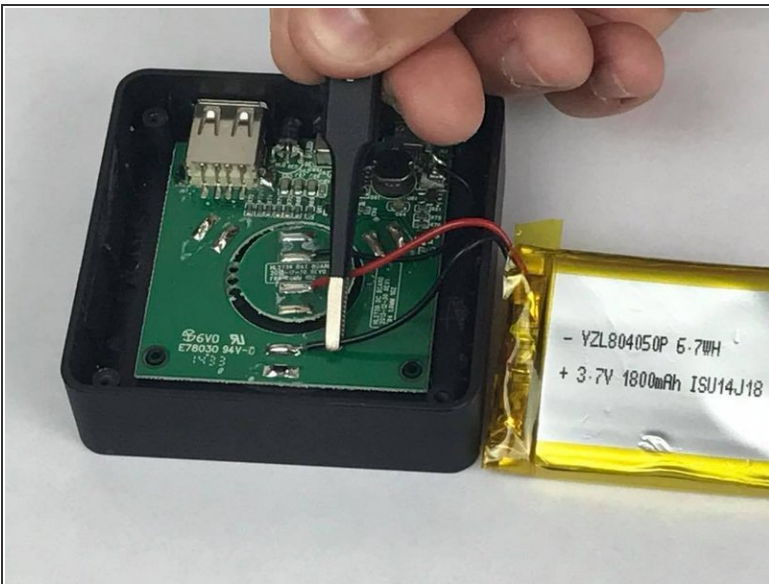
Step 3



- Lift the bottom cover away from the rest of the auxiliary charging base.

⚠ There are wires connecting the battery and cover to the rest of the auxiliary charging base. Be careful when removing the auxiliary charging base cover.

Step 4



- Using the tweezers, pull the wires from the auxiliary charging base's internal chip.

⚠ Be careful not to damage the chip when you remove the wires.

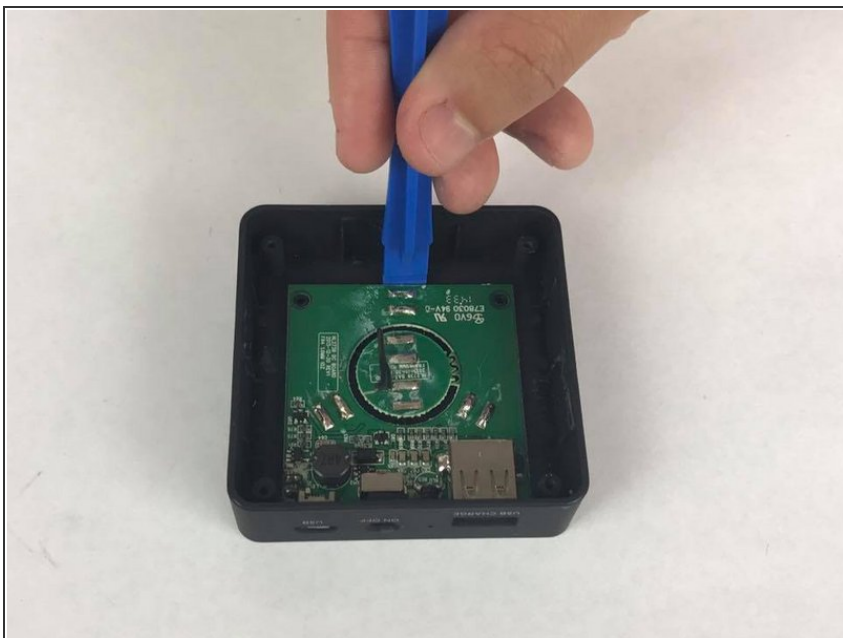
i It will likely require soldering to reassemble the auxiliary charging base after this step.

Step 5 — Charging Base Motherboard



- Using tweezers, remove the black wire from the motherboard

Step 6



- Using the plastic opening tool, gently pry the motherboard up and remove it from the charging base.
- ⓘ There are no screws to be removed from the motherboard.

To reassemble your device, follow these instructions in reverse order.