



Fujifilm Finepix S1800 Shutter Button Replacement

Is the button to take a photo on your Fujifilm...

Written By: Ryan Rockford



INTRODUCTION

Is the button to take a photo on your Fujifilm Finepix S1800 jammed or broken? This guide will show you step by step on how to replace the jammed or broken button.

TOOLS:

[JIS Driver Set](#) (1)

[iFixit Opening Tool](#) (1)

[Phillips #000 Screwdriver](#) (1)

Step 1 — Back Cover Assembly



- Unscrew the four 4mm screws on the left-hand side of the camera with the JIS #1 screwdriver.

Step 2



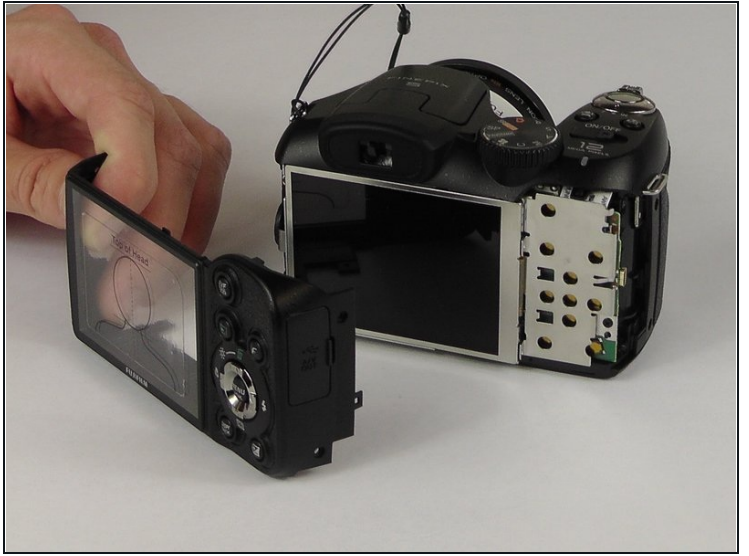
- Unscrew the four 4mm screws on the right-hand side of the camera with the JIS #1 screwdriver.

Step 3



- Unscrew the three 4mm screws on the bottom of the camera with the JIS #1 screwdriver.

Step 4



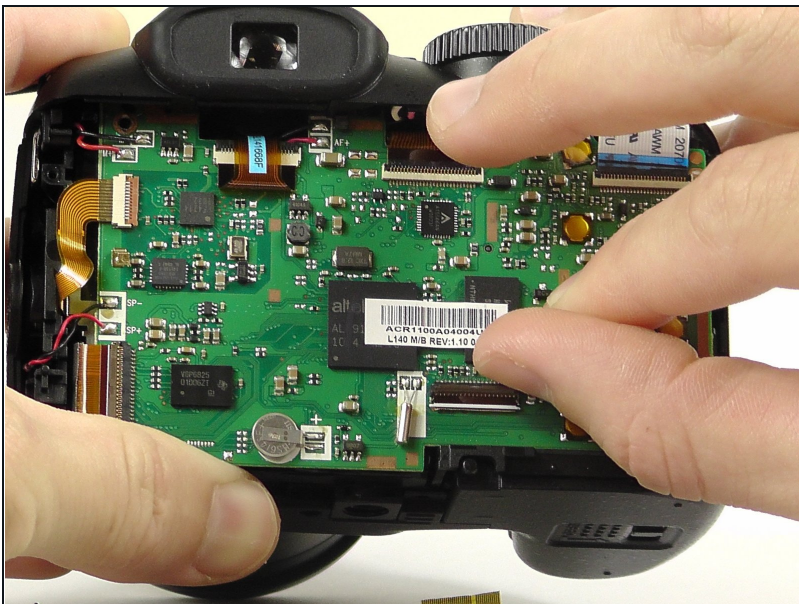
- Take the plastic opening tool and place it in the space between the top of the screen and the top of the camera.
- The cover will pop out.
- ① You may have to work the back cover from different sides to get it to pop off.

Step 5 — LCD Screen



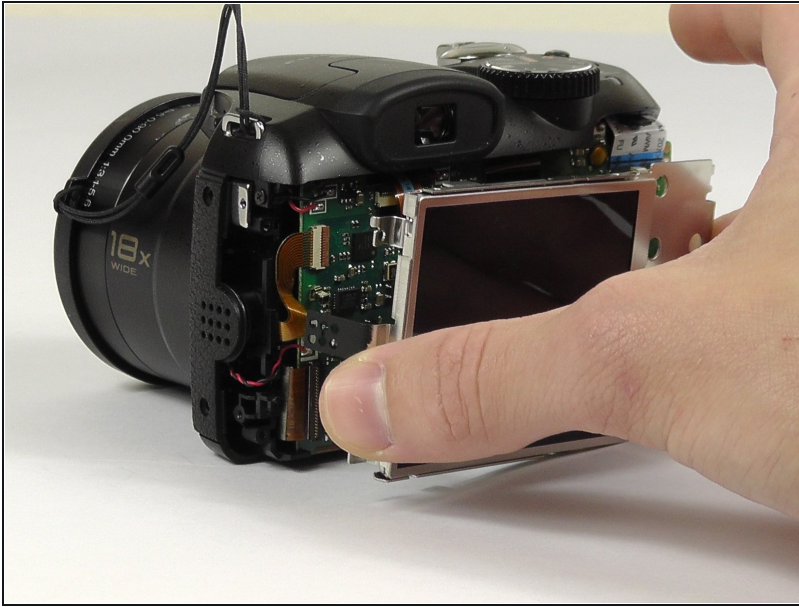
- Remove the three 2 mm screws from the back cover plate with the Phillips #000 screwdriver.
- Gently lift the back cover away from the device.
⚠ Do not pull or yank free. The LCD screen is connected to the motherboard via a small ribbon cable.

Step 6



- Move the lever to disconnect the ribbon cable from the circuit board.
⚠ Do not rip the fragile micro ribbon cable.

Step 7



- Gently remove the LCD screen.
⚠ **Do not** touch the screen directly.

Step 8 — Top Cover



- Lift the flash.
- Remove the two 4 mm screws from the top of the camera with the JIS #1 screwdriver.

Step 9



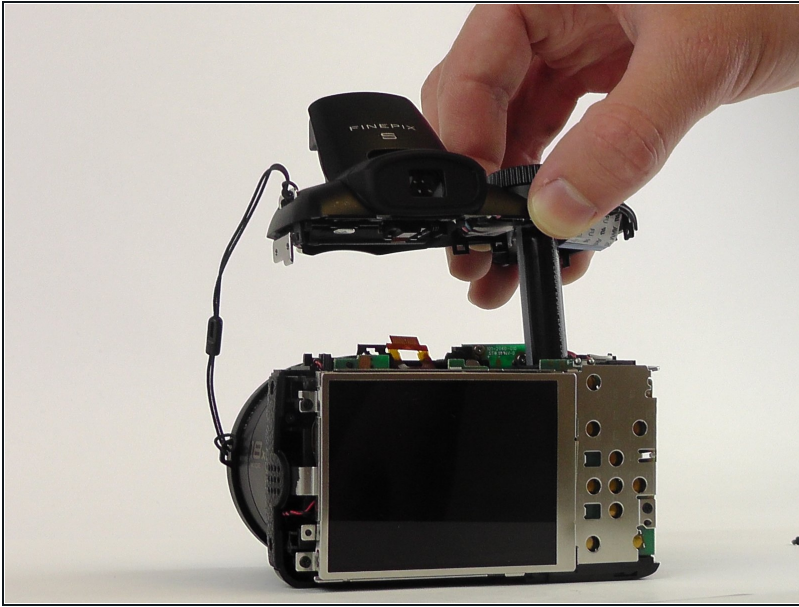
- Remove the 4 mm screws from the left and right sides of the camera with the JIS #1 screwdriver.

Step 10



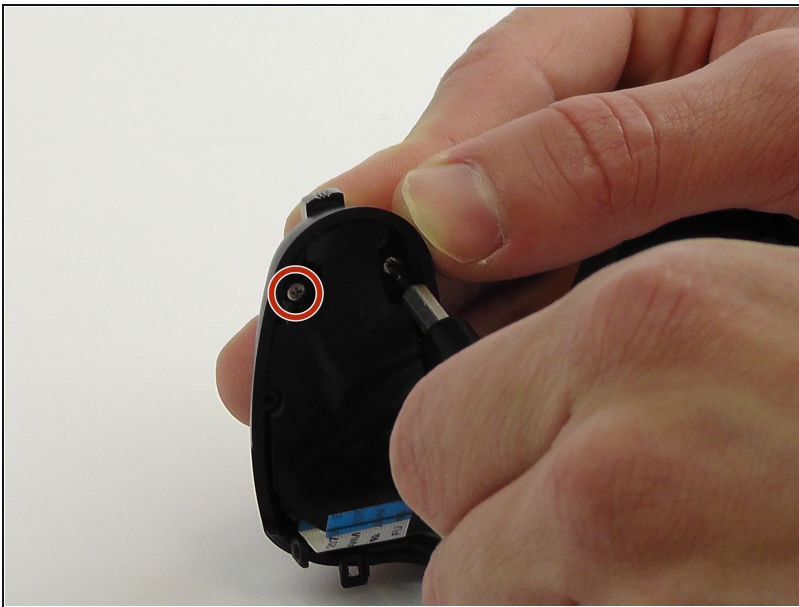
- Switch the lever to disconnect the micro strip that connects the top plate.
⚠ **Do not** rip the micro strip.

Step 11



- Remove the top cover.

Step 12 — Shutter Button



- Remove the two 2 mm screws underneath the plate with the Phillips #000 screwdriver.

Step 13



- The button should fall right out.

To reassemble your device, follow these instructions in reverse order.