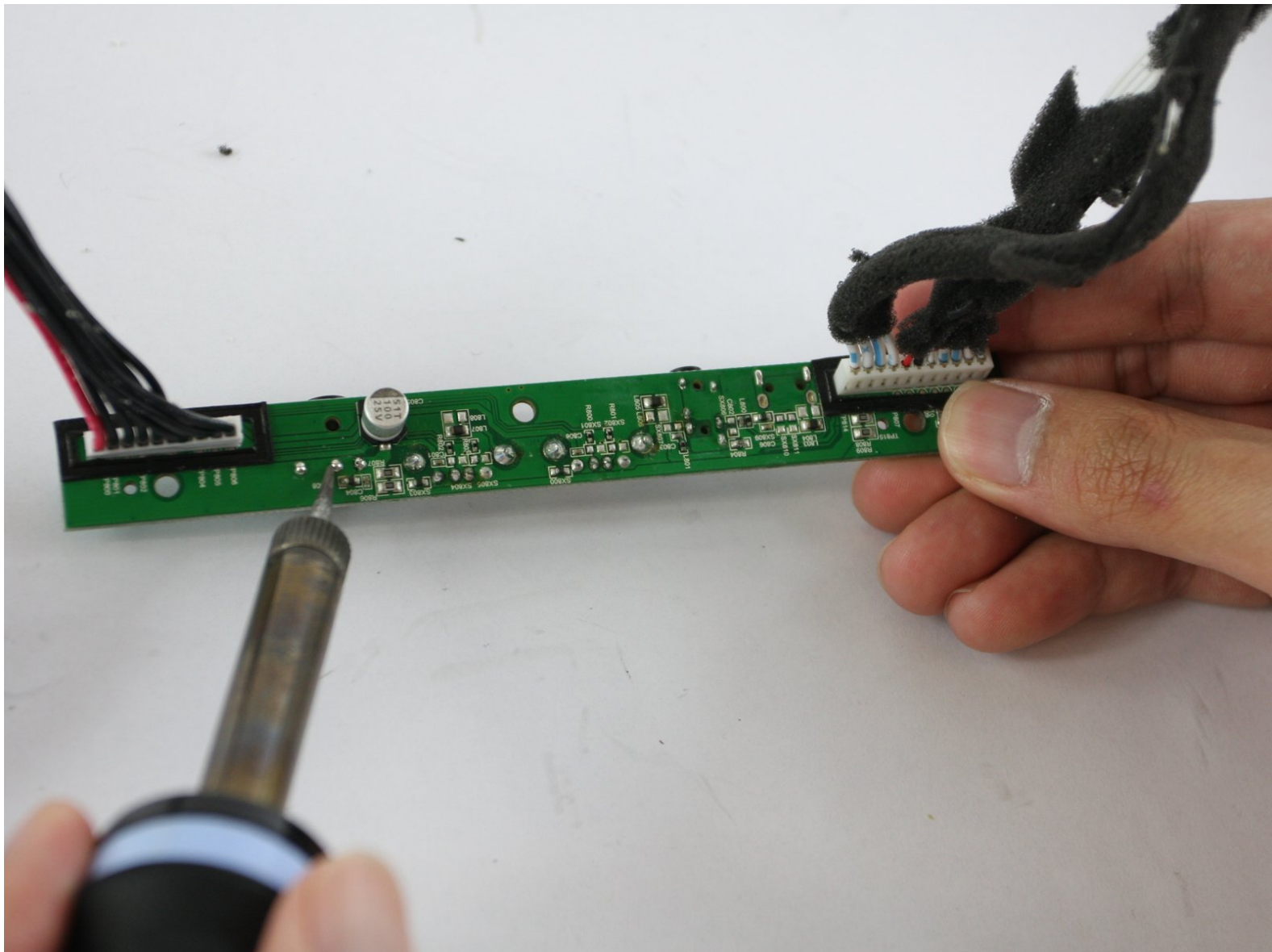




JBL Xtreme Charging Port Replacement

This guide will show you how to remove the charging port of a JBL Xtreme.

Written By: Benny Huynh



INTRODUCTION

This guide will show you how to remove the charging port of a JBL Xtreme. This guide requires [soldering skills](#).

TOOLS:

- [Phillips #1 Screwdriver](#) (1)
 - [Metal Spudger](#) (1)
 - [Soldering Iron](#) (1)
 - [Tweezers](#) (1)
 - [Magnetic Project Mat](#) (1)
-

Step 1 — Cover



- Locate the seams next to the 'feet' on the bottom side of the device.

Step 2



- Use the metal spudger to gently pry and lift the edge of the seam. The cover is held in place with plastic snaps that will make a popping noise when disengaged. !!Start with the back half, this will expose TWO Screws that need to be removed before lifting the front half.

Step 3



- For the first part of the case: gently pull back the edges of the case rotating along the hinge opposite the opening seam illustrated in the second photo. Plastic snaps hold the cover in place.
- For the second part of the case: there are 2 screws to be removed at the seam. Once removed, the case will come off completely without forcing.

Step 4 — Bass Radiator



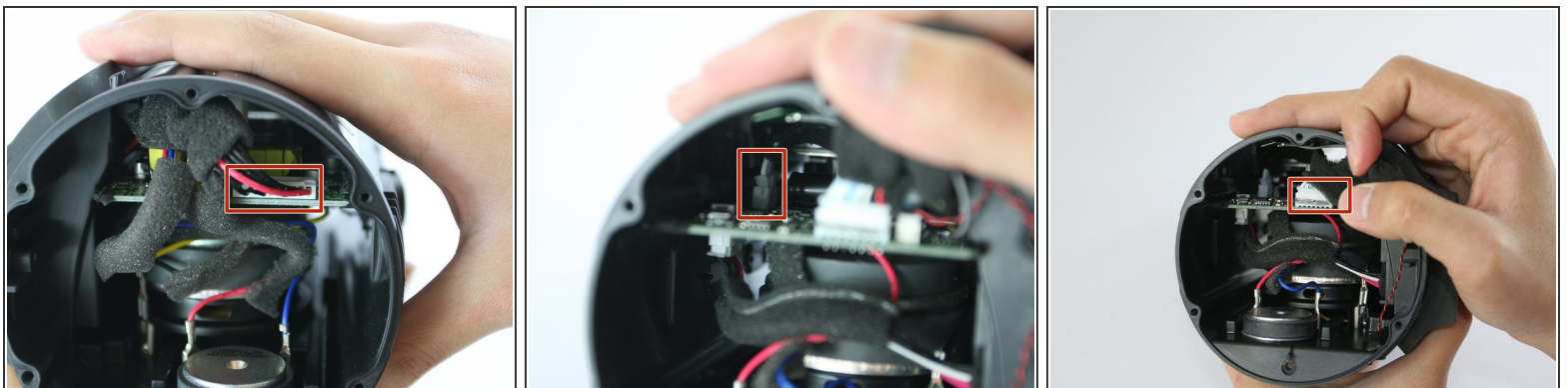
- Unscrew the six 9.75mm Phillips head screws holding the bass radiator in place.
- ⓘ Three of the five outer screws are indicated in the first image and the sixth inner screw is indicated in the second image.

Step 5



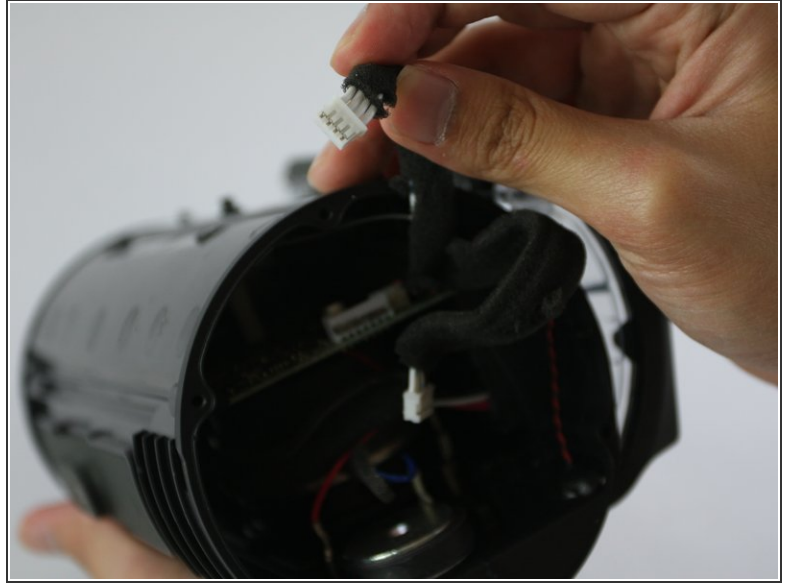
- Once the screws have been removed, the bass radiator will easily lift free.
- ⓘ Both radiators are identical. Repeat the above steps on the opposite radiator if necessary.

Step 6 — Charging Port



- Locate and disconnect the the three plugs indicated in these pictures.

Step 7



- Unplug the three ports from the previous step.
- ⓘ A set of tweezers may be helpful to reach deeper into the device.

Step 8



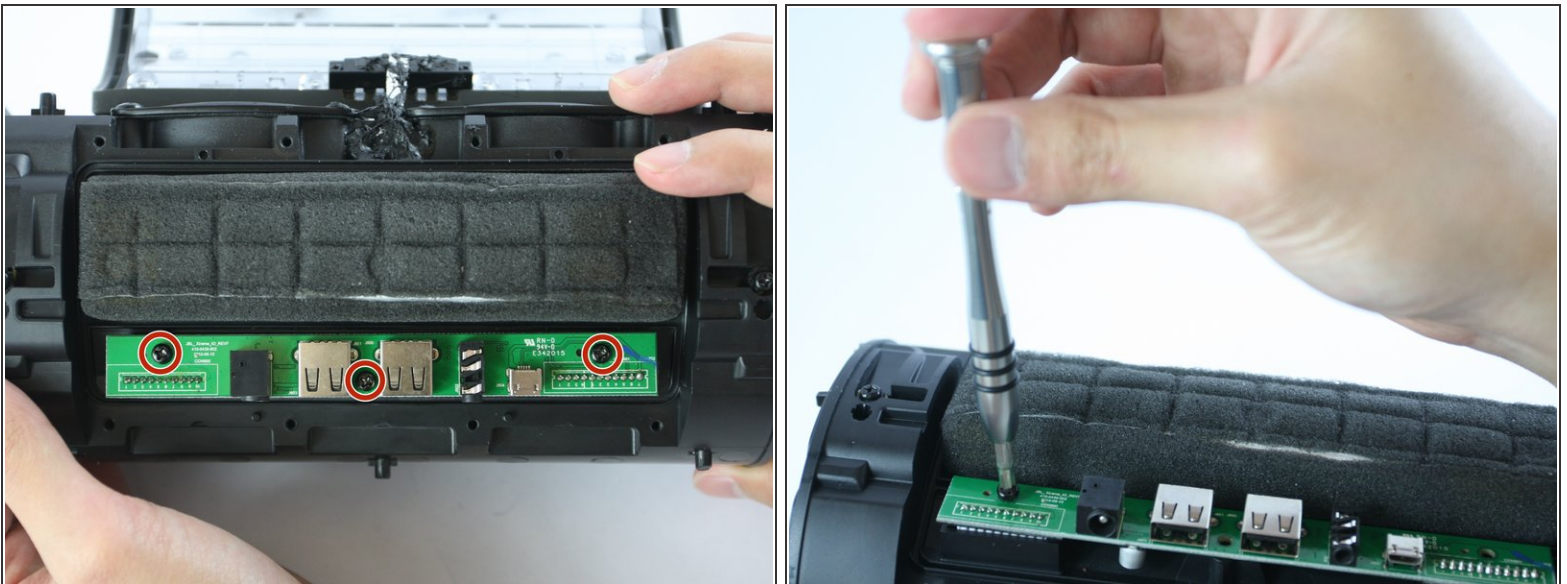
- Locate the three Phillips head screws inside the zipper compartment and unscrew them.
- Pull the zipper panel free from the device.

Step 9



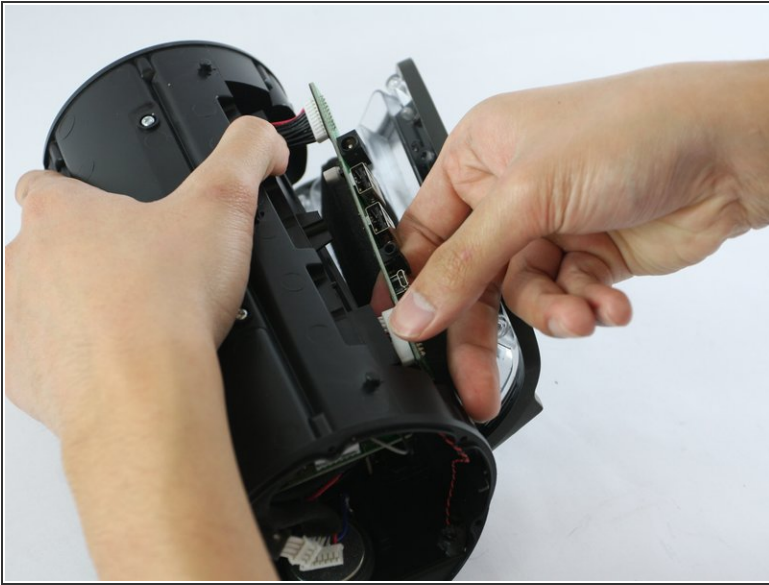
- Under the zipper panel are eight more Phillips head screws. Unscrew them and carefully lift the battery cover.
- ⓘ Be careful not to damage the small white ribbon cable which connects the battery cover to the rest of the device.

Step 10



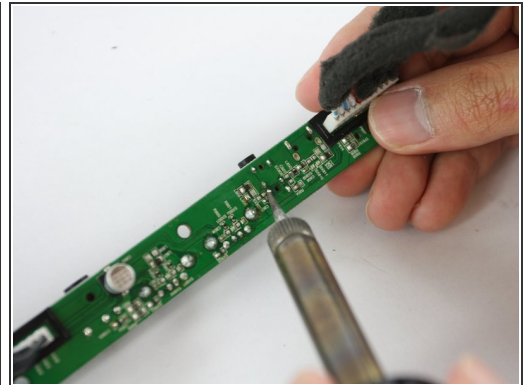
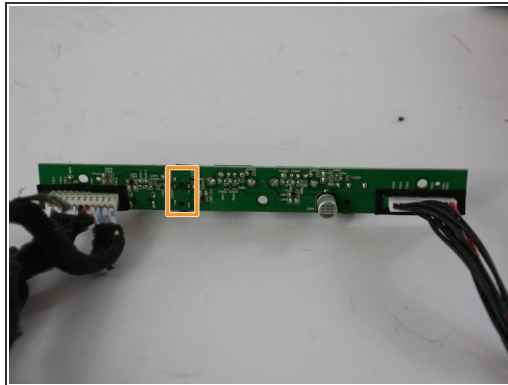
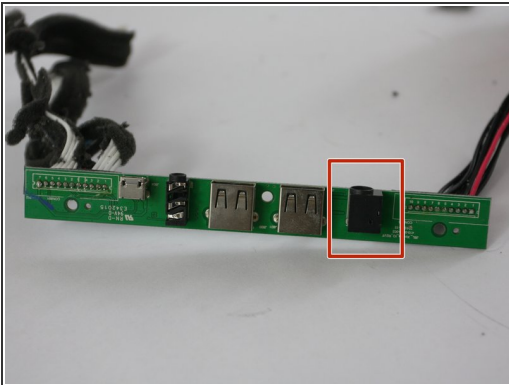
- Unscrew the three 11.88mm Phillips head screws highlighted in the picture.

Step 11



- Pull the Auxiliary board out.
- ⓘ There is foam covering the wires, making it difficult to remove the Auxiliary board. Take your time with this step.

Step 12



- The first image highlights the charging port.
- Locate 6 metal pins highlighted in the second image and use a solder iron to disconnect the pins.

To reassemble your device, follow these instructions in reverse order.