



Fujifilm Finepix S1800 Top Cover Replacement

Is the flash not flipping up on your Fujifilm...

Written By: Ryan Rockford



INTRODUCTION

Is the flash not flipping up on your Fujifilm Finepix S1800 camera? It might be time to replace the top cover plate. This guide will show you how to replace the top cover.

TOOLS:

[iFixit Opening Tool](#) (1)

[JIS Driver Set](#) (1)

[Phillips #000 Screwdriver](#) (1)

Step 1 — Back Cover Assembly



- Unscrew the four 4mm screws on the left-hand side of the camera with the JIS #1 screwdriver.

Step 2



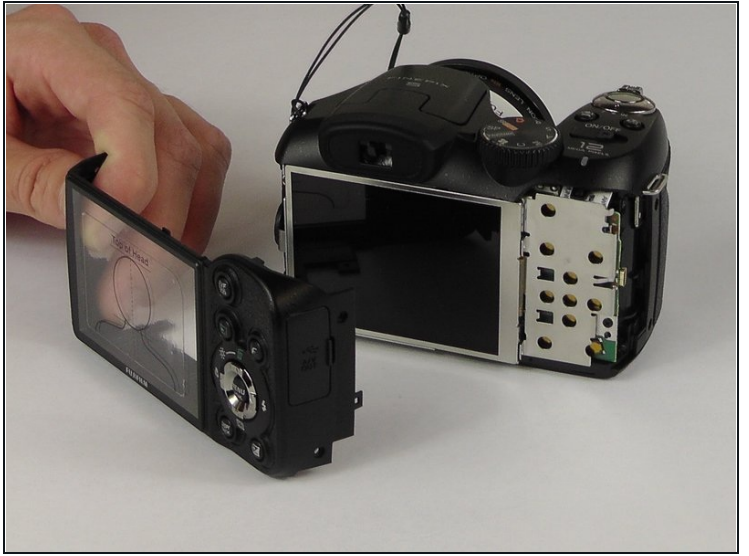
- Unscrew the four 4mm screws on the right-hand side of the camera with the JIS #1 screwdriver.

Step 3



- Unscrew the three 4mm screws on the bottom of the camera with the JIS #1 screwdriver.

Step 4



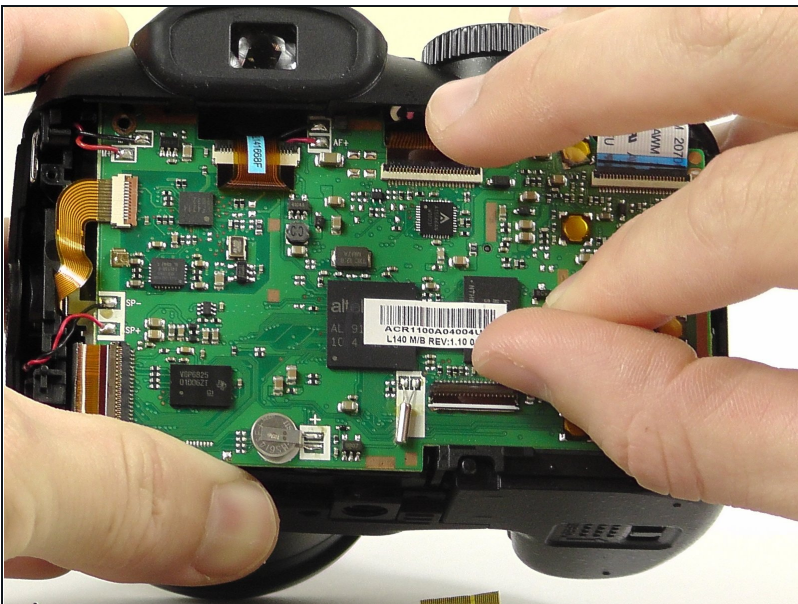
- Take the plastic opening tool and place it in the space between the top of the screen and the top of the camera.
- The cover will pop out.
- ① You may have to work the back cover from different sides to get it to pop off.

Step 5 — LCD Screen



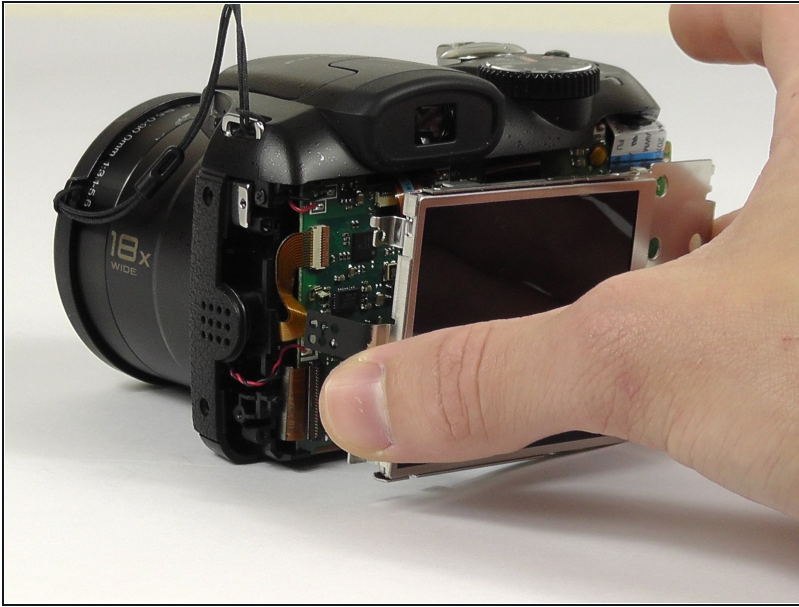
- Remove the three 2 mm screws from the back cover plate with the Phillips #000 screwdriver.
- Gently lift the back cover away from the device.
⚠ Do not pull or yank free. The LCD screen is connected to the motherboard via a small ribbon cable.

Step 6



- Move the lever to disconnect the ribbon cable from the circuit board.
⚠ Do not rip the fragile micro ribbon cable.

Step 7



- Gently remove the LCD screen.
⚠ **Do not** touch the screen directly.

Step 8 — Top Cover



- Lift the flash.
- Remove the two 4 mm screws from the top of the camera with the JIS #1 screwdriver.

Step 9



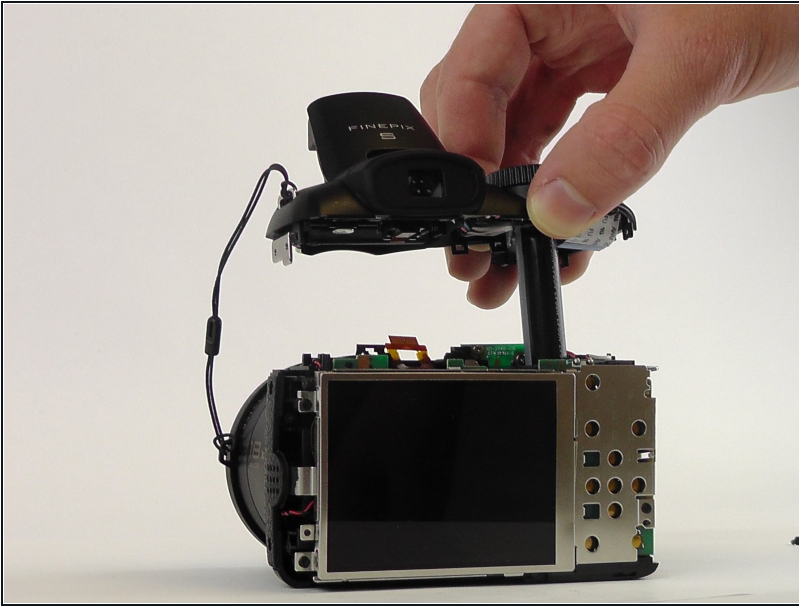
- Remove the 4 mm screws from the left and right sides of the camera with the JIS #1 screwdriver.

Step 10



- Switch the lever to disconnect the micro strip that connects the top plate.
⚠ **Do not** rip the micro strip.

Step 11



- Remove the top cover.

To reassemble your device, follow these instructions in reverse order.