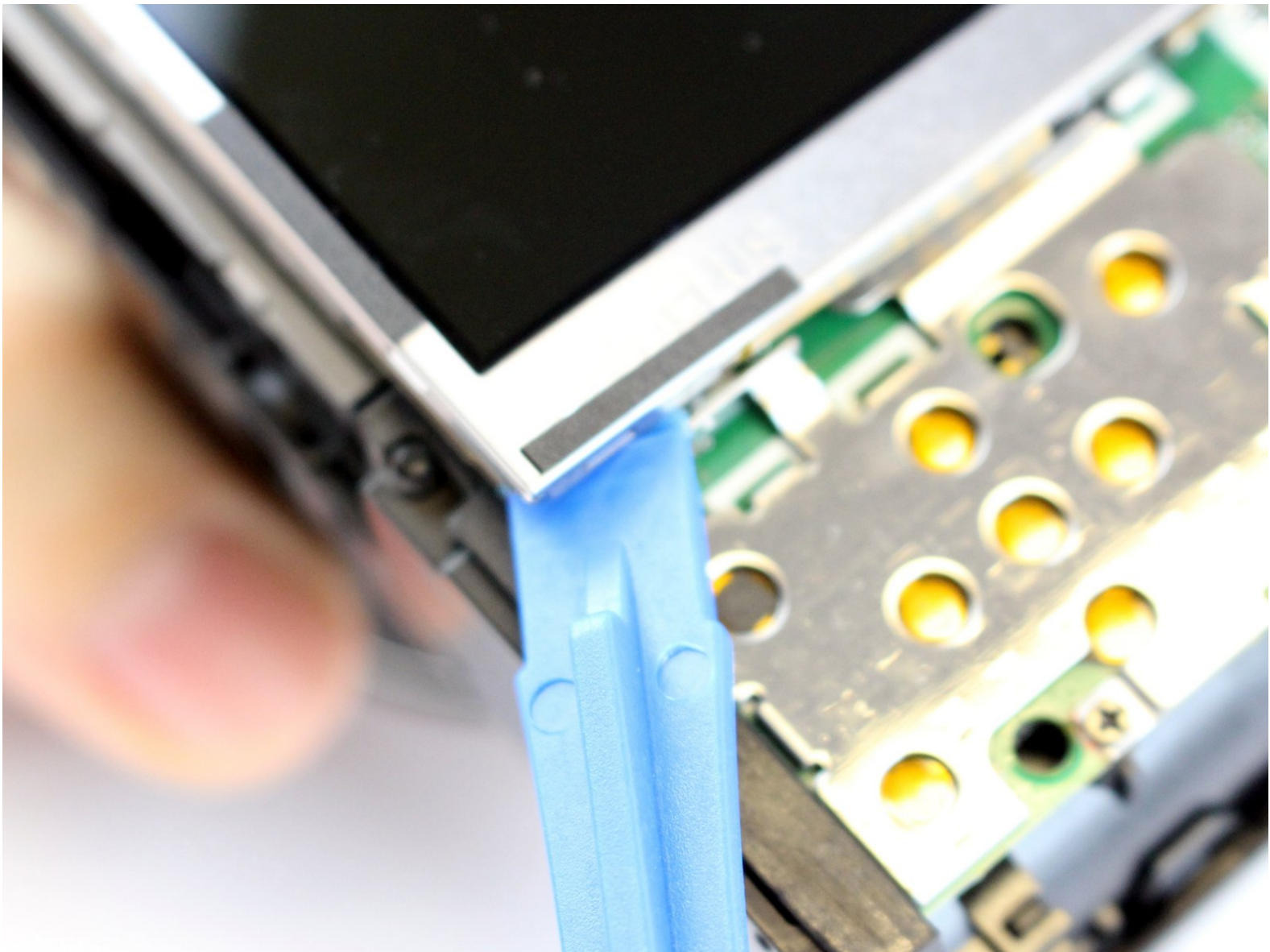




# Fujifilm FinePix S4800 LCD Screen Replacement

This guide helps users to remove and replace the LCD screen on this camera model. The LCD is located on the side that is opposite of the camera's lens.

Written By: Stephen Calabrese



---

## INTRODUCTION

In this guide, we will be taking apart the Fujifilm FinePix S4800 to remove and replace the LCD screen. This involves taking off the rear plastic case of the camera by removing screws and using a plastic removal tool to separate the rear case from the rest of the camera. Then, only one ZIF connector stands between you and a new LCD screen.



### TOOLS:

- [iFixit Opening Tools](#) (1)
  - [Spudger](#) (1)
  - [JIS Driver Set](#) (1)
-

## Step 1 — Battery



- ❗ Make sure that the camera is powered off before continuing.
- Rotate the camera so that the label on the base of the camera is facing up.
- On the battery compartment door, there is a slider that says "open". Slide it down and push the door to the right to release the door.

## Step 2



- Remove all four batteries and set them aside.
- ★ When replacing the batteries, be sure to note the markings on the face of the battery compartment. These markings let you know which side of the battery ("+" or "-") needs to be facing up in each slot.

## Step 3 — Rear Case



- Remove the three 5.0 mm JIS #000 screws on the bottom of the camera.

## Step 4



- Rotate the camera so that the HDMI port is facing up.
- Remove the two 5.0 mm JIS #000 screws.



## Step 5



- Rotate the camera so that the text "30x superwide 24-720mm" is facing up.
- Remove the two 5.0 mm JIS #000 screws.

## Step 6




- Press the pop-up button highlighted in the picture to release the flash mechanism.
- Remove the two 5.0 mm JIS #000 screws highlighted in the picture.

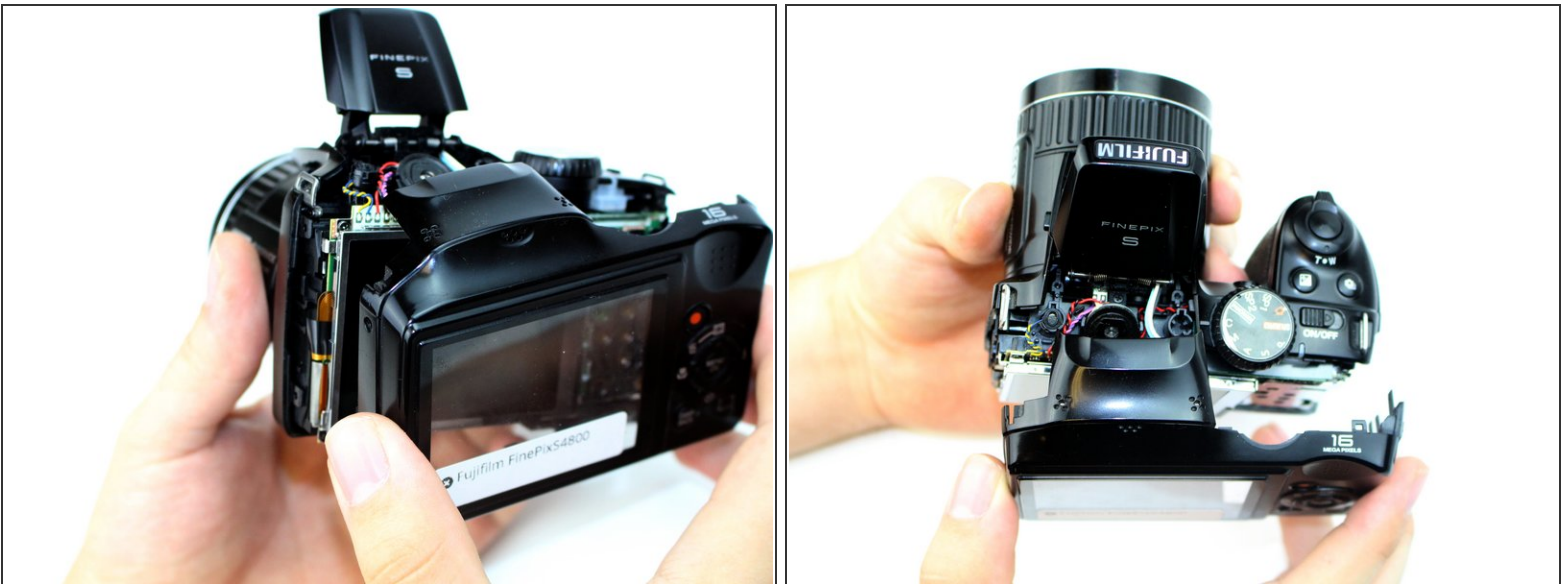
## Step 7



- Use a plastic opening tool to separate the rear case from the camera on each of the sides until the panel is completely separated.

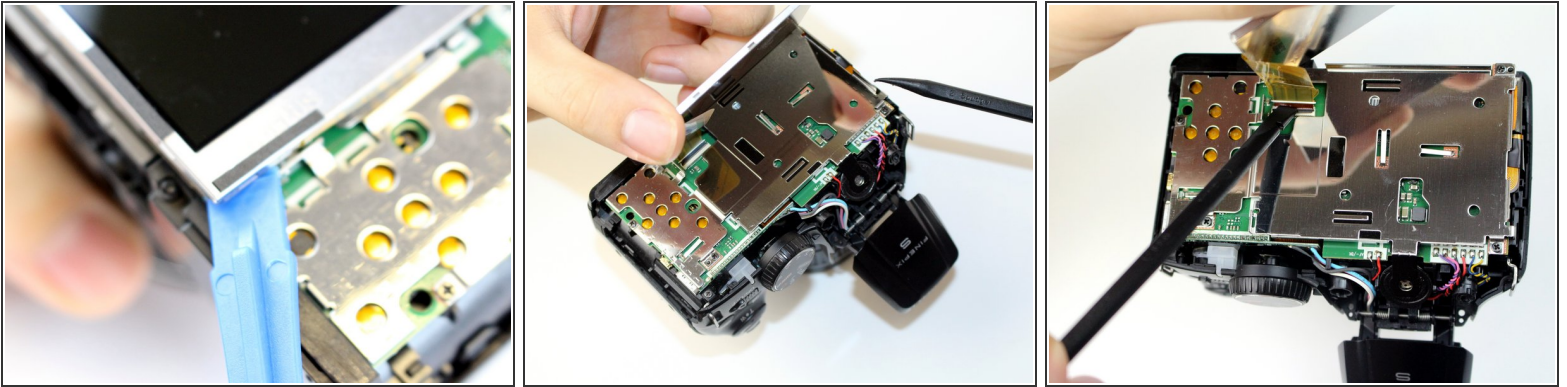
 The plastic case is fragile, so take your time on each side making sure to pry each side evenly as you continue around the camera with the tool.


## Step 8




- Gently, remove the rear case from the camera and set it aside.

## Step 9 — LCD Screen

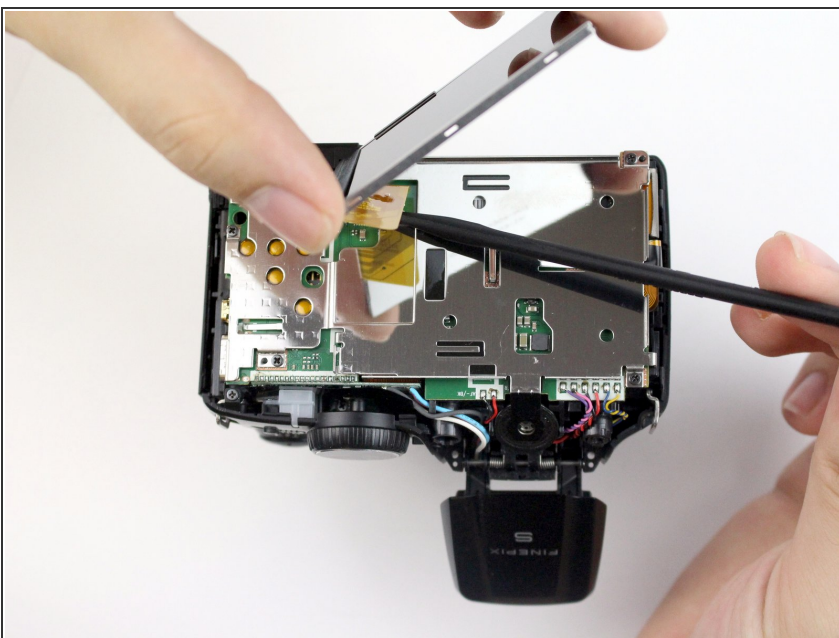


 At this point, it is highly recommended that you wear an ESD wristband to prevent damage to the internal electronic components.

 With respect to the camera that was disassembled for this guide, the LCD display easily fell out of its housing after the rear case was removed. If your screen fits more tightly, you can use a plastic removal tool to gently pry up one of the edges of the screen and that will release it from its mount.

- Gently tilt the LCD screen toward the bottom of the camera and use a spudger to flip the lock for the ZIF cable attached to the LCD.

## Step 10



- Lift the screen away from the camera and set it aside.

To reassemble your device, follow these instructions in reverse order.