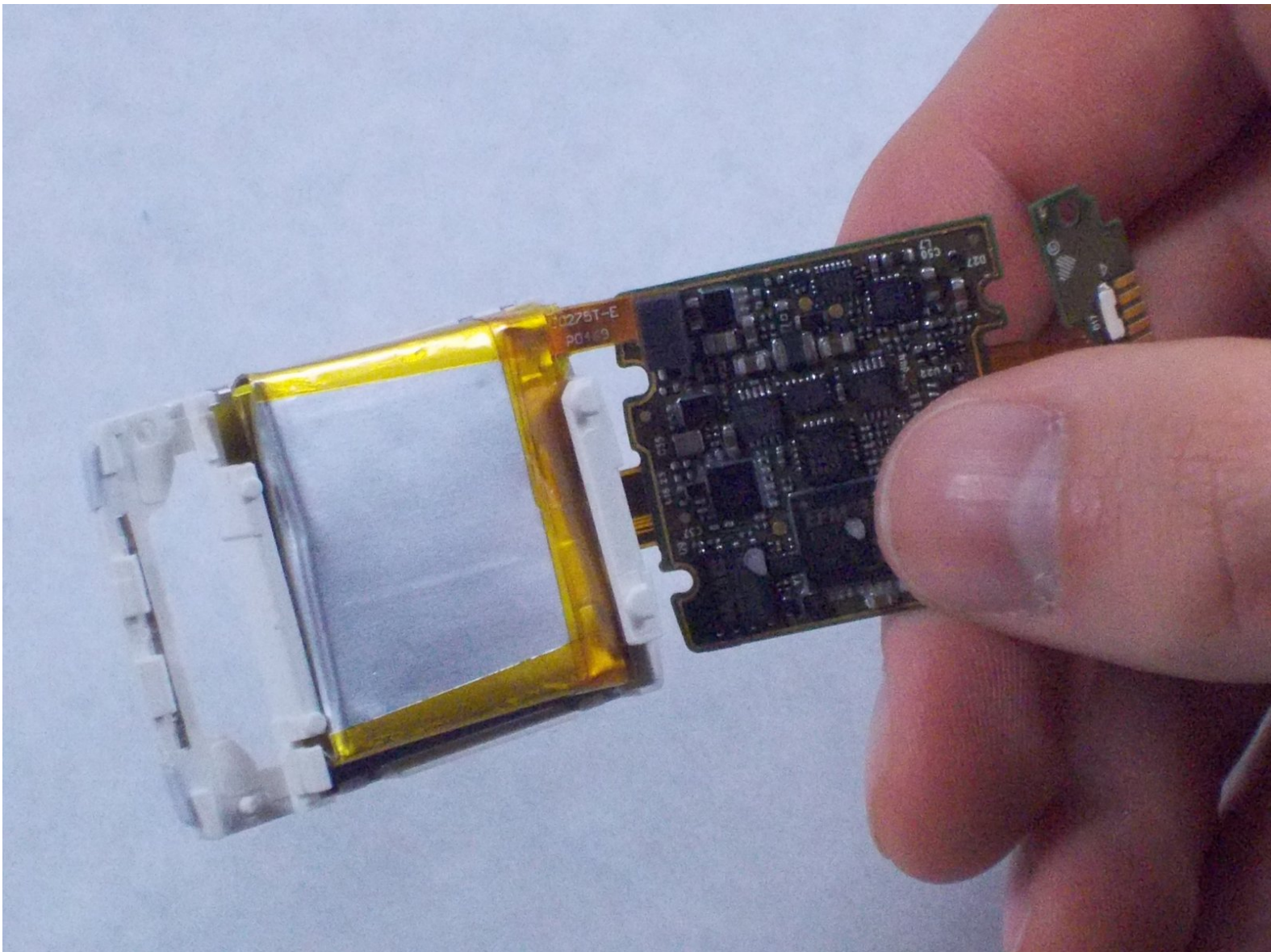




# Basis Peak Battery Replacement

With this guide, users will be able to replace the Basis Peak's battery.

Written By: Dominic Calcasola



---

## INTRODUCTION

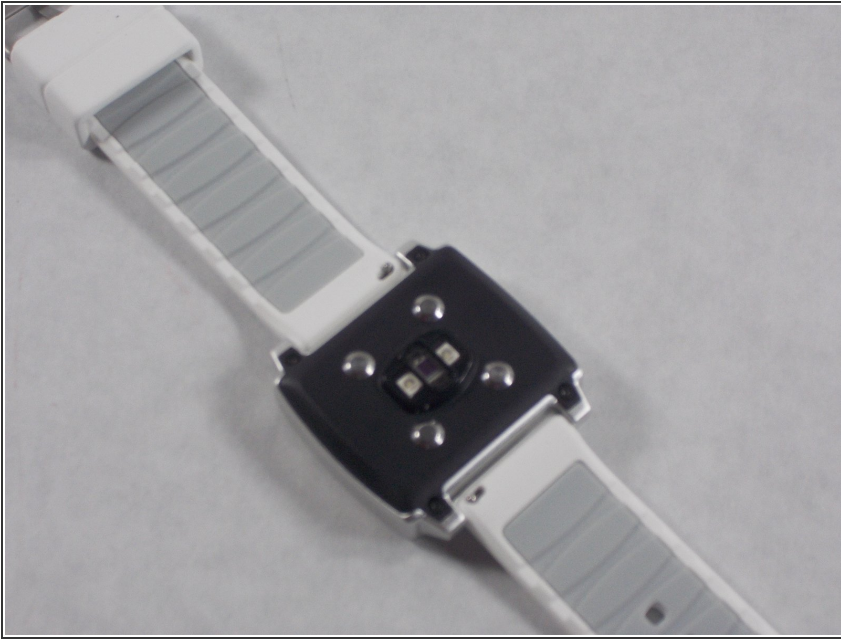
This guide gives you the information you need to replace the battery on the Basis Peak product. Each step is shown with pictures to make sure you won't get lost through your work. Its quite simple to get through especially with the helpful guidance provided. There's no tricks and the product can only be dissemble through this one way.



### TOOLS:

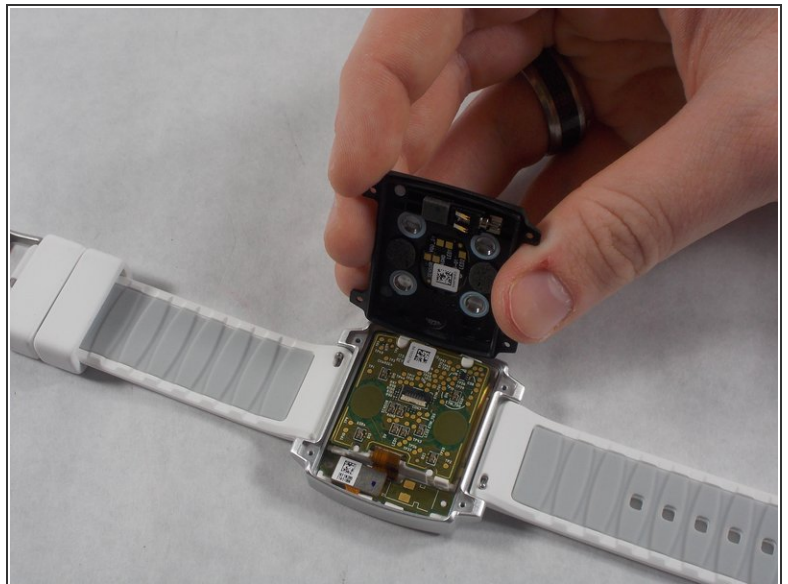
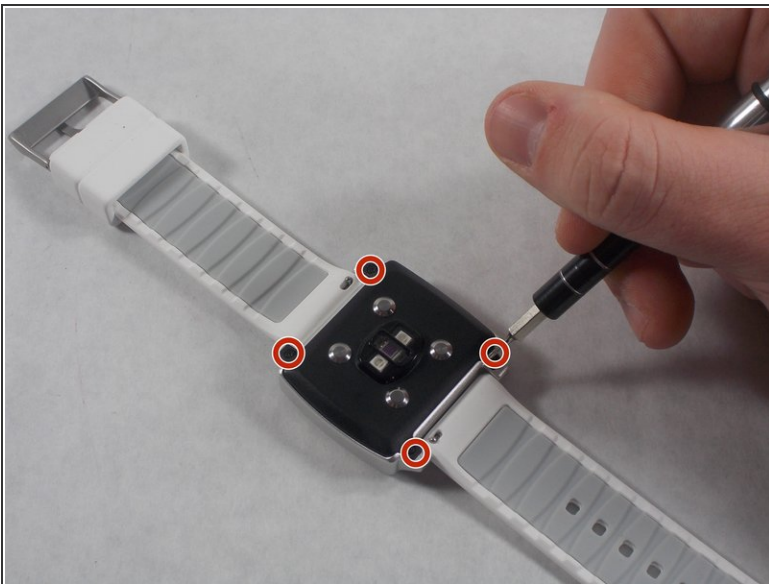
- [T2 Torx Screwdriver](#) (1)
  - [Heavy-Duty Spudger](#) (1)
-

## Step 1 — Frame



- Flip the watch over and orient it such that the buckle is away from you and the back panel is revealed.
- ⓘ Maintain this orientation to follow the guide.

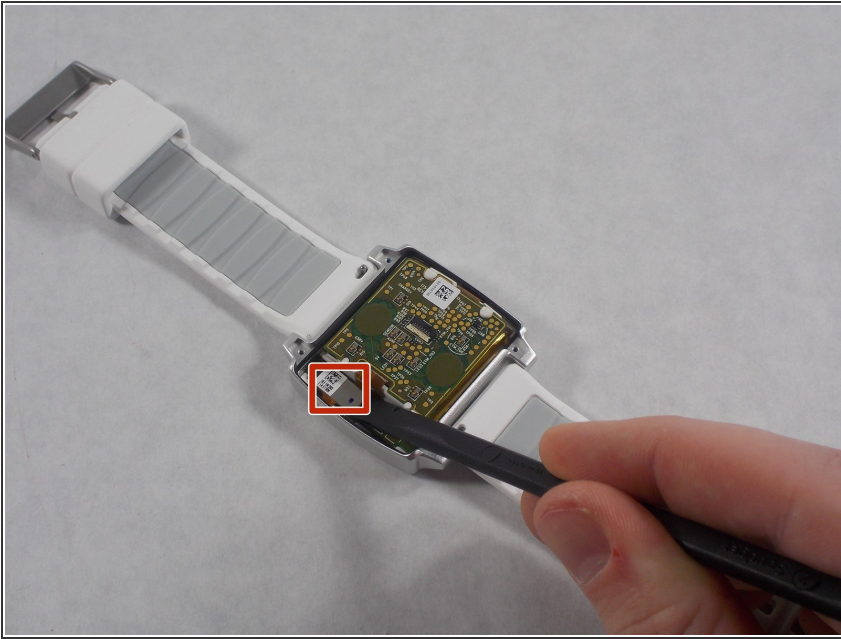
## Step 2



- Remove the four base screws using a size 2 TORX screwdriver to separate the back plate from the frame.

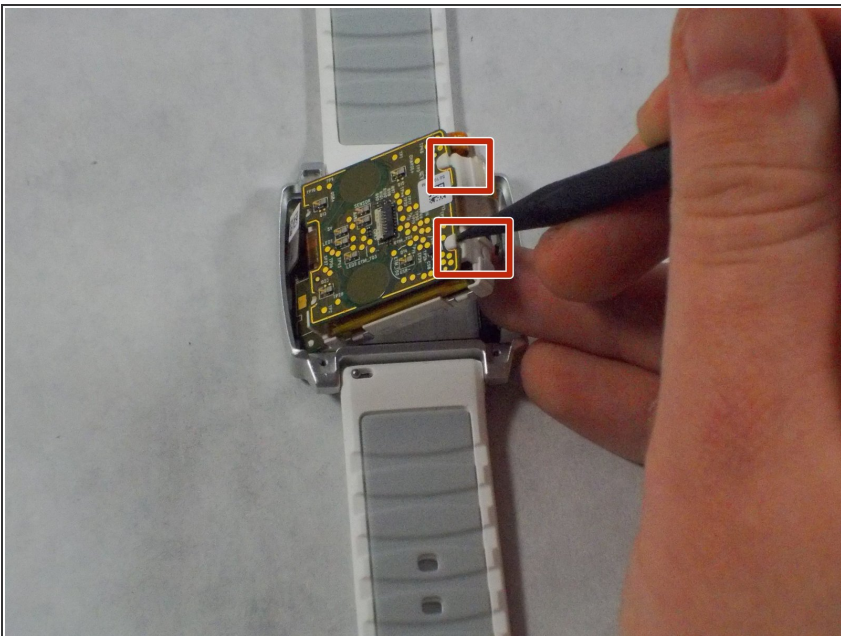


### Step 3



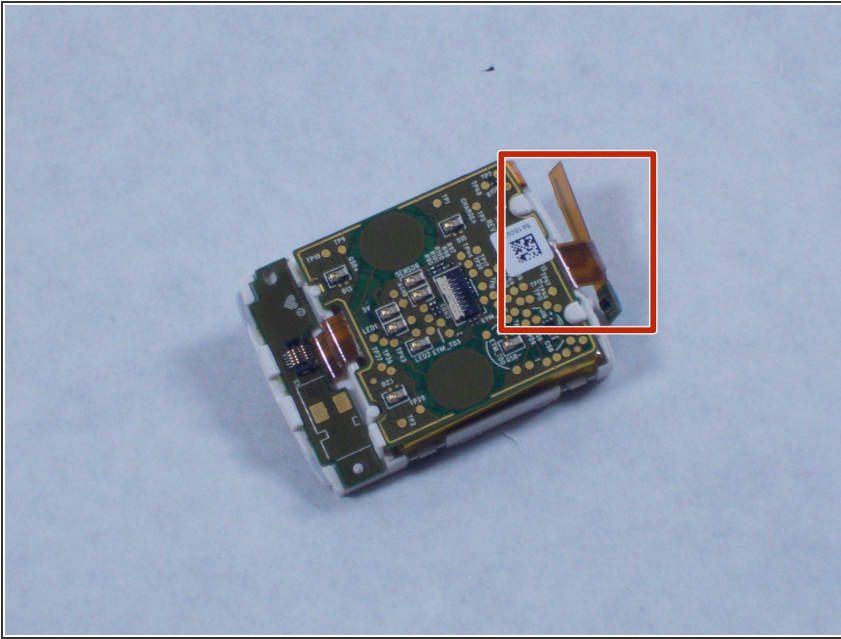
- Disconnect the ribbon cable on the left side of the motherboard by using a spudger.

### Step 4



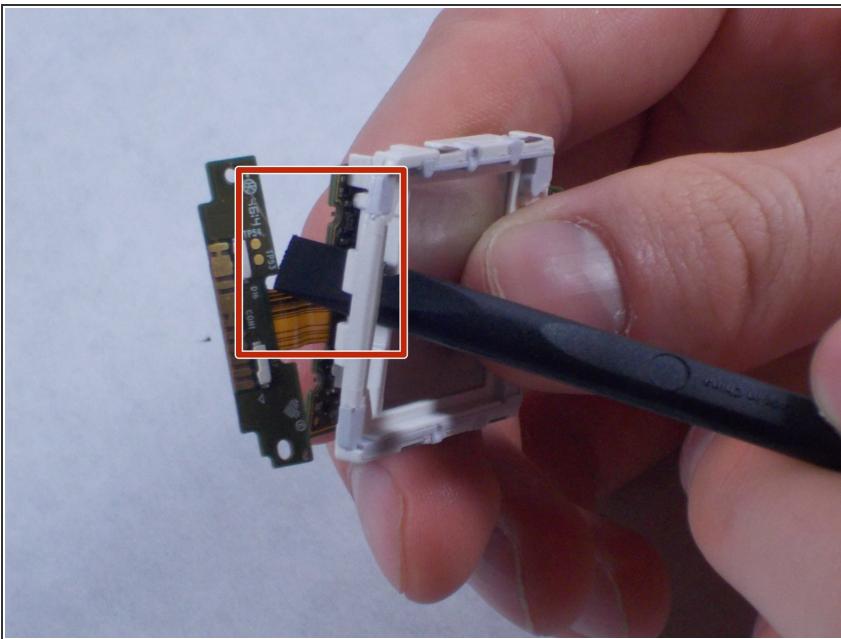
- Use a spudger and apply pressure to the white plastic wall to the right of the motherboard. Use this to lever the electronics out of the frame.
- ⓘ The clips have small lips that you can put the spudger under to get more leverage.
- ⚠ Using any of the metal to pry out the electronics may damage some of the wiring. It is crucial to only press on the plastic.

## Step 5 — Motherboard



- Remove the right side ribbon cable by pulling it off with your fingers.

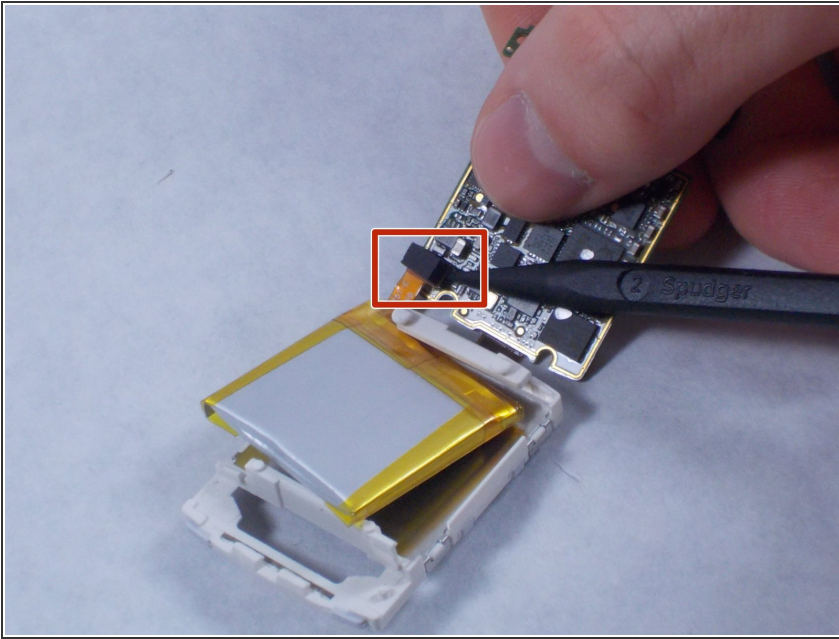
## Step 6



- Use the spudger tool to poke out the exposed motherboard section as seen in the photo.
- ⚠ As always be careful when disconnecting the cables or batteries.



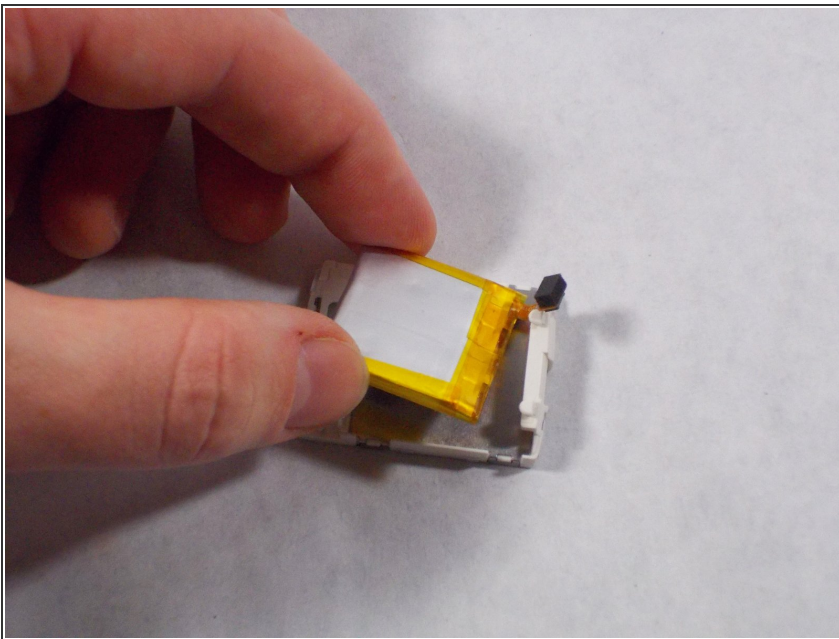
## Step 7



- Put a nylon spudger underneath the battery's press-fit connector and lift up to free the ribbon cable and motherboard.

⚠ As always be careful when disconnecting the cables or batteries.

## Step 8 — Battery



- Grip the battery with your fingers and remove it from the plastic.

To reassemble your device, follow these instructions in reverse order.