



Fujifilm Fine S1800 LCD Screen Replacement

This guide explains how to replace the old...

Written By: Ryan Rockford



INTRODUCTION

This guide explains how to replace the old broken LCD screen.

TOOLS:

[iFixit Opening Tool](#) (1)

[JIS Driver Set](#) (1)

Step 1 — Back Cover Assembly



- Unscrew the four 4mm screws on the left-hand side of the camera with the JIS #1 screwdriver.

Step 2



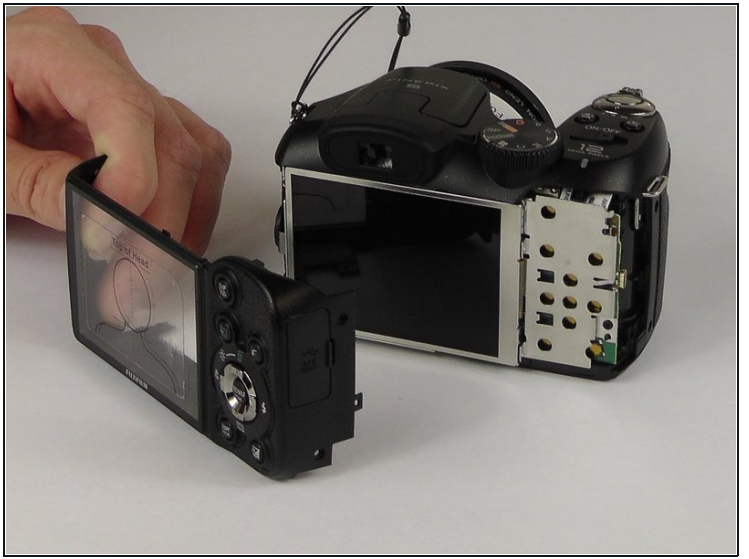
- Unscrew the four 4mm screws on the right-hand side of the camera with the JIS #1 screwdriver.

Step 3



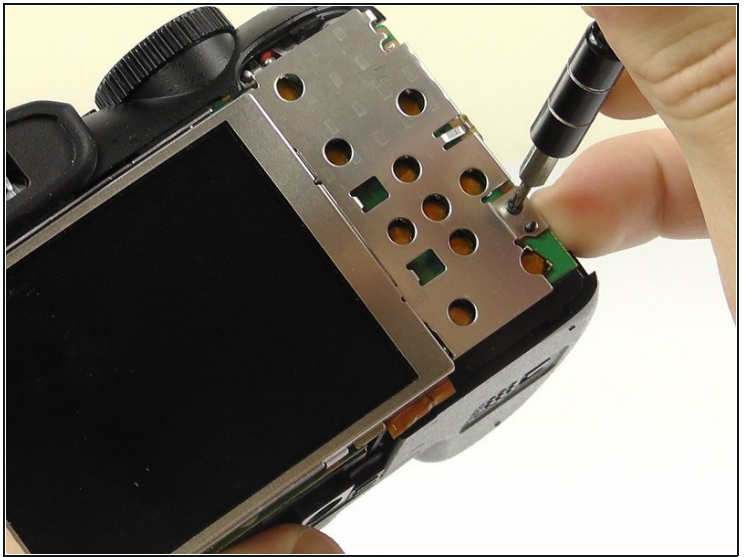
- Unscrew the three 4mm screws on the bottom of the camera with the JIS #1 screwdriver.

Step 4



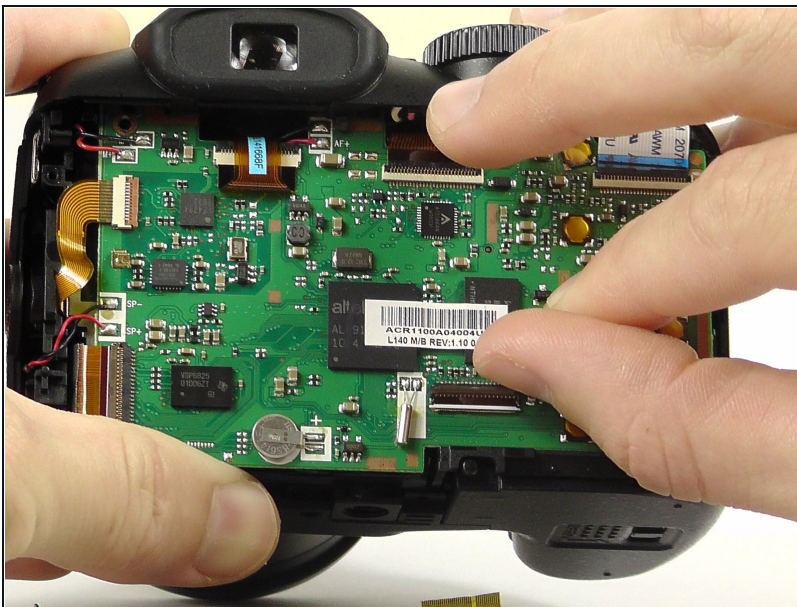
- Take the plastic opening tool and place it in the space between the top of the screen and the top of the camera.
 - The cover will pop out.
- ① You may have to work the back cover from different sides to get it to pop off.

Step 5 — LCD Screen



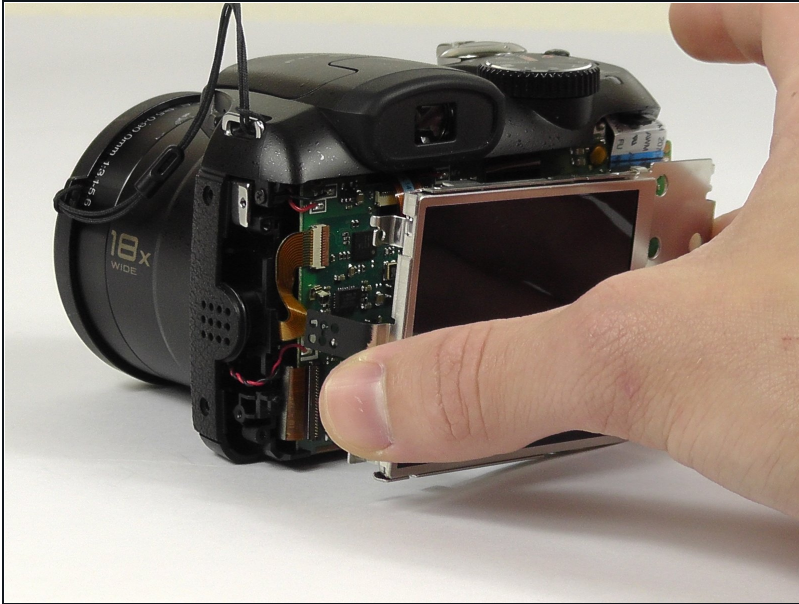
- Remove the three 2 mm screws from the back cover plate with the Phillips #000 screwdriver.
- Gently lift the back cover away from the device.
⚠ Do not pull or yank free. The LCD screen is connected to the motherboard via a small ribbon cable.

Step 6



- Move the lever to disconnect the ribbon cable from the circuit board.
⚠ Do not rip the fragile micro ribbon cable.

Step 7



- Gently remove the LCD screen.
⚠ **Do not** touch the screen directly.

To reassemble your device, follow these instructions in reverse order.