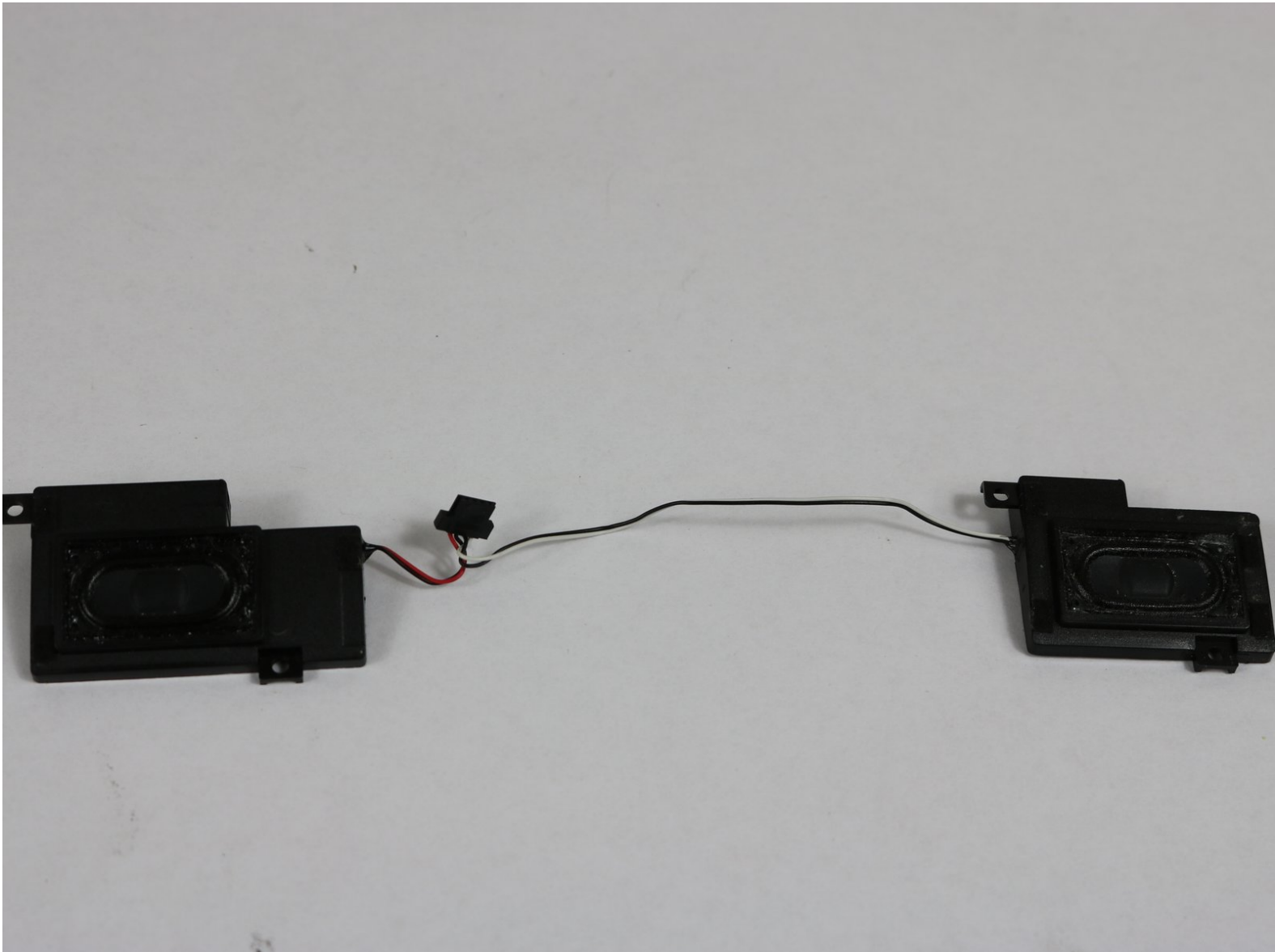




Acer Aspire One 725-0845 Speaker Replacement

A step-by-step guide to replacing the speakers in the Acer Aspire One 725-0845.

Written By: James Catalfu



INTRODUCTION

The speakers are the sound source for the device. A damaged speaker or outdated driver will cause the device to produce unclear or no sound. If you have followed all the steps in the [Troubleshooting Guide](#) and found that you have a damaged or faulty speaker, this step-by-step guide will lead you through the process of removing the battery, back-plate, hard drive, cover/palm rest, and speakers.



TOOLS:

- [64 Bit Driver Kit](#) (1)
- [Spudger](#) (1)
- [iFixit Opening Tools](#) (1)



PARTS:

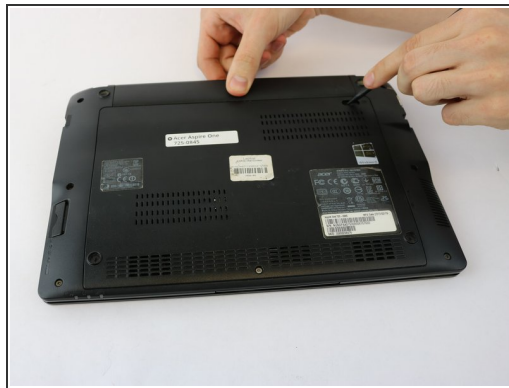
- [Acer Aspire One 725-0845 Speakers](#) (1)

Step 1 — Battery



- Ensure the device is powered off by holding down the power button on the top left-hand side.
- On a flat, level surface, flip the device over so that the back-plate is accessible.

Step 2



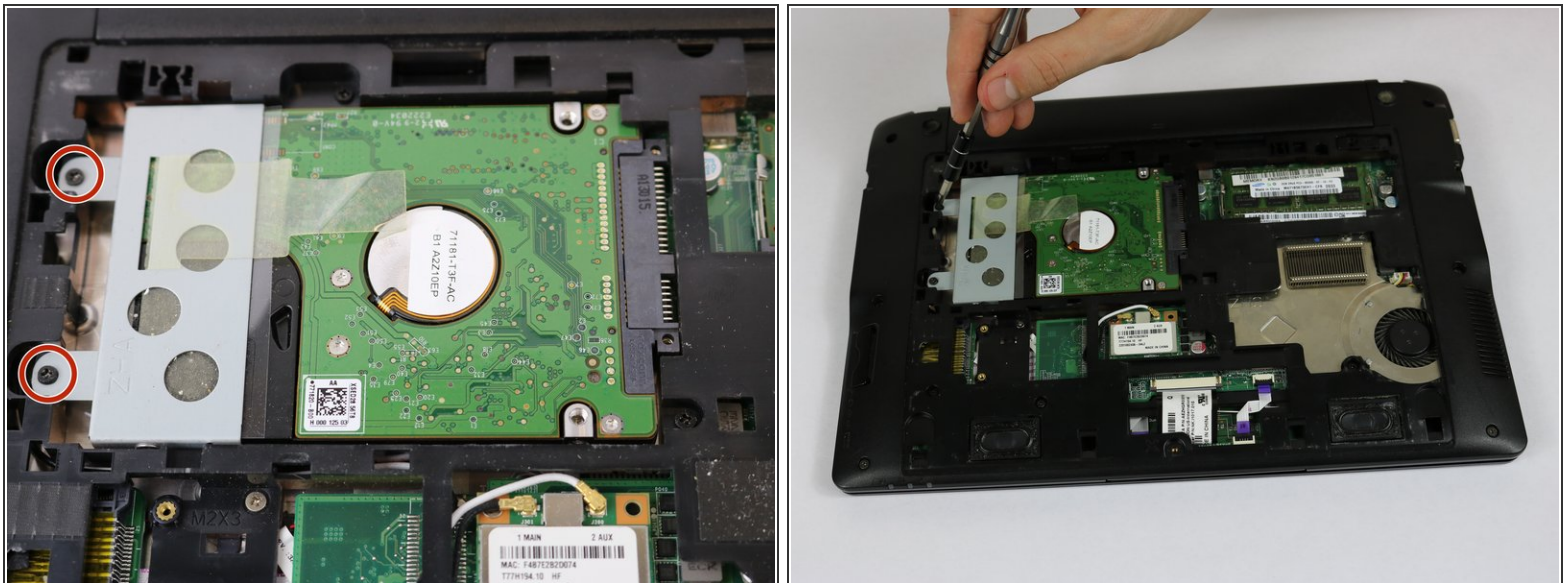
- Using a spudger or any fine-pointed tool, push the release slide away from the center of the device.
- Simultaneously pull the battery out and away from the device.

Step 3 — Back Plate



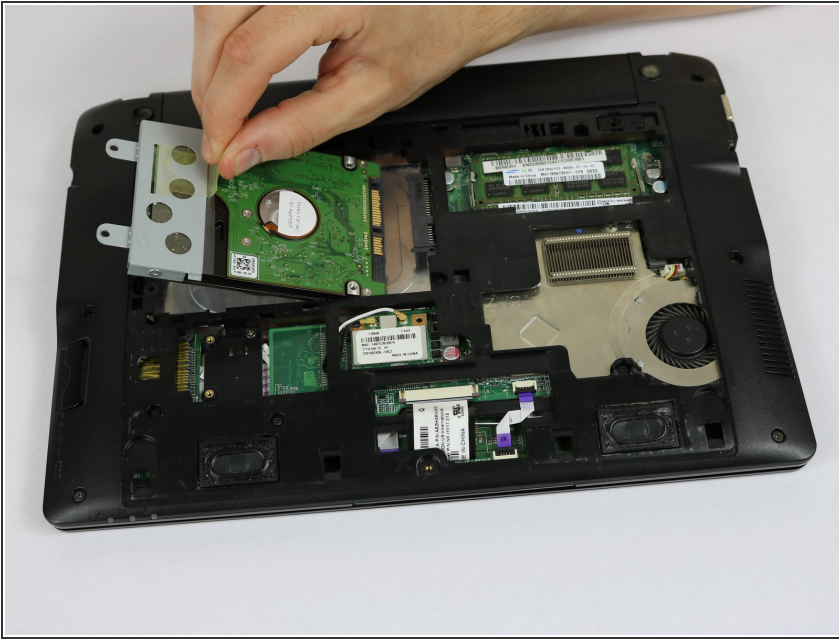
- Using the JIS J1 Screwdriver Bit and Driver, remove the center screw (7.0 mm) from the back-plate.
- Using your hands, slide the back-plate away from the center of the device and remove.

Step 4 — Hard Drive



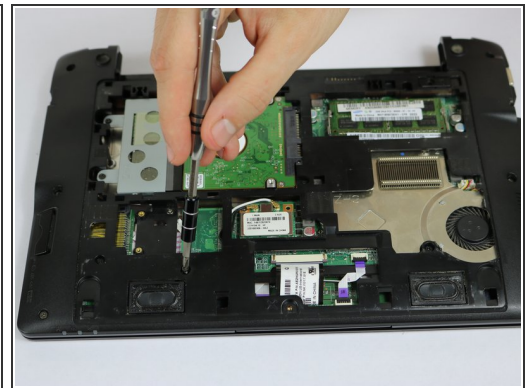
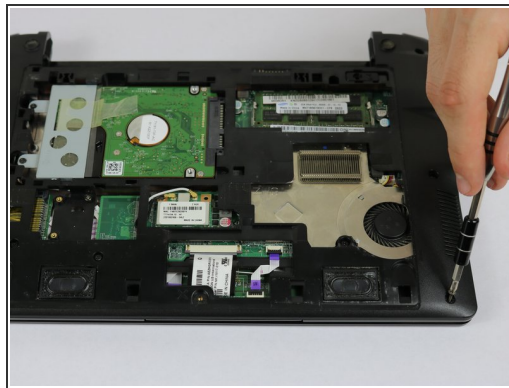
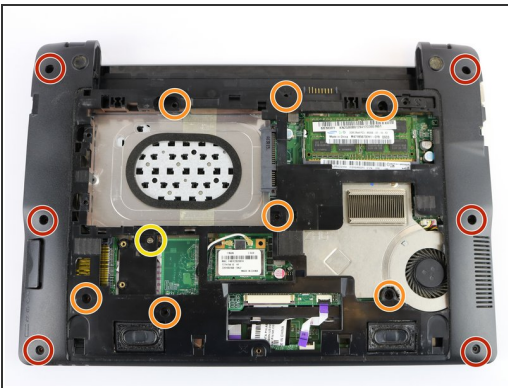
- Using the JIS J1 Screwdriver Bit and Driver, remove the two screws (9.0 mm) from the outward side of the hard drive.

Step 5



- Using your hand, slide the hard drive away from the center of the device until it disconnects from the motherboard.
- Carefully lift the outward side of the hard drive and place the drive on a clean, non-magnetic surface.

Step 6 — Inner Frame



- Using the JIS J1 Screwdriver Bit and Driver, remove the six outside screws (7.0 mm).
- Using the JIS J1 Screwdriver Bit and Driver, remove the seven inside screws (8.0 mm).
- Using the JIS J1 Screwdriver Bit and Driver, remove the one inside screw (3.0 mm).

Step 7



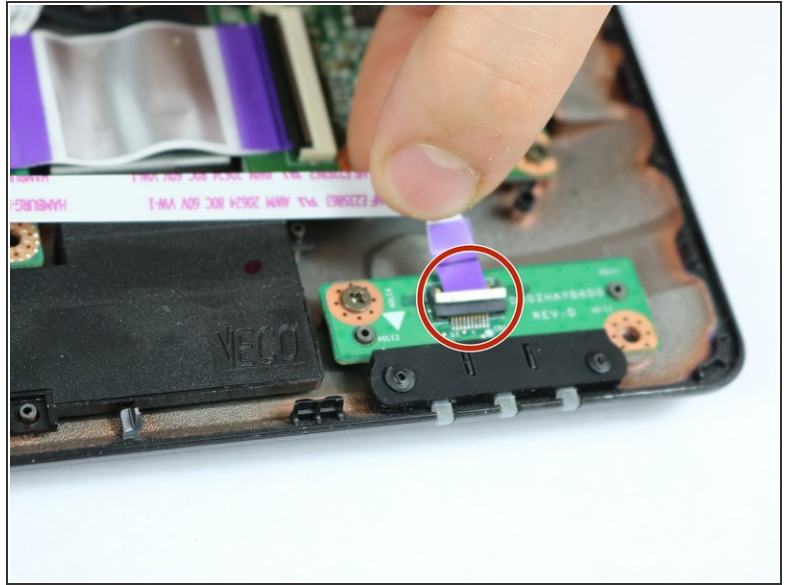
- Using your hands, slide the brown release tabs for the keyboard connection away from the center of the device.
- Gently remove the keyboard connection by pulling away from the center of the device.
- Lift the black locks for the touchpad connections into the upward position.
- Gently remove the touchpad connections by pulling the purple tabs away from the locks.

Step 8



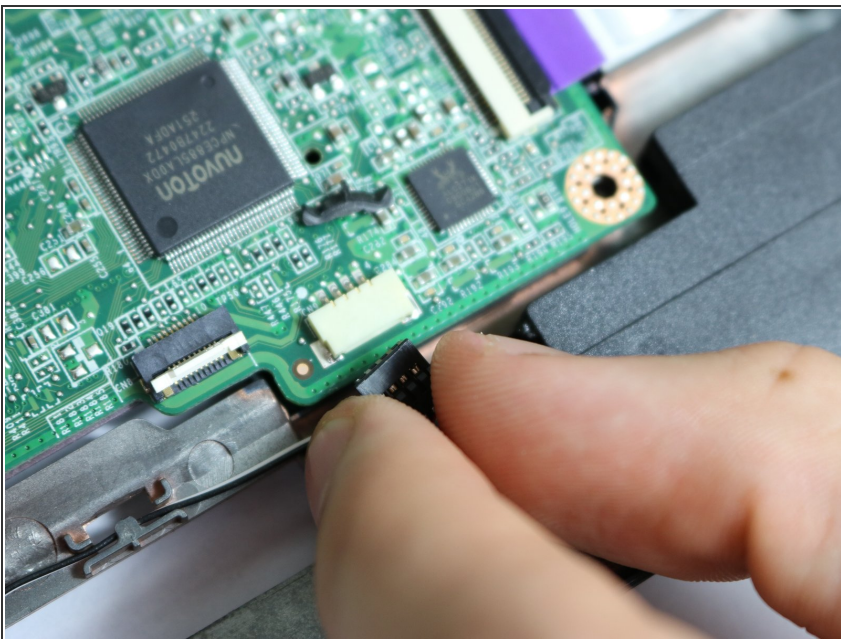
- Flip the device over and open it.
- Using the plastic opening tools, remove the cover/palm rest from the frame of the device.

Step 9 — Speaker



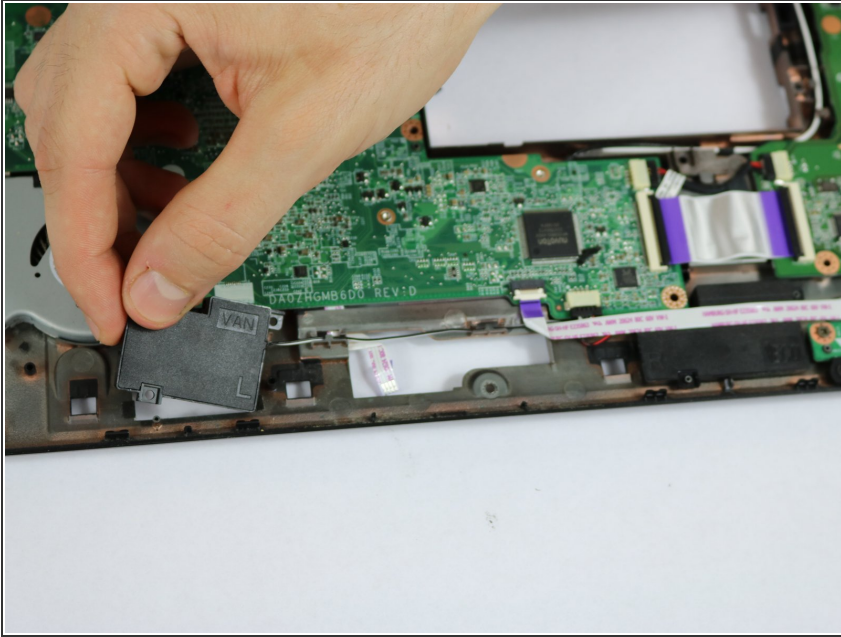
- Lift the black locks for the indicator light connections into the upward position.
- Remove the indicator light connection by gently pulling the purple tabs away from the locks.

Step 10



- Disconnect the speakers from the motherboard by carefully pulling the adapter away from the center of the device.

Step 11



- Very carefully remove the speaker wire from the wiring harness.
- Remove the speakers by lifting them up and away from the device.

To reassemble your device, follow these instructions in reverse order.