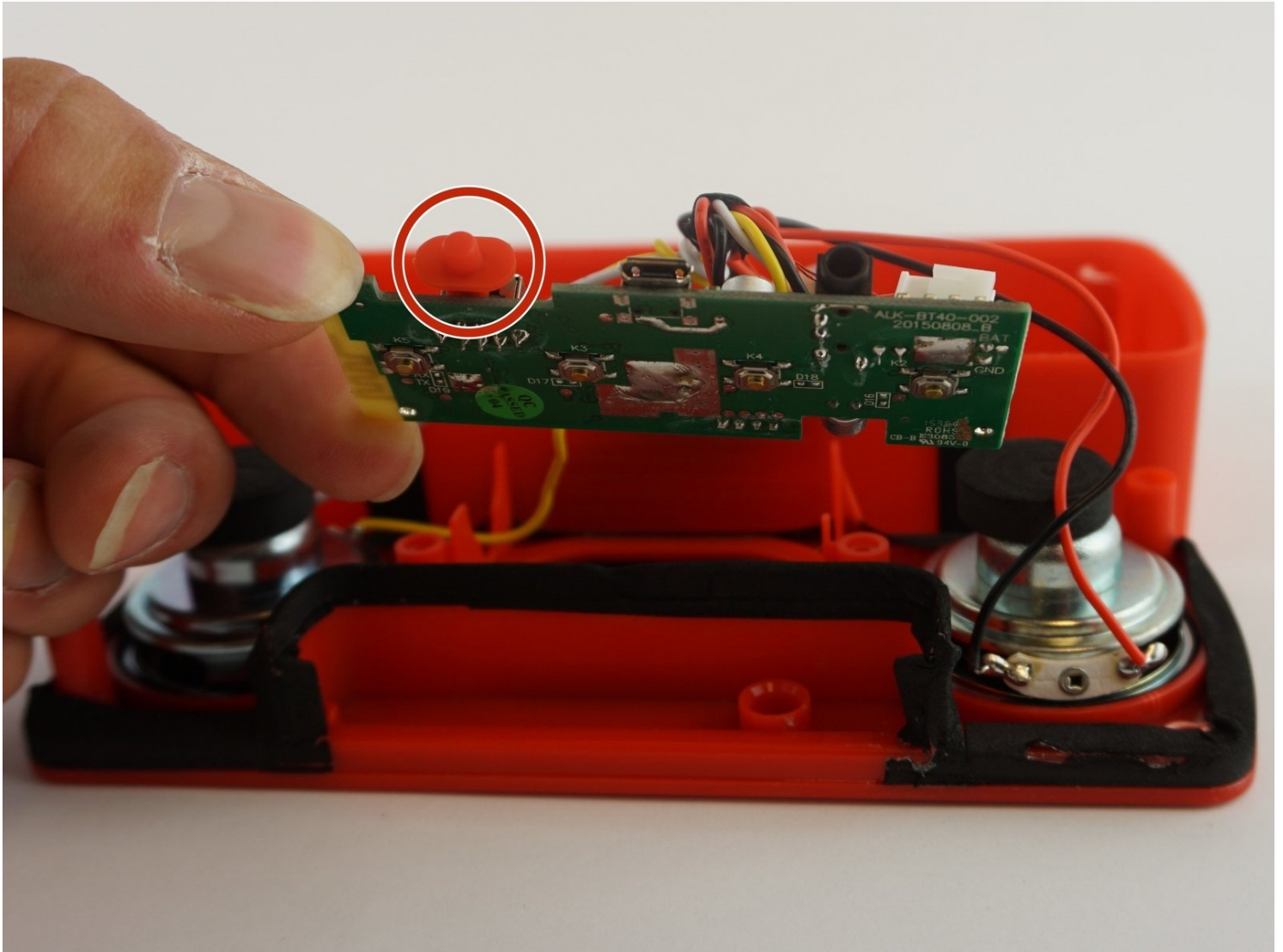




Insignia NS-CSPBTHOL-R Power Button Replacement

Is the power button no longer powering on your...

Written By: Judith Villegas



INTRODUCTION

Is the power button no longer powering on your device? This guide will help replace the power button so you can turn your speaker on and off.

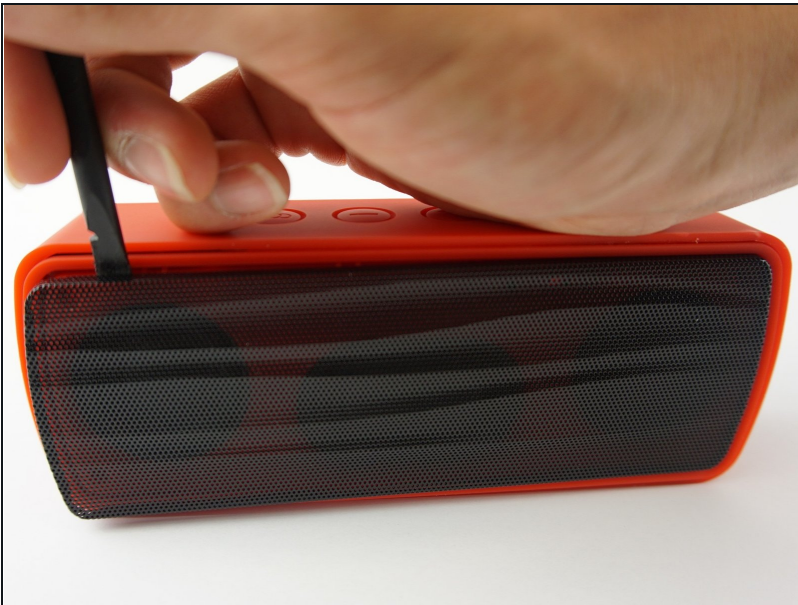
TOOLS:

[Heavy-Duty Spudger](#) (1)

[JIS Driver Set](#) (1)

[Tweezers](#) (1)

Step 1 — Battery



- Push the Spudger into the crevice between the grated panel of the speaker and the base of the speaker.
- Angle the spudger to create a separation between the grate and the base.

Step 2



- Slide the spudger along the separation between the grate and the base of the speaker to loosen the grate. Do this to the entire perimeter of the speaker.

Step 3



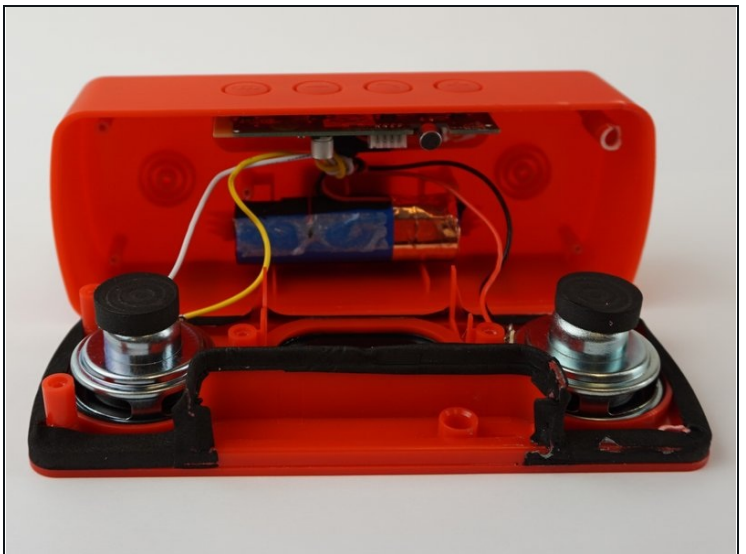
- Pull the grated panel off.

Step 4



- Remove the six 3mm screws using the J00 JIS screw bit. This will require a long, narrow screwdriver.

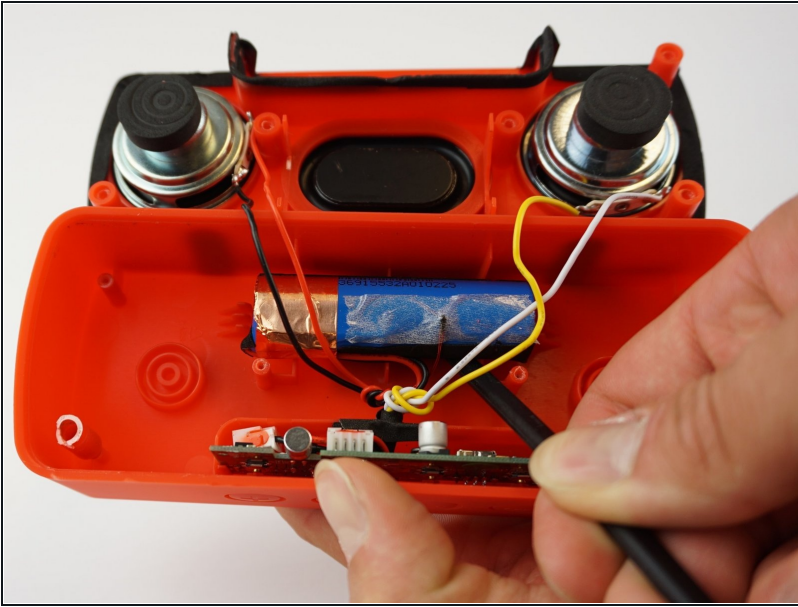
Step 5



- Push the spudger into the crevice between the base and the face of the speaker and create a separation.
- Slide the spudger along the entire perimeter and gently pull off the face of the speaker.

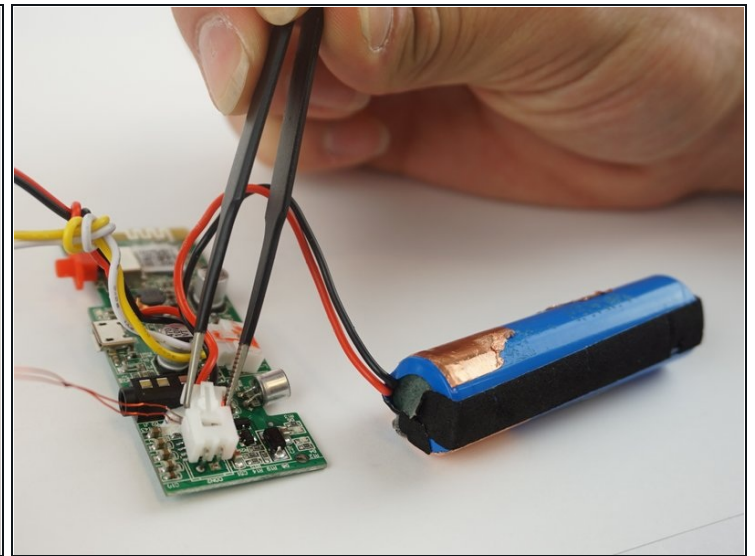
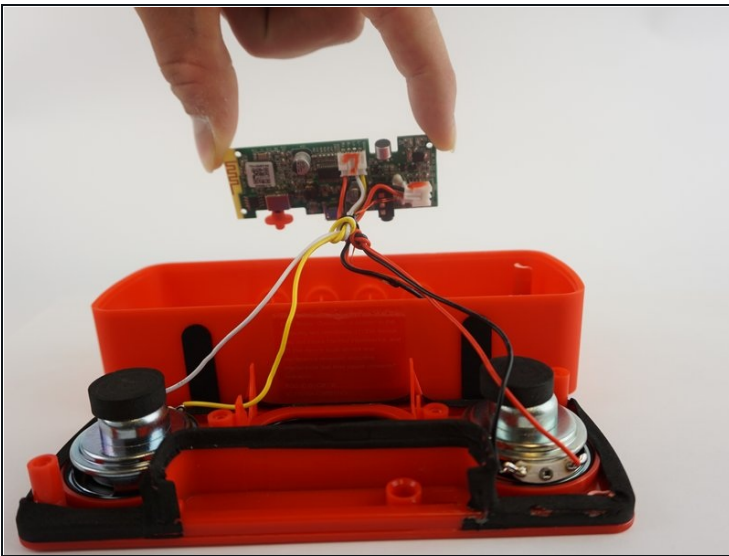
⚠ The two parts are connected by wires, do not rip them apart.

Step 6



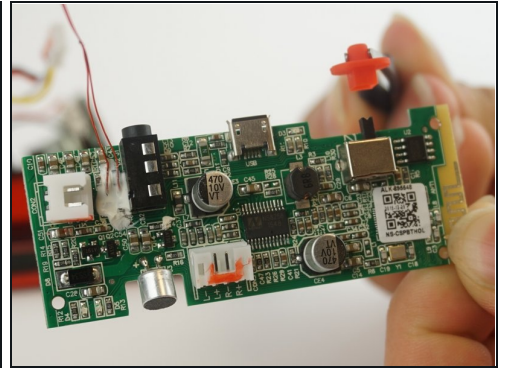
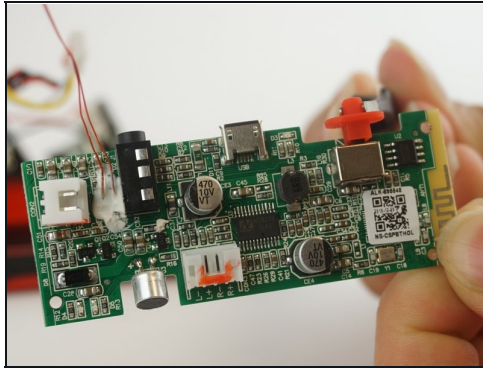
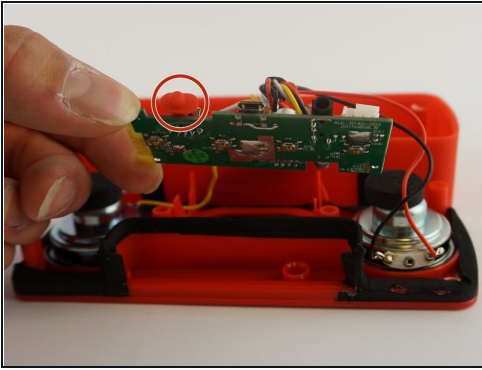
- Use the spudger to release the battery by sliding it underneath the battery to create a separation.
- Remove the battery.

Step 7



- Pull the motherboard from the base of the speaker.
- Using [tweezers](#), squeeze and pull on the white plastic clip that connects the battery wires to the motherboard.
- Unclip the battery from the motherboard.

Step 8 — Power Button



- Using [tweezers](#), detach the power button from the mother board.

To reassemble your device, follow these instructions in reverse order.