



Huawei Watch Jewel Battery Replacement

A watch's battery is responsible for...

Written By: ngan tran



INTRODUCTION

A watch's battery is responsible for maintaining the life-time of the watch. Therefore, a damaged battery will take away from the enjoyment of the watch. This guide highlights the steps required to replace the Huawei Jewel Battery. It can be a relatively difficult process, so follow all steps carefully.

TOOLS:

[T3 Torx Screwdriver](#) (1)

[Pro Tech Toolkit](#) (1)

150 mm Flex Extension

[Magnetic Project Mat](#) (1)

[Metal Spudger](#) (1)

[iFixit Opening Picks \(Set of 6\)](#) (1)

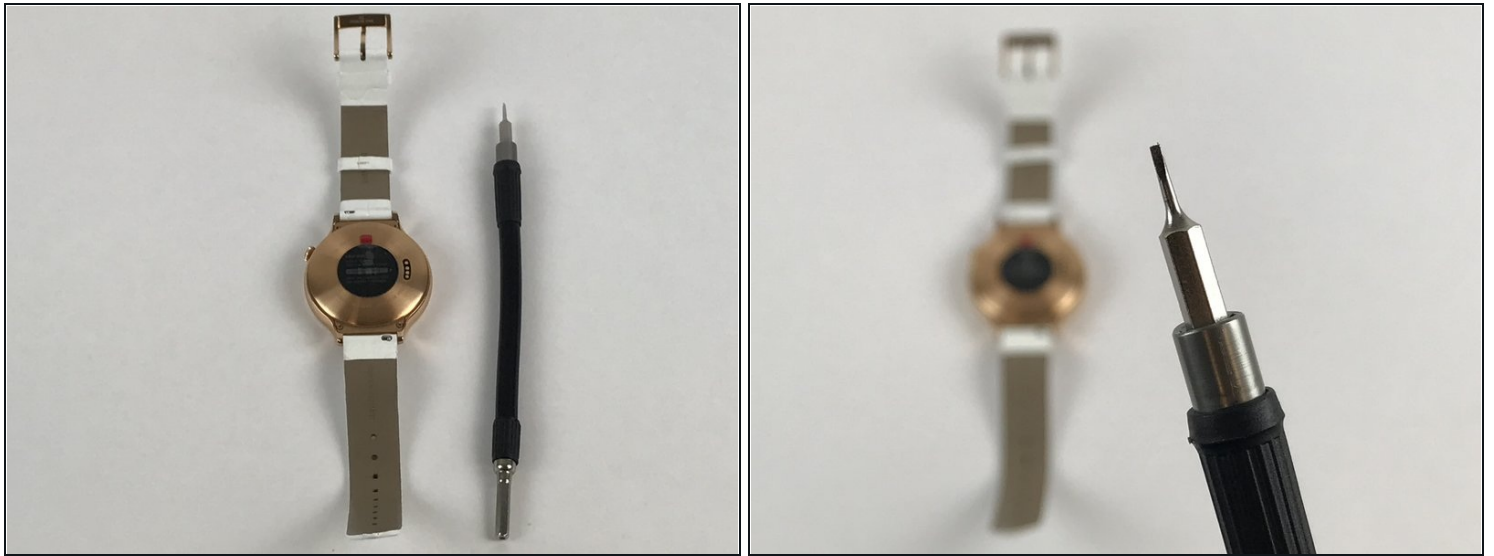
[Tweezers](#) (1)

[T2 Torx Screwdriver](#) (1)

[Phillips #000 Screwdriver](#) (1)

[Spudger](#) (1)

Step 1 — Strap



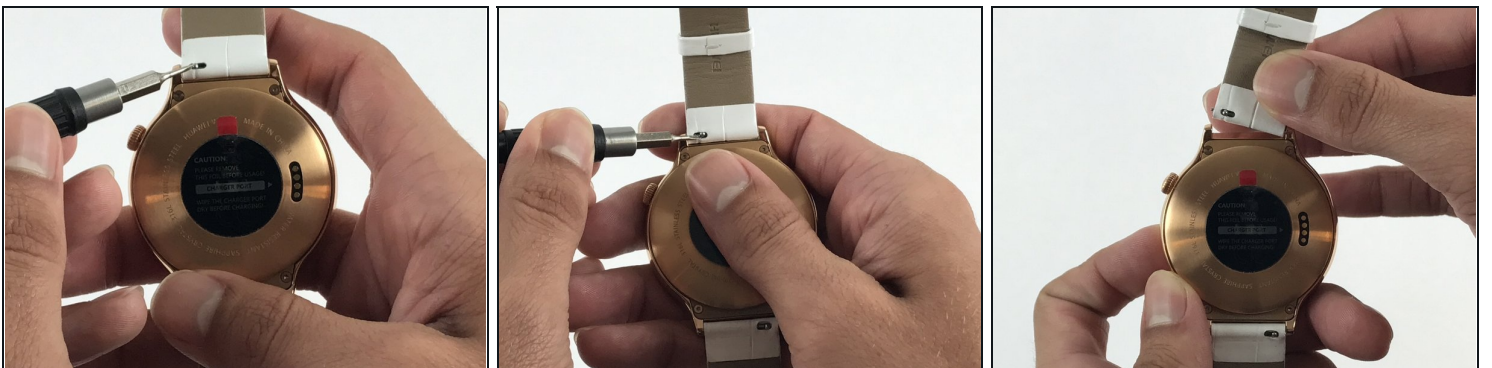
- Begin by laying the watch on a flat, smooth surface.
- ① This will prevent the watch screen from suffering damage.
- Obtain a Flex Extension with a Size 1.0 mm flat-head. In the case of not having said tool, for this model of watch one can use the hands to replace the strap.

Step 2



- Locate the two springs on the back of your watch.
- ① The watch comes with two of these springs on each side of the back-face. These are used to release the straps from the body of the watch.

Step 3



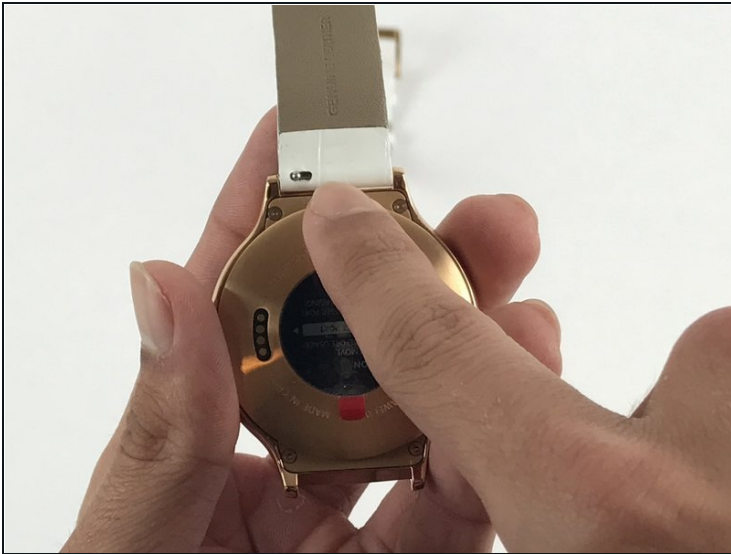
- Use the Flex Extension to push the spring to the right. This will release the strap from the watch head.

Step 4



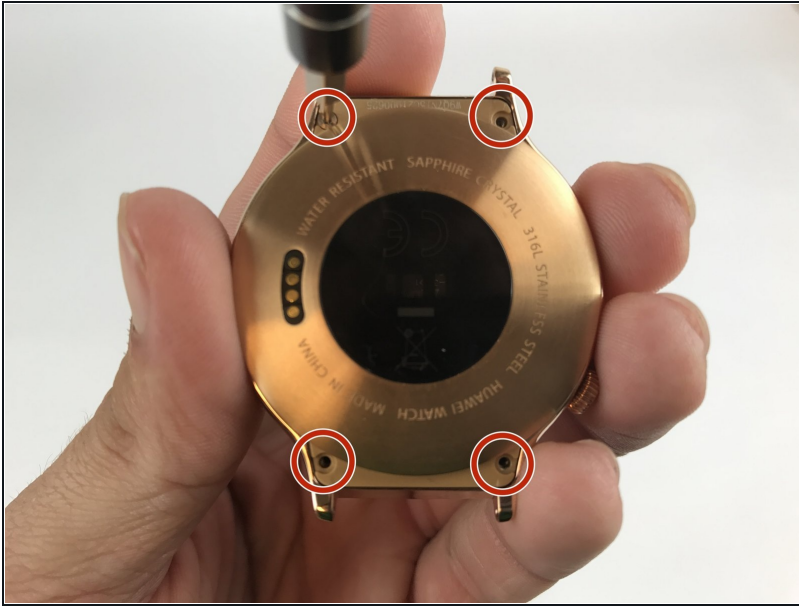
- Carefully pull the strap away from the watch.

Step 5



- Repeat step 3, this time using the other strap.

Step 6 — Motherboard



- Locate the 4 T3 screws in the back of your watch, and use the T3 Torx Screwdriver to unscrew them.

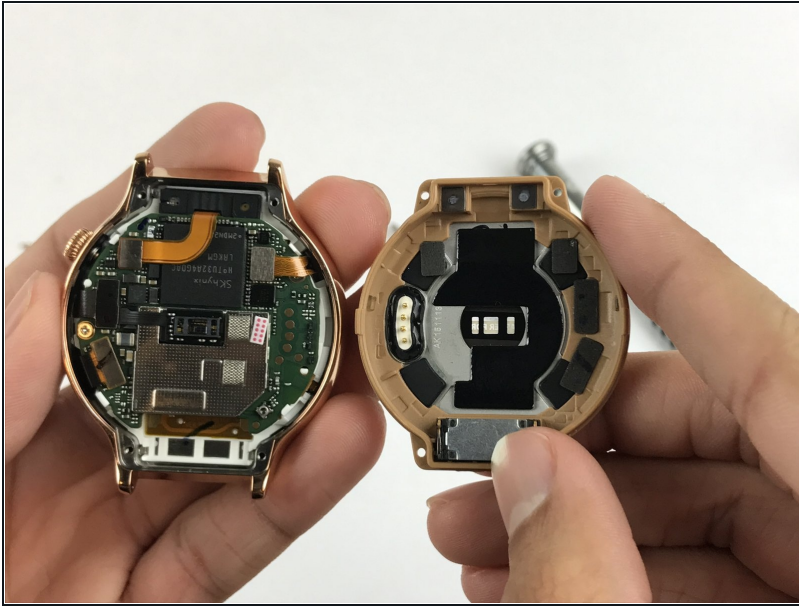
Step 7



- Use the Metal Spudger to pry open the back of your watch.

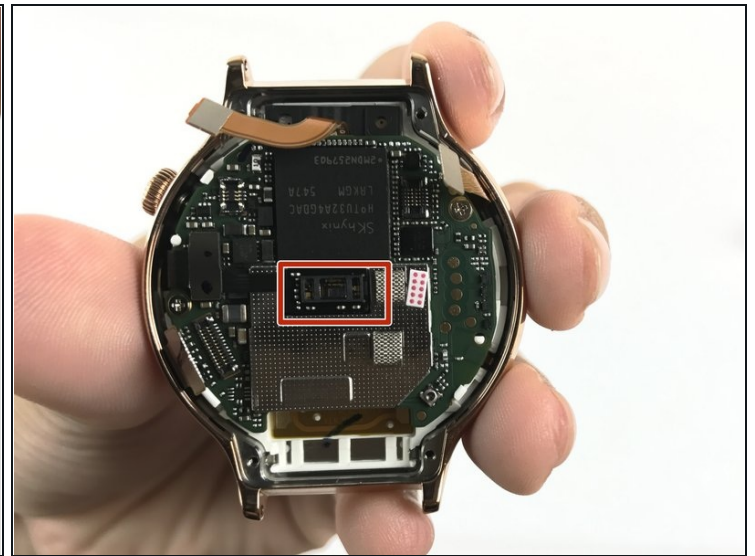
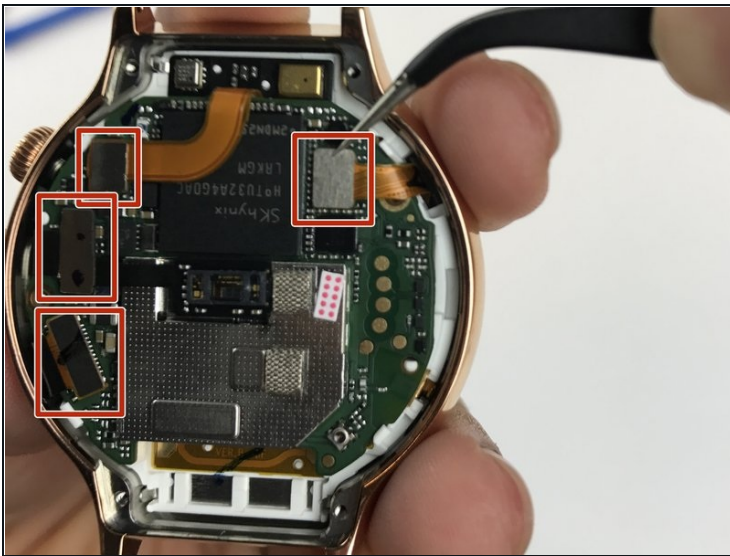
⚠ Make sure the watch is off and not plugged in when prying into the case with the Metal Spudger to avoid the risk of electric shock.

Step 8



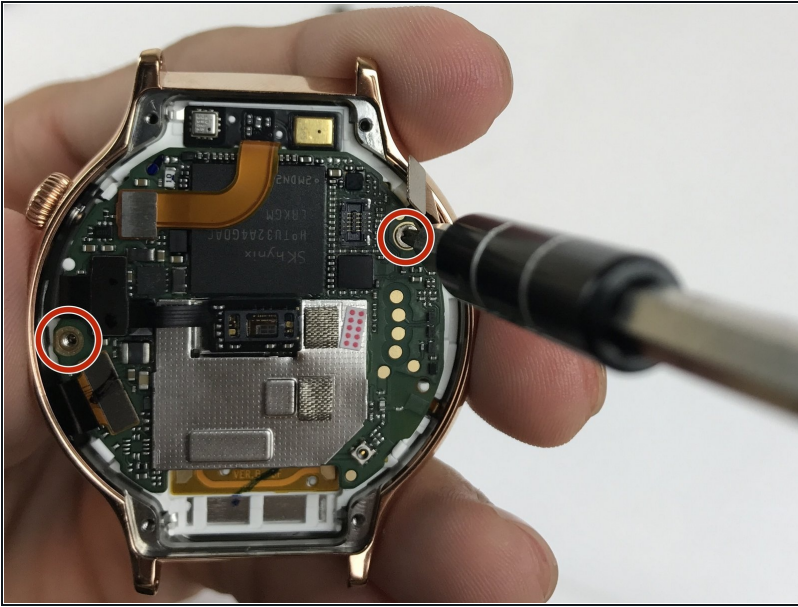
- Remove the back case.

Step 9



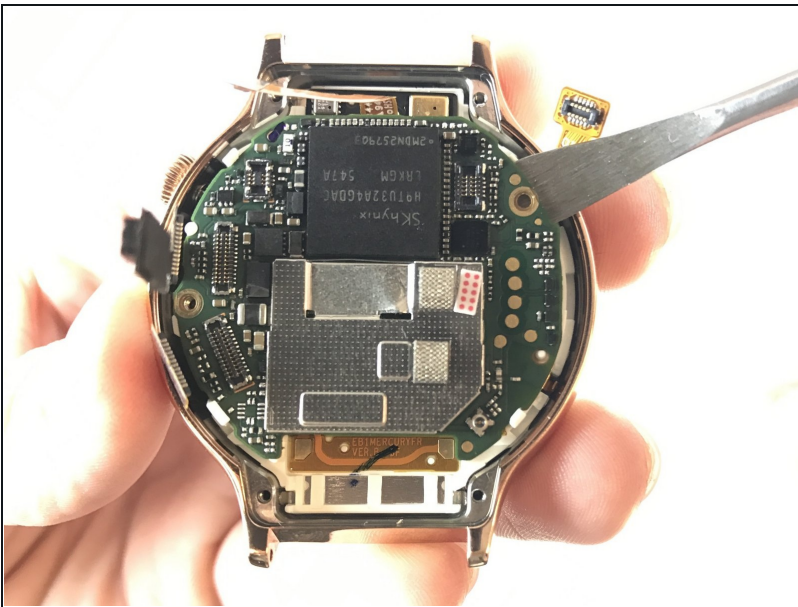
- Use [tweezers](#) or a nylon spudger to pry up the four press-fit connectors.
- ① The glued-down connector in the middle is harder to remove than the rest. That is perfectly fine.

Step 10



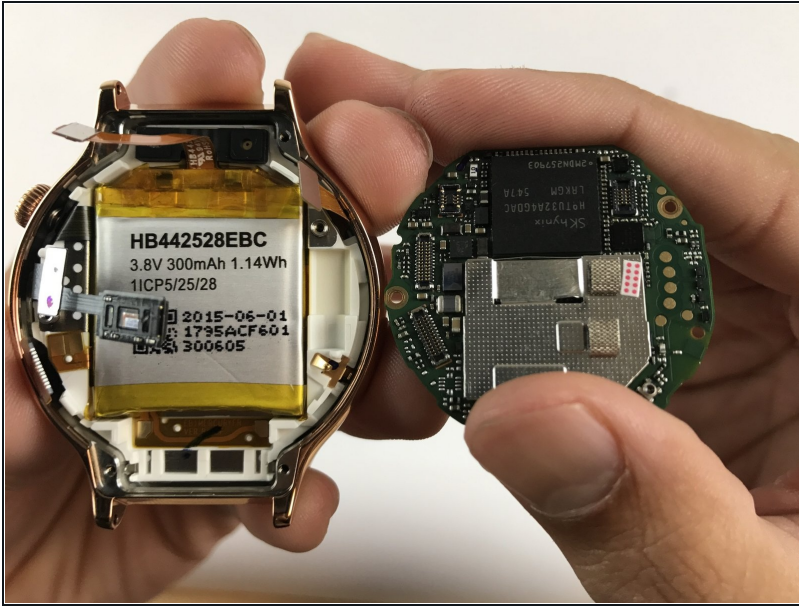
- Locate the two Phillips #00 screws holding down the motherboard, and use the Phillips #00 screwdriver to remove them.
- ☑ Ensure to place these screws separately from the Torx screws, as they can easily be mixed up.

Step 11



- Use the Metal Spudger to lift the mother board from the watch.
- ⚠ The metal spudger may cause damage to the device, use a [black nylon spudger](#) when possible.

Step 12



- Remove the motherboard.

Step 13 — Battery



- Use the spudger or opening pick to carefully lift the battery from the watch.
 - ① Ensure that the polarity (+/- signs) of the new battery match that of the old battery when inserting new battery into device.

⚠ Avoid using a metal spudger as it may cause damage to the battery or device. Use an opening pick when possible.

To reassemble your device, follow these instructions in reverse order.