

Huawei Watch Jewel Battery Replacement

A watch's battery is responsible for...

Written By: ngan tran



INTRODUCTION

A watch's battery is responsible for maintaining the life-time of the watch. Therefore, a damaged battery will take away from the enjoyment of the watch. This guide highlights the steps required to replace the Huawei Jewel Battery. It can be a relatively difficult process, so follow all steps carefully.



TOOLS:

[Tournevis Torx T3](#) (1)

[Pro Tech Toolkit](#) (1)

150 mm Flex Extension

[Tapis de projet magnétique](#) (1)

[Spatule en métal](#) (1)

[Médiateurs iFixit](#) (1)

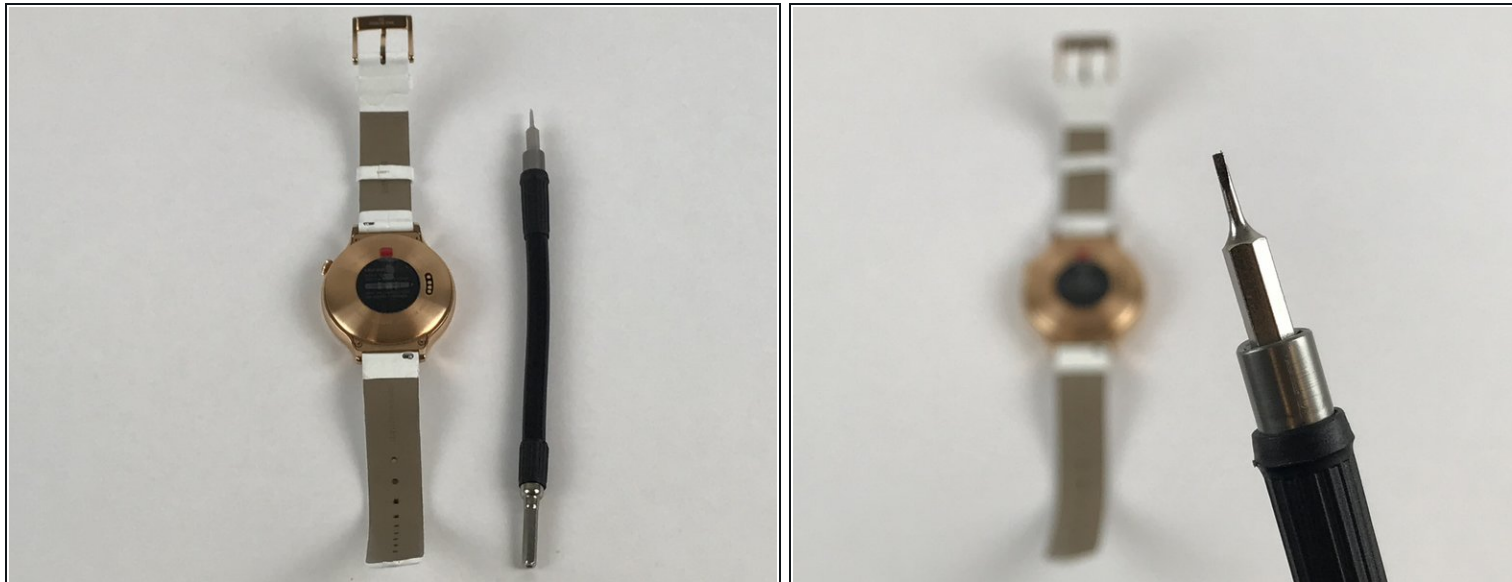
[Pincettes de précision](#) (1)

[Tournevis Torx T2](#) (1)

[Tournevis cruciforme #000](#) (1)

[Spudger \(spatule antistatique\)](#) (1)

Step 1 — Strap



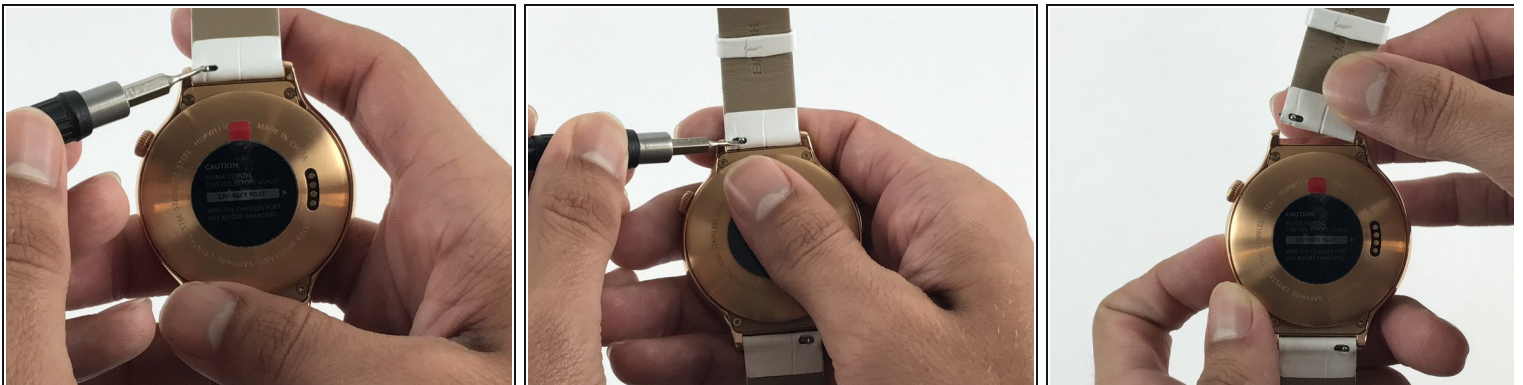
- Begin by laying the watch on a flat, smooth surface.
- ⓘ This will prevent the watch screen from suffering damage.
- Obtain a Flex Extension with a Size 1.0 mm flat-head. In the case of not having said tool, for this model of watch one can use the hands to replace the strap.

Step 2



- Locate the two springs on the back of your watch.
- ❗ The watch comes with two of these springs on each side of the back-face. These are used to release the straps from the body of the watch.

Step 3



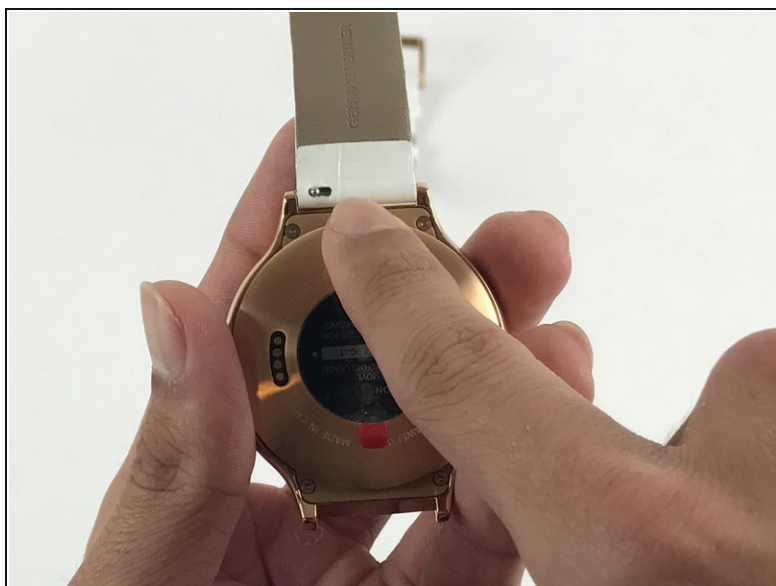
- Use the Flex Extension to push the spring to the right. This will release the strap from the watch head.

Step 4



- Carefully pull the strap away from the watch.

Step 5



- Repeat step 3, this time using the other strap.

Step 6 — Motherboard



- Locate the 4 T3 screws in the back of your watch, and use the T3 Torx Screwdriver to unscrew them.

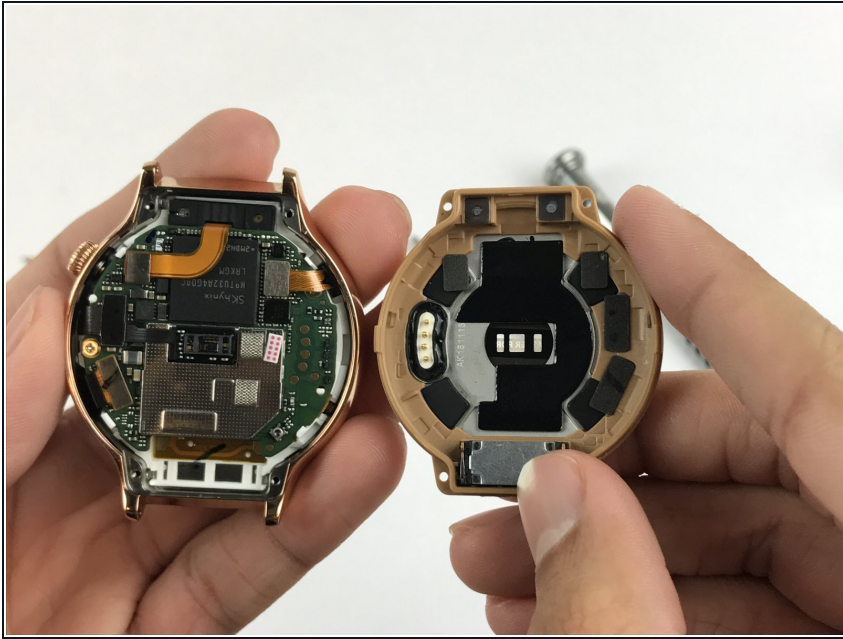
Step 7



- Use the Metal Spudger to pry open the back of your watch.

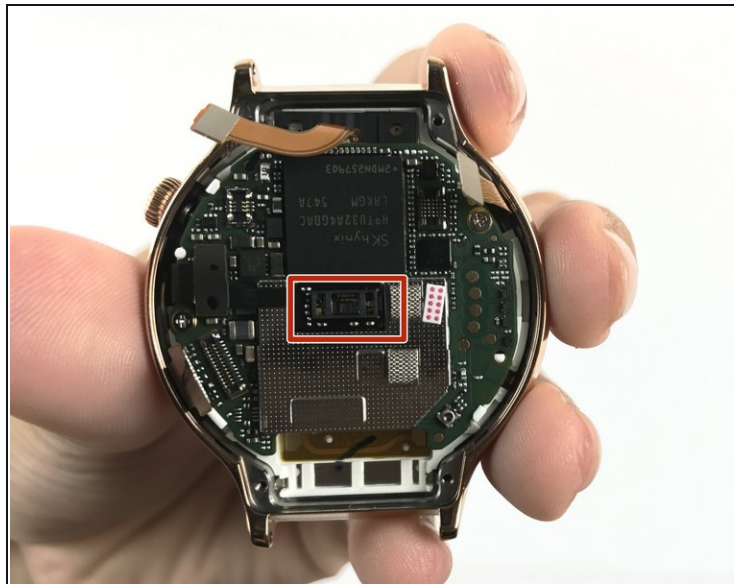
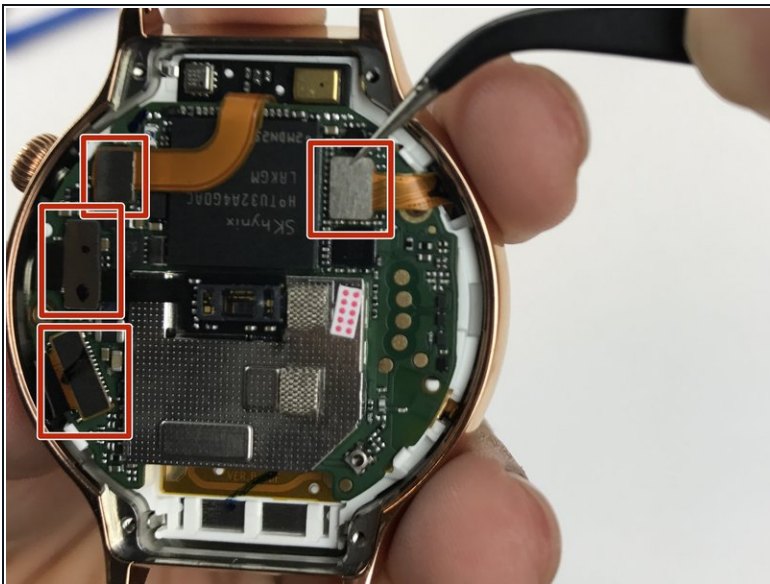
⚠ Make sure the watch is off and not plugged in when prying into the case with the Metal Spudger to avoid the risk of electric shock.

Step 8



- Remove the back case.

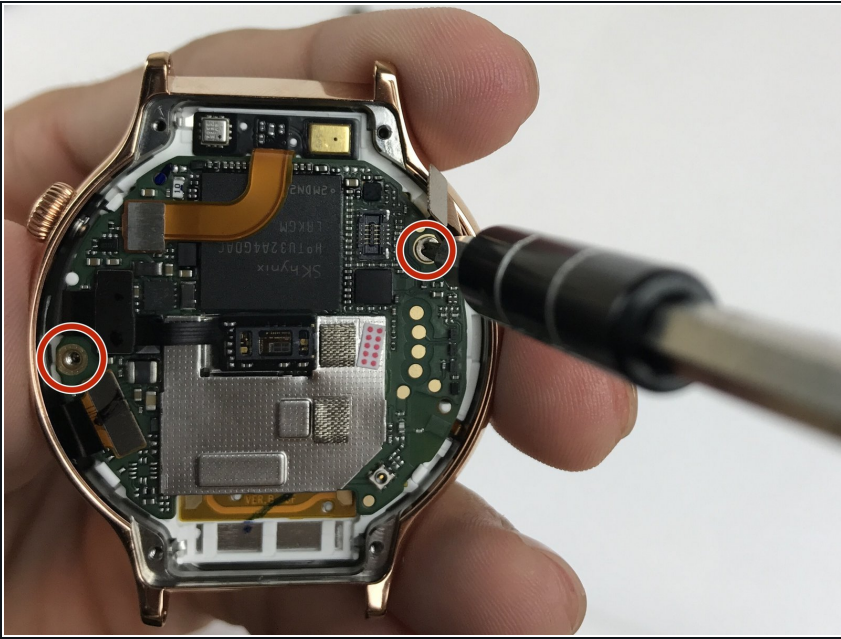
Step 9



- Use tweezers or a nylon spudger to pry up the four press-fit connectors.

i The glued-down connector in the middle is harder to remove than the rest. That is perfectly fine.

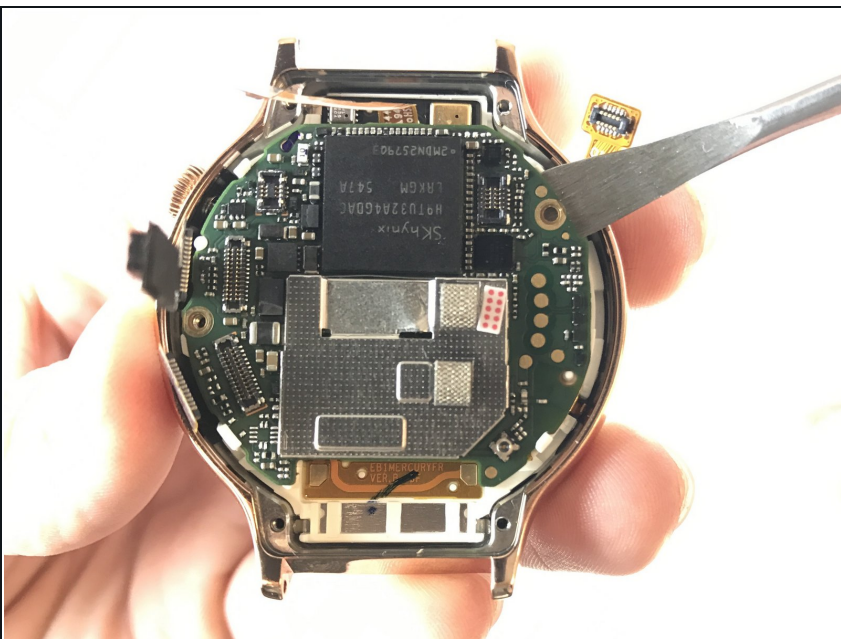
Step 10



- Locate the two Phillips #00 screws holding down the motherboard, and use the Phillips #00 screwdriver to remove them.

✦ Ensure to place these screws separately from the Torx screws, as they can easily be mixed up.

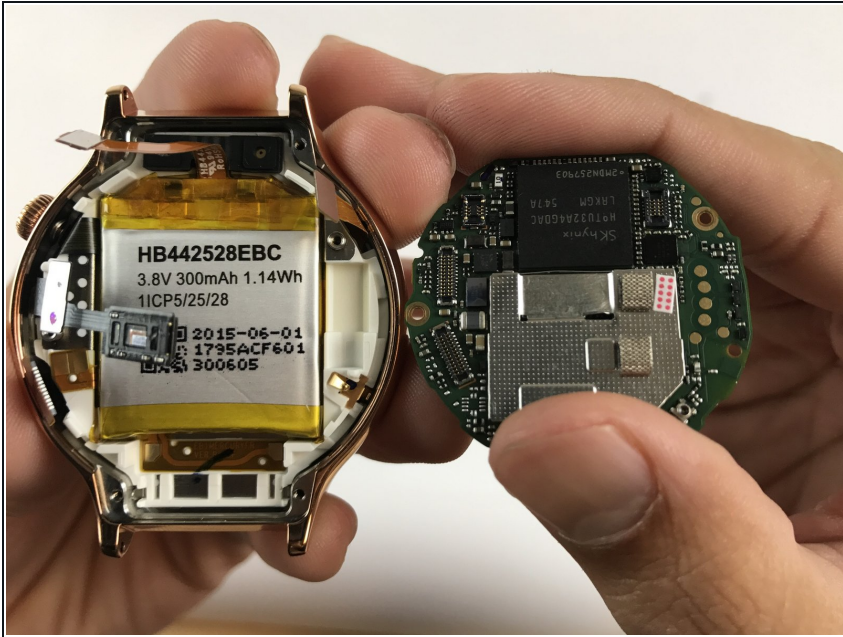
Step 11



- Use the Metal Spudger to lift the mother board from the watch.

⚠ The metal spudger may cause damage to the device, use a [black nylon spudger](#) when possible.

Step 12



- Remove the motherboard.

Step 13 — Battery



- Use the spudger or opening pick to carefully lift the battery from the watch.
- ⓘ Ensure that the polarity (+/- signs) of the new battery match that of the old battery when inserting new battery into device.

⚠ Avoid using a metal spudger as it may cause damage to the battery or device. Use an [opening pick](#) when possible.

To reassemble your device, follow these instructions in reverse order.