



Fujifilm FinePix F505EXR Selector Button Circuit Board Replacement

During this guide you will learn how to get to...

Written By: Matthew Kilmonis



INTRODUCTION

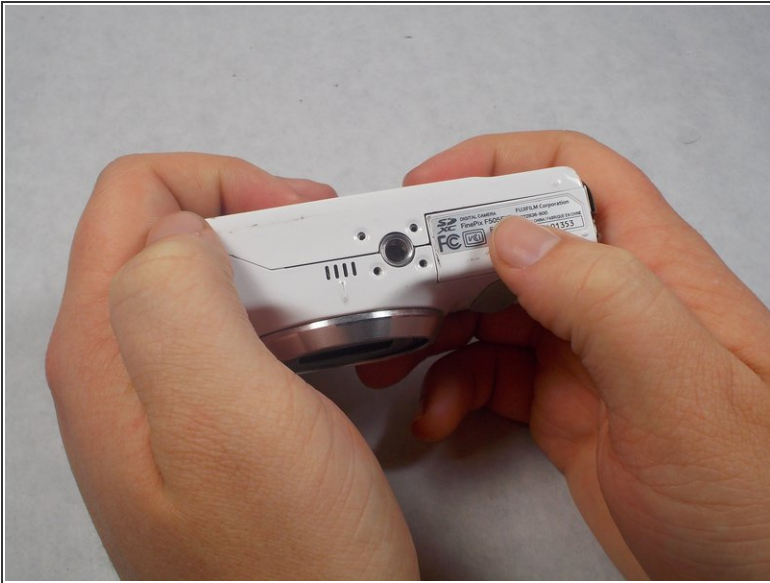
During this guild you will learn how to get to the inner components of the camera and how to remove the button circuit board.



TOOLS:

- [Tweezers](#) (1)
 - [Phillips #1 Screwdriver](#) (1)
-

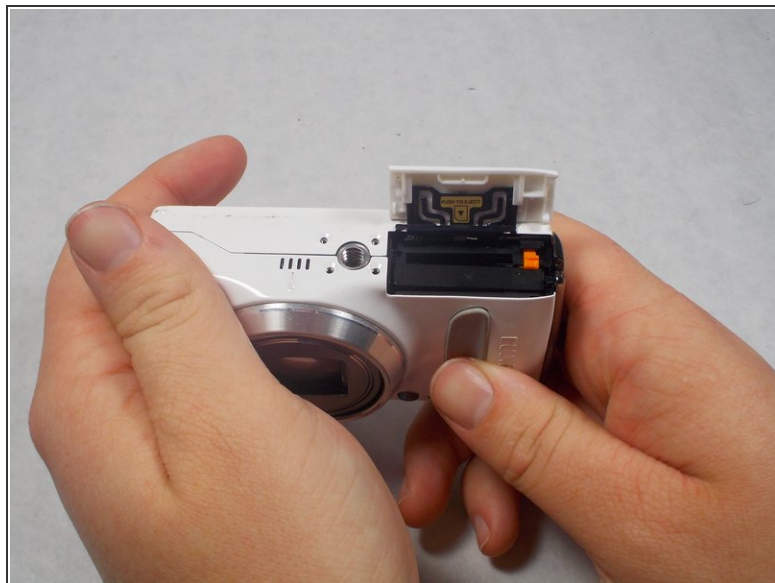
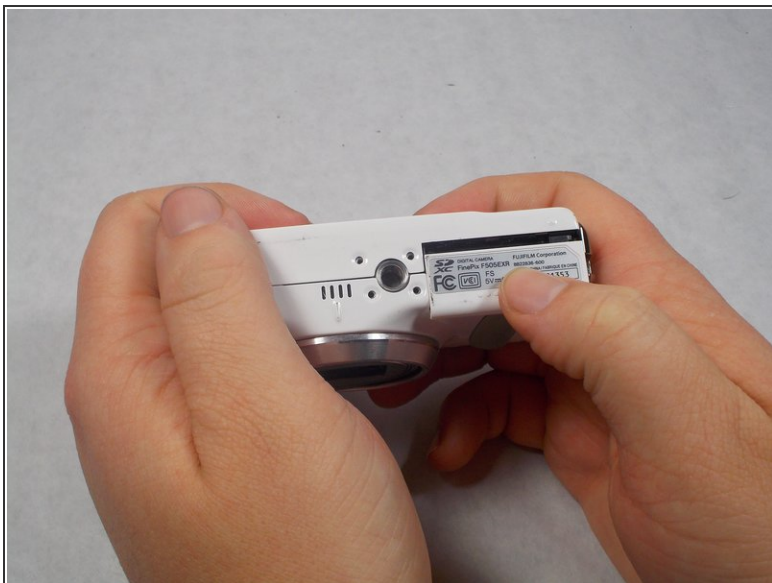
Step 1 — Battery



⚠ Power the device down before taking any other actions.

- Hold the camera with the lens facing towards yourself.
- Turn the camera upside down and place your right thumb on the battery chamber cover.

Step 2



- Hold the camera, then pull the battery chamber towards yourself with your right thumb.
- Pull the cover entirely out and release it to reveal the battery.

Step 3



- Locate the orange battery latch that holds the battery in place.
- Use your finger to push the latch away from yourself to release the battery.
- Remove the battery manually from the battery chamber.
- Place the battery into a charger if it is dead.
- ⓘ Remove battery before performing any other repairs.

Step 4



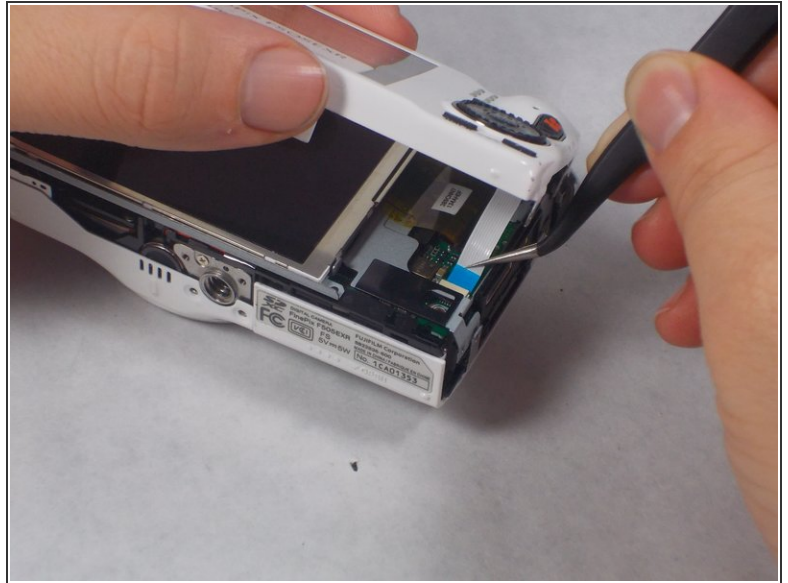
- Replace defective battery if previous steps fail
- Contact support on the Fujifilm website for further assistance

Step 5 — Selector Button Circuit Board



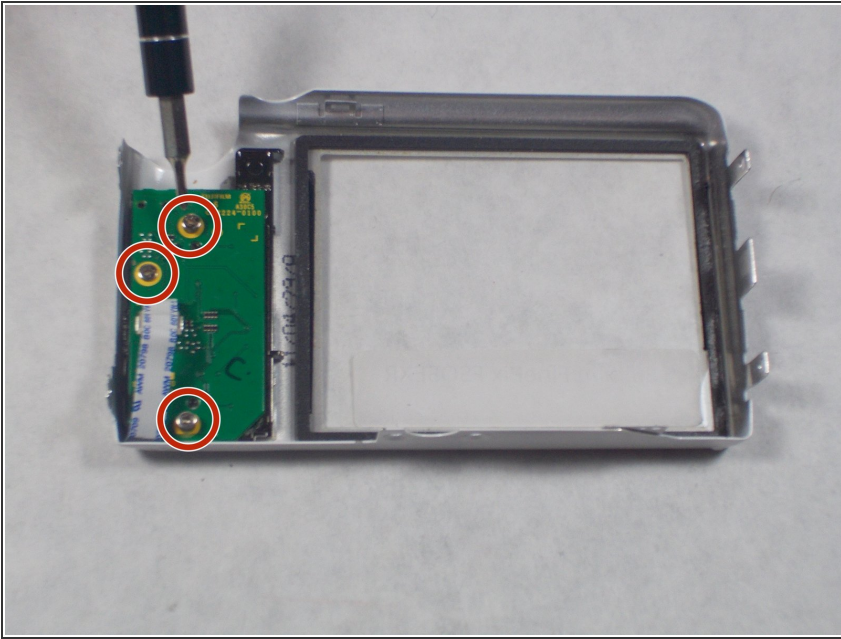
- Remove four 2.5mm Phillips #1 screws on the bottom of the camera near where the camera mount attaches.
- Remove two 5.1mm Phillips #1 screws on the left side of the camera relative to the LCD screen.
- Remove two 5.1mm Phillips #1 screws on the right side of the camera relative to the LCD screen nearest to the mode wheel.

Step 6



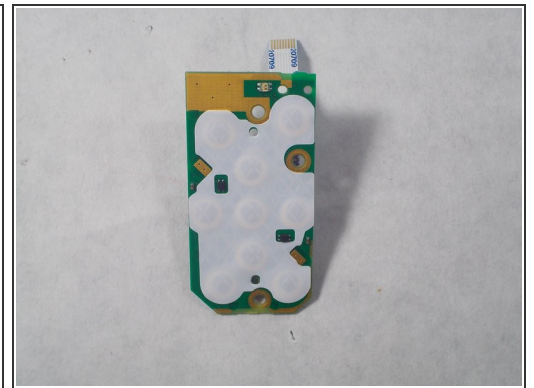
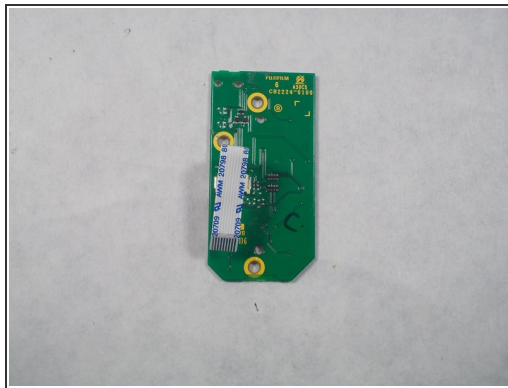
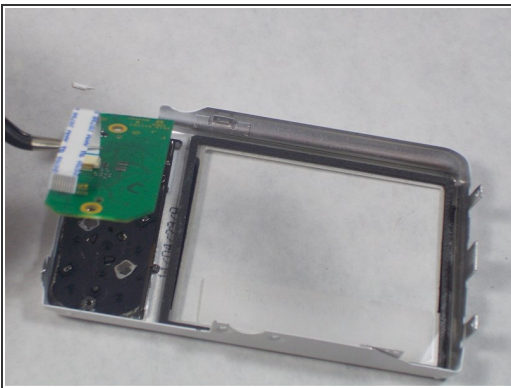
- Place the camera lens face down with the LCD screen face up on a flat surface, or hold it. Carefully lift the camera's back cover approximately 1 inch.
 - Carefully lift the ribbon clamp connector back using the tweezers and remove the blue ribbon.
- ⚠ Do NOT pull on ribbon if the ribbon clamp connector still grasps the blue ribbon. This could cause severe damage to the ribbon.**
- i** If you are replacing the LCD monitor you can skip steps 6 and 7 for the selector button circuit board guide and go directly to the LCD monitor repair guide.
 - i** If you are replacing the Mode Dial you can skip steps 6 and 7 for the selector button circuit board guide and go directly to the Mode Dial repair guide.

Step 7



- ① Remove the back of the camera case and place it on a flat surface with the selector button circuit board facing up.
- Remove the three 3.5mm Phillips #1 screws located on the chip seen in the image.

Step 8



- Lift the chip with tweezers to remove it from the other remaining components.

To reassemble your device, follow these instructions in reverse order.