



# Fujifilm FinePix F505EXR LCD monitor

## Replacement

In this guide it will be outlined on how to...

Written By: Brittany Perkins



# INTRODUCTION

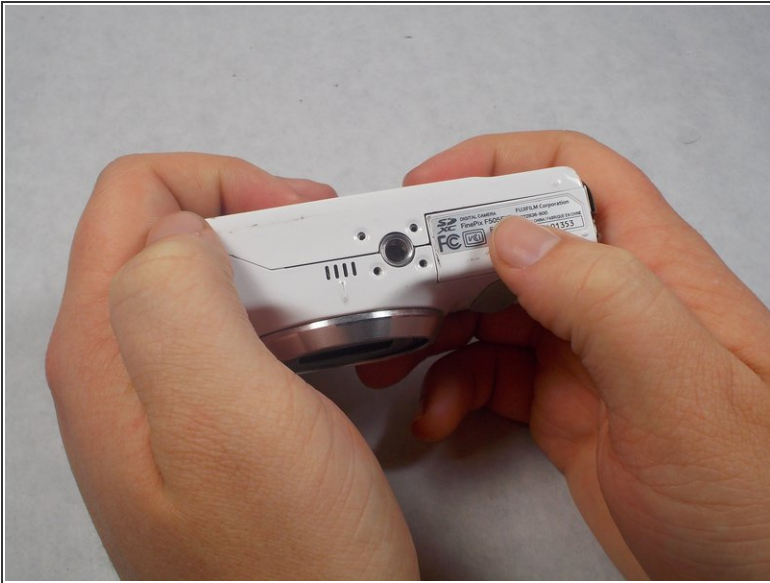
In this guide it will be outlined on how to replace or disassemble an LCD screen display. A LCD screen usually needs to be replaced if it is not displaying the right coloration on the screen for example a yellowish tint. A LCD screen can also be replaced if it does not show anything at all.



## TOOLS:

- [Phillips #1 Screwdriver](#) (1)
  - [Tweezers](#) (1)
-

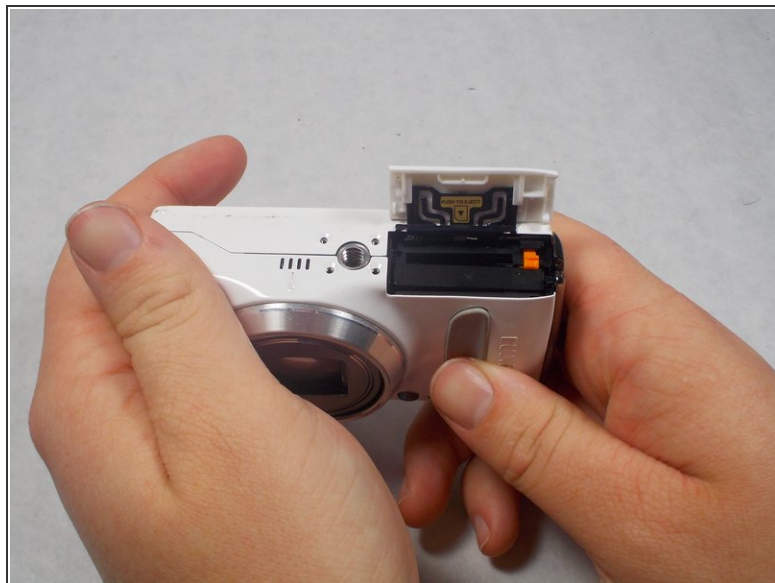
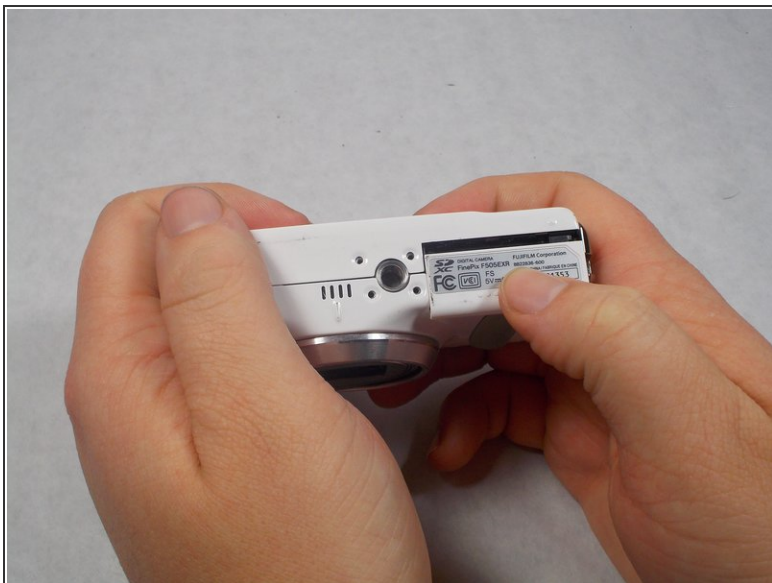
## Step 1 — Battery



**⚠ Power the device down before taking any other actions.**

- Hold the camera with the lens facing towards yourself.
- Turn the camera upside down and place your right thumb on the battery chamber cover.

## Step 2




- Hold the camera, then pull the battery chamber towards yourself with your right thumb.
- Pull the cover entirely out and release it to reveal the battery.



## Step 3



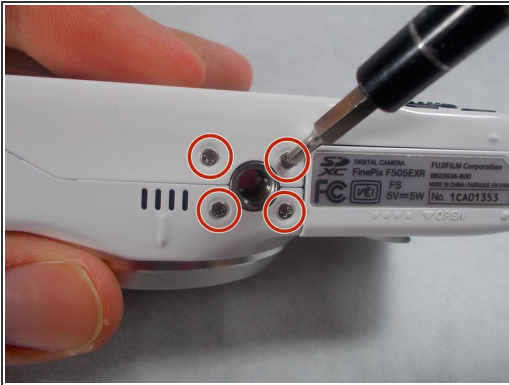
- Locate the orange battery latch that holds the battery in place.
  - Use your finger to push the latch away from yourself to release the battery.
  - Remove the battery manually from the battery chamber.
  - Place the battery into a charger if it is dead.
-  Remove battery before performing any other repairs.

## Step 4



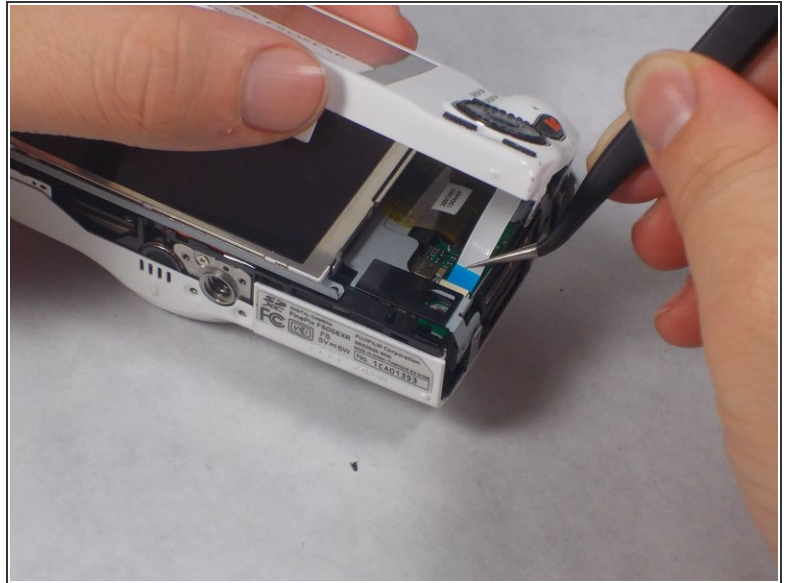
- Replace defective battery if previous steps fail
- Contact support on the Fujifilm website for further assistance

## Step 5 — Selector Button Circuit Board



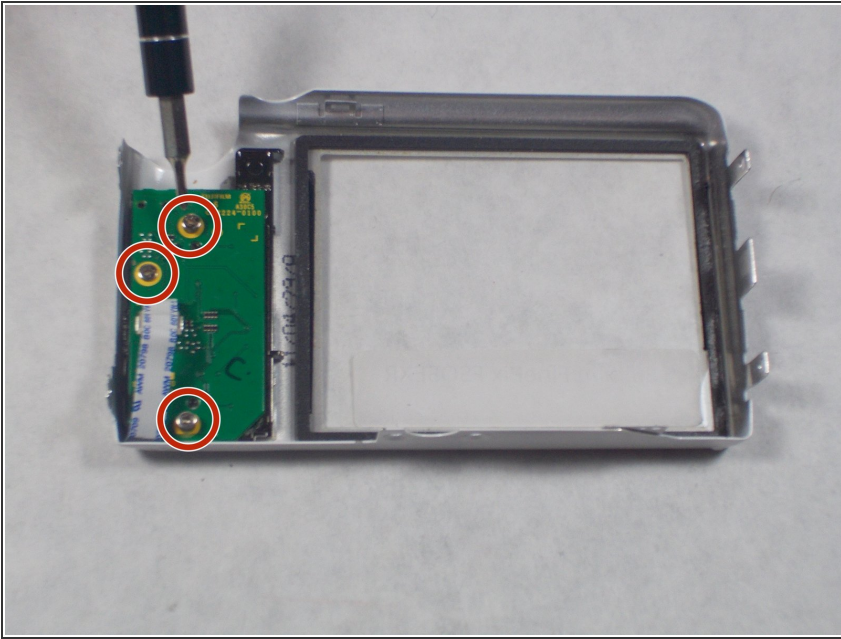
- Remove four 2.5mm Phillips #1 screws on the bottom of the camera near where the camera mount attaches.
- Remove two 5.1mm Phillips #1 screws on the left side of the camera relative to the LCD screen.
- Remove two 5.1mm Phillips #1 screws on the right side of the camera relative to the LCD screen nearest to the mode wheel.

## Step 6



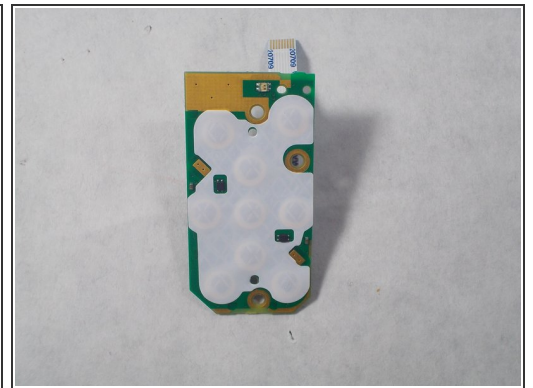
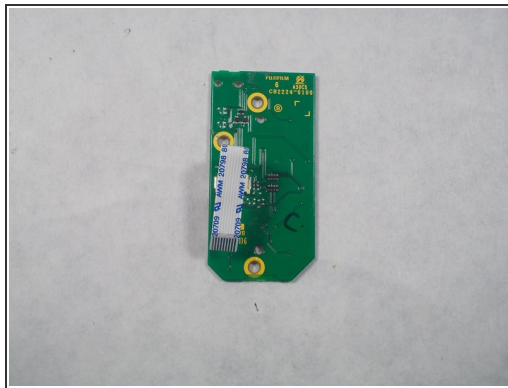
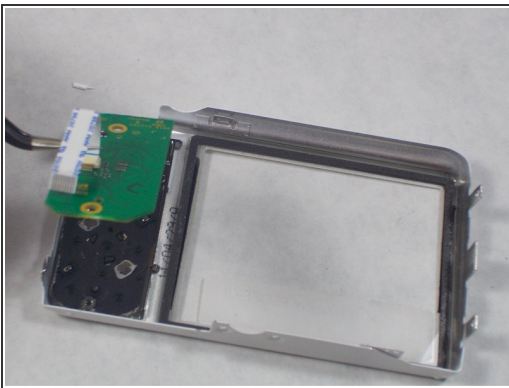
- Place the camera lens face down with the LCD screen face up on a flat surface, or hold it. Carefully lift the camera's back cover approximately 1 inch.
  - Carefully lift the ribbon clamp connector back using the tweezers and remove the blue ribbon.
- ⚠ Do NOT pull on ribbon if the ribbon clamp connector still grasps the blue ribbon. This could cause severe damage to the ribbon.**
- i** If you are replacing the LCD monitor you can skip steps 6 and 7 for the selector button circuit board guide and go directly to the LCD monitor repair guide.
  - i** If you are replacing the Mode Dial you can skip steps 6 and 7 for the selector button circuit board guide and go directly to the Mode Dial repair guide.

## Step 7



- i Remove the back of the camera case and place it on a flat surface with the selector button circuit board facing up.
- Remove the three 3.5mm Phillips #1 screws located on the chip seen in the image.

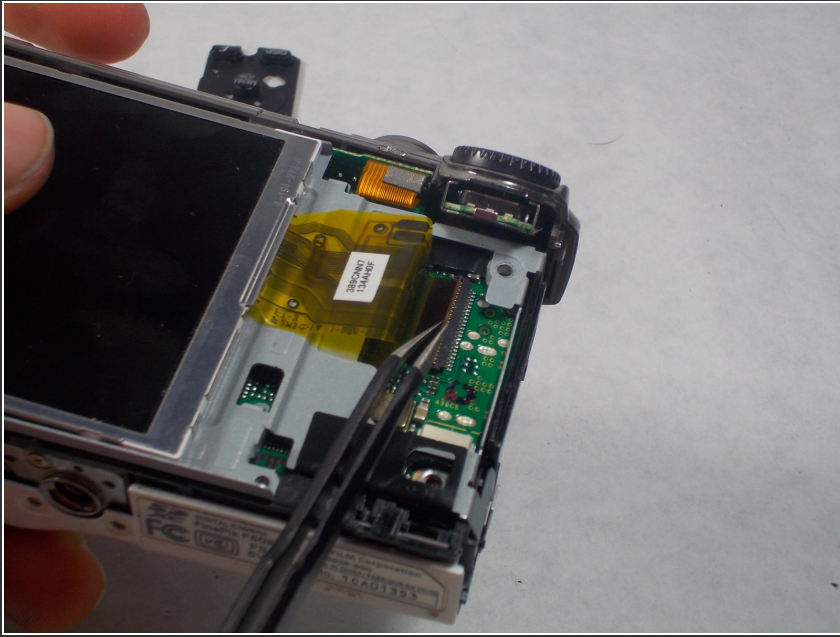
## Step 8



- Lift the chip with tweezers to remove it from the other remaining components.



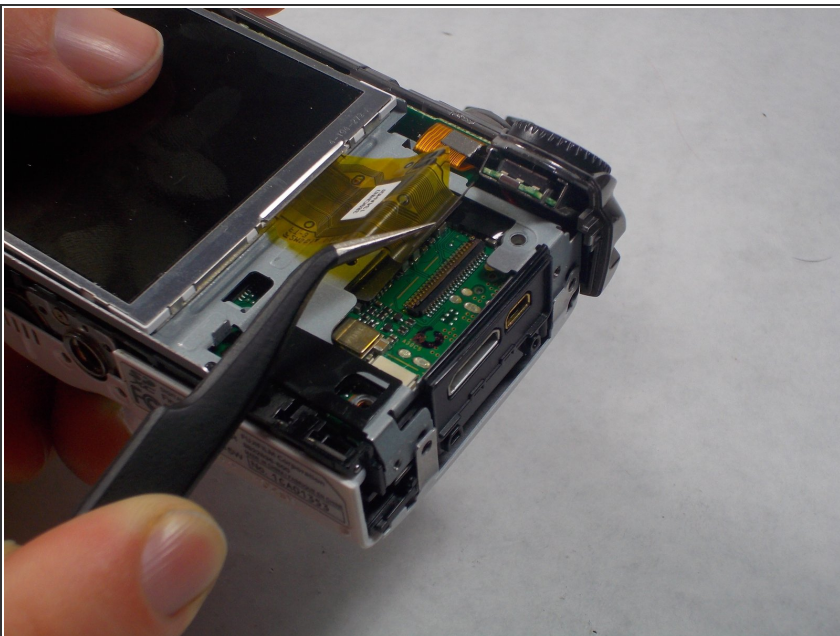
## Step 9 — LCD monitor



- With the LCD monitor facing upwards, use the tweezers to lift the ribbon clamp which will release the grip on the ribbon.

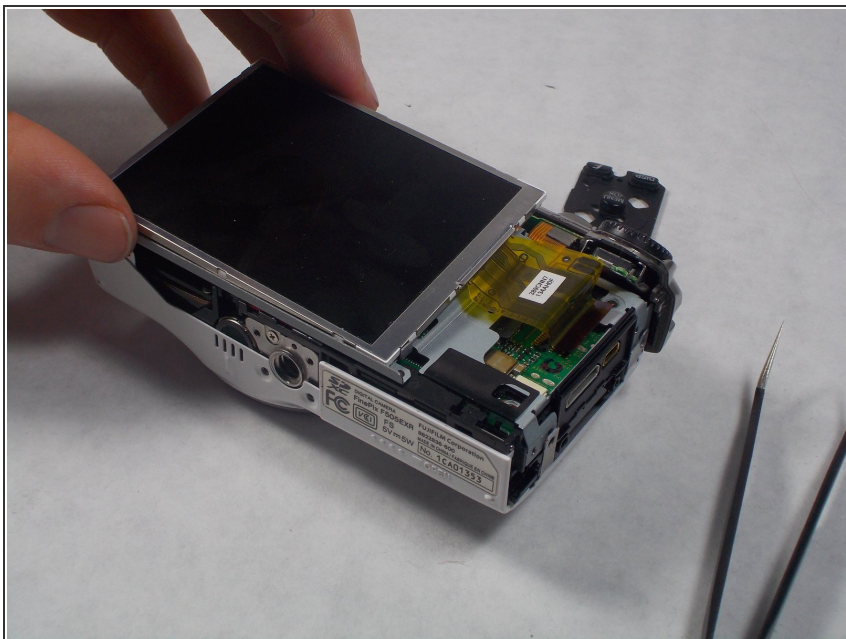
**⚠ Failure to do this can result in major damage to the connection.**

## Step 10



- With the tweezers pull the ribbon away from the connector, freeing it and allowing it to move.

## Step 11



- With your fingers around the edges of the LCD monitor, lift it away from the camera.

To reassemble your device, follow these instructions in reverse order.