



Razer DeathAdder Chroma Outer Casing Replacement

Remove the casing of the mouse to access the inner components.

Written By: Corrie Tung



INTRODUCTION

This is a prerequisite for all DeathAdder Chroma replacement guides.



TOOLS:

- [Phillips #0 Screwdriver](#) (1)
 - [Spudger](#) (1)
-

Step 1 — Outer Casing



- ❗ Opening the mouse casing will void any warranty that exists for the mouse.
- Turn the mouse over so the bottom is facing up.

Step 2



- Use the blunt end of the spudger to pry the adhesive rubber pads from the top left and right edges.

Step 3



- Use a Phillips #0 screwdriver to remove two 6.7 mm screws.

Step 4



- Use your fingers to identify the location of the screw under the bottom label.

Step 5



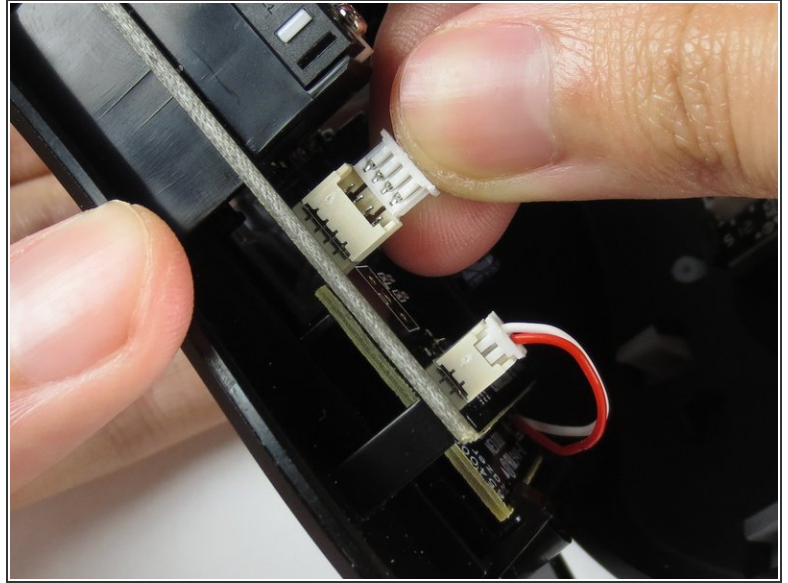
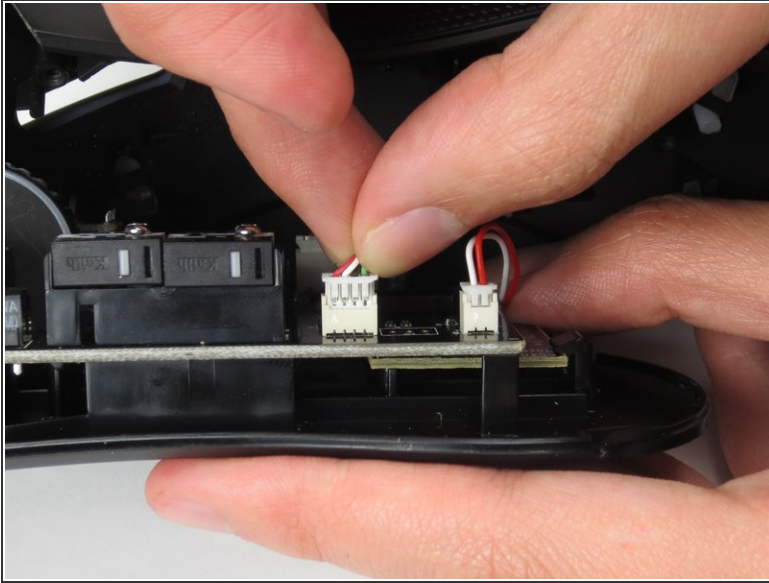
- Use a Phillips #0 screwdriver to remove one 6.7 mm screw.
- ⓘ Clear the label away from around the screw for easier removal.

Step 6



- Turn the mouse over so the bottom is facing down.
- Separate the top casing from the bottom base by pulling the top casing upwards.
- ⚠ Separating the casing too quickly could damage the ribbon connector between the motherboard and the LED lights.

Step 7



- Disconnect the ribbon connector between the motherboard and the LED lights by pulling upward.

 Pulling too hard could damage the wire connections.

To reassemble your device, follow these instructions in reverse order.