



Toshiba Satellite A660-ST3NX2X Battery Replacement

This replacement guide is to walk you through a...

Written By: Megan Murrell



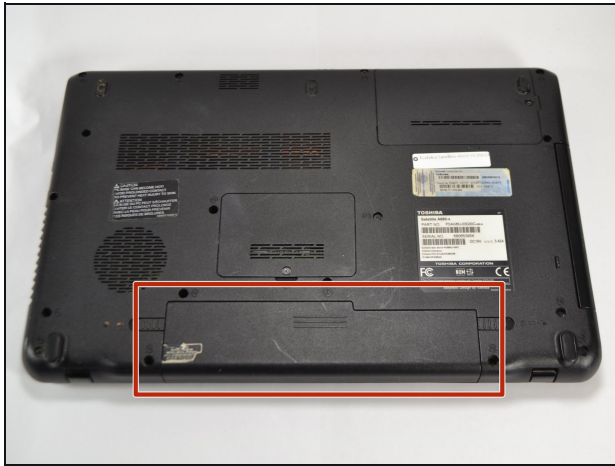
INTRODUCTION


This replacement guide is to walk you through a battery replacement on your Toshiba Satellite A660-ST3NX2X. Before starting this replacement, make sure you have a replacement battery that is made for this computer. Also, make sure the computer is powered off and completely shut down before completing this replacement.

PARTS:

[Toshiba Satellite A660 and A665 Battery \(1\)](#)

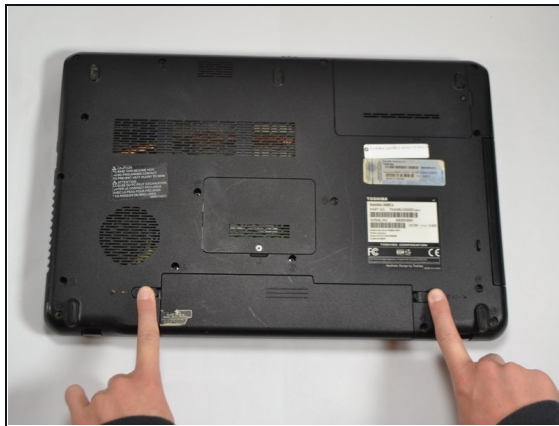
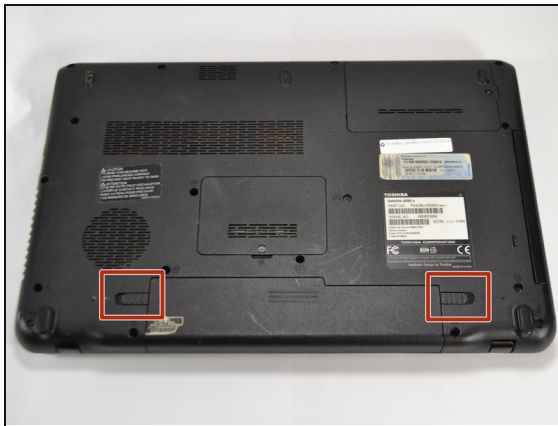
Step 1 — Battery



 **Unplug all cables and other devices from the computer before starting this replacement.**

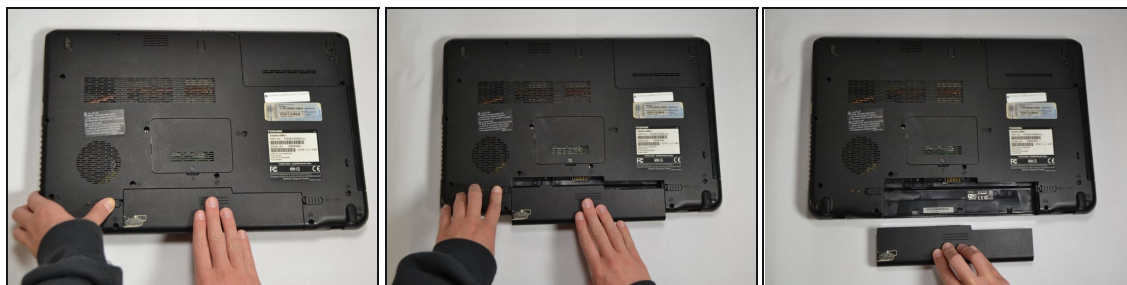
- Turn the computer over, so the screen is facing down and the battery is positioned in front of you.

Step 2



- Locate the two sliding tabs on either side of the battery.
- Using both hands, place one finger on each tab and slide them to the sides and away from each other.

Step 3



- Pull the battery out, keeping the tabs pushed to the side.

i The right tab on this laptop stayed pushed to the right without needing to be held in place.

To reassemble your device, follow these instructions in reverse order.