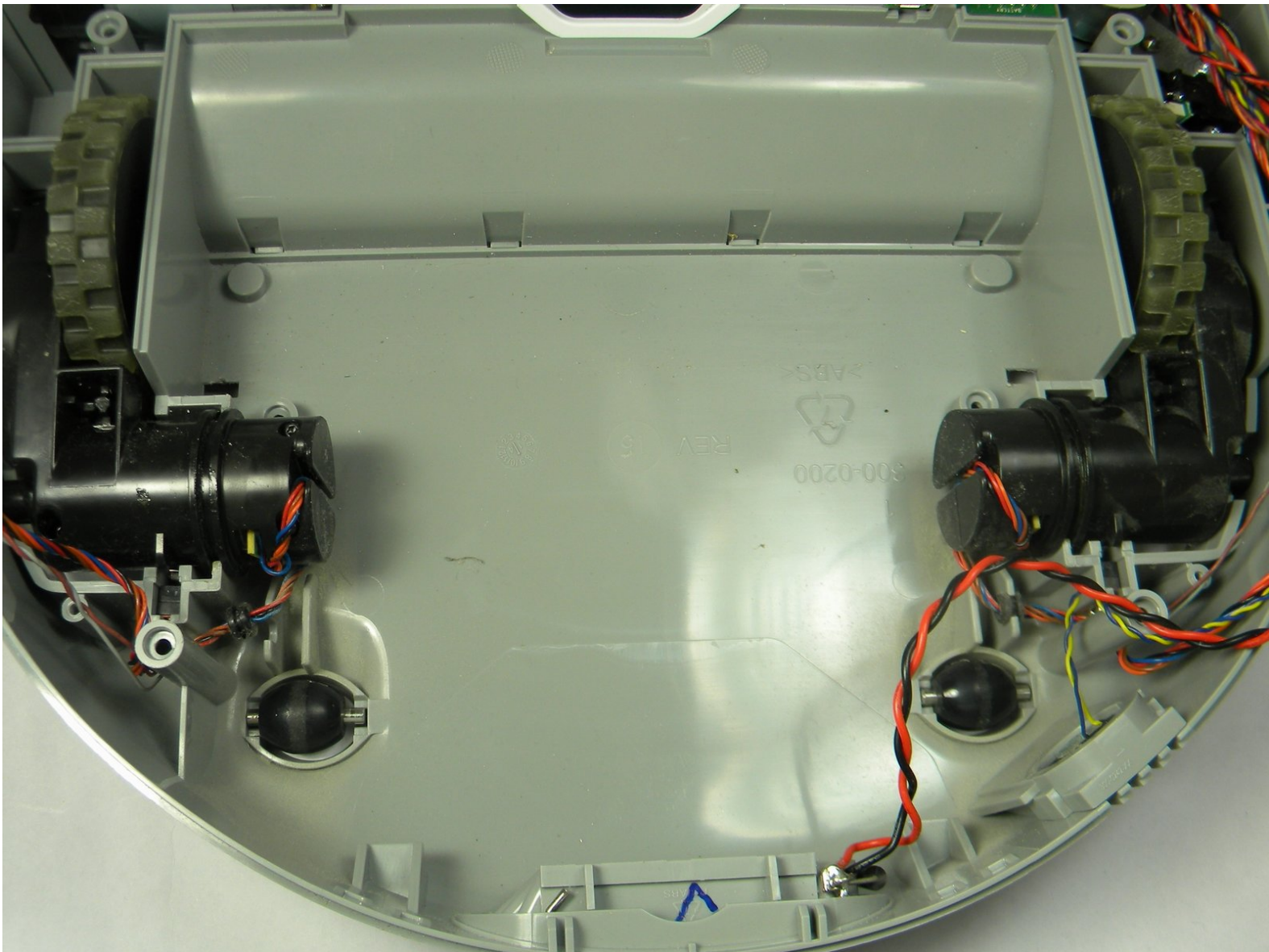




# Neato Botvac 65 Wheel Motors Replacement

This guide will show you how to replace the left and right wheel and motor assembly on the Neato Botvac 65.

Written By: Joseph Caton



# INTRODUCTION

Step by Step instructions to replace Neato Botvac 65 wheel motors.



## TOOLS:

- [T10 Torx Screwdriver](#) (1)
- [Flathead 3/32" or 2.5 mm Screwdriver](#) (1)
- [Soft Cloth](#) (1)



## PARTS:

- [neato botvac 65 wheel motor](#) (1)

## Step 1 — Battery



- Flip the device upside down.
- Locate the two (2) 20mm screws on the battery plate.

## Step 2



- Use the Phillips #1 screwdriver to loosen both screws.

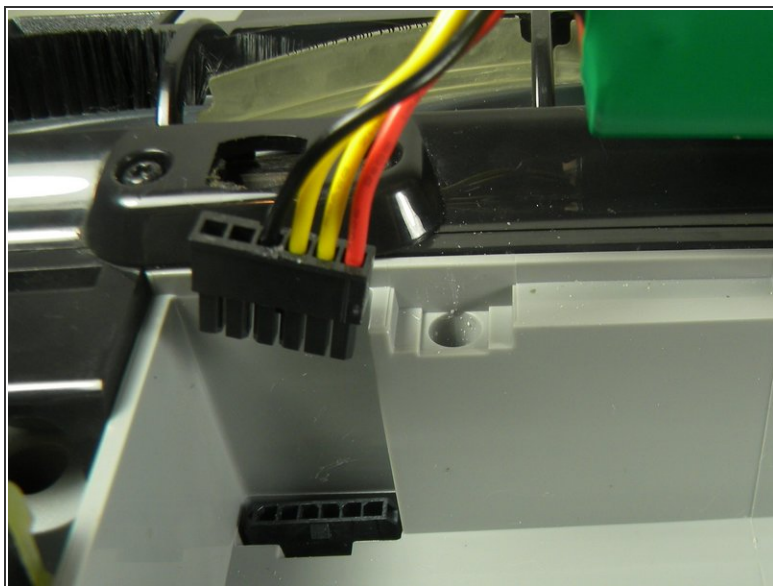
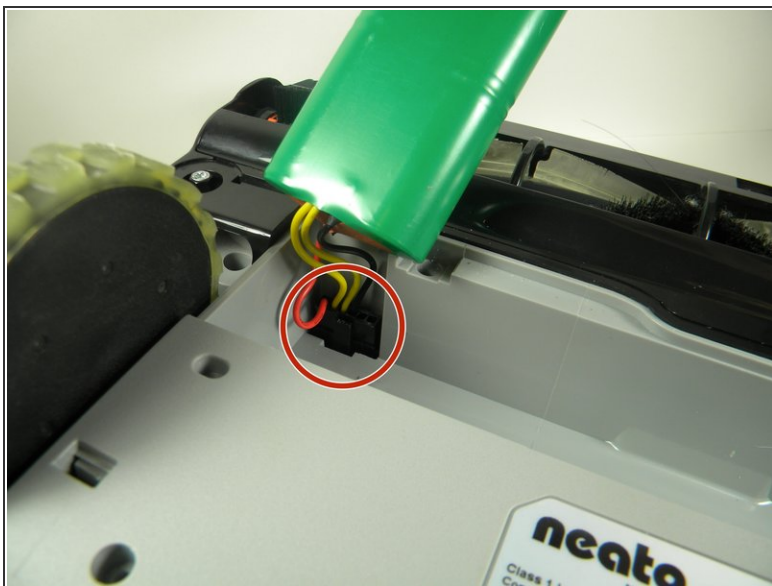


## Step 3



- Remove the battery back plate to reveal the battery.

## Step 4



- Disconnect the current battery by pulling the connector from the base and pushing on the clip.

## Step 5 — Brush



- Flip the device upside down.

## Step 6



- Use the screwdriver to take off the four (4) 10mm screws located near the brush which secure the plastic guard.



## Step 7



- Remove the plastic brush guard.
- Pull off the plastic covering the brush.

## Step 8



- Lift the brush to clean or replace.

## Step 9 — Top Cover



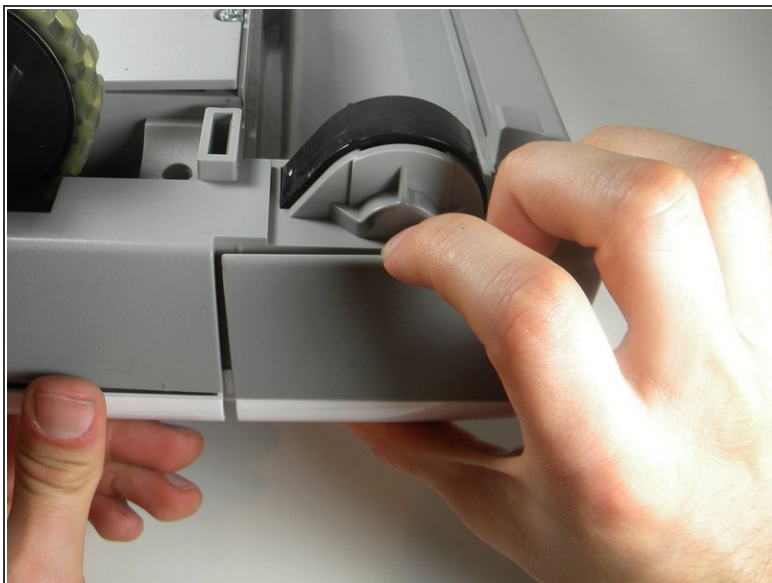
- Flip device upside down.
- Locate the six (6) screw connected to the top cover.

## Step 10



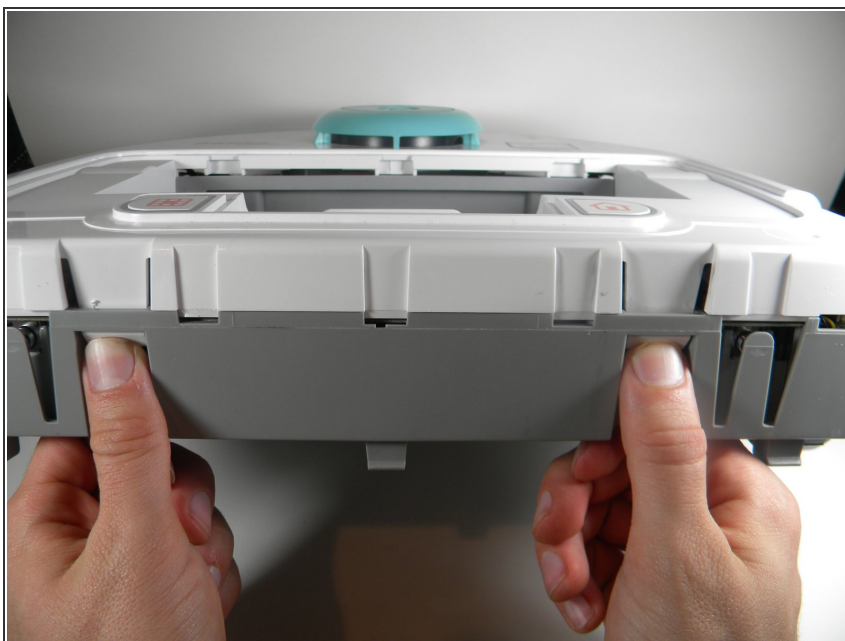
- Remove eight (8) star screws using the T10 bit.

## Step 11



- Pull off one side of the brush front cover, and then pull off the other.

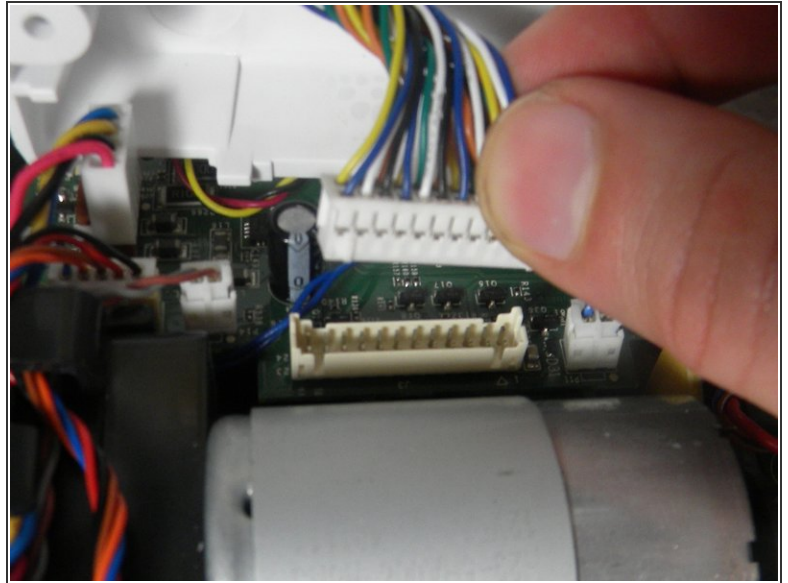
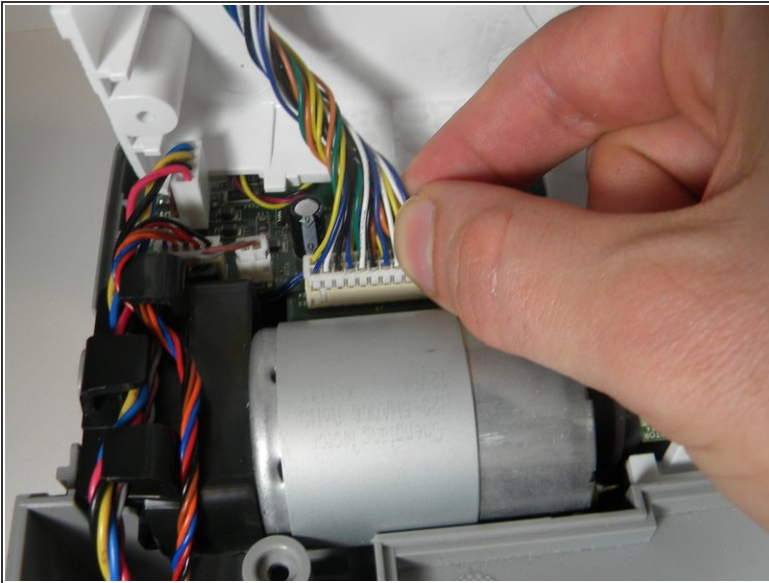
## Step 12



- Flip right side up and turn around.
- Find the two clips connecting the top cover to the body of the device.

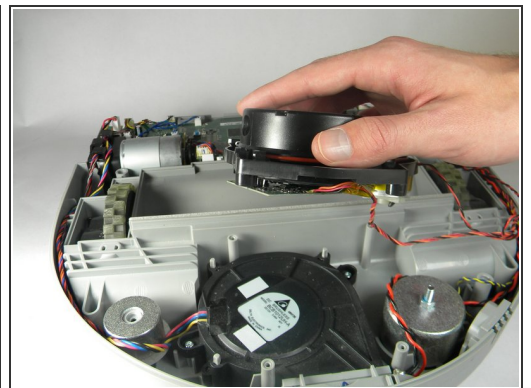
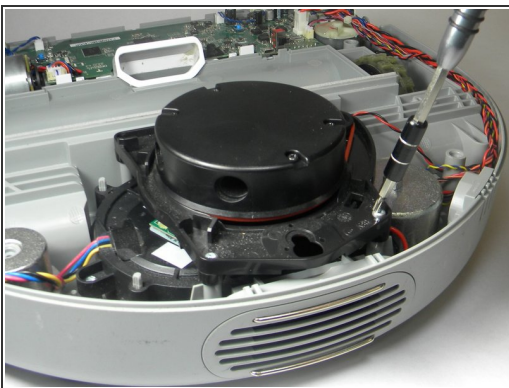


## Step 13



- Lift up on the top cover gently.
- Disconnect the connector from the motherboard to detach the top cover from the robot.

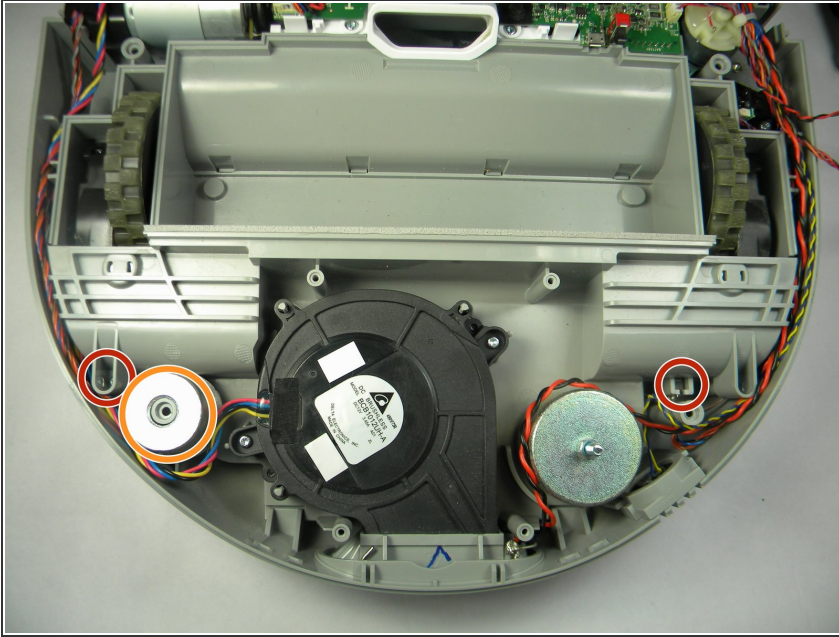
## Step 14 — Wheel Motors



- Remove four (4) 10mm 'star' screws using the T10 bit from the base plate where the rotating infrared sensor is located.

⚠ Carefully place the sensor on or near the robot without pulling the wires out.

## Step 15



- Remove two (2) screws using the T10 bit that connects the plastic protector over the wheel motor.
- Pull up on the metal weight to remove.

## Step 16

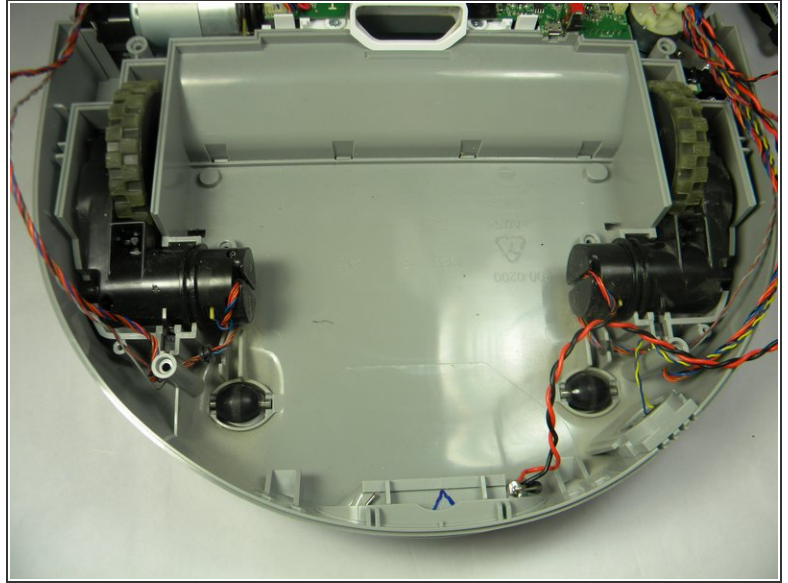


⚠ Flip the botvac over being careful not to drop the IR sensor or cause damage to the wires.

- Using a flat-head screw driver and a cloth for protection, press on the clips until they recede into the botvac.

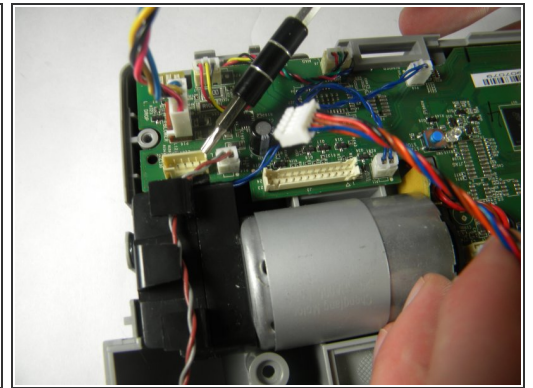
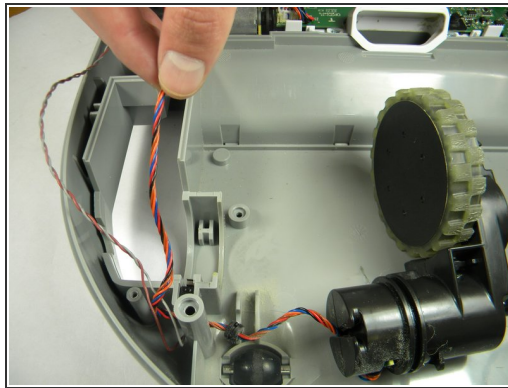
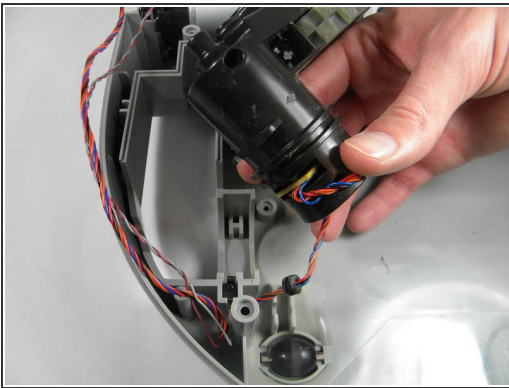


## Step 17



- Flip the robot back over(right-side up).
- Carefully remove the plastic cover that protects the motor.

## Step 18



- Carefully remove the motor that you wish to replace.
- Trace the wires that are connected to the motor back to the motherboard.
- Disconnect the connector from the motherboard for the respective motor you're replacing.

To reassemble your device, follow these instructions in reverse order.

This document was generated on 2020-11-17 02:47:15 PM (MST).



