



Samsung S760 Front and Back Case Replacement Guide

This guide will help you in removing the front and back cases of the device.

Written By: David Sepulveda



INTRODUCTION

How to remove the front and back cases of the device



TOOLS:

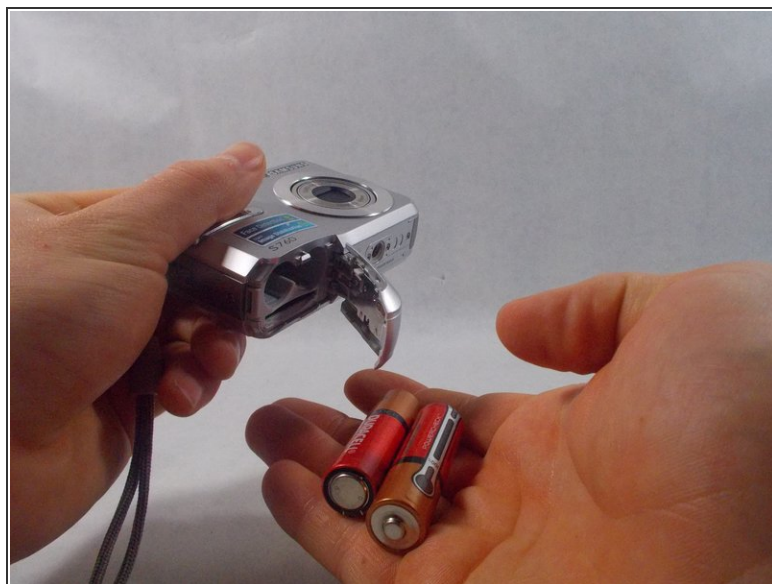
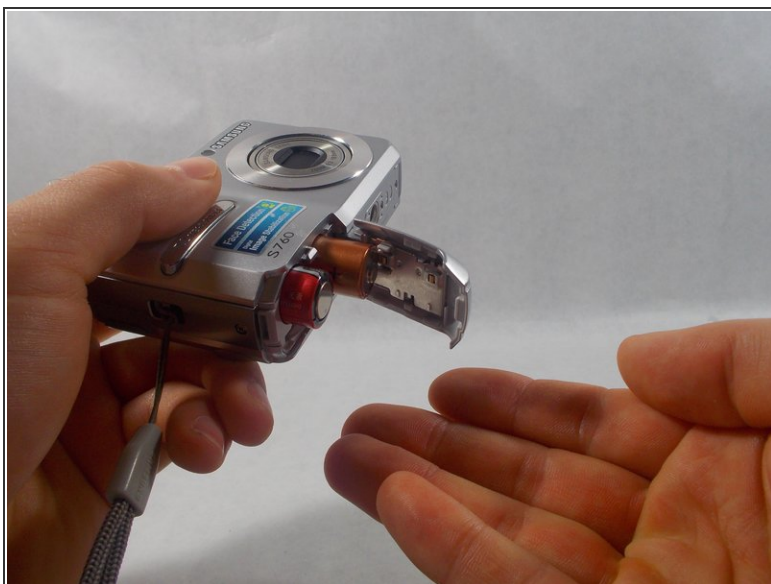
- [Phillips #000 Screwdriver](#) (1)
 - [iFixit Opening Tools](#) (1)
-

Step 1 — Battery



- Placing your thumb on the battery cover, push outwards, away from the camera in the direction the arrow is pointing. If done correctly when it's completely unhooked, the latch will open.

Step 2



- Tip the camera as to gently slide the batteries out of the camera.

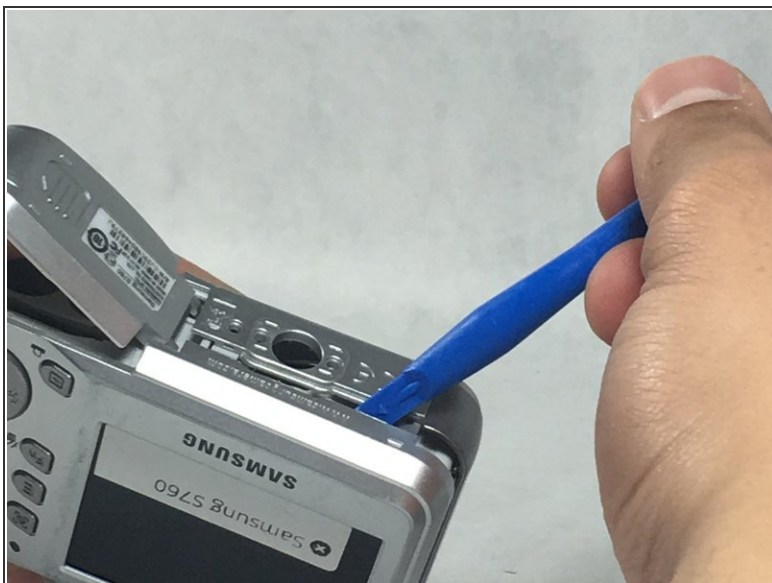
Step 3 — Front and Back Case



i All screws in this camera are removed using the Phillip Screwdriver #000 bit. Also, all dimensions included refer to screw *lengths*.

- Locate and remove the six 4mm screws on the sides of the camera.

Step 4



- Use the plastic opening tool to pry open the back case, following alongside the edge of the case if need be.

Step 5



- Once the back case is removed, use the plastic opening tool to gently pry off the front case.

This will be used as a prerequisite to other guides. To reassemble your device, follow these instructions in reverse order.