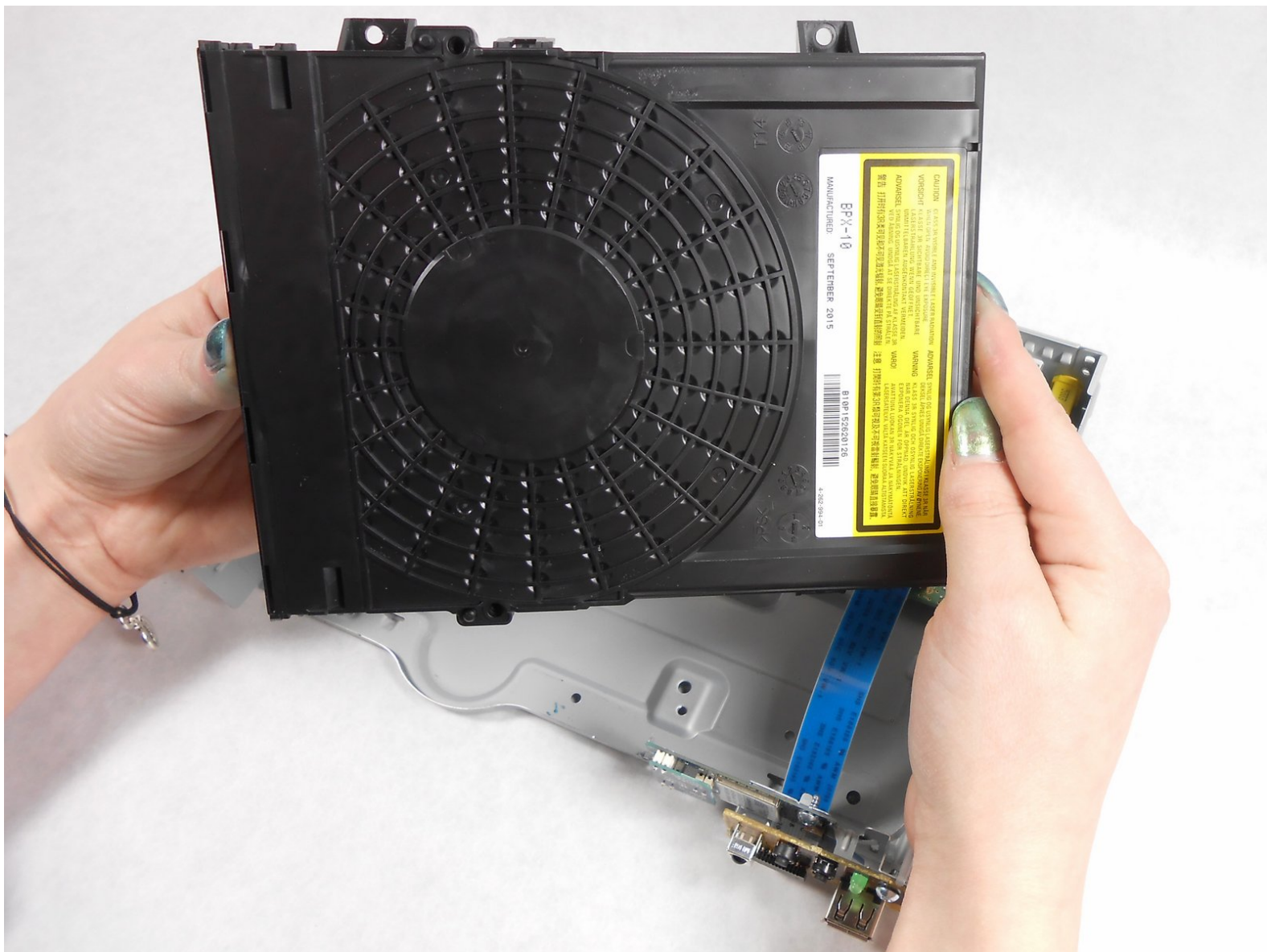




Sony BDP BX350 Disc Assembly Replacement

Use this guide to remove the covers and disc assembly leading to replacement of other components of the Sony BDP BX350.

Written By: Kristen Vezina



INTRODUCTION

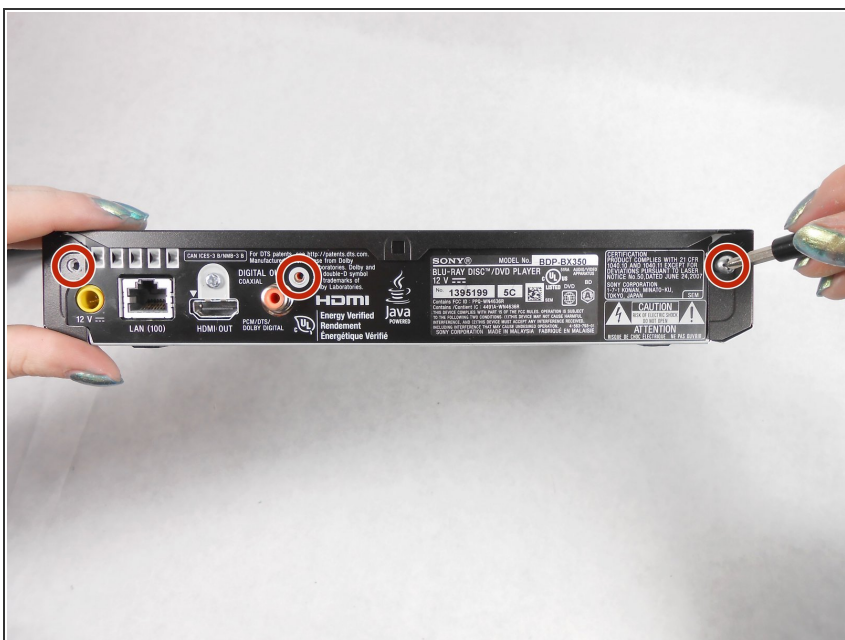
This is a step-by-step guide on how to open up your Sony BDP BX350 and remove the disc tray assembly. This guide is needed if the disc tray or disc lens are faulty. Make sure the device is unplugged before starting this guide.



TOOLS:

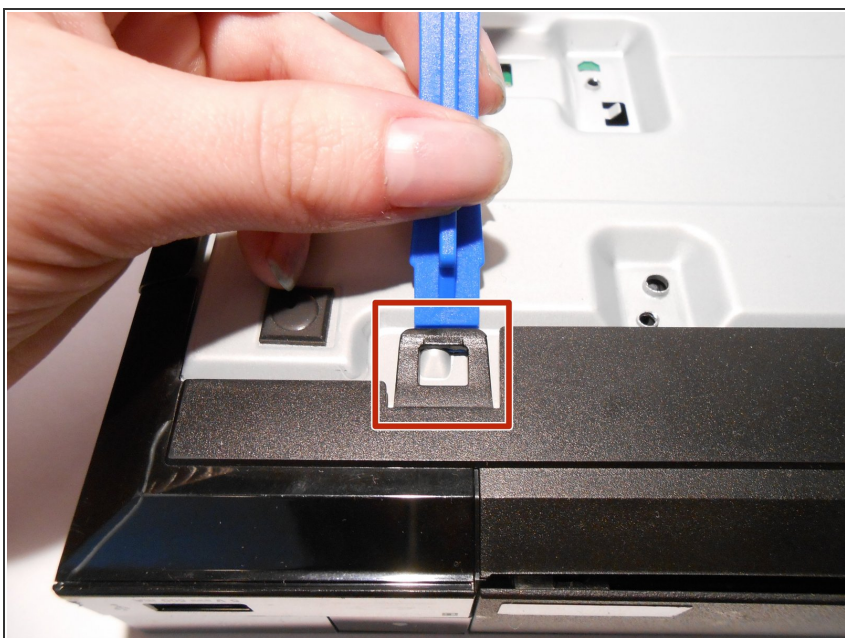
- [64 Bit Driver Kit](#) (1)
 - [iFixit Opening Tools](#) (1)
 - [J1 Screwdriver Bit](#) (1)
-

Step 1 — Disc Assembly



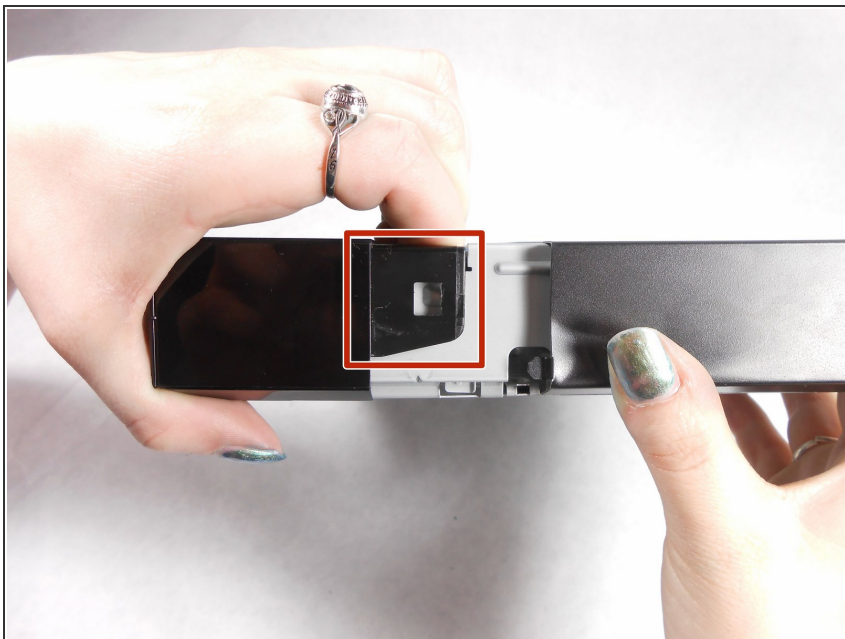
- Remove the three 10mm Philips head screws on the back of the player.

Step 2



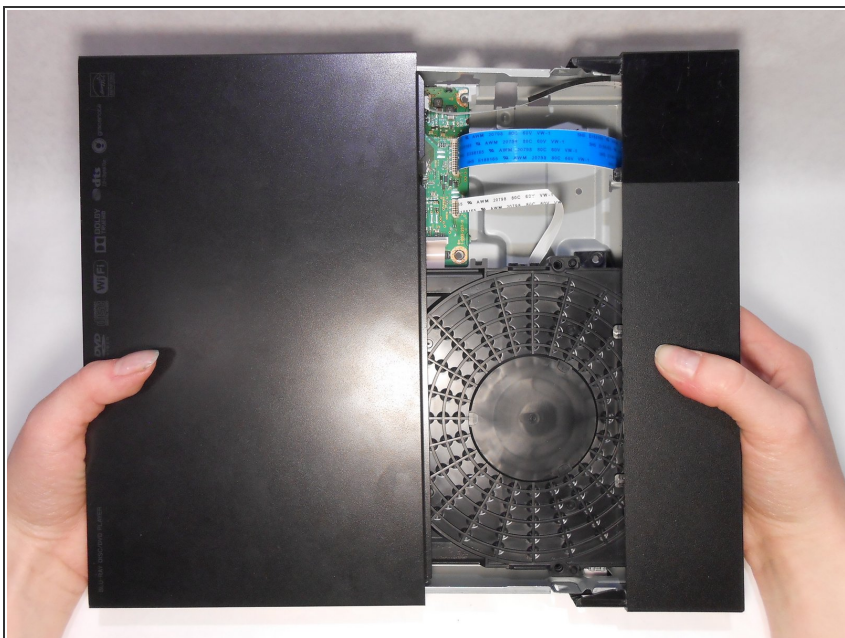
- Using an opening tool lift up the tabs located on the bottom of the plastic front cover.

Step 3



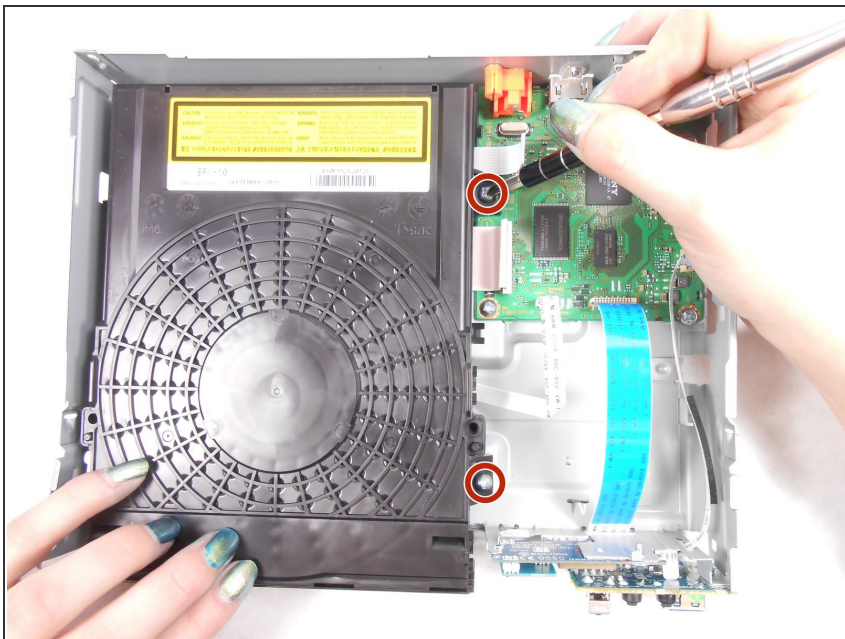
- Lift the tabs located on each side of the device to free the front cover. Begin to separate the front and metal back covers.

Step 4



- Completely separate the front cover and the metal back cover from the grey casing.
- The inner components should all be completely exposed after opening.

Step 5



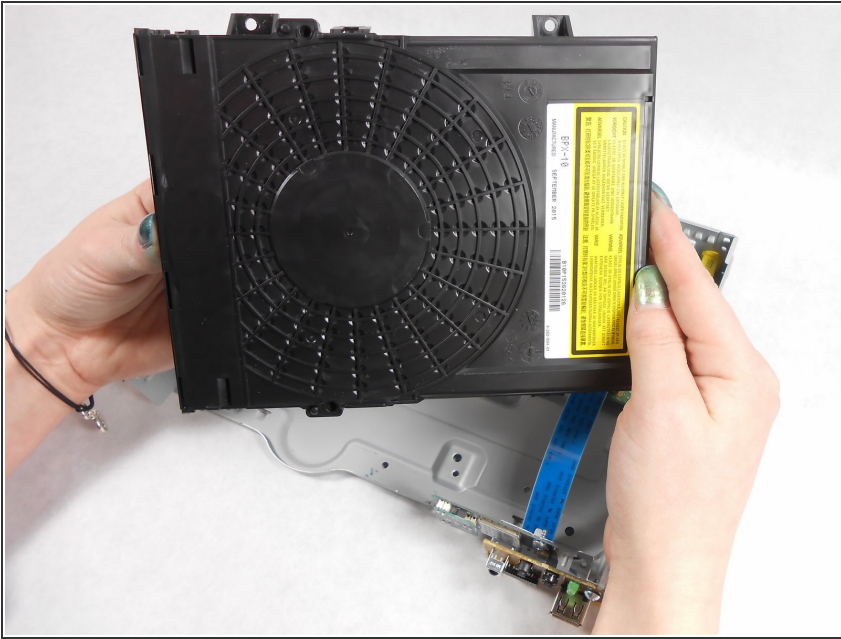
- Unscrew the two 8mm Philips head screws securing the disc assembly to the main casing.

Step 6



- Pull the disc assembly out from under the metal tabs on the main casing.

Step 7



- Remove disc assembly.

To reassemble your device, follow these instructions in reverse order.