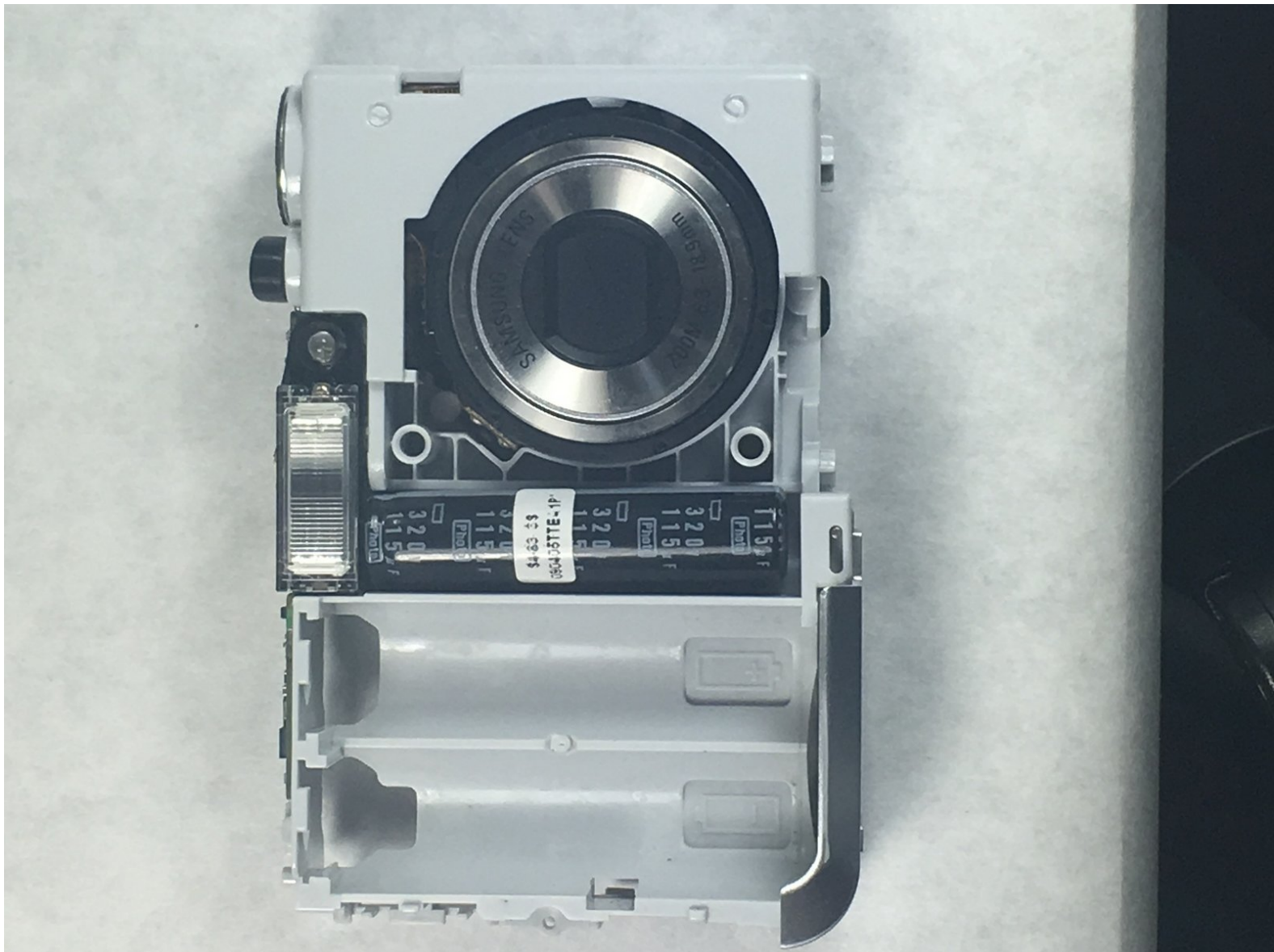




Samsung S760 Camera Lens Replacement Guide

This guide will help you be able to remove and replace your camera's lens

Written By: David Sepulveda



INTRODUCTION

This guide will take you through the steps of removing parts of your device to reach and replace the lens



TOOLS:

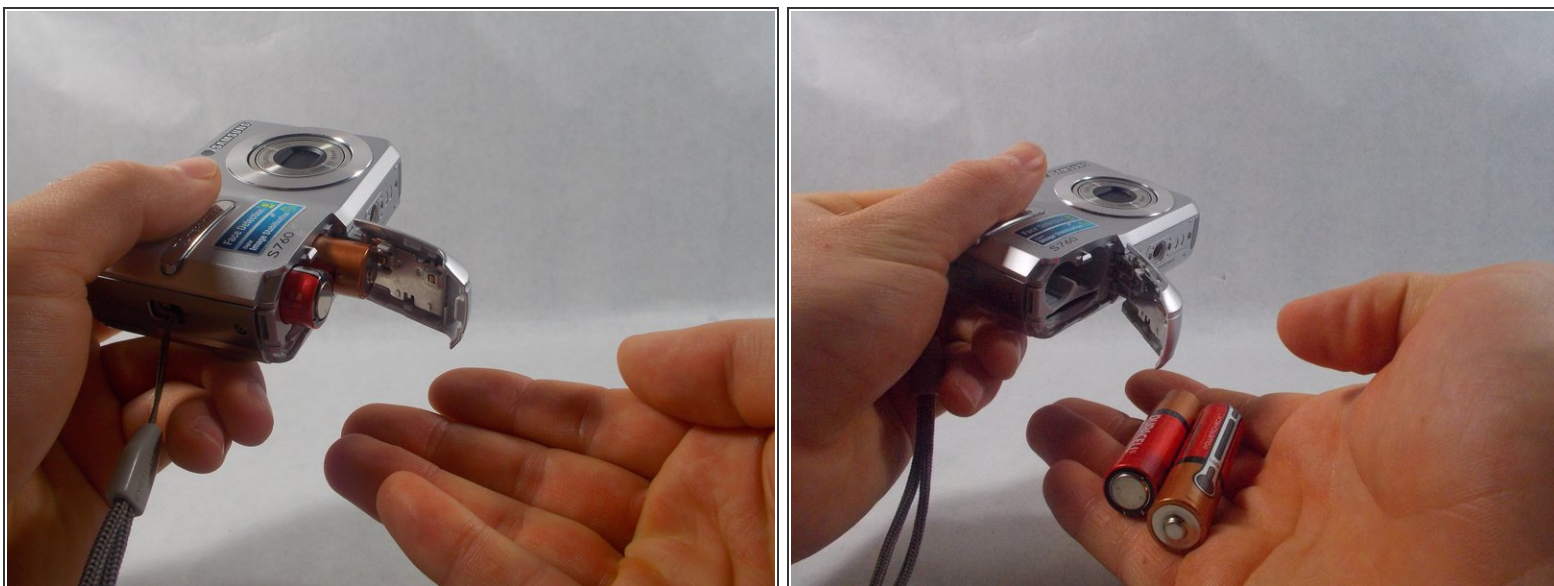
- [Phillips #000 Screwdriver](#) (1)
 - [iFixit Opening Tools](#) (1)
-

Step 1 — Battery



- Placing your thumb on the battery cover, push outwards, away from the camera in the direction the arrow is pointing. If done correctly when it's completely unhooked, the latch will open.

Step 2



- Tip the camera as to gently slide the batteries out of the camera.

Step 3 — Front and Back Case



i All screws in this camera are removed using the Phillip Screwdriver #000 bit. Also, all dimensions included refer to screw *lengths*.

- Locate and remove the six 4mm screws on the sides of the camera.

Step 4



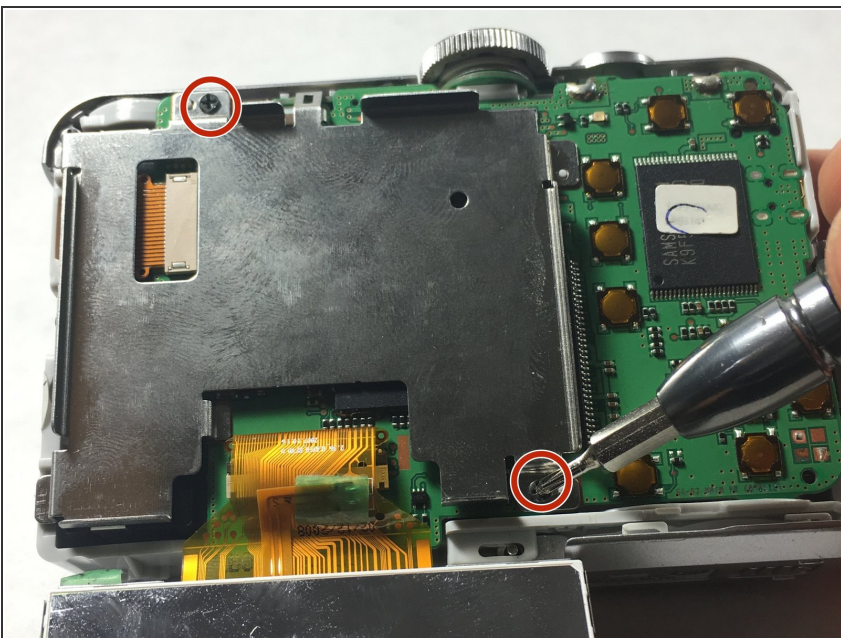
- Use the plastic opening tool to pry open the back case, following alongside the edge of the case if need be.

Step 5



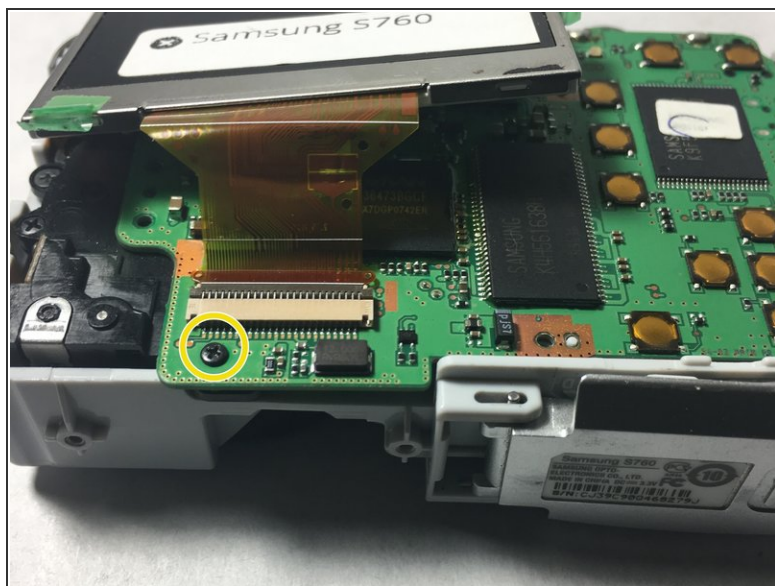
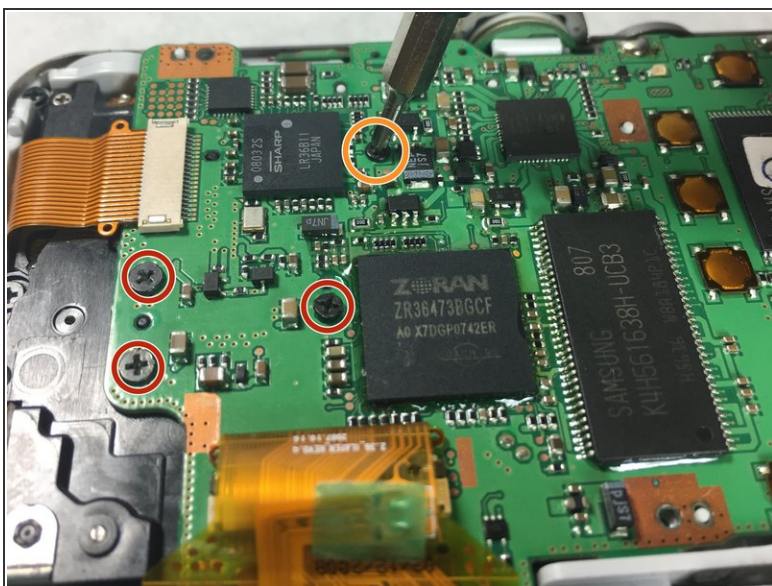
- Once the back case is removed, use the plastic opening tool to gently pry off the front case.

Step 6 — Camera Lens



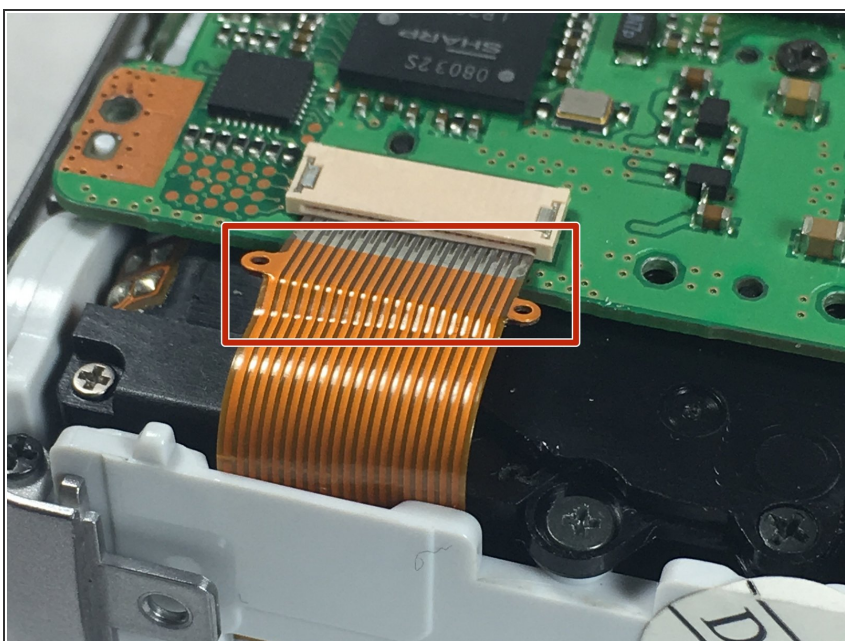
- Move the screen down, out of the way to remove the two 3mm screws beneath it.

Step 7



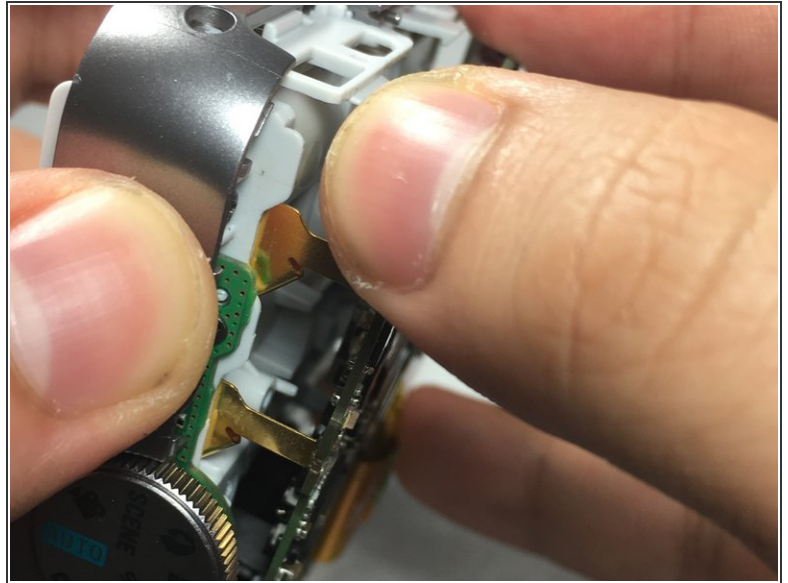
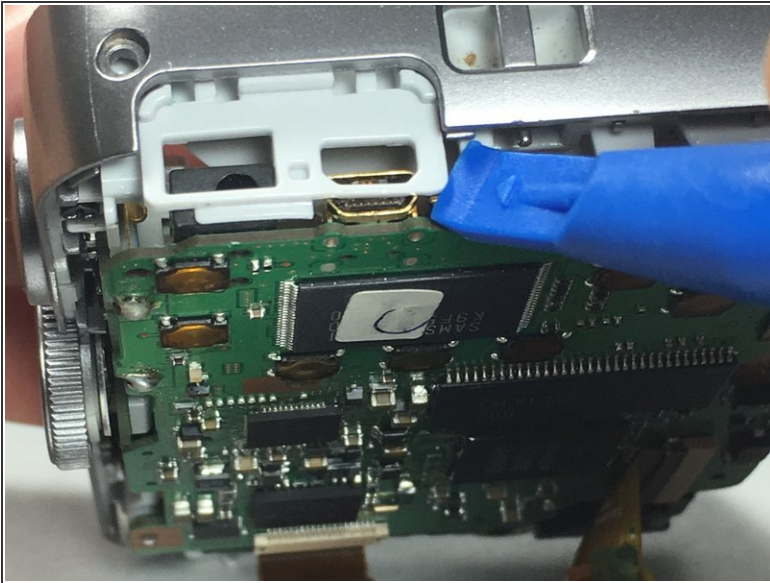
- Remove the 6mm screw labeled in the picture.
- Remove the three 3mm screws.
- Then proceed to flip the screen to the other side to remove the other 6mm screw.

Step 8



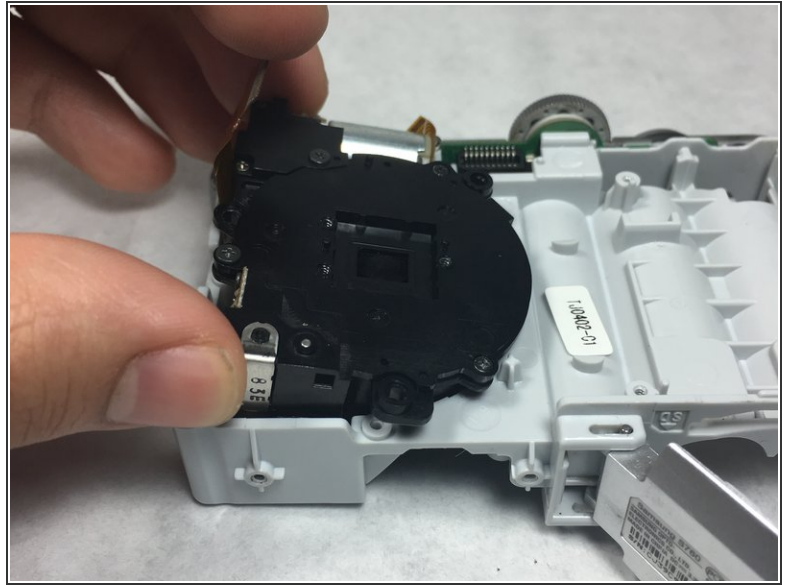
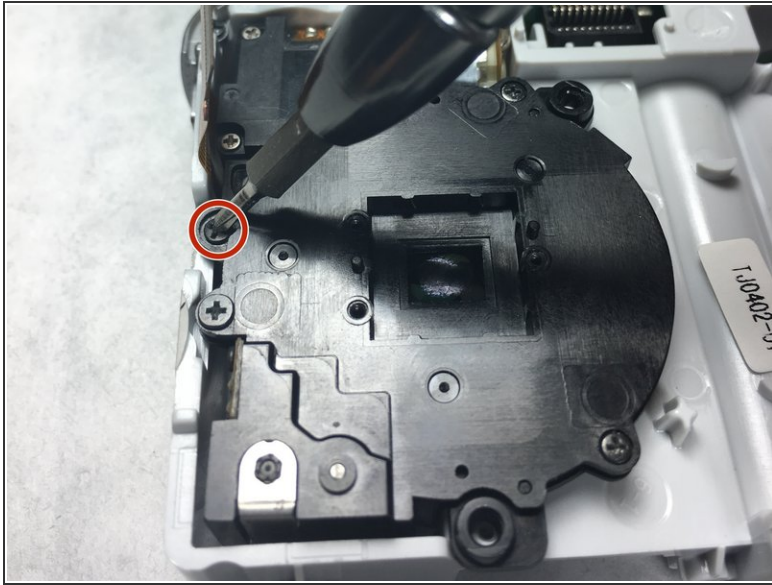
- Proceed to carefully pull the ribbon cable out by using the little circular tabs sticking out on either side.

Step 9



- Proceed to slowly pry off the mother board with the plastic opening tool by removing it at the micro USB attachment.
- Then carefully manually pry off the golden colored section near the camera wheel until all of it is off.

Step 10



- Finally, remove the final 3mm screw marked in the picture.
- Lift the camera lens out of the lens compartment.

To reassemble your device, follow these instructions in reverse order.