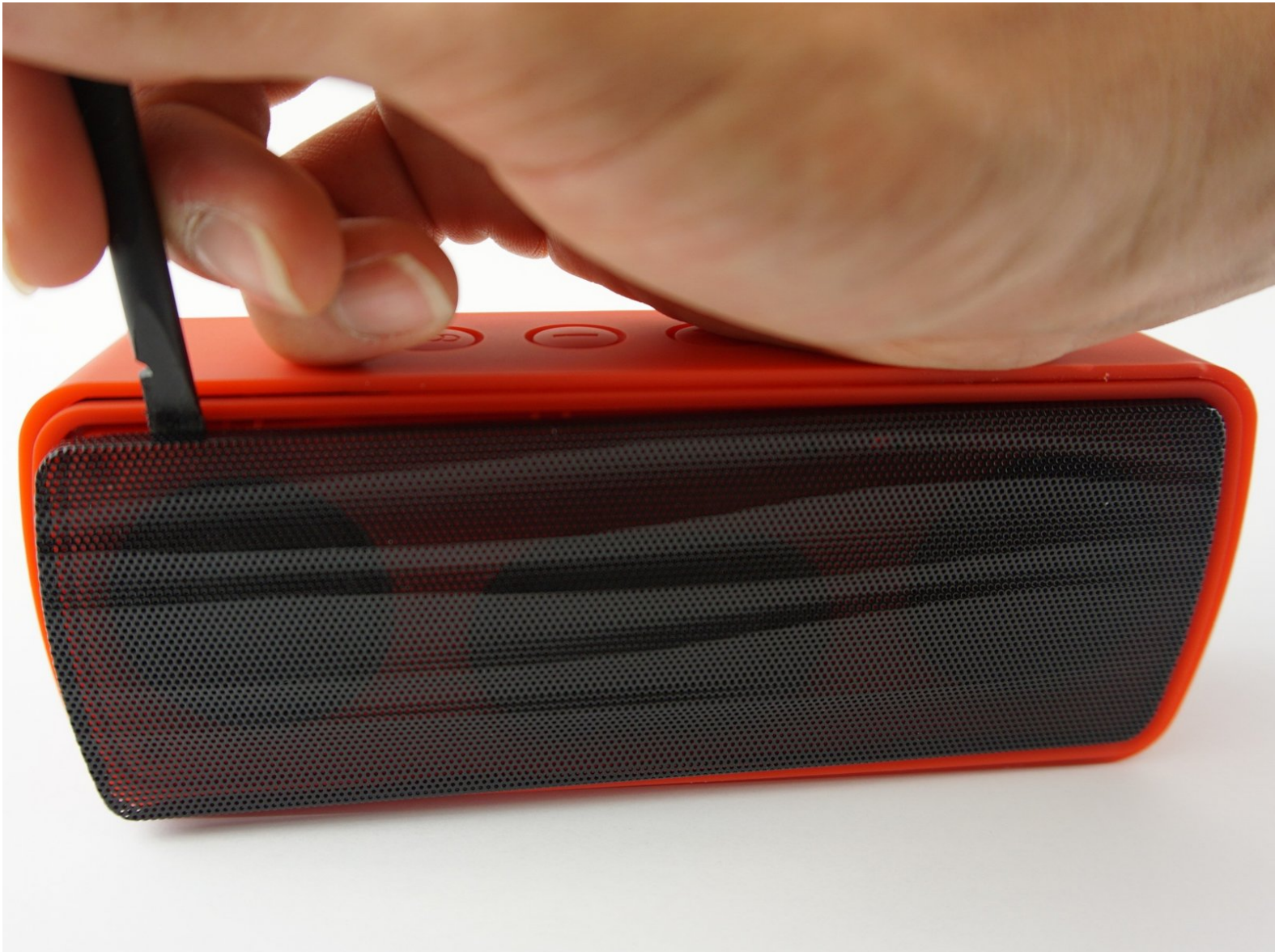




Insignia NS-CSPBTHOL-R Battery Replacement

Replace your dying battery to power up your Insignia NS-CSPBTHOL-R speaker.

Written By: Judith Villegas



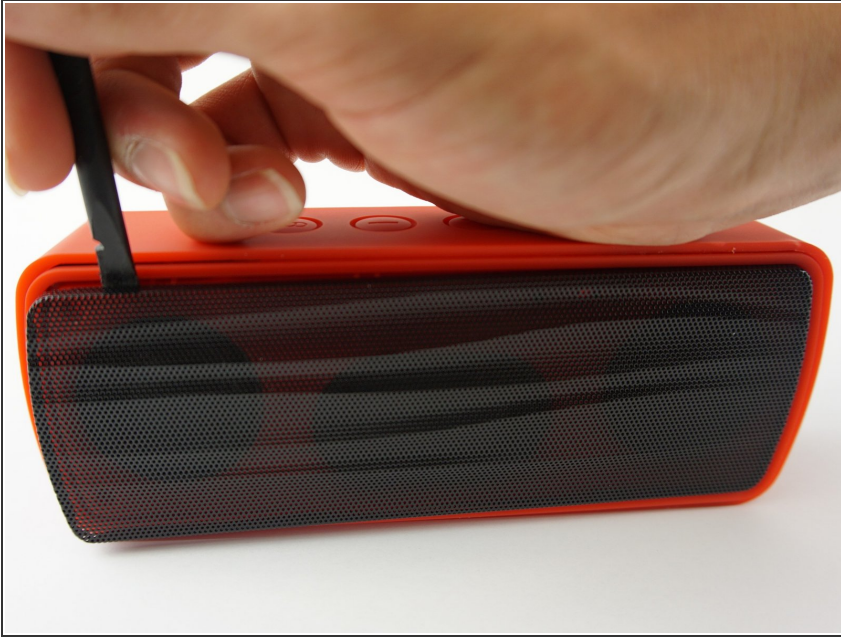
INTRODUCTION

Is your battery no longer holding a charge? Do you have to keep it plugged in to listen to music? This guide will replace the battery so you can enjoy the speaker for hours in between charges.

TOOLS:

- [Heavy-Duty Spudger](#) (1)
 - [JIS Driver Set](#) (1)
 - [Tweezers](#) (1)
-

Step 1 — Battery



- Push the Spudger into the crevice between the grated panel of the speaker and the base of the speaker.
- Angle the spudger to create a separation between the grate and the base.

Step 2



- Slide the spudger along the separation between the grate and the base of the speaker to loosen the grate. Do this to the entire perimeter of the speaker.

Step 3



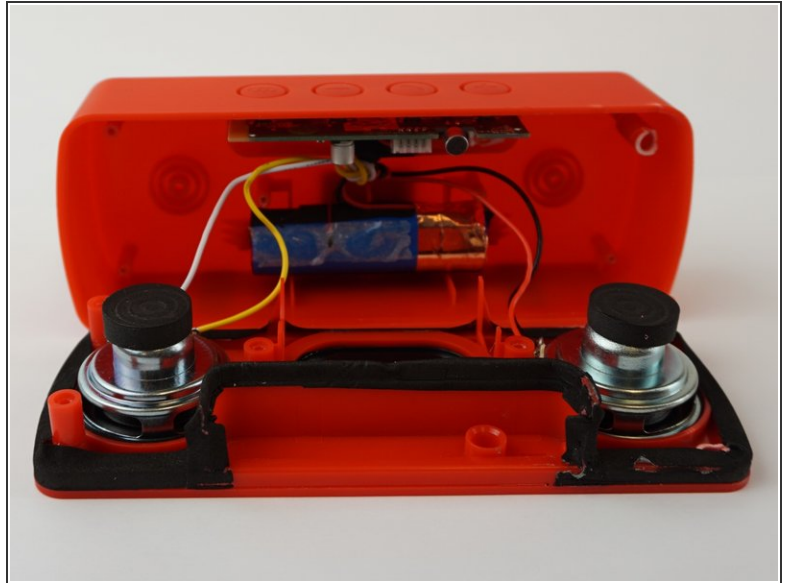
- Pull the grated panel off.

Step 4



- Remove the six 3mm screws using the J00 JIS screw bit. This will require a long, narrow screwdriver.

Step 5



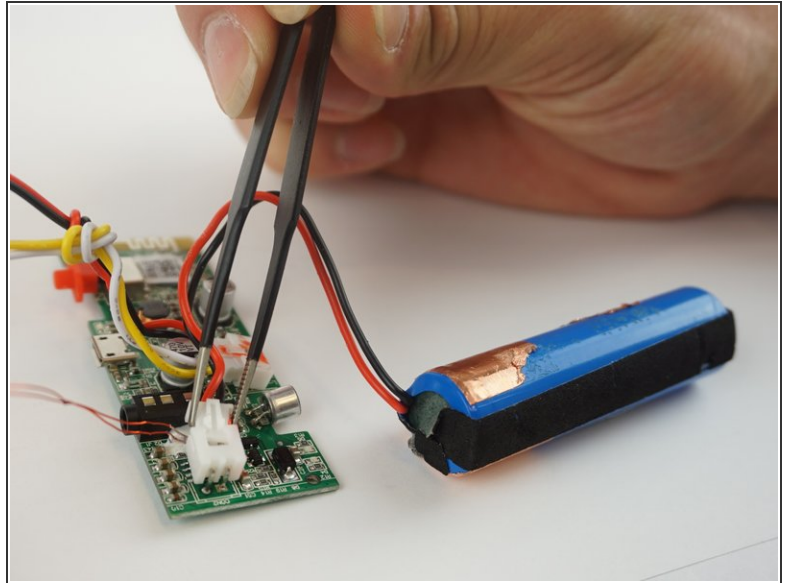
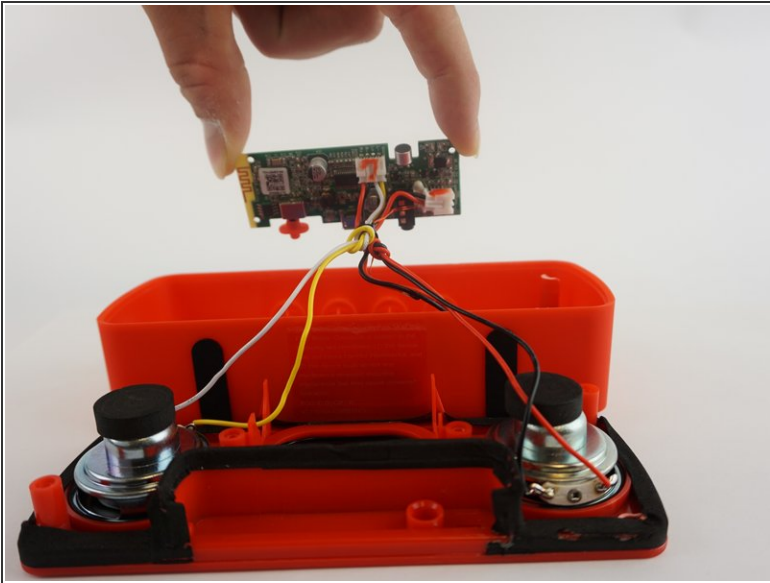
- Push the spudger into the crevice between the base and the face of the speaker and create a separation.
 - Slide the spudger along the entire perimeter and gently pull off the face of the speaker.
- ⚠ The two parts are connected by wires, do not rip them apart.

Step 6



- Use the spudger to release the battery by sliding it underneath the battery to create a separation.
- Remove the battery.

Step 7



- Pull the motherboard from the base of the speaker.
- Using tweezers, squeeze and pull on the white plastic clip that connects the battery wires to the motherboard.
- Unclip the battery from the motherboard.

To reassemble your device, follow these instructions in reverse order.