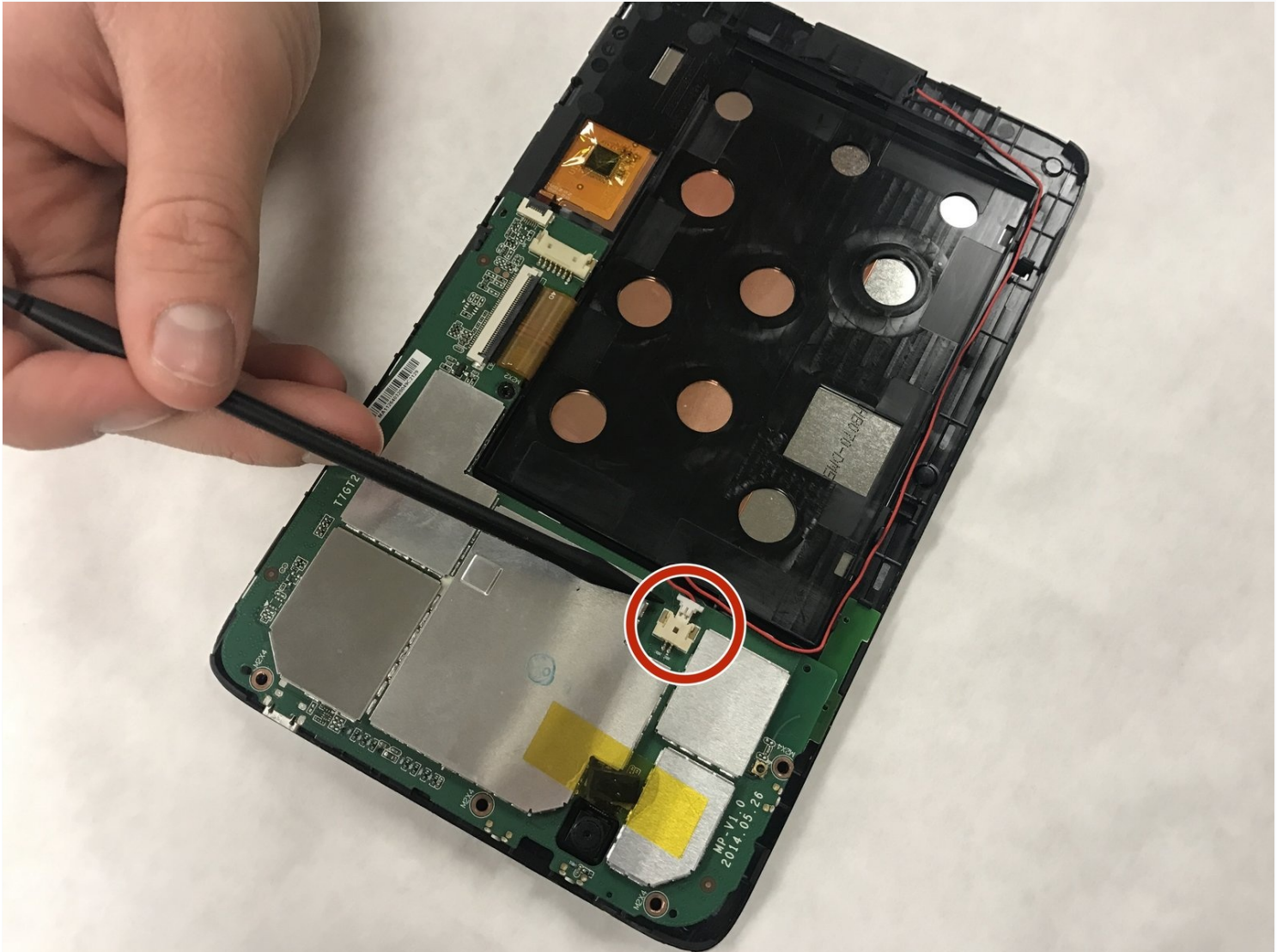




# Toshiba Encore Mini Speakers Replacement

The following guide shows detailed steps to...

Written By: Khaled Alsaghayer



## INTRODUCTION

The following guide shows detailed steps to remove the onboard speaker from a Toshiba Encore Mini. Be sure to back up data to an external device before attempting any component replacement.

---

### TOOLS:

[Metal Spudger](#) (1)


[Small Plastic Spudger](#) (1)

---

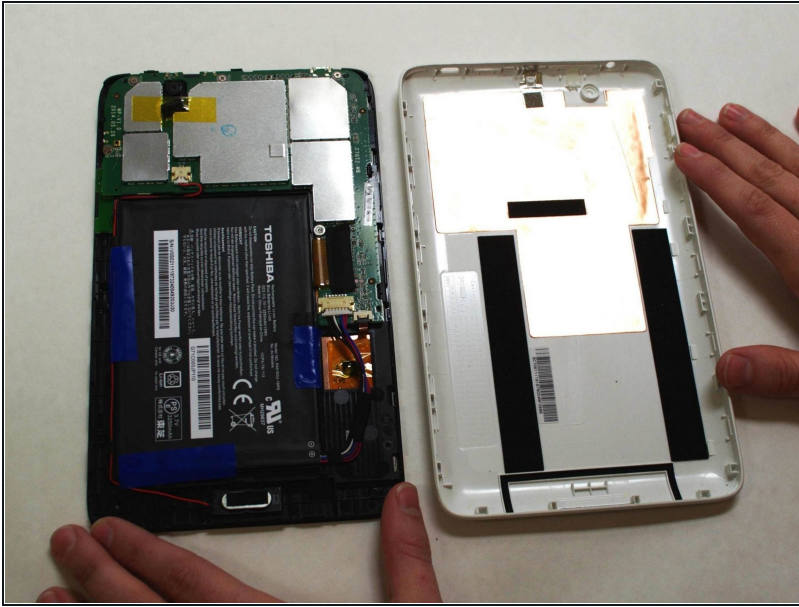
## Step 1 — Battery



 **To replace the battery, the rear cover must first be removed.**

- Using the flat end of the spudger, gently pry open the back case from the rest of the device.
-  It may be easier to start along one of the long edges and carefully work your way toward the corner, then along the short edge.

## Step 2



- Remove the rear cover and set it aside.

## Step 3



- Carefully remove the electrical tape that holds the battery in place.



## Step 4



- Using needle-nose [tweezers](#), gently push the large white wire connector (connected to the black, red and blue wires) out of its housing.

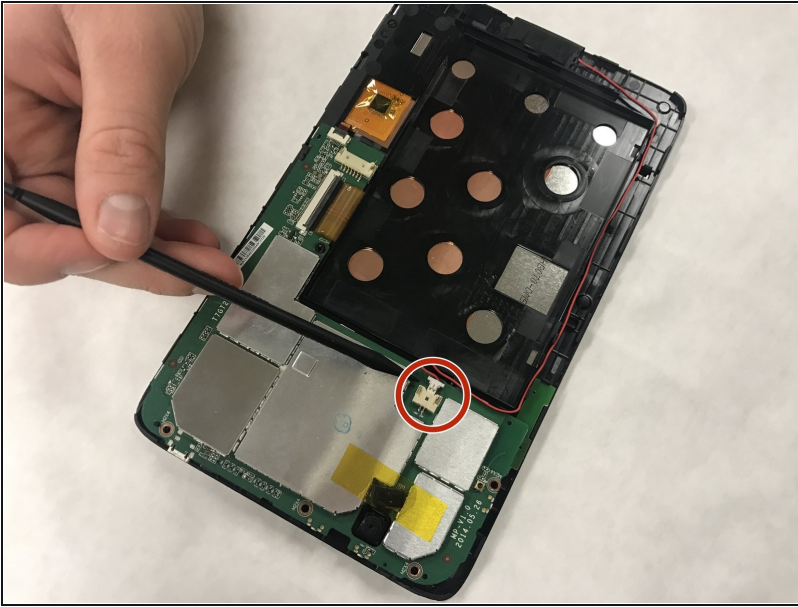
## Step 5



- Gently lift the battery out of the device.

⚠ Be careful not to pull on the connecting wires.

## Step 6 — Speakers



- Use the spudger to pull the speaker wire plug from its socket.

## Step 7



- Carefully use the metal spudger to remove the speaker from the frame of the phone.
- ⓘ The speaker is attached with some double-sided adhesive and may be difficult to remove.

To reassemble your device, follow these instructions in reverse order.