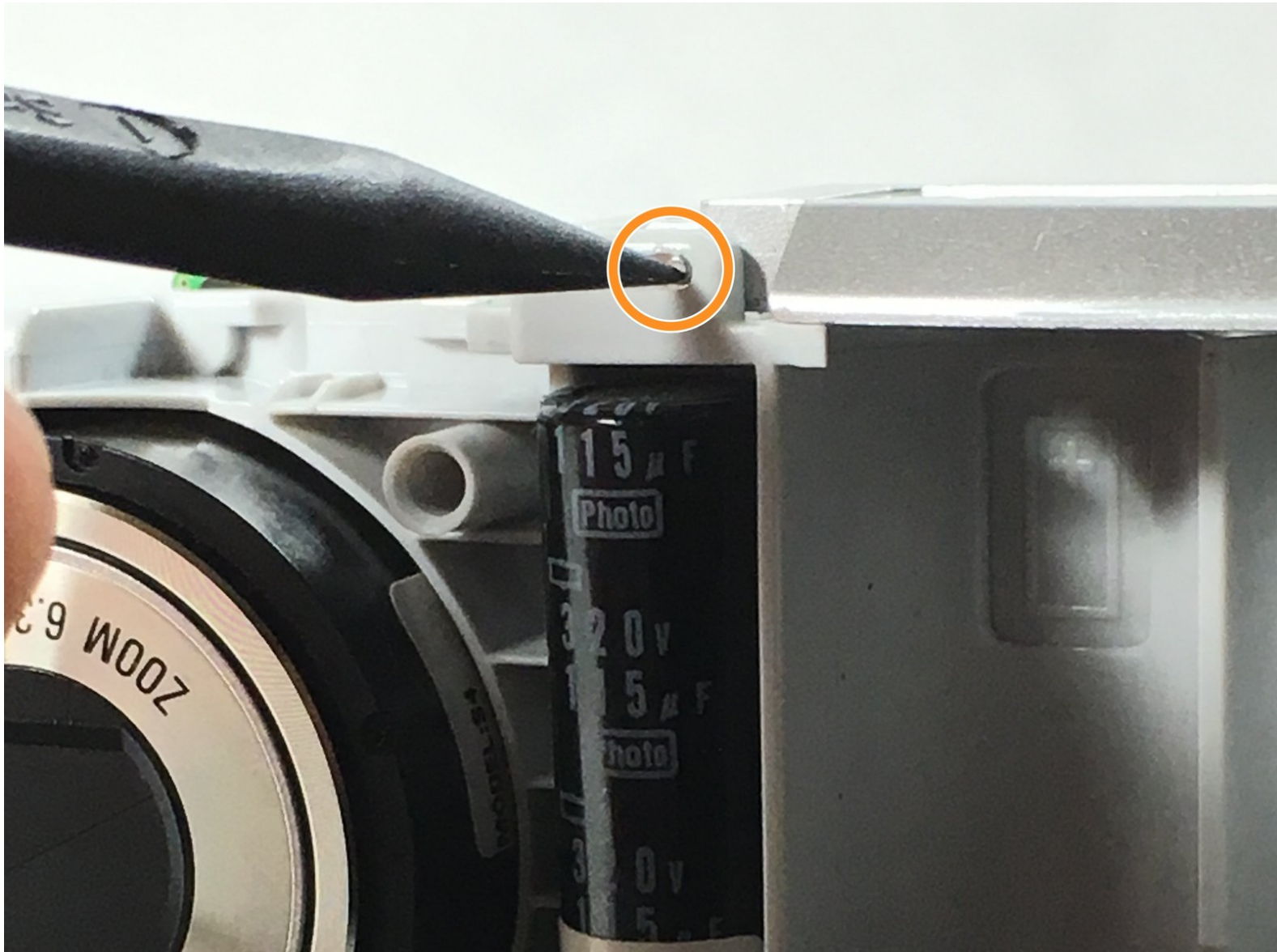




Samsung S760 Battery Cover Replacement Guide

This guide will show you how to replace a battery cover that has broken off.

Written By: Isaiah Weidmann



INTRODUCTION

The battery cover can break off fairly easily if you're not careful, as it is attached by only a single hinge. This guide will show you how to replace it.

TOOLS:

- [Phillips #000 Screwdriver](#) (1)
- [iFixit Opening Tools](#) (1)
- [Heavy-Duty Spudger](#) (1)

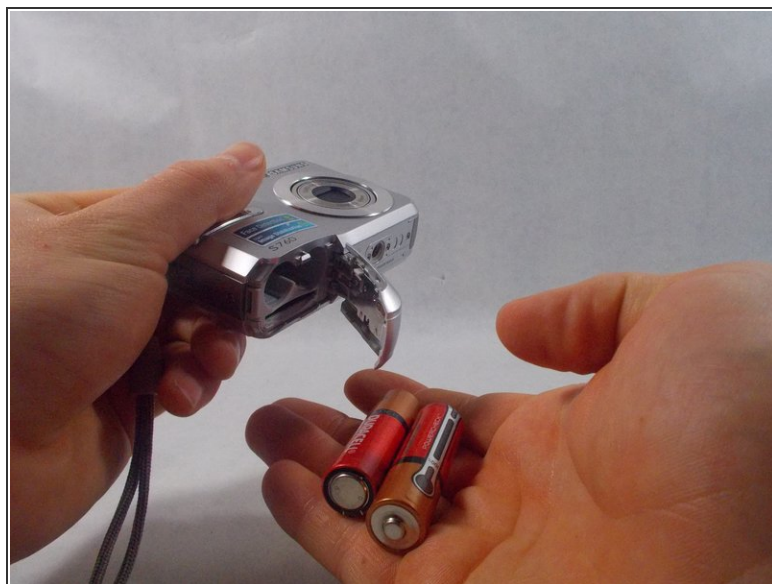
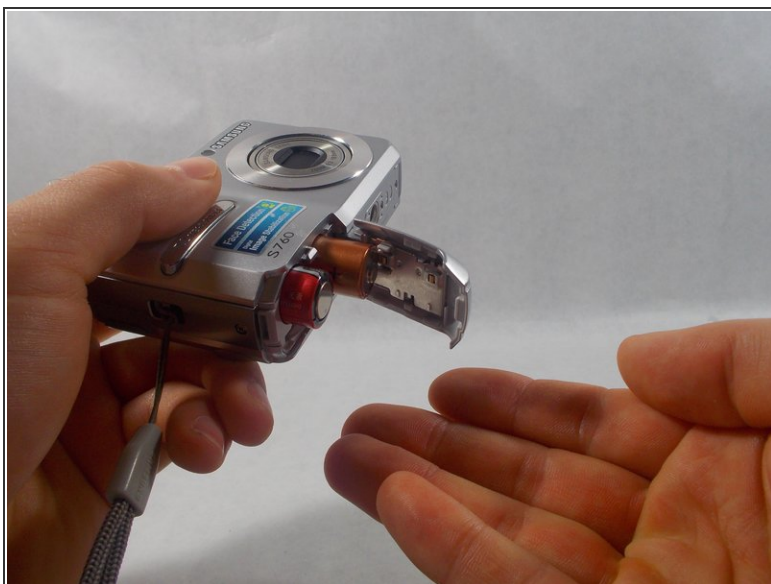
IF145-002-2

Step 1 — Battery



- Placing your thumb on the battery cover, push outwards, away from the camera in the direction the arrow is pointing. If done correctly when it's completely unhooked, the latch will open.

Step 2



- Tip the camera as to gently slide the batteries out of the camera.

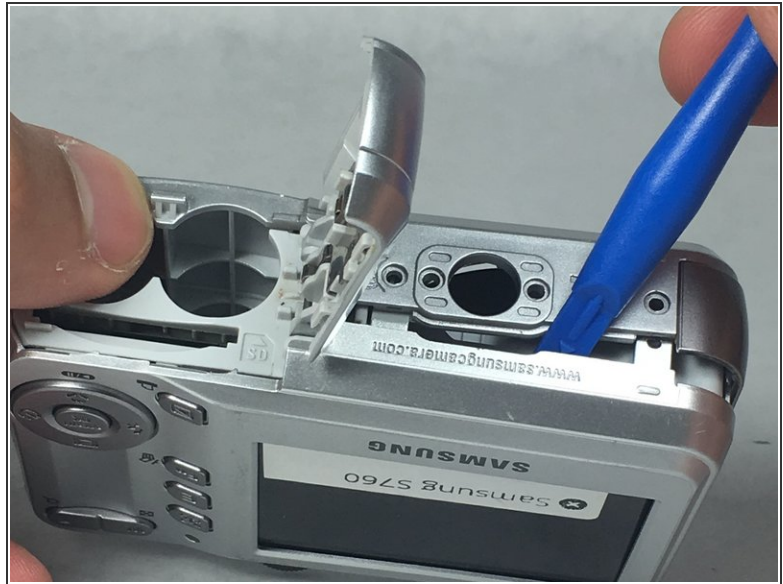
Step 3 — Front and Back Case



i All screws in this camera are removed using the Phillip Screwdriver #000 bit. Also, all dimensions included refer to screw *lengths*.

- Locate and remove the six 4mm screws on the sides of the camera.

Step 4



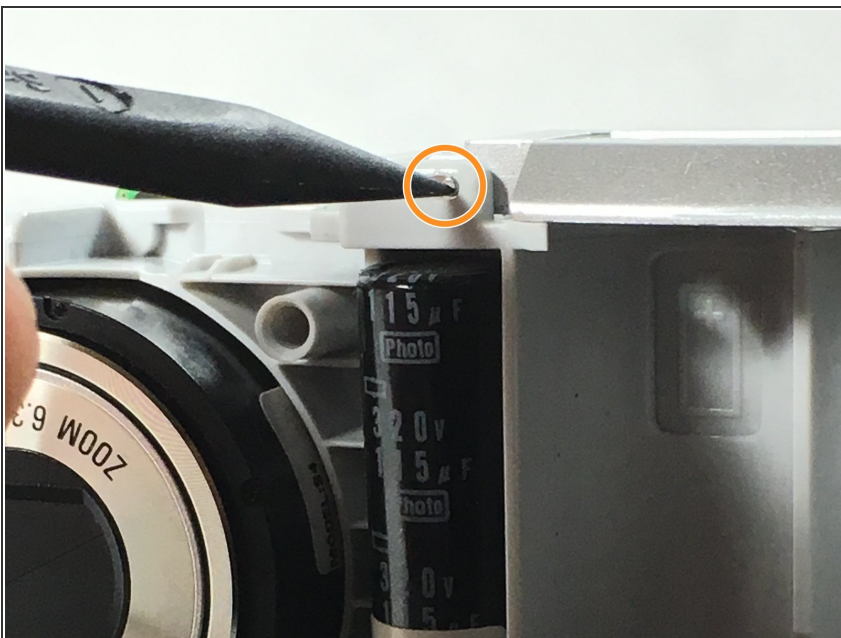
- Use the plastic opening tool to pry open the back case, following alongside the edge of the case if need be.

Step 5



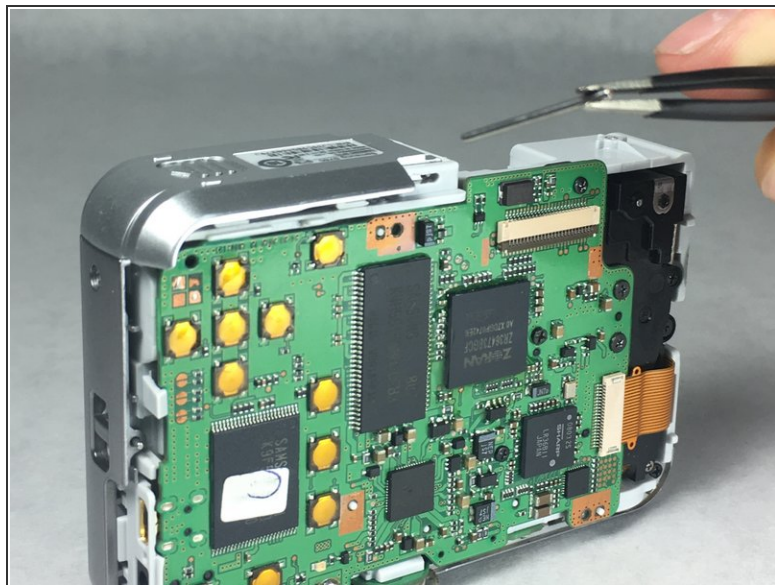
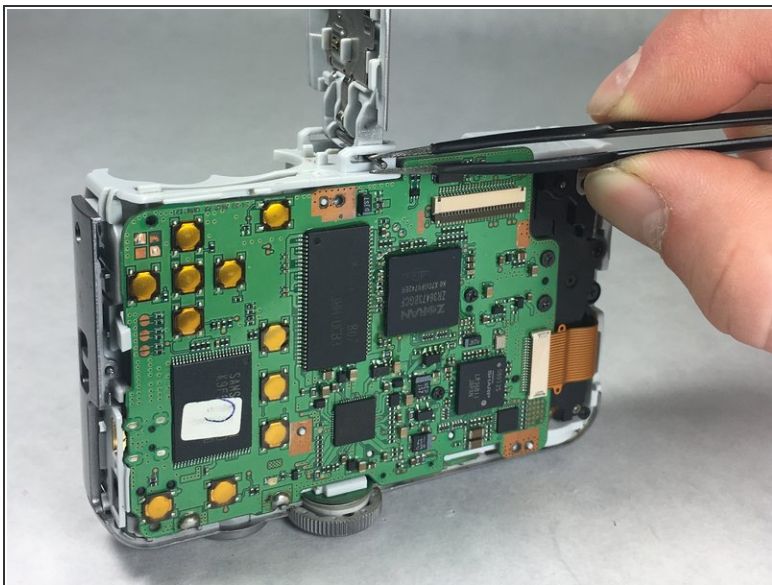
- Once the back case is removed, use the plastic opening tool to gently pry off the front case.

Step 6 — Battery Cover



- Using the pointed end of the Spudger, push the metal pin out of the hinge as far as it will go (this will typically be halfway).
- ⓘ It can be hard to get the Spudger point to center on the pin, so try choking up on the Spudger.

Step 7



- Using the tweezers, grasp and pull the portion of the pin that is sticking out of the hinge.

Step 8



- Pull the battery cover in the same direction you pushed to open it. The cover should come right off.

To reassemble your device, follow these instructions in reverse order.