



Chromebook Pixel (2013) Battery Replacement

Swap out your old battery for a new one.

Written By: Kevin Fessler



INTRODUCTION

If your battery is starting to go out here is a guide which will show you how to throw in a new one.



TOOLS:

- [2.5 mm Flathead Screwdriver](#) (1)
- [Flathead 3/32" or 2.5 mm Screwdriver](#) (1)



PARTS:

- [Chromebook Pixel \(2013\) Battery - 59.2 Wh](#) (1)

GP-S22-000000-0100

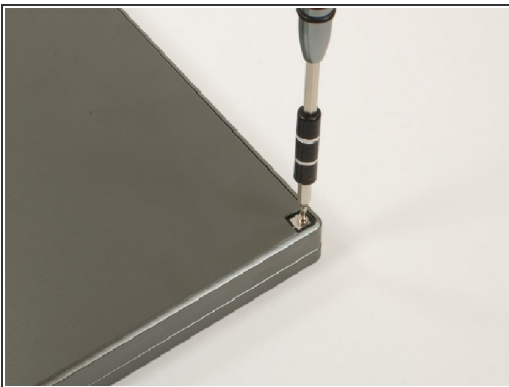
These batteries can be hard to find.

Step 1 — Remove the rubber pads



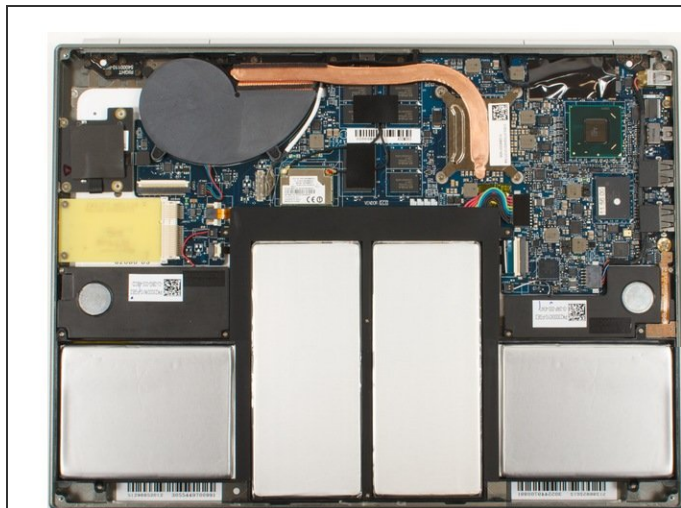
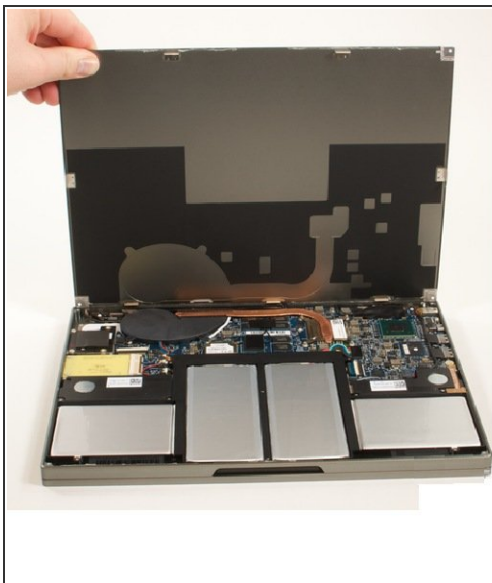
- Flip your Chromebook Pixel over onto its back
- Using a flat edge screwdriver, gently pull up to remove the rubber pads from the laptop to reveal the screws

Step 2 — Removing the bottom panel



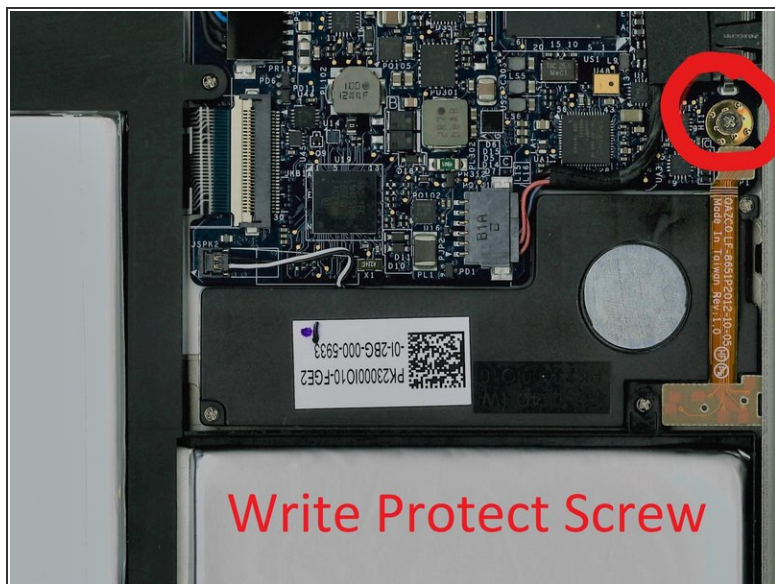
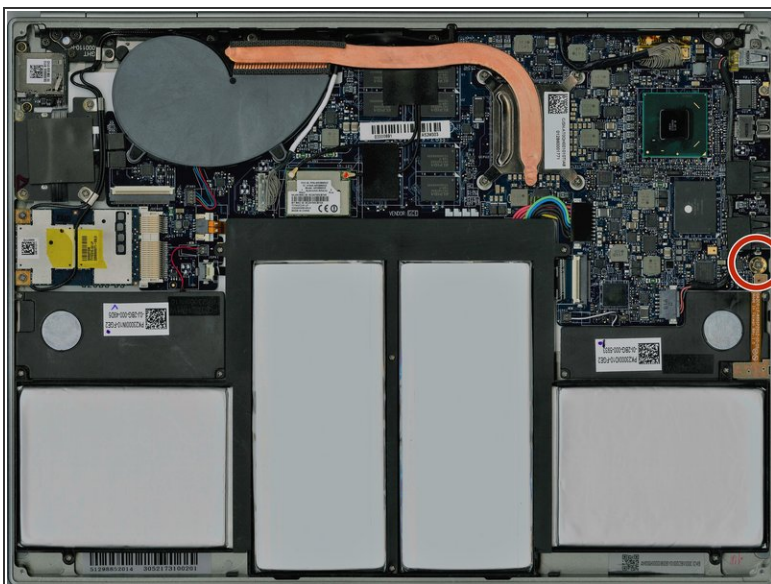
- Using a small Philips screwdriver, remove the four screws under the pads
- Using a spudger (or another flat but slightly blunt object), gently pry the laptop open
 - You may find it helpful to start with a smaller (skinnier) head and work your way up to a larger size

Step 3 — Pop it open



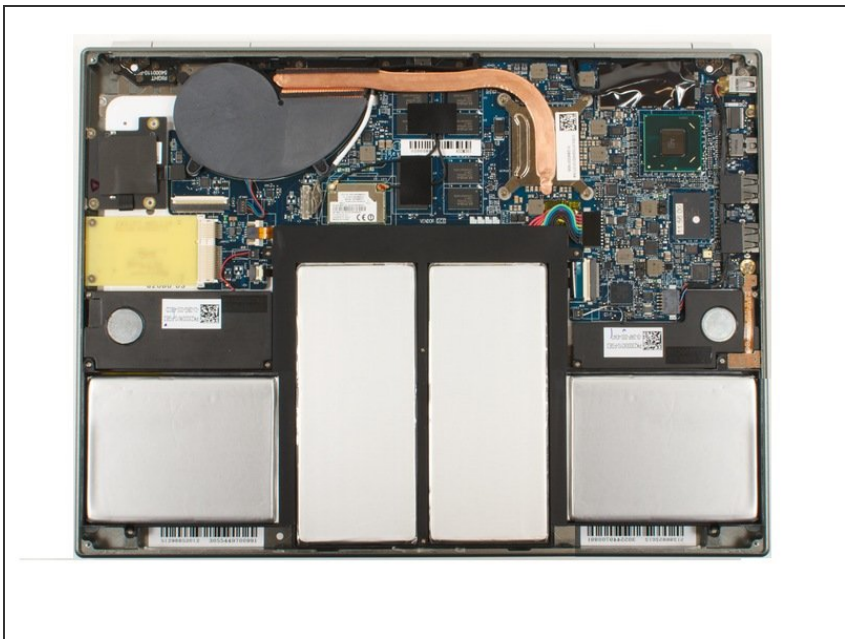
- Gently pull up from the front of the laptop and open it up like a clamshell

Step 4 — Remove the write protect screw (IF APPLICABLE)



- Locate the write protect screw
- Remove it and you can begin flashing your BIOS!

Step 5 — Remove the bottom cover



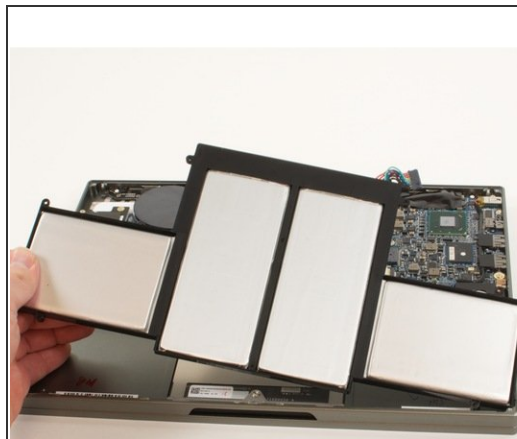
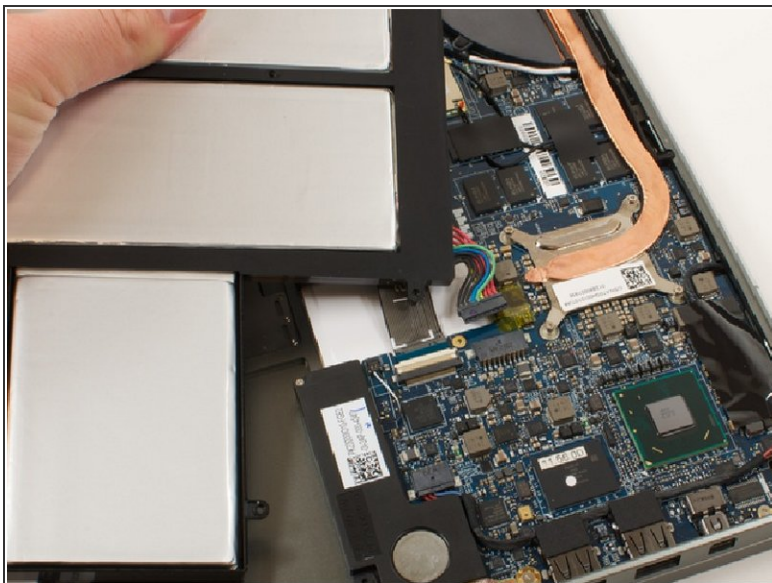
- You should have your Chromebook Pixel flipped over and the bottom cover removed at this point

Step 6 — Release the battery



- Remove the screws holding the battery in place.

Step 7 — Unplug the battery



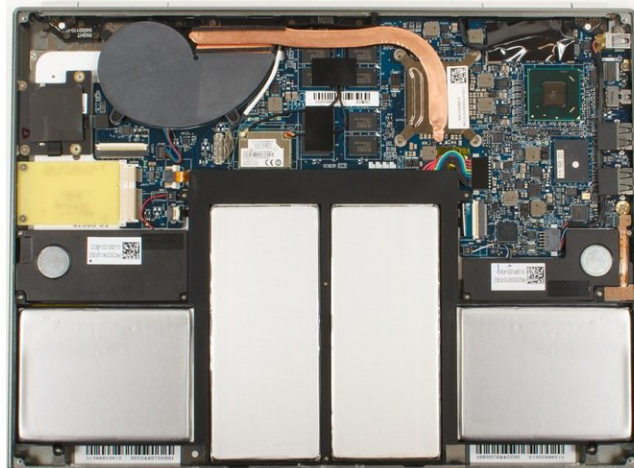
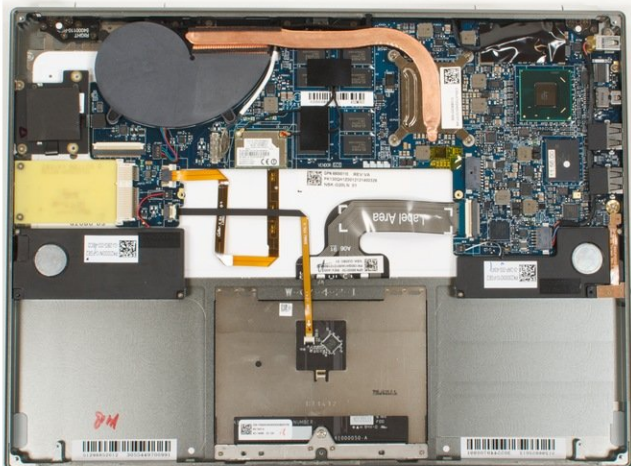
- Using a splunger or your finger and a gentle pull, unplug the battery from the Pixel logic board
- Pull the battery toward you to remove it

Step 8 — Examine the new battery



- Make sure that the wattage and voltage matches the values of the old battery

Step 9 — Install the new battery



- Follow these steps in reverse and turn on the Pixel.
- If the old battery was failing, will have to reset the system time when you log back into Chrome OS or your installed Operating System

To reassemble your device, follow these instructions in reverse order.